

Item #31172

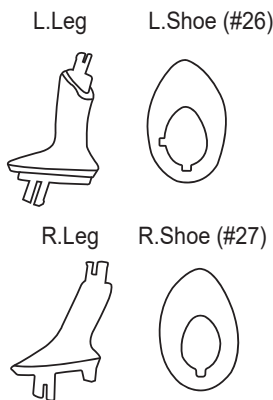
INSTRUCTIONS

1. Please count and make sure all pieces are present before assembly.
2. The pole pieces are delicate. To prevent damage, do not use excessive force.
3. Assemble crystal puzzle by putting the puzzle pieces together in the order shown below.
4. Piece numbers are not necessarily in the order of assembly. Some pieces do not have numbers.
5. Missing a piece? Email info@ugames.com or call (415) 503-1600 with missing piece number.

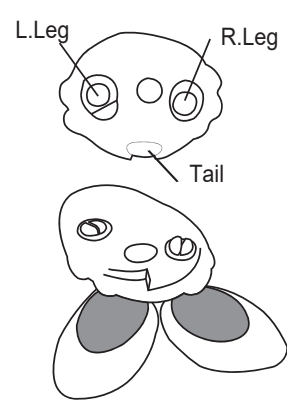
Step	Piece No.		Step	Piece No.		
1	R. Leg	27	23	23		
2	Leg	8	24	24		
3	L. Leg	26	25	21		
4	Leg	9	26	17		
5	20		27	22		
6	Tail		28	10		
7	18		29	16		
8	14		30	Pole		
9	25		Attach ears to ribbon			
10	13		31	Ribbon		
11	19		32	R.Ear	3	
12	5		33	L.Ear	4	
13	Skirt		34	Head		
14	1		Attach ribbon to head			
15	L. Arm	6	35	Sticker		
16	Arm	L.hand				
17	2					
18	R. Arm	7				
19	Arm	R.hand				
20	12					
21	15					
22	11					

HINTS

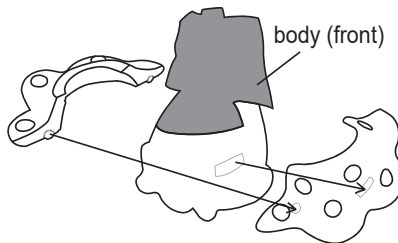
Step 1-4
Attach legs into shoes.



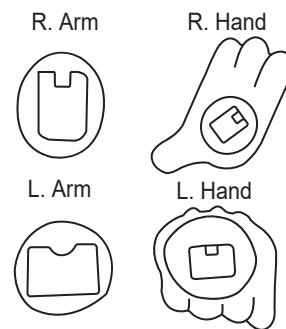
Step 5
Attach legs into piece #20.



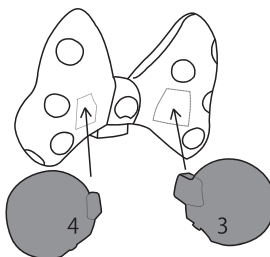
Step 13
Attach the skirt onto body by inserting the protrusions on skirts to holes on body.



Step 15-16, 18-19
Attach hands to arms.



Step 31-33
Insert the ears into the assembled ribbon.



Step 34
Insert the head piece on assembled face, then insert the ears and ribbons into head piece.

