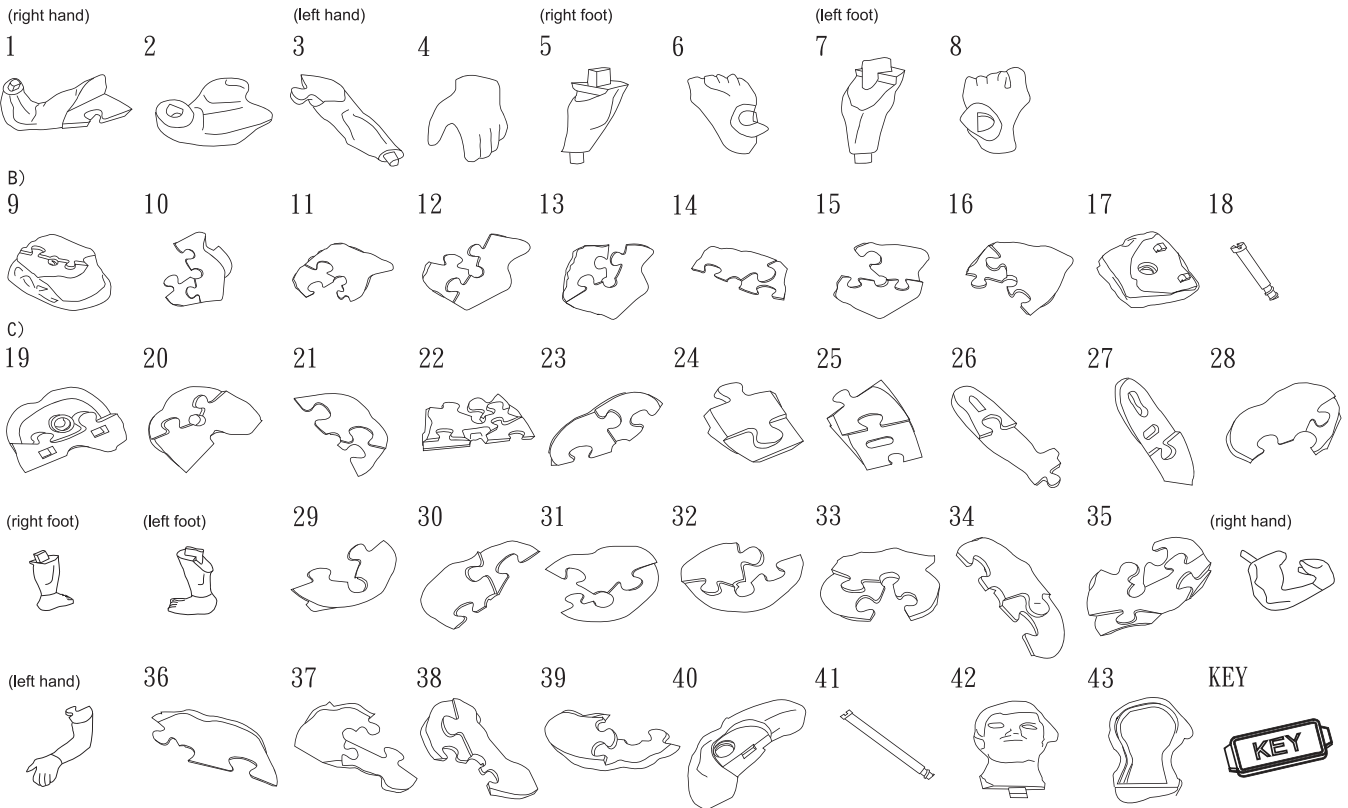


INSTRUCTIONS

1. Please count and make sure all pieces are present before assembly.
2. The pole pieces are delicate. To prevent damage, do not use excessive force.
3. Assemble crystal puzzle by putting the puzzle pieces together in the order shown below.
4. Missing a piece? Email info@ugames.com or call (415) 503-1600 with missing piece number.



HINTS

1

Do not lose any of the puzzle pieces.

2

To avoid difficulty while assembling the body, it is better to assemble the hands, feet and base first.

3

After assembled #40, insert the center pole #41 from top and screw it tightly with the key included.

4

Insert the body into the base and slide to right to lock it.

