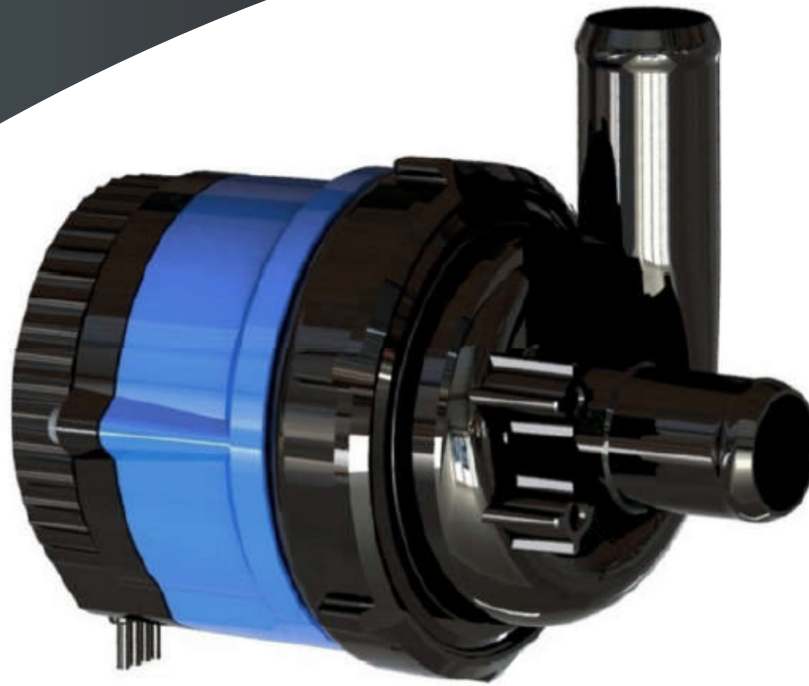




WORLDWIDE HEATING SYSTEMS

RIXEN'S
ENTERPRISES, INC.

COMPLETE COMFORT CONTROL



Rixen's BW0 355 PWM 2-speed 12VDC Water Pump

MANUAL



WORLDWIDE HEATING SYSTEMS

RIXEN'S
ENTERPRISES, INC.

COMPLETE COMFORT CONTROL

RIXEN'S ENTERPRISES, INC.

37600 C RUBEN LN.

SANDY, OR 97055

PHONE: (503) 668-6090

NEW UPFITTER INQUIRIES: (503) 668-6090 EXT: 007

contact@rixens.com

www.rixens.com

Rixen's BW0 355 PWM 2-speed 12VDC Water Pump

Overall Function

The pump is a wet rotor circulator, built according to the spherical motor principle. It is powered by an electronically commutated permanent magnet drive (EC-motor), operated by 12VDC.

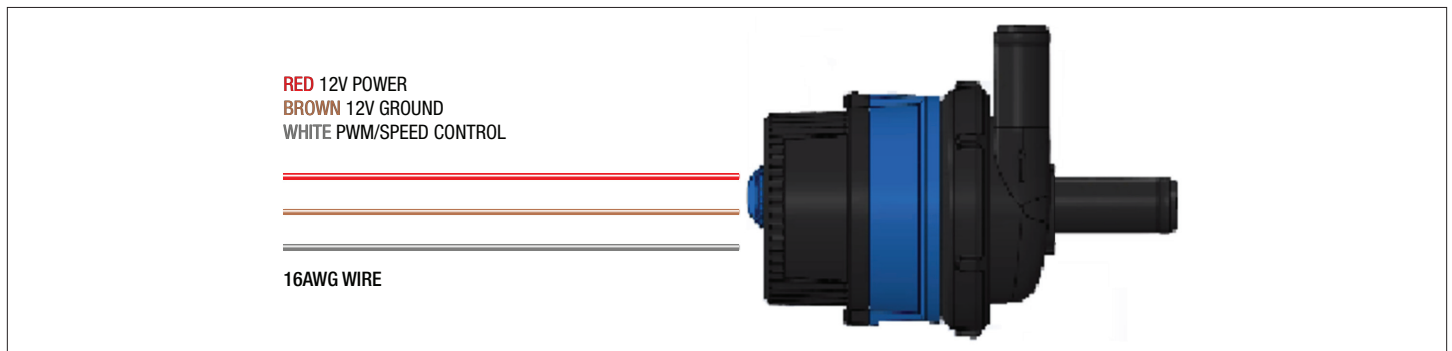
Performance

If the system being worked on does not have an individual white PWM wire connection, then follow below (note; the MCS7 circuit board will control the pump speed).

Two speeds can be selected by attaching the white PWM signal wire either to the positive or to the negative pole of the power source:

Speed 1 (3.400 rpm): Attach the white PWM wire to the positive pole red wire.

Speed 2 (4.400 rpm): Attach the white PWM wire to the negative pole brown wire.

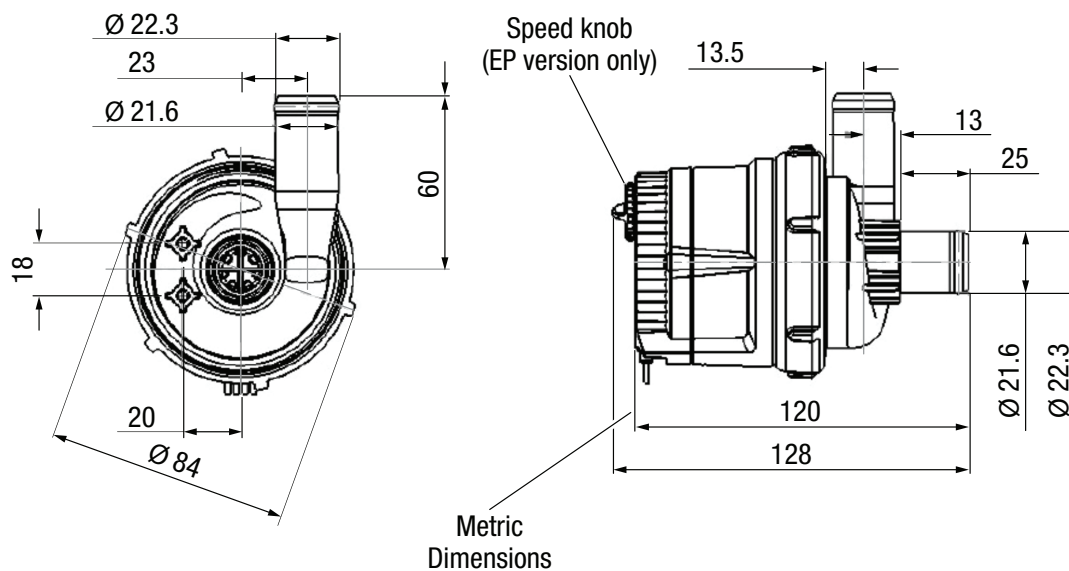
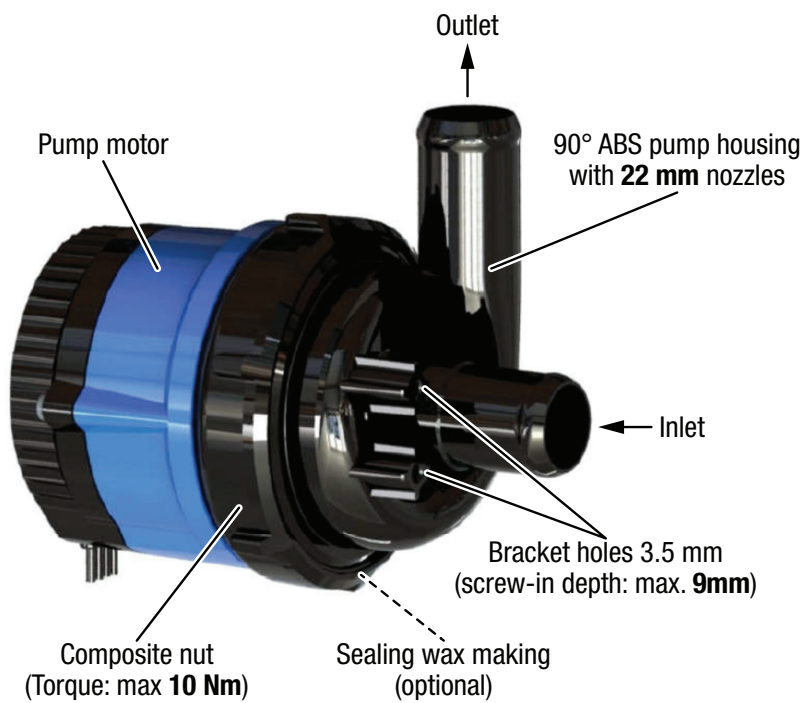


Technical Data

The following technical data apply to the pump:

Liquid: glycol/water (max. 50%/50%)
Max. delivery head H: 2.9 mWS / 10.2 ft.
Max. delivery flow Q: 17.5 l/min / 4.6 gpm
Max. Power consumption: 28 W
Compressive strength: PN6 (6 bar / 87.0 psi)
Speed range: 3.400 or 4.400 rpm
Safety class: IP 56
Pump housing: Noryl
Seal pump housing: EPDM 70
Motor housing: Ultramid
Motor nut: Noryl
Rotor can: Stainless Steel 1.4404

Dimensions



Pump Protection

INFO! The pump features dry run protection is deactivated!

The pump will not stop running even if used in plain air. However, the pipe system should be bled completely in order to prevent pump damages.

INFO! The pump is equipped with blocking protection.

If commutation gets lost (e.g. due to blocking of rotor) the pump switches off automatically, starts again, eventually switches off again and so forth.

INFO! Speed limitation at low temperatures: At a medium temperature $<0^{\circ}\text{C}$ (cold system) the pump runs at a limited speed of 2.300 rpm in order to maintain circulation. If the medium temperature rises to over 0°C the pump works in the usual way according to the speed set.

INFO! The pump is equipped with overheating protection.

If 125°C is exceeded in the motor, the pump will switch completely off. It switches on again when the temperature falls below 105°C .

INFO! For safe starting, the pump will first run at 1.900 rpm for 10 seconds. After that it will run according to the speed set.

Operational Conditions

On site ambient temperature: $-20^{\circ}\text{C} \dots +50^{\circ}\text{C}$

Temperature of medium: $-20^{\circ}\text{C} \dots +90^{\circ}\text{C}^*$

*Above 85°C the motor will reduce its speed so that overheating is avoided, whereas heat flow through circulation is still given. If the temperature reaches the standard range again, the pump will operate in the original way according to the speed set.



WORLDWIDE HEATING SYSTEMS

RIXEN'S
ENTERPRISES, INC.

COMPLETE COMFORT CONTROL

RIXEN'S ENTERPRISES, INC.

37600 C RUBEN LN.

SANDY, OR 97055



PHONE: (503) 668-6090



AFTER HOURS TECH SUPPORT PHONE LINE AVAILABLE BY CALL



OR TEXT: (503) 744-2408



SALES PHONE: (647) -569-6606



contact@rixens.com



www.rixens.com