

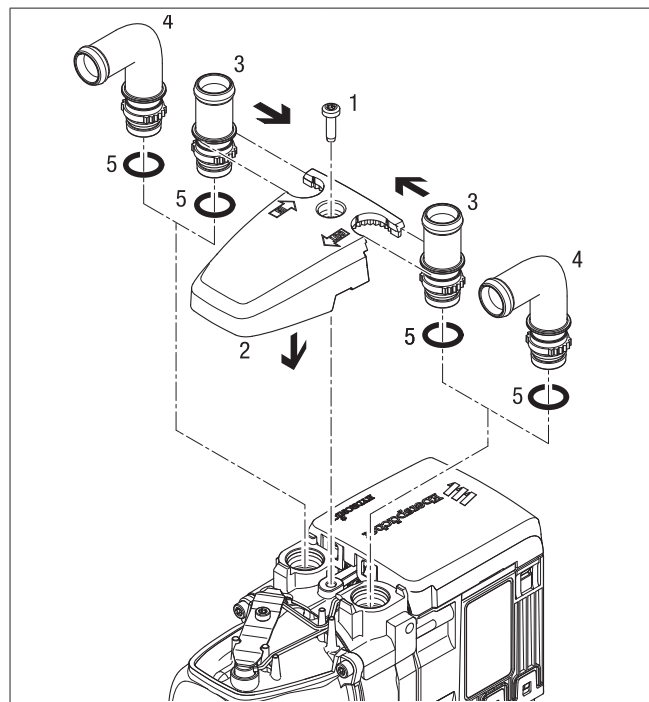
## Eberspächer S3 CS

### 1. Furnace assembly

You receive the S3 with straight barbs pre-assembled.

Angled barbs are available upon request.

Also pre-installed is a fuel line adapter for 1/8" fuel hose.



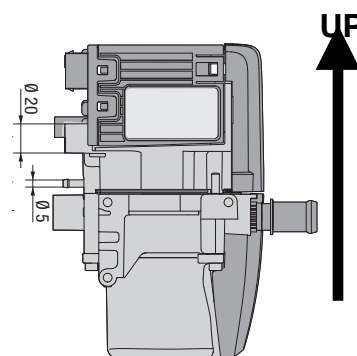
### 2. Furnace mounting orientation

Where many orientations are allowed, we strongly recommend to mount the furnaces vertically.

**Note:** One bolt holds the furnace to its mounting bracket. The holes in the furnace are not threaded. The bolt will cut the threads.

**There is no need for special tools.**

We recommend to pre-fit the bracket to the furnace on the bench. Install the bolt, thereby cutting the threads. Use that assembly to mark your holes for the bracket at the mounting location. Separate the bracket from the furnace and install.



### 3. Fuel Pump

Take note of the required upward angle and permissible distance:

Make use of the WIFI

Diagnostic tool's

**"Fuel Pump Prime" function:**

When the fuel line is installed, leave the hose off the furnace and put it into a container (empty water bottle, etc.)

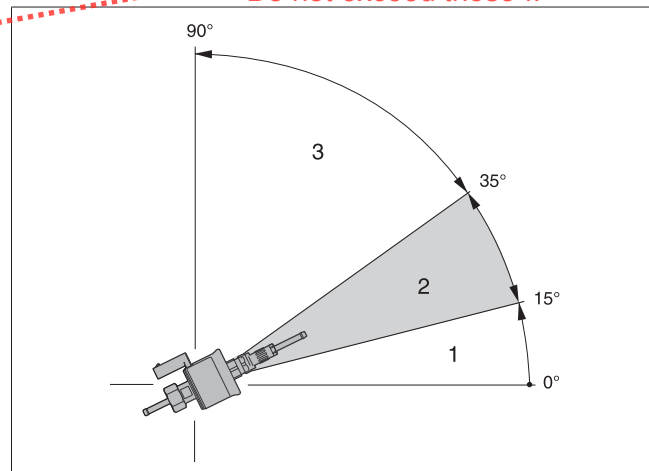
Then use the prime function until fuel comes out of the hose. Then install the primed hose on the furnace.

**Permissible line lengths**

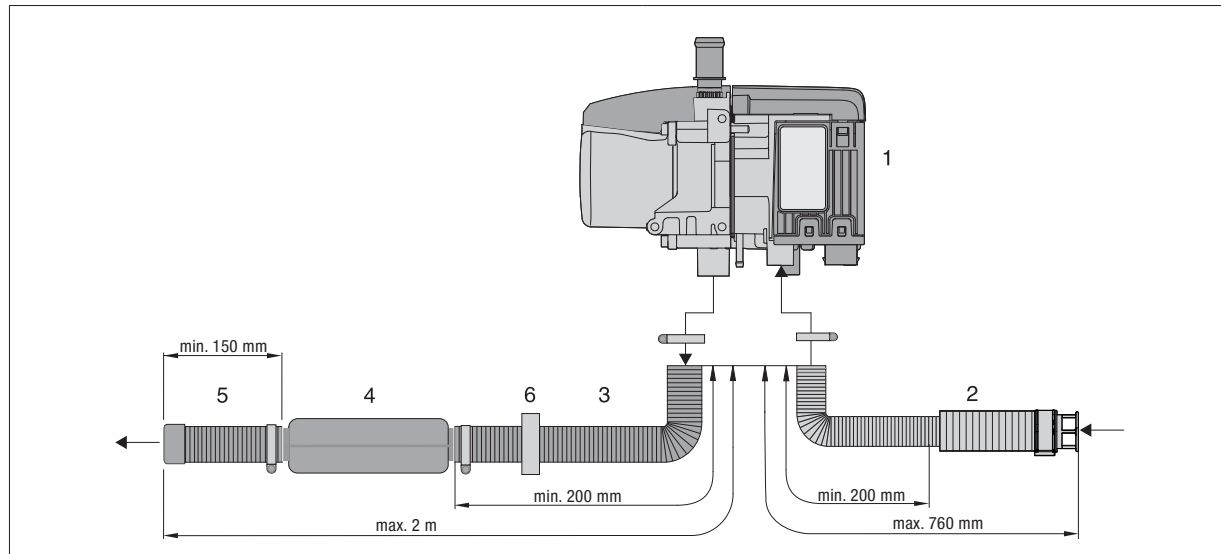
Intake side: a = max. 2 m

Pressure side: b = max. 6 m

**Do not exceed these !!**



#### 4. Exhaust



#### 5. Water pump

The furnace has been programmed to run without water pump. Water pump control is given to the Rixen controller. The water pump connector on the furnace is covered by a rubber cap.

The preferred position for the pump is 'hanging' under the tank (aka Comfort Hot). This insures that gravity feeds only fluid (no air bubbles) to the pump. The pump can push, but it can not 'pull' the fluid to the pump.

The pump should NOT be installed outside.

The 2nd generation of the Rixen BWO 355 can run in 2 speeds. In difference to the 1st generation, which had a knob, speed control is operated via a 3rd wire (white).

(If you have a 1st generation pump, please refer to version 2.1 of the Installation Notes.)

That white wire gets connected/combined with either:

- Ground wire (brown) for High speed
- Power wire (red) for Low speed

The high speed is recommended to purge the system of air bubbles.

For normal operation the low speed is recommended and should provide enough flow for 99% of installs. For extremely long and complex installs the high speed may be necessary..

Positioning:

