

Uspa
**Operating
Instruction Manual**

UB-6035R



- *Thank you for purchasing this USPA product.*
- *You are kindly requested to read carefully this operation manual for proper use of this appliance with due attention.*
- *Please save this manual and place in an easily accessible location.*
- *Please register Warranty for proper service.*

9 How to install



Do not plug in until installation is finished completely.
Not doing so may damage the appliance.

If electric work is needed, contact to the qualified electrician or serviceman only.

Remove the existing toilet lid and seat

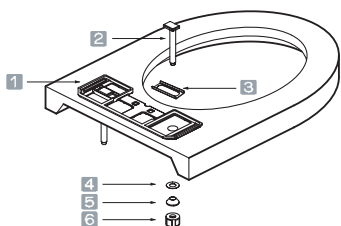
1. Remove the nuts, washers and cone packings from the toilet seat mounting bolts in the back of the toilet.
2. Remove the toilet seat, lid and mounting bolts.
3. Keep them in case of installing again.

Install the appliance

Installation

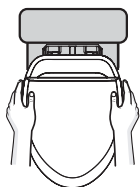
How to mount the plate

Place the plate and guides over each mounting hole. Insert the mounting bolts through the plate and mounting holes, and slide cone packings and washers onto the bolts.



- | | | |
|------------------|-----------------|---------|
| 1 Mounting plate | 2 Mounting bolt | 3 Guide |
| 4 Washer | 5 Cone packing | 6 Nut |

How to attach and detach the unit



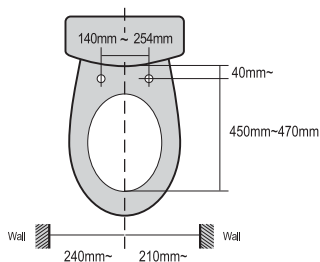
Slide the unit until it clicks into plate.



Lift the unit up and forward.

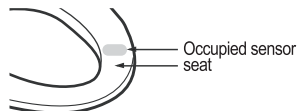
Toilet size (elongated & round front)

The toilet dimensions must be within those shown below. Do not install this appliance on a toilet that does not meet those dimensional requirements.



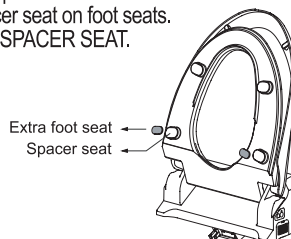
Occupied sensor

- This appliance is equipped with occupied sensor.
- Unit will not work unless seat is occupied.



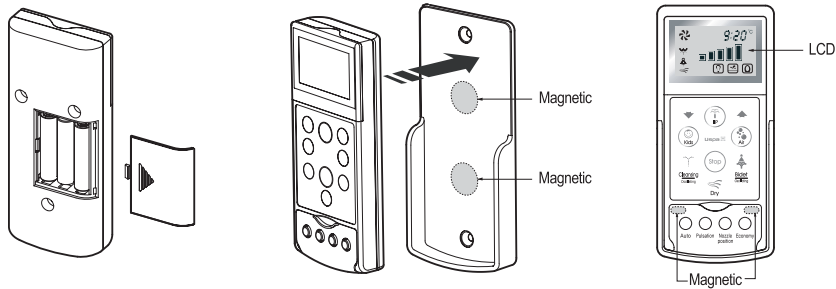
Install the SPACER SEAT

- If the bidet seat does not match toilet bowl properly, Spacer seat helps to be fitted. Attach the spacer seat on foot seats. The position of SPACER SEAT.



Installation of remote control unit

How to Insert batteries



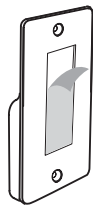
1. Open the battery lid of remote control and insert 3 AAA batteries into battery compartment.
2. Check the display appears properly.
3. Check the remote control works properly while seat is occupied.
4. Install the remote control bracket on the wall as shown below.

Note following precautions to prevent ruptured batteries and battery acid leakage.

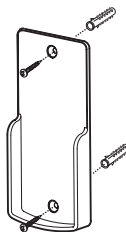
- Use 3 AAA batteries only and do not use rechargeable batteries.
- Do not use old and new batteries together and same type of batteries only.
- Make sure that all batteries are inserted into their correct positions.
- Remove the batteries if the remote control is not used for a long time.
- LCD would fades or blinks if the batteries reach the end of their life. Change the batteries immediately.
- Settings (time, power saving mode) will be lost when batteries are replaced.

How to attach remote control unit

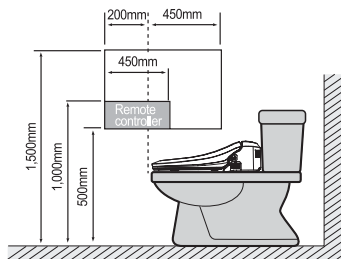
Use double sided tape



Use screw with plastic anchor

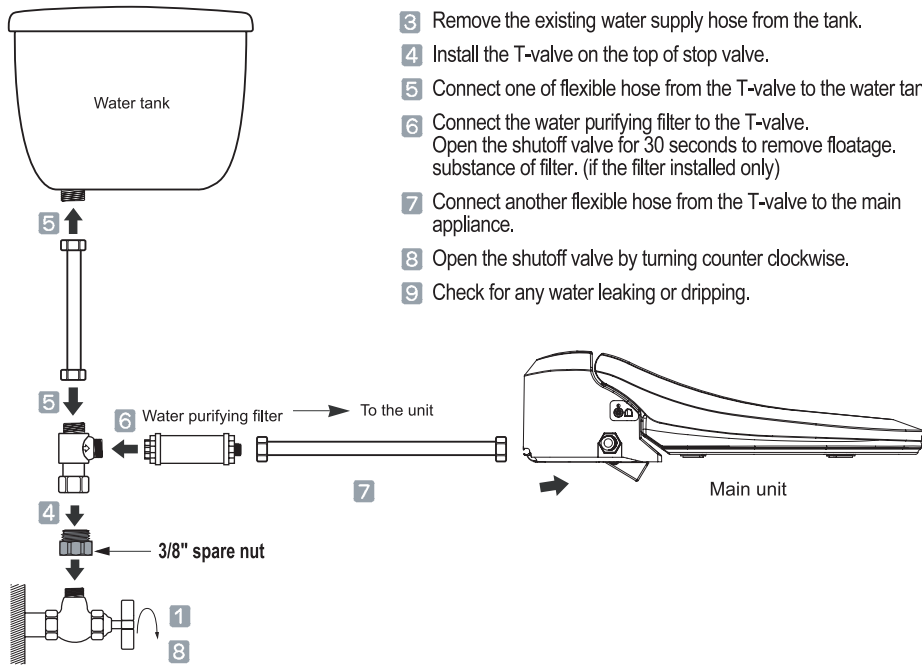


Recommended position of attachment



- Keep the remote control unit in the bracket to prevent damage by dropping.

Connecting the water hose and grounding wire



※ Water filter is optional.

Trial operation

1. Preparation

Open the shutoff valve and check for any water leaking or dripping.
 Plug the power cord into the outlet.
 Press the "BIDET" or "CLEANSING", then water tank will be filled with water in 2 minutes.
 After the water tank has filled up, you will hear long buzzer sound.

2. Checking all functions

Cover the toilet bowl using the plastic wrapping sheet of the unit to prevent the washing water from being sprayed out of the toilet.
 Then check for all function described in this manual.

3. There are possibilities of water coming out that remains in the unit while heating.



BBC INNOVATION

205 Berg St., Algonquin, IL 60102

Phone: 847_854_7292

Fax: 847_854_1296

E-mail: support@biobidet.com

www.biobidet.com