

NEOREST RH Dual Flush Toilet, 1.0GPF/0.8GPF

FEATURES

- TORNADO FLUSH® siphon jet flushing system, ultra high-efficiency (1.0GPF/3.8LPF and 0.8GPF/3.0LPF).
- CEFIONTECT® ceramic glaze minimizes debris and mold from sticking to porous, ceramic surfaces
- Auto open/close lid; auto flush
- Multifunction remote control
- Heated seat with temperature control
- Universal Height
- EWATER+®
- WASHLET® with three wash modes (front, rear, soft)
- Adjustable spray position
- Oscillating and pulsating comfort washing
- Built-in air purifying system
- Night light
- ADA Compliant
- Back-up manual flush
- Adjustable heated seat
- Programmable energy saver system



COMPONENTS

- SN988M - Top Unit
- CT989CUMFG - Elongated Bowl Unit

OPTIONAL COMPONENTS

- THU9660 - Water Supply Extension Kit (sold separately)

COLORS/FINISHES

- #01 Cotton
- #12 Sedona Beige

PRODUCT SPECIFICATION

The NEOREST RH with the TORNADO FLUSH system toilet shall be 1.0GPF/3.8LPF and 0.8 GPF/3.0 LPF. Toilet shall have CEFIONTECT ceramic glaze. Toilet shall be of skirted design, elongated front bowl with auto open and close seat. Toilet shall be **TOTO Model MS988CUMFG_____**.

- 1G 1 Gallon per Flush
- EWATER+
- U Universal Height
- TORNADO FLUSH
- CEFIONTECT

CODES/STANDARDS

- Meets and exceeds ASME A112.4.2, ASME A112.19.2/CSA B45.1, ASME A112.18.1/CSA B125.1, UL 1431, CSA C22.2 # 68
- Certifications: IAPMO(cUPC), State of Massachusetts, City of Los Angeles and others
- Code Compliance: UPC, IPC, NSPC, and others
- ADA Compliant
- Complies with CA Prop 65 warning requirements



MS988CUMFG

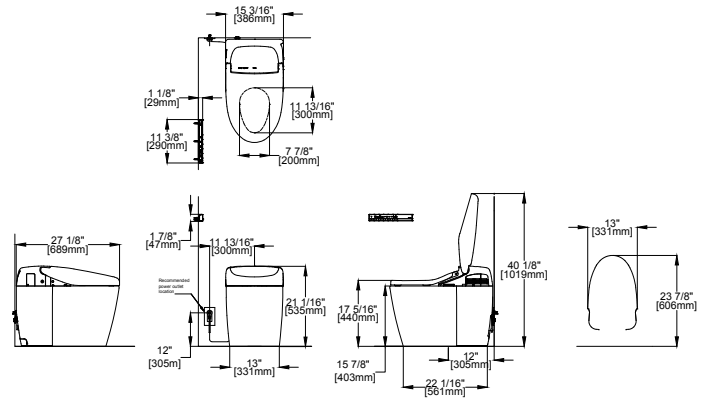
NEOREST® RH Dual Flush Toilet, 1.0GPF/0.8GPF

SPECIFICATIONS

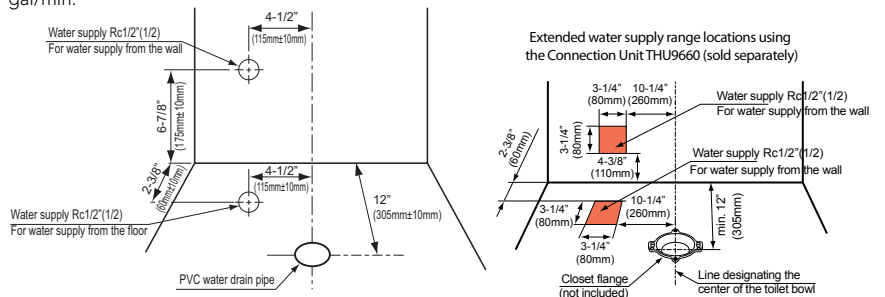
Water Use:	1.0 GPF/3.8 LPF & 0.8 GPF/3.0 LPF
Flush System:	TORNADO FLUSH Siphon Jet
Water Pressure:	Min 7.25 PSI (0.05MPa) Flowing Max 108.75 PSI (0.75MPa) static
Water Surface:	8-3/4" x 7-1/14"
Trap Diameter:	2-1/8" (54 mm)
Rough In:	12" rough in Warning: If there is a base board in the restroom, the center of the floor drain should be a minimum of 12" from the base board.
Trap Seal:	2-1/8" (54 mm)
Warranty:	Three Year Limited (Residential) One Year Limited (Commercial)
Material:	Bowl: Vitreous china Seat and cover: Plastic
Shipping Weight:	Top Unit - SN988M 18.7lbs Bowl Unit - CT989CUMFG 80 lbs
Shipping Dimensions:	SN988M - 31" x 17-3/4" x 11 5/16" CT989CUMFG - 16-1/2" x 21-1/2" x 29-1/2"

INSTALLATION NOTES

- For use with potable water only. Do not use with recycled water.



SPECIFIC	Power Rating	120V AC, 60Hz, 1290W
	Power Cord	Maximum length: 3.94ft (120cm)
Water Feature	Adjustable Water Flow Rate	Rear washing: from .08 to .11 gal/min. Soft washing: from .08 to .11 gal/min. Front washing: from .08 to .11 gal/min. Wide front washing: from .09 to .11 gal/min.
	Temperature of Washing Spray	Minimum: 86° F/30° C Maximum: 104° F/40° C
	Drying Feature	Safety Features: Thermal fuse Air Temperature: High: About 140°F (60°C) Low: About 95°F (35°C)
	Seat Warming Feature	Capacity of Air: 10.24 ft³/min Safety Feature: Thermal fuse Surface Temperature: Minimum: 82°F (28°C) Maximum: 97°F (36°C) Seat Heater Capacity: 50W Safety Feature: Thermal fuse
Air Purifying Feature	Method: O ₂ Deodorizer Air Volume: 5.7 ft³/min	
Ambient Temperature Range	32°F (0°C) to 104°F (40°C)	
Size	15-3/16" x 27 1/8" x 21 1/16"	
Weight	Net: 90 lbs.	



TOTO

These dimensions and specifications are subject to change without notice