

# USPA Integrated Bidet Toilet System

## Operating Instruction Manual

**Model : IB 835**

- Carefully read this operating instruction manual for proper use of this appliance.
- Register Warranty for proper service.
- If you have any questions, please call us.
- The IB 835 is just for AC 120V.



## READ ALL OPERATING INSTRUCTIONS BEFORE INSTALLATION.

### Notes

1. *This product should be installed according to this manual.*
2. *Read this manual carefully and install properly.*
3. *Retain this instruction manual in an easily accessible place.*
4. *Do not attempt to service this appliance yourself. Doing so will void the warranty.*

## Table of Contents

### PREPARATION

|                                 |   |
|---------------------------------|---|
| 1. IMPORTANT SAFEGUARDS         | 1 |
| 2. CAUTIONS BEFORE INSTALLATION | 1 |
| 3. IDENTIFICATION               | 3 |
| 4. SAFETY INFORMATION (DANGER)  | 4 |
| 5. SAFETY INFORMATION (WARNING) | 6 |

### INSTALLATION

|                   |   |
|-------------------|---|
| 6. HOW TO INSTALL | 8 |
|-------------------|---|

### USE

|                                   |         |
|-----------------------------------|---------|
| 7. HOW TO USE                     | 12 - 14 |
| ECONOMY MODE<br>CHANGE / SET TIME |         |

### ETC

|   |    |
|---|----|
| 8. HOW TO CLEAN   | 15 |
| 9. MAINTENANCE  | 17 |
| 10. CHECK THE FOLLOWING<br>TROUBLESHOOTING GUIDE<br>BEFORE CALLING IN FOR SERVICE | 18 |
| 11. SPECIFICATIONS  | 19 |
| 12. WARRANTY  |    |

# 1 Important Safeguards

## 1. READ ALL INSTRUCTIONS BEFORE USING

### **DANGER - To reduce the risk of electric shock:**

1. Do not place or store this appliance where it can fall or be pulled into a tub or sink.
2. Do not place in, or drop into water or other liquid.
3. Do not reach for a product that has fallen into water. Unplug immediately.

### **WARNING - To reduce the risk of burns, electric shock, fire or injury to persons.**

1. Close supervision is necessary when this appliance is used by or near infants, elders or handicapped persons. Children should not be permitted to use or touch this appliance without adult supervision. Be sure to adjust the toilet seat's temperature for the elders, handicapped persons, or people with sensitive skin.
2. Use this appliance only for its intended purpose as described in this manual. Do not use attachments not recommended by the manufacturer.
3. Do not operate this appliance if the cord is damaged or if the product is dropped into water.
4. Install the unit properly by following the installation procedure.
5. Only authorized persons can install or repair the unit. Do not attempt to service this appliance by yourself. Doing so will void the warranty.
6. Keep the cord away from heated surfaces.
7. Never drop or insert any objects into any opening or hose.
8. Do not use outdoors. Do not use aerosol or oxygen spray products on the unit.
9. Always follow the grounding instruction in this manual before plugging in the unit.

## SAVE THESE INSTRUCTIONS

# 2 Cautions before installation

## 1. NOTE THE FOLLOWING IMPORTANT POINTS

1. Do not install in a location where water might be splashed on this appliance or in a location exposed to excessive moisture where condensation might form on the product's surface.
2. To avoid damage to electronic components due to high levels of humidity, provide adequate ventilation by opening a window and/or door when bathing.
3. Water supply should have a water pressure of 11.38 psi to 106.68 psi
4. Connect the a product to pipe carrying potable water. Do not connect to an industrial water line or other water supplies that are not potable.
5. Cool the unit in the room before installation.
6. The thermal protector in the water tank may malfunction when transporting or storing warm water.
7. The rated power voltage is 120V AC, 60Hz.
8. Do not plug the unit in until installation is complete. It may result in malfunction.

## 2 Cautions before installation

### 2. WIRING REQUIREMENTS

1. Any other servicing should be performed by an authorized service representative.

#### 2. GROUNDING INSTRUCTIONS

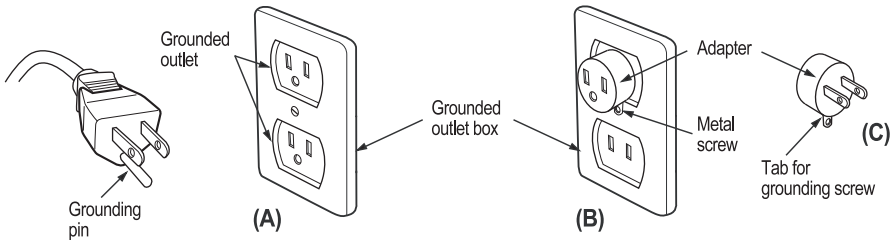
This product should be grounded. In the event of an electrical short circuit, grounding reduces the risk of electric shock by providing an escape wire for the electric current. This product is equipped with a cord having a grounding wire with a grounding plug. The plug must be plugged into an outlet that is properly installed and grounded.

**DANGER-Improper use of the grounding plug can result in a risk of electric shock.**

If the cord or plug is necessary to repair or needs to be replaced, do not connect the grounding wire to a flat blade terminal. The grounding wire can be identified by its insulated outer surface. It will either be colored green or will not contain yellow stripes.

Check with a qualified electrician or serviceman if you do not understand grounding instructions, or if you do not know whether the product is properly grounded.

3. This product is for use on a nominal 120V circuit, and has a grounding plug that looks like the plug illustrated in sketch A. A temporary adapter, which looks like the adapter illustrated in sketches B and C, may be used to connect this plug to a 2-pole receptacle as shown in sketch B if a properly grounded outlet is not available. The temporary adapter should be used only until a properly grounded outlet (sketch A) can be installed by a qualified electrician. The green colored rigid ear, lug and the like extending from the adapter must be connected to a permanent ground such as a properly grounded outlet box cover. Whenever the adapter is used, it must be held in place by the screw.



4. If it is necessary to use an extension cord, use only a three wire extension cord that has a three-blade grounding plug, and a three-slot receptacle that will accept the plug on the product. Replace or repair a damaged cord.

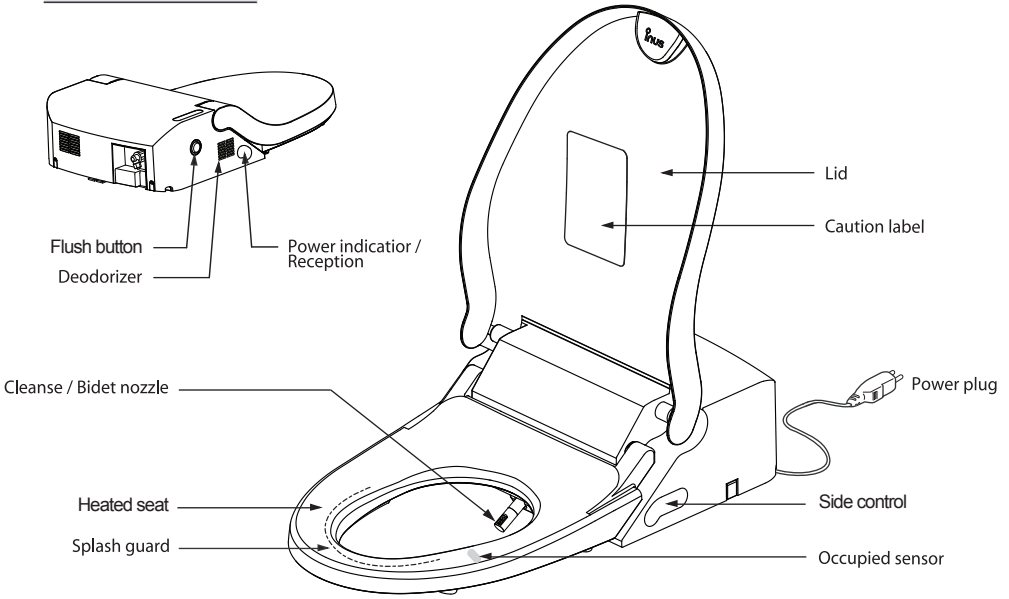
5. Remote control power : AAA(1.5V) , 3EA

### CAUTION

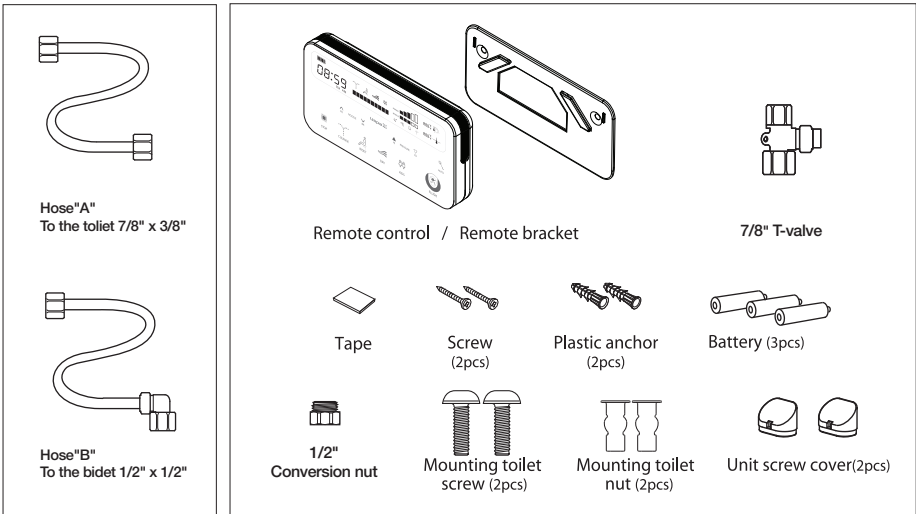
**RISK OF EXPLOSION TO BATTERY IF REPLACED BY AN INCORRECT TYPE.  
DISPOSE OF USED BATTERIES ACCORDING TO THE INSTRUCTIONS**

# 3 Identification

## Main unit



## Accessories



\* Hose "A" Packed in Ceramic package

# 4 Safety Information (Danger)



## DANGER

Follow basic instructions to ensure the safe use of your appliance



Indicates a prohibited use of the appliance.



Indicates a required step in use of this appliance.



PROHIBITED



DO NOT HANDLE WITH WET HANDS



USE OF FIRE PROHIBITED



DO NOT DISASSEMBLE



DO NOT SPRAY WATER



GROUND CONNECTION



REQUIRED STEP



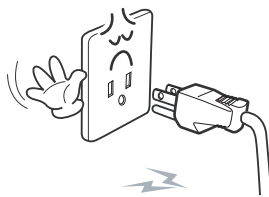
Meanings of symbols



PROHIBITED

### Do not use a faulty or loose electric outlet or cord

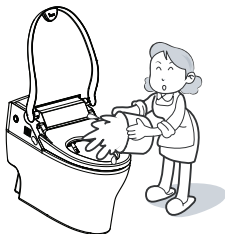
Doing so may result in a short circuit, electric shock or fire.



DO NOT SPRAY WATER

### Do not splash water on this product

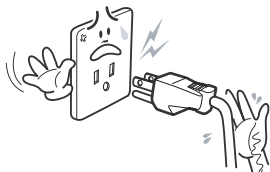
Doing so may result in fire or electric shock.



NO WET HANDS

### Plug and unplug properly

Do not plug or unplug with wet hands. It may result in injury or short circuit.  
Do not grab the cord when unplugging. Pull out the plug properly.



USE OF FIRE PROHIBITED

### Do not throw anything flammable into the toilet

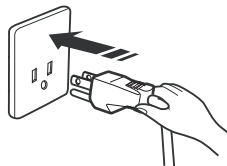
Doing so may result in fire.



GROUND CONNECTION

### This product must be grounded

If avoided, it may result in short shock or malfunction, if no grounded wire.  
If no grounded plug is used, make sure to install grounded wire.





## DANGER

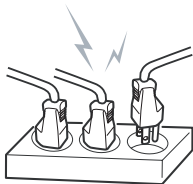
Follow basic instructions to ensure the safe use of your appliance



PROHIBITED

### Do not use many appliances in a power strip

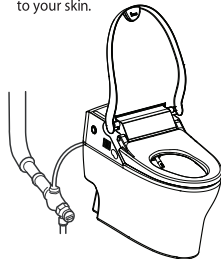
- Doing so may result in fire or damage.
- Be sure to use a dry and clean outlet.
- Do not use a faulty or loose outlet.



PROHIBITED

### Use tap potable water only (Drinking water)

- Not doing so may cause irritation or injury to your skin.



DO NOT DISASSEMBLE

### Do not use when the seat and lid are disassembled

- Doing so may result in electric shock due to high voltage inside.



DO NOT DISASSEMBLE

### Do not disassemble, repair or modify this appliance

- Doing so may result in fire or electric shock.



REQUIRED

### Do not obstruct or put anything into the dry air outlet

- If the dry air outlet is obstructed with any objects, it may result in fire.
- If the dry air outlet is obstructed with hands, it may result in injury.



REQUIRED

### Unplug when beeping or smelling strangely

- Unplug right away.
- Contact your dealer where you bought this appliance.



# 5 Safety Information (Warning)



## WARNING

Follow basic instructions to ensure the safe use of your appliance



PROHIBITED

### Be aware of a low-grade burn

- It may result in a low-grade burn if sitting on the heated seat for a long time.
- Be aware if being used by the following:
  - Children, senior citizens, patients, or who cannot control the grade of temperature.
  - Sleeping pills users, or people who are on medication that causes drowsiness.
  - Who are drunk or very tired and may fall asleep while sitting on the unit.
- If injured in a low-grade burn, see a doctor immediately.



PROHIBITED

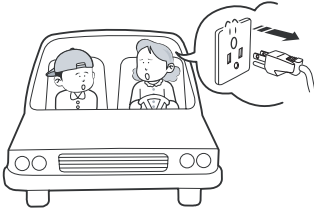
### Do not step on or place heavy objects on this appliance

- Doing so may damage the unit.
- Do not step on a lid, seat or control panel to avoid injury or damage.



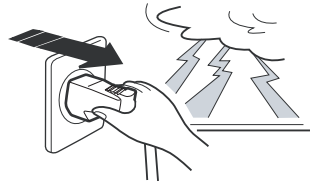
REQUIRED

### Unplug while not using over extended period of time



REQUIRED

### Unplug while there is thunder or lightening



REQUIRED

### Use this appliance on a toilet only

- Not doing so may result in fire, injury or electric shock.



Improper use



PROHIBITED

### Do not pull out water hose forcefully

- Doing so may cause water leakage.







## WARNING

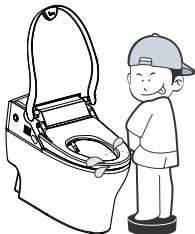
Follow basic instructions to ensure the safe use of your appliance



### Be aware of urine splash on a nozzle or warm air outlet

REQUIRED

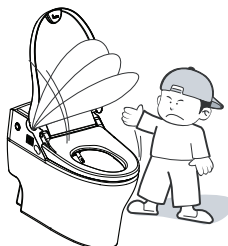
- Not doing so may result in smelling of products or failure.



### Do not force the lid to close

REQUIRED

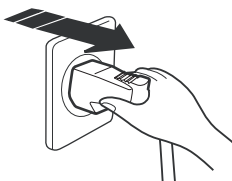
- Doing so may cause malfunction.



### Unplug when cleaning

REQUIRED

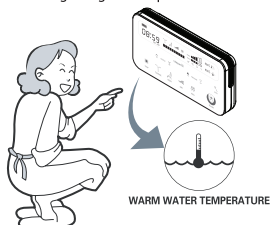
- Not doing so may result in fire or electric shock.



### Use the low temperature for children and disabled

REQUIRED

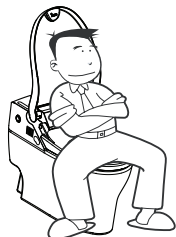
- If temperature settings are too high, it may result in a burn due to user not recognizing the temperature.



### Do not sit or lean against the lid or control panel

PROHIBITED

- Doing so may cause malfunction or breakage.



### Do not put a vase cup or small materials on this appliance

PROHIBITED



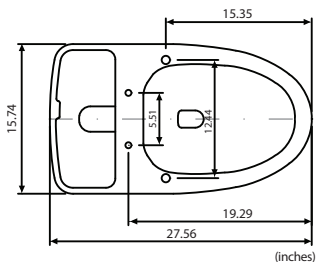
# 6 HOW TO INSTALL

## ! WARNING

Do not plug in until installation is finished completely. Not doing so may damage the appliance.

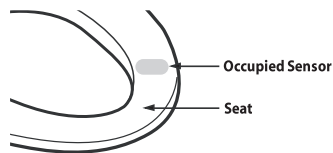
### TOILET SIZE

- This product is installed with C800 toilet only.



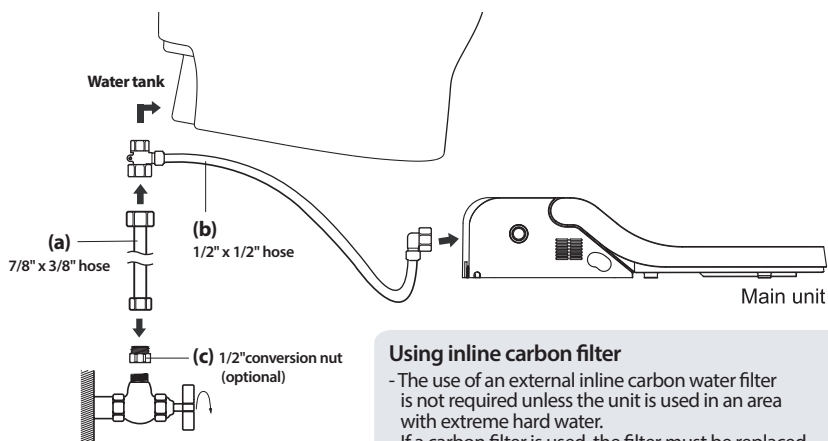
### SEAT SWITCH

- It has a seat switch. If you do not sit on the seat, it does not work.
- It will stop working if the user stands up during cleansing.



## CONNECTING THE WATER HOSE AND GROUNDING WIRE

- Remove existing hose.
- Connect T valve to toilet fill valve.
- Connect supplied 7/8" x 3/8" hose (a) from T valve to shut off valve.
- If your shut off valve is 1/2", use supplied 1/2" conversion nut (C).
- Connect supplied 1/2" x 1/2" hose (b) from T valve to bidet seat inlet.
- Open the shutoff valve by turning counter clockwise.
- Check for any water leaking or dripping.



### Using inline carbon filter

- The use of an external inline carbon water filter is not required unless the unit is used in an area with extreme hard water. If a carbon filter is used, the filter must be replaced every 6 months. Inline carbon filters can be purchased from any authorized Bio Bidet reseller.

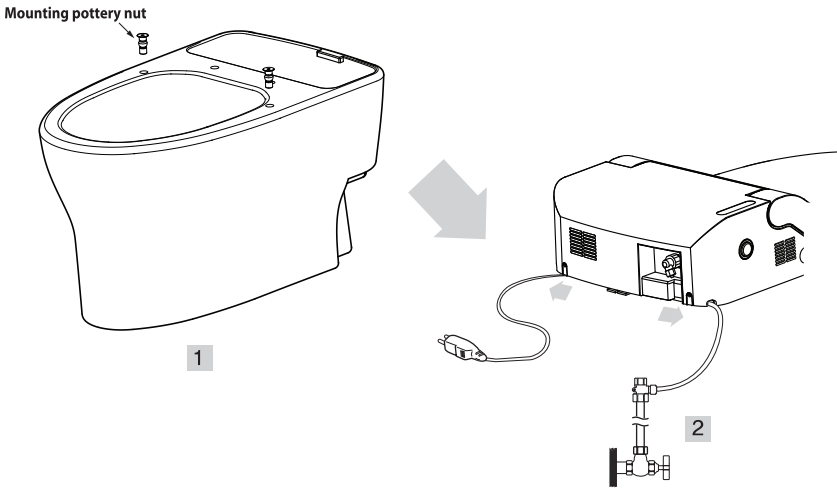
## HOW TO INSTALL THE UNIT

### 1. HOW TO ASSEMBLE NUT FOR MOUNTING TOILET

- 1) Insert mounting pottery nuts into empty holes. Refer to picture 1.

### 2. HOSE CONNECTION AND POWER CORD ARRANGEMENT

- 1) Connect T-Valve integrated hose to bidet. (Refer to 10page)
- 2) Place power cord into the cable management areas under the bidet.
- 3) Insert wire to wire cord home.
- 4) Insert bidet to toilet carefully in order to keep the hose and wire cord from being damaged.



### 3. INSERT BIDET ON TOILET

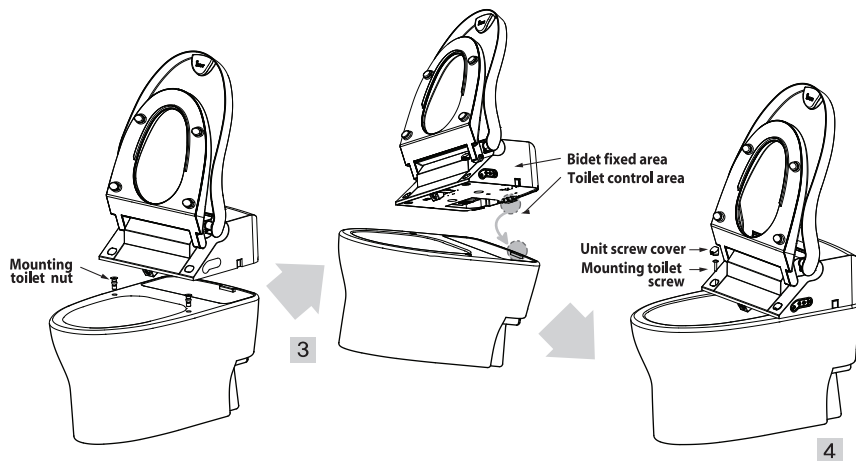
- 1) Slide the unit until it rests securely on the toilet.

### 4. FASTEN BIDET ON TOILET

- 1) Once the bidet is placed on the toilet, fasten it with the provided bolts.
- 2) Cover bolts with white silicone angle covers.
- 3) Plug the power cord into the outlet.

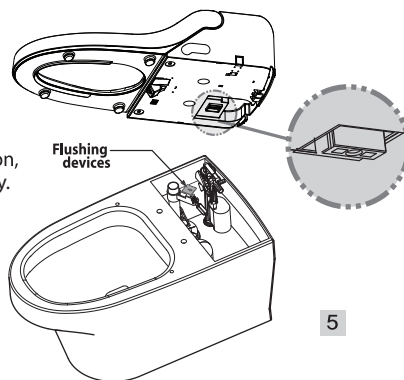
# 6 HOW TO INSTALL

## HOW TO INSTALL THE UNIT



## 5. HOW TO CONFIRM THE FLUSHING LOCATION

1) If user pushes the flushing button after installation, confirm the bidet and toilet are flushing properly.



## TRIAL OPERATION

### 1. Preparation

Plug the power cord into the outlet to fill the water tank in the bidet.

### 2. Checking all functions

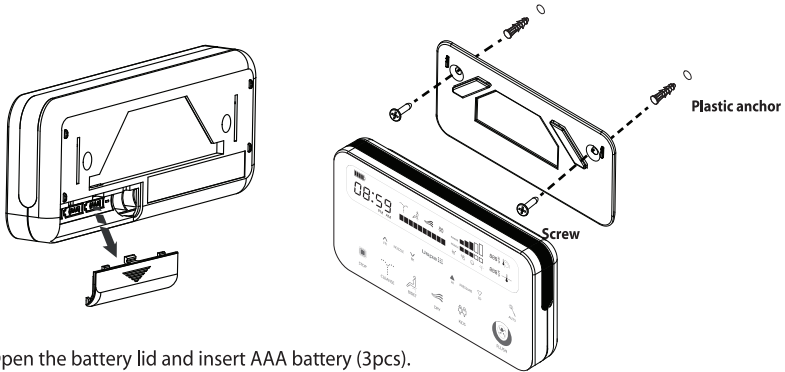
Cover the toilet bowl using the plastic wrapping sheet of the unit to prevent the washing water from being sprayed out of the toilet.

Then check for all function described in this manual.

### 3. Water residue that remained in the toilet may come out while heating the bidet.

## HOW TO INSTALL REMOTE CONTROL

### HOW TO INSTALL REMOTE CONTROL




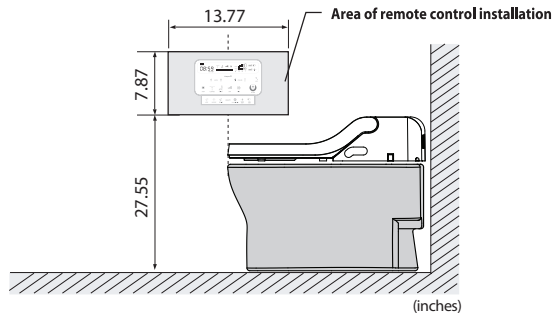
1. Open the battery lid and insert AAA battery (3pcs).
2. Check that the display appears properly.
3. Make sure you can reach the remote while seated.
4. Fasten the remote control bracket with double sided adhesive tape on the proper area of the wall as shown below.

#### **\* CAUTION \***

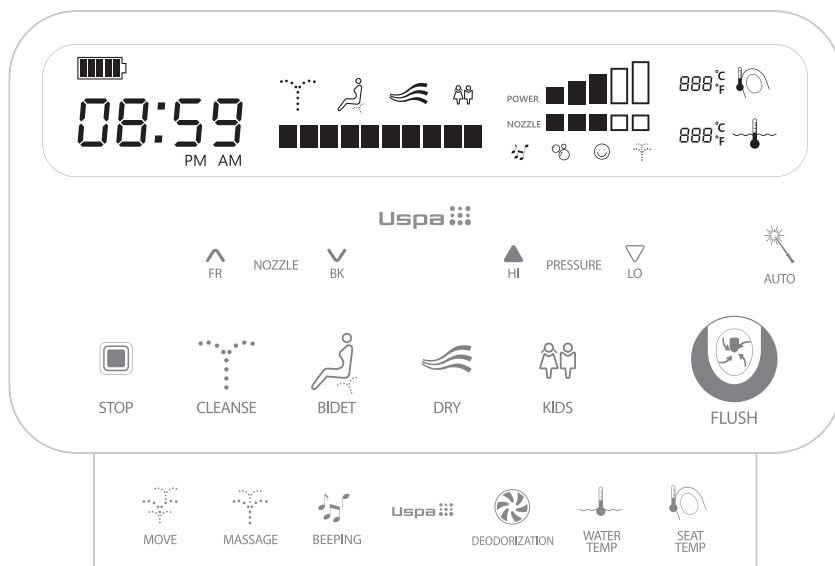
- Use the battery AAA (3pcs).
- Do not use old and new batteries together and use the same type of batteries only.
- Remote control and remote control mounting panel have a magnet.
- Place the remote control far away from any material that can damage magnet or card.
- Change battery if LCD is flickering or return to the start up screen.

### THE RECOMMENDED INSTALLING POSITION OF THE REMOTE CONTROL

-  Install the remote control on the wall.  
Keep the remote control in the bracket to prevent damage by dropping.



# 7 HOW TO USE



## STOP

- Press "STOP" to stop current operation.
- When a user stands up, all operation will stop automatically.

## CLEANSE

- Press "CLEANSE" to clean your posterior. The function will stop in 60 seconds automatically.
- Press this button again to activate oscillation. The nozzle moves back and forth automatically to widen cleansing area.
- Oscillation wash stops if this button is pressed again.

## BIDET

- Press "BIDET" for feminine wash. The function will stop in 60 seconds automatically.
- Press this button again to activate oscillation. The nozzle moves back and forth automatically to widen cleansing area.
- Oscillation wash stops if this button is pressed again.

## DRY

- Press "DRY" after "CLEANSING" or "BIDET". Warm air will come out for 3 minutes.
- To alter the strength of drying, press the button again.

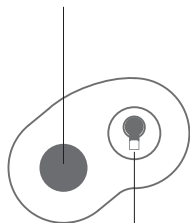
## KIDS

- Press "KIDS" to change all functions to be suitable for children.
- [Cleanse(1 min.) - Dry(3 min.)] with level 1 of water pressure and level 5 of nozzle position will operate automatically.
- This unit should be used under the supervision of an adult.

## FLUSH

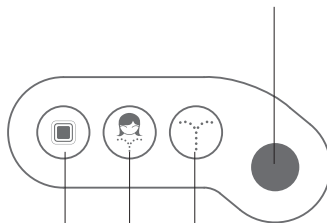
- Press "FLUSH" to give the toilet a flush. Whenever the user presses the button, the water will flush down the toilet.
- It will operate automatically after each toilet use.

Remote control receiver



Power saving

Remote control receiver



Stop Bidet Cleanse

## AUTO

- Press AUTO button during "CLEANSE" or "BIDET".
- [Cleans/Bidet - Oscillating wash - Dry] will operate consecutively 20 seconds each.

## MOVE

- Press "MOVE" button during "CLEANSE" or "BIDET". The nozzle moves back and forth to widen cleansing area.
- Press "MOVE" again to release this function.

## MASSAGE

- Press "MASSAGE" to activate rhythmical wash for massage effect.
- Press "MASSAGE" again to release this function.

## BEEPING

- Press 'BEEPING' button to enable beeping sound.
- To disable, press the button again.

## DEODORIZATION

- Press 'DEODORIZATION' button to activate deodorizer automatically. (Max 20 min)
- When the user stands up, deodorization stops after 60 seconds.
- To disable, press the button again.

## WATER TEMP / SEAT TEMP

- Water and Seat temperatures can be adjustable from 1 to 5 levels by pressing the buttons.
- Both temperatures will be initialized after each use.

## NOZZLE POSITION (FR/BK)

- Nozzle position can be adjustable from 1 to 5 levels by pressing NOZZLE "FR/BK" buttons.
- Nozzle position will be initialized after each use.

## WATER PRESSURE (HI/LO)

- Water spray pressure can be adjustable from 1 to 5 levels by pressing PRESSURE "HI/LO" buttons.
- Water pressure will be initialized after each use.

### ※ CAUTION

- Be careful not to drop your remote control in water.
- It may stop working or cause malfunction.

- Don't forcefully push or pull the nozzles. Doing so may cause malfunction.
- When the power is plugged in initially, nozzles for feminine wash and posterior will come out in turn.

## ECONOMY MODE

- On the remote press and hold the "STOP" button for 3-5 seconds.  
The unit will be in economy mode after 1 hour of last use.
- In economy mode, temperature of water and seat will be kept to 30 degrees Celsius.  
"Eco" will be displayed on the remote control LED screen next to both the seat temperature gauge as well as the water temperature gauge.
- When the unit is occupied during economy mode, temperature will be returned original setting levels and goes back to economy mode after 1 hour of last use.
- Press and hold the "STOP" button again for 3-5 seconds again to release the economy mode function.

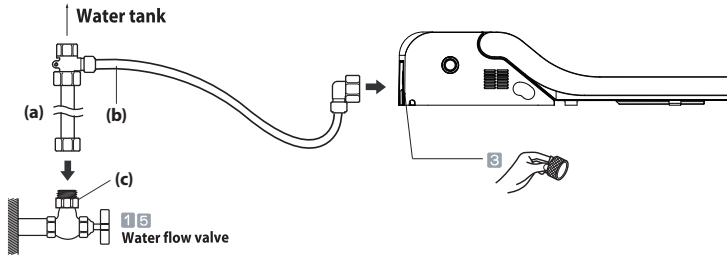
## CHANGE / SET TIME

- On the remote press and hold the "Pressure Lo" (down arrow) for 3-5 seconds.
- The hour setting will begin to flash.
- Pressing the "Nozzle FR" or "Nozzle Bk" buttons will toggle between hours and minutes.
- Use the "Pressure Hi" and "Pressure Lo" (Up and down arrows) to change the hour and minutes.
- Once the time is set correctly, press the "STOP" button to accept the changes.



## 8 HOW TO CLEAN

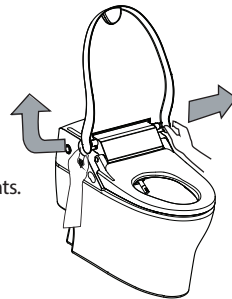
### INTERNAL WATER FILTER CLEANING



1. Turn water flow valve clockwise to close it.
2. Turn water flow hose (bidet) nut counter clockwise to remove it.
3. Put screen into the unit after cleaning it with a toothbrush.
4. Reattach the water hose to the bidet.
5. Reopen the water valve.

### EXTERNAL CLEANING

1. Regularly wipe off the body with a dry soft cloth or sponge or dampen with neutral detergent.
2. Release the lid.
  - 1) Pull left and up on the left hinge part.
  - 2) Release the right hinge part.  
(Be aware your fingers not to be caught)
3. Do not use any cleaners which are not safe to use on toilet seats.  
(Not to use: Toilet cleanser, Home cleanser, bleach, benzene, paint thinner, cresol etc.)



## NOZZLE CLEANING



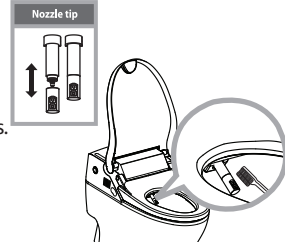
Do not force to push, pull, or bend the nozzles. It may result in malfunction. Make sure to use "cleansing" button on the remote control.

### ■ MANUAL CLEAN

1. Do not sit on the seat
2. Press "CLEANSE" button, Cleanse nozzle comes out.  
Press the button again, Bidet nozzle comes out.  
(Press "FR" button, Cleanse nozzle comes out.  
Press "BK" button, Bidet nozzle comes out.)
3. Do not forcefully push or pull the nozzles, or bend them. Use a toothbrush or soft cloth to clean nozzles. Press "STOP", "FR", "BK" and nozzles will return to stand-by mode.  
For extended period of time cleaning, unplugged for safety.
4. Do not retract nozzles without a nozzle tip. It may result in malfunction.

### ■ AUTOMATICALLY CLEANSE

1. Using passive cleansing simultaneously, if the user pushes "BK" button over 3 seconds, cleansing and bidet nozzles will be cleaned automatically for 30 seconds.
2. Don't grab nozzle during nozzle cleansing.  
Doing so may damage the appliance.
3. If you want to stop cleaning nozzle, push "Stop" button.



## TOILET CLEANSING

### ■ AUTOMATIC FLUSH

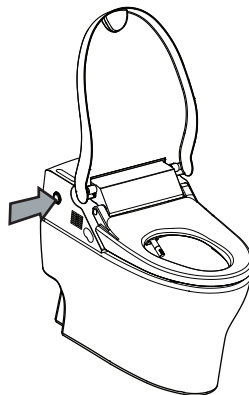
- After using the bidet, the toilet will automatically flush when user stands up.

### ■ TO FLUSH

- Push the "flush" button on the remote to flush.

### ■ FLUSH WITHOUT POWER

- No Power is required to flush, simply push the flush button on the side of the unit.

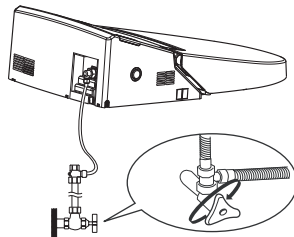
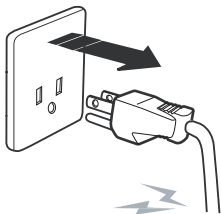


## 9 MAINTENANCE

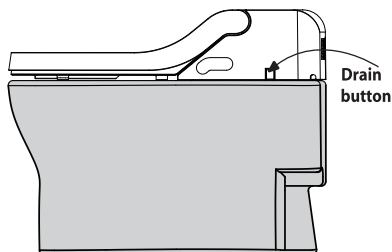
### DRAINING WATER- WHILE NOT USING OVER EXTENDED PERIOD OF TIME.

- 1 **Unplug the power supply cord.**
- 2 **Close the shutoff valve.**

■ Not doing so may cause fire.



- 3 **Hold the drain button to empty tank.**



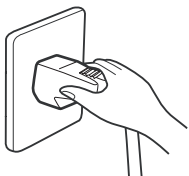
### PREVENTING FREEZING

- 1 **Make sure the power cord is plugged in properly.**
- 2 **Set the temperature of water to low or middle.** (Freezing can be prevented by keeping the water heater on.)

■ If there is no heating system in the toilet, wrap pipes with cloth or other materials.

- 3 **Not using the unit during winter season?**  
-Unplug and drain the water from the water tank and pipes thoroughly.

■ Refer to the water drain method.



## Check first

- Does the Occupied Sensor LED light up when you cover the skin sensor on the seat ?
- If the Economy Mode LED is lit, the temperature settings for the seat and water will be on low
- Replace the remote control batteries and point the remote directly at the transmitter on the main unit

| PROBLEM                                       | POSSIBLE CAUSE   | POSSIBLE SOLUTION   |
|---|--|---|
| Unit completely fails to work or power on     | <ol style="list-style-type: none"> <li>1. Power outage</li> <li>2. Unit is not plugged in</li> <li>3. Faulty receptacle</li> <li>4. Skin sensor is not activated</li> </ol>  | <ol style="list-style-type: none"> <li>1. Reset the GFI outlet</li> <li>2. Plug the power cord in to a GFI outlet</li> <li>3. Test another appliance in the outlet</li> <li>4. Activate the skin sensor on the unit</li> </ol>  |
| Nozzle does not extend                        | <ol style="list-style-type: none"> <li>1. Remote control is not working</li> <li>2. Nozzle is dirty</li> <li>3. External bidet filter</li> <li>4. Skin sensor is not activated</li> <li>5. Seat riser is covering the skin sensor</li> </ol> | <ol style="list-style-type: none"> <li>1. Replace the remote control batteries<br/>- try to operate the unit with the side control panel</li> <li>2. Clean the nozzle</li> <li>3. Remove the external bidet filter</li> <li>4. Activate the skin sensor on the unit</li> <li>5. The seat riser must go underneath the bidet seat</li> </ol> |
| Low water pressure                            | <ol style="list-style-type: none"> <li>1. Clogged nozzle tip</li> <li>2. Water pressure is set to low on remote</li> </ol>   | <ol style="list-style-type: none"> <li>1. Clean the nozzle tip</li> <li>2. Raise the water pressure on the remote control</li> </ol>  |
| Seat is not heating                           | <ol style="list-style-type: none"> <li>1. Unit is set on Economy mode</li> <li>2. Remote control batteries</li> </ol>  | <ol style="list-style-type: none"> <li>1. Turn off Economy mode</li> <li>2. Replace batteries</li> <li>3. Unplug the unit for 10 sec.</li> </ol>  |
| Stops in the middle of use                    | <ol style="list-style-type: none"> <li>1. Washing or drying exceeded cycle time</li> <li>2. Skin sensor lost contact</li> <li>3. Clogged nozzle tip</li> </ol>   | <ol style="list-style-type: none"> <li>1. Press the wash or dry mode again</li> <li>2. Activate the skin sensor with full skin contact through the entire cleansing period</li> <li>3. Clean the nozzle tip</li> </ol>  |
| Water coming out from the nozzle unexpectedly | <ol style="list-style-type: none"> <li>1. Self-cleaning</li> </ol>   | <ol style="list-style-type: none"> <li>1. The unit will self-clean the nozzle before and after each use automatically</li> </ol>  |

## CHECK THE FOLLOWING TROUBLESHOOTING GUIDE BEFORE CALLING IN FOR SERVICE

| PROBLEM                    | POSSIBLE CAUSE   | POSSIBLE SOLUTION  |
|----------------------------|--|--|
| Water leaking continuously | <ol style="list-style-type: none"> <li>1. Leaking from hose connection at the unit</li> <li>2. Leaking from T-valve</li> <li>3. Leaking from behind or under the tank</li> </ol> | <ol style="list-style-type: none"> <li>1. Check to make sure that all rubber washers are in place and do not over tighten the connection but it should be secure</li> <li>2. Check to make sure that the rubber washer is in place with the flat side pointing up</li> <li>3. Check that the drain is not opened on the unit if the unit continues to leak, immediately disconnect it from the water supply, drain the tank, and contact the BBC service center</li> </ol> |

## 11 SPECIFICATIONS

| ITEM                  |                     | IB 835   |
|-----------------------|---------------------|--|
| STANDARD POWER SUPPLY |                     | 120V 60Hz 1248W                                    |
| Water supply          | Way of connection   | Direct connection to tap water                     |
|                       | Water pressure      | 11-106psi  |
| Clean-<br>sing        | Spray for cleansing | 600 (±100)mL/min                                   |
|                       | Spray for bidet     | 700 (±100)mL/min                                   |
|                       | Water capacity      | 70 (±20)mL   |
|                       | Spray temperature   | Room Temp~104°F                                    |
|                       | Heat capacity       | 1200W  |
|                       | Safety feature      | Thermal switch, Temperature fuse, Floating switch  |
| Heated<br>seat        | Seat temperature    | Room Temp~104°F                                    |
|                       | Heater capacity     | 48W  |
|                       | Safety feature      | Temperature fuse                                   |
| Deodorization method  |                     | Catalytic filter                                   |
| Circuit breaker       |                     | Within 15mA 0.03 second                            |
| Length of power cord  |                     | 1.5m   |
| Dimensions            |                     | (W)15.75 inches X (L)27.56 inches X (H)6.10 inches |
| Weight                |                     | 12.13 lbs  |

※ Recommended water supply pressure are 11-106psi

※ The minimum available water supply pressure is 0.08Mpa~0.1Mpa, however under 0.1Mpa pressure, water spray pressure might not be strong enough.

# MEMO



If you need any help,  
Please call us.

**CUSTOMER CENTER**  
**847.458.2334**

**BBC INNOVATION**  
204 Berg St., Algonquin, IL 60102

# WARRANTY

## USPA Personal Hygiene Appliance Limited Warranty

- We warrant our products to be free from manufacturing defects under normal use and service for a period of limited three (3) years from the date you purchase.
    - 100% Coverage of all parts and labor for the entire product for the first year from original date of purchase.
    - 75% Coverage of all parts and labor for the entire product for the second year from original date of purchase.
    - 50% Coverage of all parts and labor for the entire product for the third year from original date of purchase.This warranty is only valid within the United States and Canada.
  - Our obligation to you under this warranty is limited to repair or replacement, at our option, of defective products or parts, provided that the products were properly installed and used in accordance with instructions. We reserve the right to make inspections in order to determine the cause of the defect. We will not charge for labor or parts in connection with warranty repairs or replacement. We are not responsible for the cost of removal, return and/or reinstallation of products.
  - This limited warranty does not apply to:
    - a) Damage or loss from a fire, earthquake, flood, storm, etc
    - b) Damage or loss resulting from any unreasonable use, abuse, negligence, or improper maintenance.
    - c) Damage or loss from improper installation, removal, repair, or modification.
    - d) Damage or loss resulting from sediment or other matters contained in your water system.
  - This warranty gives you specific legal rights.
  - For warranty or service information, please contact your dealer where you bought this appliance or us.
  - Only the original purchaser may submit a claim under this limited warranty. To activate your warranty, complete this form.
  - This limited warranty is our only warranty covering your product. Repair or replacement as provided under this warranty shall be the exclusive remedy available to you. We shall not be responsible for loss of the product or for other incidental, or consequential damage or expenses you may incur or for labor or other costs due to installation or removal, or cost or repairs by others, or for any other expense not specifically stated above. Except to the extent prohibited by applicable law, any implied warranties, including that of merchantability or fitness for use, are expressly limited to the duration of this warranty.
- ※ Warning! We are not responsible or liable for any failure of, or damage to, this plumbing product or product component caused by in-tank bowl cleaners containing chlorine(calcium hypochlorite).
- ※ Note : The use of high concentration of chlorine related products can seriously damage the fittings. This damage can cause leakage and serious property damage.

For more information, please contact your dealer or us.

Purchase Date \_\_\_\_\_ Purchased From \_\_\_\_\_  
Full Name \_\_\_\_\_ Amount Paid \_\_\_\_\_ Serial # \_\_\_\_\_  
Address \_\_\_\_\_ City \_\_\_\_\_ State \_\_\_\_\_ Country \_\_\_\_\_ Zip \_\_\_\_\_  
Phone \_\_\_\_\_ Fax \_\_\_\_\_ E-mail \_\_\_\_\_

Mail, email or fax the warranty form to :

**BBC INNOVATION**

204 Berg St., Algonquin, IL 60102

Phone: 847-458-2334 Fax: 847-854-1296

E-mail: support@biobidet.com <http://www.biobidet.com>

**SAMHONGTECH CO., LTD.**

2F, Eunsung Building, 741, Yeongdong-daero, Gangnam-gu,  
Seoul, Korea

TEL:82-2-3449-2341 FAX:82-2-3445-1686

E-MAIL : info@isdongseo.co.kr <http://www.samhongtech.com>

**Great products for your healthy living !**