

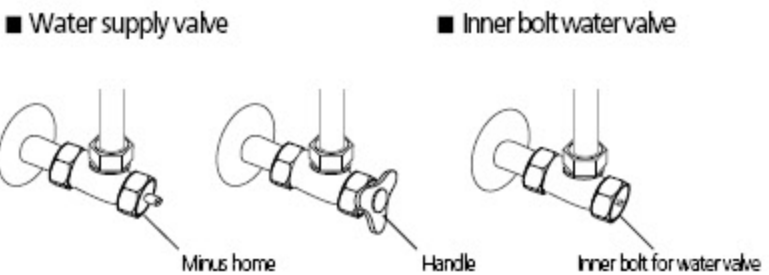
# 3 Installation

## Caution

- This product requires 120V usage.
- Please do not plug in the electrical cord prior to installation.
- Please consult with a licensed electrician if electrical work is needed, and in case a grounded outlet is not available, grounding should be done in order to prevent short circuits or electric shock.

### Check the water valve

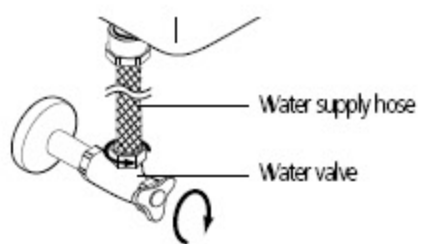
Check the water valve in the bathroom. You may need to consider purchasing additional components. For the following case, the T-valve alone is sufficient for connection.



- Professional engineering is needed for plumbing work on specialized water pipes and flush valve pipes.
  - Please consult with a qualified specialist.
  - Please put the unused water hose in a secure area.

### Installation steps

**1** Shut water supply by turning it to the right and disassemble the water hose.

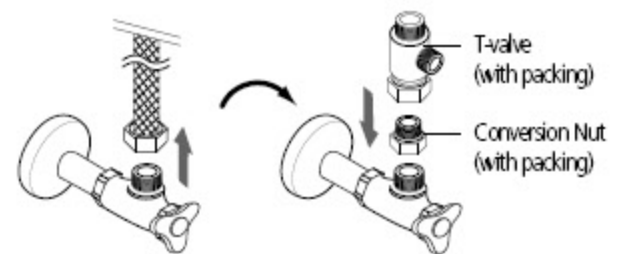


**2** Remove existing seat and lid.

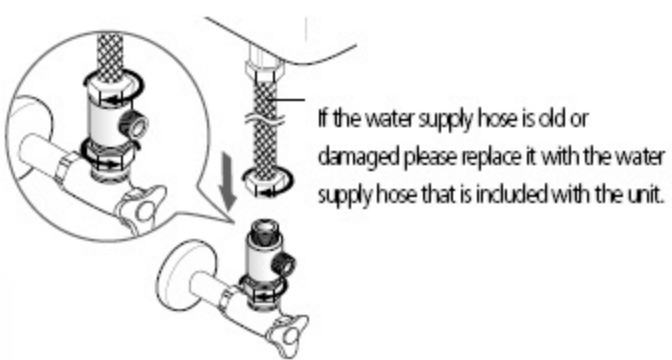
- Release the bolts on both sides of the existing toilet seat to remove the seat and lid.
- Store the removed seat, nut and water hose in a safe area in case you move or it needs to be reinstalled.



**3** Connect the water supply hose to the T-valve. Insert the packing in the T-valve.

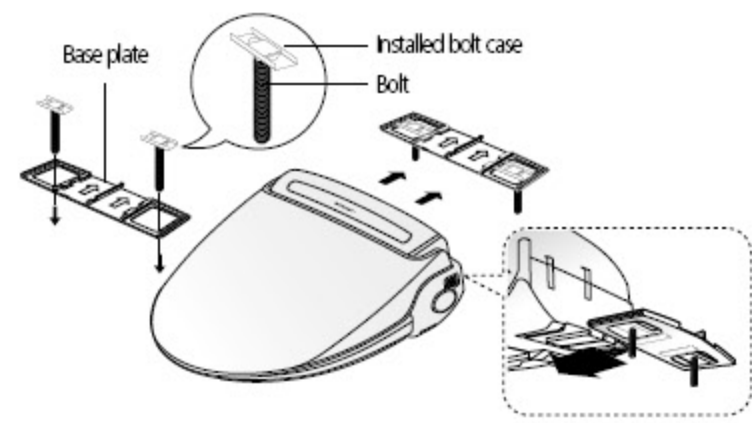


**4** Connect the water supply hose to the assembled T-valve.

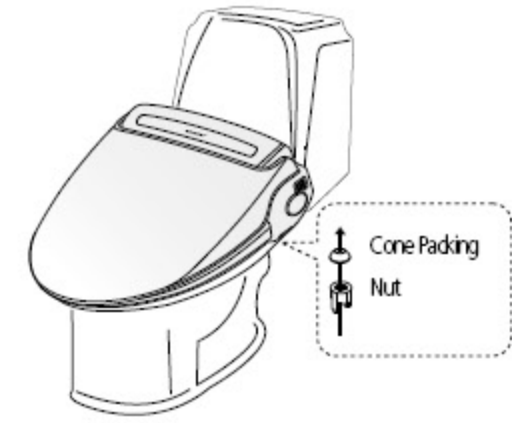


- ※ If the water supply valve opening is 1/2 inch please use a conversion nut to connect it with the T-valve.
- ※ T-valve packing must be used to prevent water from leaking.

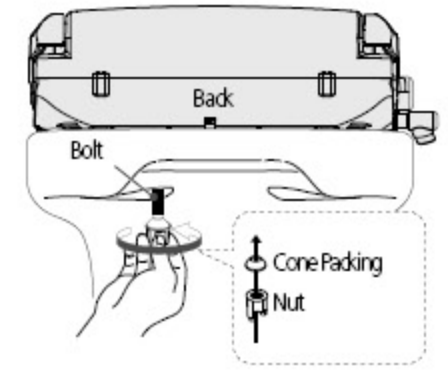
**5** Put the bolt into the bolt case and align it with the top of the base plate. Insert bolt with bolt case onto the base plate. After this is done hold the bolts, slide it into the bottom of the unit until it snaps in place.



**6** Install the main unit and insert the mounting bolts to the toilet mounting holes.



**7** Once the base plate is attached to the unit, align the unit and toilet fixture facing front, and then insert the mounting bolts to the toilet mounting holes.



**8** Connect the flexible tube from side of T-valve to the unit. Turn the water valve to the left to allow water to flow.

