

NITTERHOUSE

MASONRY PRODUCTS, LLC

HARDSCAPES

CATALOG



OUR HISTORY

NITTERHOUSE THROUGH THE YEARS

1923 *In March, William L. Nitterhouse manufactured the first concrete block for his new company.*

2018



William L. Nitterhouse, Founder of Nitterhouse Concrete Products; pictured with one of his sons, Jimmy.



The original block plant located on Lortz Avenue in Chambersburg, PA. William L. Nitterhouse originally produced block in his garage. He expanded as the company grew until later when an actual plant to produce block was built down the street.



T.K. Nitterhouse, 2nd generation (seated) and William K. Nitterhouse, 3rd generation. This photograph was taken for an article in a local newspaper. William K. Nitterhouse began running one of the block plants at age 19 and continued to build the company into what it is today.



William K. Nitterhouse is photographed here for an ad in Life Magazine for an insurance company. He is standing beside a hollow core plank – one of the main products that we still produce today.



From Left to Right: William K. Nitterhouse (3rd Generation), Laura Diller (5th Generation), Karen Nitterhouse Diller (4th Generation), Barry Diller (4th Generation), & Matthew Diller (5th Generation).

CONTENTS

HARDSCAPES

Nitterhouse takes pride through every step of our manufacturing process to ensure that every customer receives superior quality products. We want our products to bring lasting enjoyment to your projects for years and years to come. Explore all of your beautiful product options throughout the following pages.

BE INSPIRED. CREATE. YOUR PROJECT AWAITS.

01 HISTORY

01 Nitterhouse | Our Story

04 RETAINING WALLS

06 Allan Block | Europa Collection
08 Allan Block | Aztec Collection
10 Allan Block | Classic I Sq. Ft. Collection
12 Allan Block | Classic II Collection
14 Allan Block | Courtyard Collection

16 Allan Block | Retaining Wall Accessories
18 Allan Block | Fence Collection
20 Nitterhouse | Village Garden Wall Collection
22 Nitterhouse | Terrace Stone Collection

22 PAVERS

26 Slate | Paving Stone Collection
30 Chateau | Paving Stone Collection
32 Village | Paving Stone Collection
36 Interlocking | Paving Stone Collection
40 Superior | Paving Stone Collection
42 AquaPave | Collection
44 Turfstone | Collection

46 VIP | Paver Collection
47 Paving Stone Accessories
48 London Stone Step Kit | Collection
50 Steps & Caps | Collection
54 Natural Stone | Collection
55 Natural Stepping Stone | Collection
56 Porcelain Tile | Collection

48 SPECIALTY PRODUCTS

60 Fire Pits
62 Edging Stone
63 Landscaping Stone
64 Superior Steps & Splash Block

66 Concrete Fence Posts
67 Superior Curb
68 Parking Blocks

RETAINING WALLS COLLECTION

Nitterhouse and Allan Block Collections give you a choice of styles to meet your site and design requirements. Use the basic gravity wall system for smaller wall projects. For larger scale walls, contact your Nitterhouse representative for advice on reinforcement.



WALLS



COMMERCIAL



PATIO



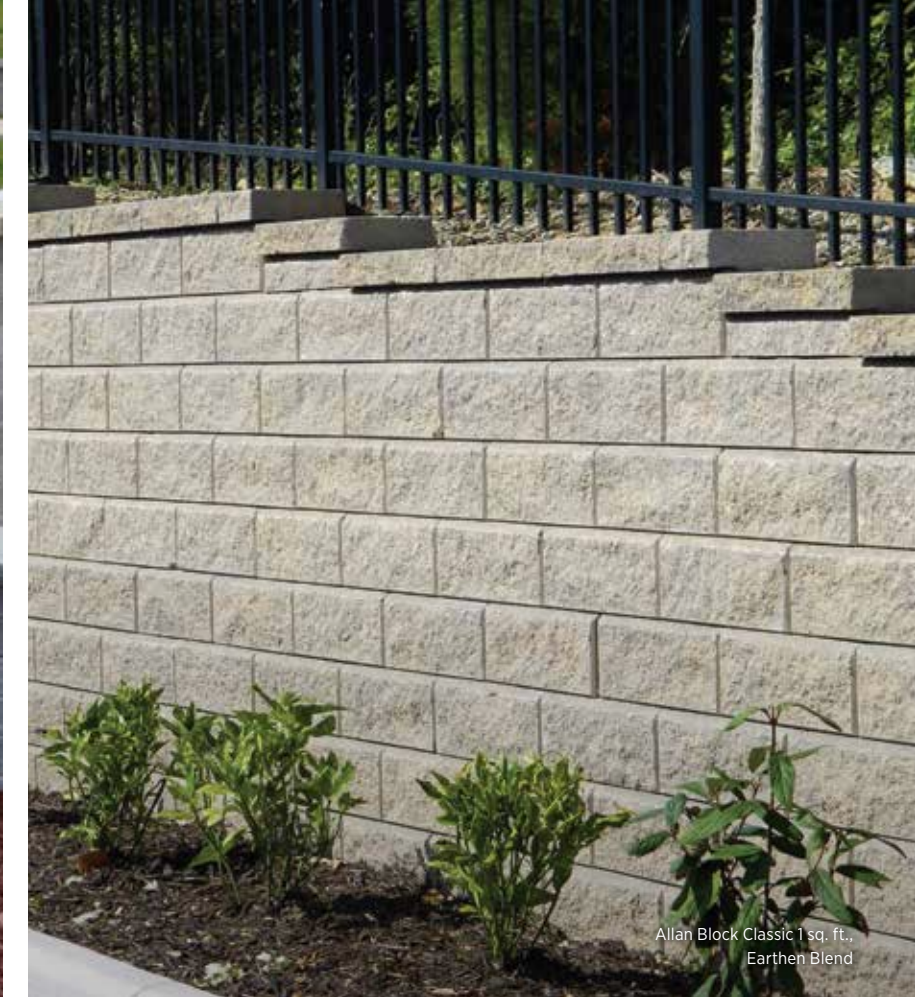
POOLS



GARDEN



Village Garden Wall, Charcoal



Allan Block Classic 1 sq. ft.,
Earthen Blend



Allan Block Europa



Allan Block Courtyard Corners,
Limestone Blend & Chatham Flat Caps



White Oak

EUROPA COLLECTION

ALLAN BLOCK RETAINING WALLS

The Allan Block Europa Collection offers the look and feel of weathered stone with Old World European charm. If your design calls for an elegant and ageless look, Allan Block Europa is the right choice. The Europa Collection retaining wall block styles can be used individually or blended together in an Allan Block Abbey Blend patterned wall.

USES: Commercial & Residential Retaining Walls



PRODUCT	COLLECTION	H x W x D	SQ. FT.	WEIGHT	UNITS/PALLET
AB Abbey Blend	Europa	—	—	—	—
AB Dover	Europa	7 1/4" x 17 5/8" x 10 1/2"	.90 sq. ft.	83lbs	40
AB Palermo	Europa	7 1/4" x 8 3/4" x 10 1/2"	.45 sq. ft.	41lbs	80
AB Barcelona	Europa	3 5/8" x 17 5/8" x 10 1/2"	.45 sq. ft.	46lbs	64
AB Bordeaux	Europa	3 5/8" x 8 3/4" x 10 1/2"	.225 sq. ft.	22lbs	128
AB Europa Corner	Europa	7 1/4" x 15 3/4" x 8"	.79 sq. ft.	50lbs	75
AB 1/2 High Europa Corner	Europa	3 5/8" x 15 3/4" x 8"	.39 sq. ft.	24lbs	105
AB Europa Wall Cap	Europa	4" x 18" x 11 1/4"	.50 sq. ft.	62lbs	56



Abbey Blend
Pattern Blocks



Europa
Right Corner



Europa
Cap



Barcelona
Block



Bordeaux
Block



Dover
Block



Palermo
Block



White Oak



Earthen Blend



* Birch Blend



* Emerson Blend



Limestone Blend



* Rustic Blend



Sandstone Blend

* SPECIAL ORDER



Limestone Blend



Sandstone Blend



AZTEC COLLECTION

ALLAN BLOCK RETAINING WALLS

The newest product for Allan Block, the Aztec Collection inspired from the beautiful ancient walls in Cusco, Peru. This new style of block will offer a fresh, versatile look to your project. Not only will Aztec give you a unique looking retaining wall but they also use the same installation and engineering calculations as other Allan Block collections.

USES: Commercial & Residential Retaining Walls



PRODUCT	H x W x D	SQ. FT.	WEIGHT	UNITS/PALLET
AB Aztec Classic	7 1/4" x 17 5/8" x 10 1/2"	.90 sq. ft.	71lbs	40
AB Aztec Junior	7 1/4" x 8 1/2" x 10 1/2"	.45 sq. ft.	32lbs	80
AB Aztec Lite Stone	3 5/8" x 17 5/8" x 10 1/2"	.45 sq. ft.	40lbs	64
AB Aztec Junior Lite	3 5/8" x 8 3/4" x 10 1/2"	.22 sq. ft.	16lbs	128
AB Aztec Caps	4" x 18" x 11 3/4"	.50 sq. ft.	64lbs	56
AB Aztec Corners	7 1/4" x 15 3/4" x 8"	.79 sq. ft.	49lbs	45



Limestone Blend



AB Aztec Classic



AB Aztec Junior



AB Aztec Lite Stone



Sandstone Blend



AB Aztec Junior Lite



AB Aztec Caps



AB Aztec Corners



Limestone Blend



Limestone Blend

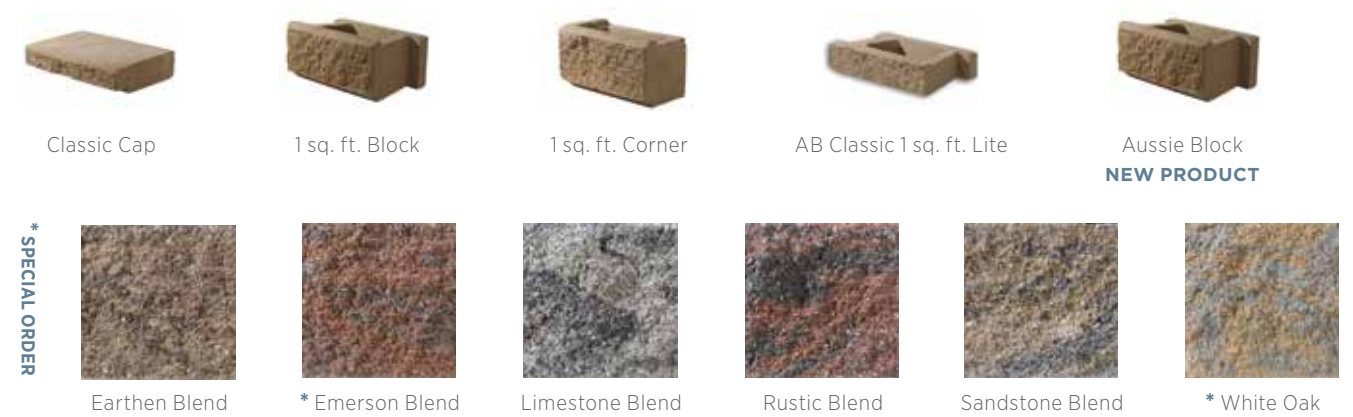
AB CLASSIC

1 SQ FT COLLECTION

ALLAN BLOCK RETAINING WALLS

The Allan Block Classic Collection, Allan Block's most popular line of retaining wall products, brings timeless beauty and sophistication to any landscape project. The clean lines of the Allan Block Classic Collection work equally well with basic and complex projects. With a variety of shapes, textures, and colors, this collection offers everything you need to easily create truly impressive hardscape walls.

USES: Commercial & Residential Retaining Walls



PRODUCT	COLLECTION	H x W x D	SQ. FT.	WEIGHT	UNITS/PALLET
AB Classic 1 sq. ft.	Classic	8" x 18" x 11 1/4"	1 sq. ft.	76.5lbs	48
AB Classic 1 sq. ft. Corner	Classic	8" x 15 5/8" x 7 13/16"	.85 sq. ft.	59lbs	45
AB Classic Cap	Classic	4" x 12" x 11 3/4"	.33 sq. ft.	46lbs	84
AB Classic 1 sq. ft. Lite	Classic	4" x 18" x 11 1/4"	.50 sq. ft.	38lbs	64
AB Aussie	Classic	8" x 18" x 9"	1 sq. ft.	70lbs	40



Limestone Blend



Emerson Blend



Earthen Blend

AB CLASSIC II COLLECTION

ALLAN BLOCK RETAINING WALLS

Allan Block Classic II can be used alone to create a uniform classic looking retaining wall and it can also be used along with other Allan Block Classic II styles to create a beautiful Ashlar Blend patterned wall.



USES: Commercial & Residential Retaining Walls

PRODUCT	COLLECTION	H x W x D	SQ. FT.	WEIGHT	UNITS/PALLET
AB Classic II	Ashlar Blend	7 1/4" x 17 5/8" x 10 1/2"	.90 sq. ft.	83lbs	40
AB Jumbo Junior	Ashlar Blend	7 1/4" x 8 1/2" x 10 1/2"	.45 sq. ft.	41lbs	80
AB Classic II Lite Stones	Ashlar Blend	3 5/8" x 17 5/8" x 10 1/2"	.45 sq. ft.	46lbs	64
AB Junior Lite	Ashlar Blend	3 5/8" x 8 3/4" x 10 1/2"	.22 sq. ft.	22lbs	128
AB Corner Block	Ashlar Blend	7 1/4" x 15 3/4" x 8"	.79 sq. ft.	50lbs	75
AB 1/2 High Classic II Corner	Ashlar Blend	3 5/8" x 15 3/4" x 8"	.39 sq. ft.	24lbs	105
AB Classic II Cap	Ashlar Blend	4" x 18" x 11 3/4"	.50 sq. ft.	62lbs	56



AB Classic II Junior Lite



AB Classic II Jumbo Junior



AB Classic II



AB Classic II Lite



AB Classic II Corner



AB Classic II Ashlar Pattern



AB Classic II Cap

*SPECIAL ORDER



Earthen Blend



*Birch Blend



White Oak



*Emerson Blend



Limestone Blend



*Rustic Blend



Sandstone Blend



Limestone Blend



White Oak



Earthen Blend

COURTYARD COLLECTION

ALLAN BLOCK RETAINING WALLS

The Allan Block Courtyard Collection offers landscape professionals all the ease and convenience of an Allan Block product combined with an aged, Old World appearance. It is a two-sided free standing patio wall system that has multiple block pieces. Bring your designs to life with serpentine curves, straight walls and decorative posts – all with one simple system that requires no footings, reinforcement or special tools. Also available in a tumbled Old Country style to give a more rustic look.

USES: *Patio Enclosures, Entry Monuments, Light Posts, Seating Walls, Planters, & Landscape Accents*



PRODUCT	COLLECTION	H x W x D	SQ. FT.	WEIGHT	UNITS/PALLET
AB Dublin	Courtyard	6" x 16 1/2" x 7"	.69 sq. ft.	39lbs	72
AB York	Courtyard	6" x 9" x 7"	.37 sq. ft.	20lbs	120
AB Courtyard Corner	Courtyard	6" x 15" x 7"	.63 sq. ft.	42lbs	75
AB Courtyard Wall Cap	Courtyard	3 1/2" x 9 1/2" x 10"	.23 sq. ft.	22lbs	80
AB Courtyard Post Cap	Courtyard	3" x 26" x 26"	4 sq. ft.	144lbs	6
AB Old Country Dublin	Courtyard	6" x 16 1/2" x 7"	.69 sq. ft.	39lbs	72
AB Old Country York	Courtyard	6" x 9" x 7"	.37 sq. ft.	20lbs	120
AB Old Country Corner	Courtyard	6" x 15" x 7"	.63 sq. ft.	42lbs	75
AB Old Country Wall Cap	Courtyard	3 1/2" x 9 1/2" x 10"	.23 sq. ft.	22lbs	80



White Oak



Sandstone Blend



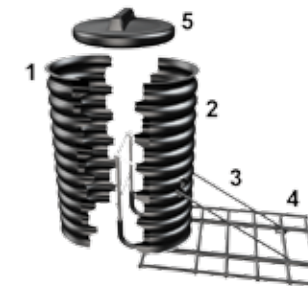
Sandstone Blend



RETAINING WALL ACCESSORIES COLLECTION

ALLAN BLOCK RETAINING WALLS

NOTE: We offer many products & brands of retaining wall accessories, contact your Nitterhouse Rep for more info



THE SLEEVE-IT® SYSTEM is a patented, code compliant, fence-post anchoring system that integrates stable fence footings into the support structure of walls while the retaining wall is being constructed. This unique fence system is pre-engineered and pre-designed so that the useable real estate at the top of a retaining wall is not wasted.

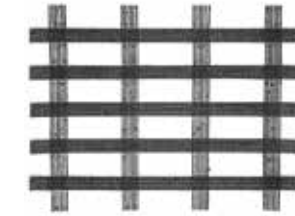


UNIVERSAL GEOGRID is a bi-directional geogrid for wall heights up to 6 feet. It may be installed either perpendicular or parallel to the wall.

NOTE: 4' wide x 100' long



SLOTTED DRAINAGE PIPE & FITTINGS:
4'x100', 4'x 10'



STRATAGRID® is a high performance soil reinforcement product. It is made with polyester yarns that have a high molecular weight and extraordinary tensile strength.

NOTE: 6' wide x 300' long



WALL DRAIN PRO is a simple modern and effective wall drain system. Easy to install and aesthetically pleasing.

COLORS: Grey, Black, & Tan



ADHESIVE: Gator Bond & PL Premium



Emerson Blend

FENCE COLLECTION

ALLAN BLOCK RETAINING WALLS

The Allan Block Fence has two main components of post blocks and panel blocks and also includes wall and column caps. Allan Block Fence System is a mortar-less, two-sided fence system that provides excellent privacy, protection, and sound reduction.

USES: Commercial & Residential Retaining Walls & Pools

NOTES: Other Colors Available Upon Request



PRODUCT	H x W x D
AB Fence Post Block	7" x 12" x 18"
AB Fence Panel Block	7" x 6" x 18"
AB Fence Lite Panel Block	4" x 6" x 18"
AB Fence Half Panel Block	7" x 6" x 9"
AB Fence Half Lite Panel Block	4" x 6" x 9"
AB Fence Corner Block	7" x 12" x 12"
AB Fence Cap Block	5" x 12" x 18"
AB Large Fence Post Block	7" x 20" x 18"

PRODUCT	WEIGHT
AB Panel Block	47lbs, 72/pallet
AB 1/2 Panel Block	27lbs, 144/pallet
Post Block	70lbs, 48/pallet
Post Corner Block	55lbs, 48/pallet
Cap Block	71lbs, 56/pallet



* Earthen Blend



* Limestone Blend

* SPECIAL ORDER



1/2 Panel Block



Fence Cap Block



Fence Corner Block



Fence Lite Panel Block



Fence Panel Block



Fence Post Block



Limestone Blend



Charcoal with Earthen Band

VILLAGE GARDEN WALL COLLECTION

This Collection has a rustic tumbled finish on all sides, making it an excellent option for two-sided walls. Our Village Garden Wall is manufactured in 3 aesthetically pleasing colors which complement our Village Paving Stones. This is a one piece system that measures 4" x 8" x 16" and can be successfully used both vertically and horizontally to yield beautiful patterns. Village Garden Wall can also be used to create a beautiful square fire pit to complement your Village Garden Wall or add a nice addition to any project.

USES: Gardens, Patios, Pools, Light Posts, & Grill Enclosures



H x W x D	WEIGHT	UNITS/PALLET
3 5/8" x 7 5/8" x 15 5/8"	34lbs each	120



Pewter



Charcoal



Earthen Blend



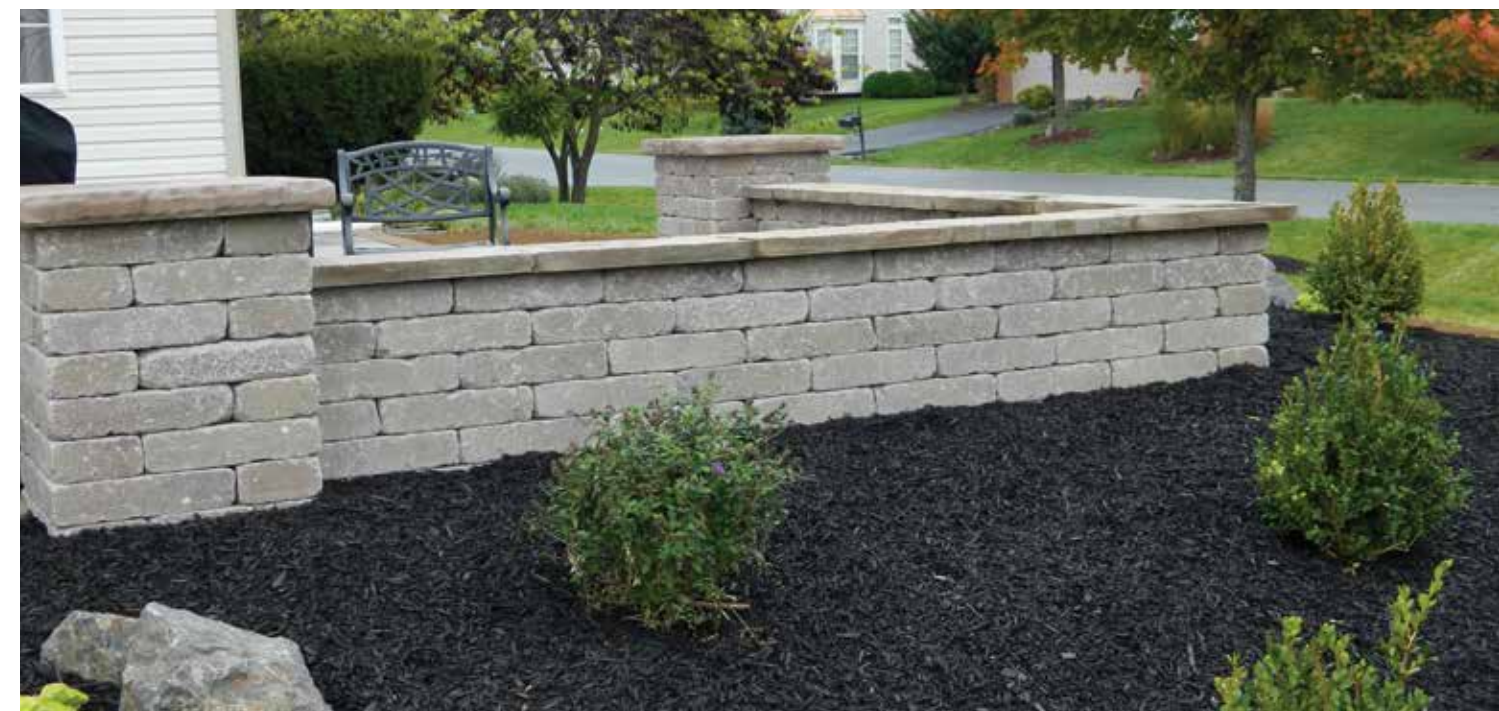
Sandstone Blend



Charcoal with Earthen Band



Sandstone with Charcoal Band



Earthen Blend



Limestone Blend

TERRACE STONE COLLECTION

Create warm, beautiful walls with the Nitterhouse Terrace Stone Collection. At 30lbs per unit, it's easy to build just about any type of garden wall, including inside and outside curves. Each stone is produced in proportional dimensions. Terrace Stone is designed for walls up to 2 ft. (6 courses) high.

USES: Accent Walls, Garden Walls, Driveways, Flowerbeds, & Walkways

NOTES: All Purchases Will Include 75% Tapered & 25% Square End Pieces



Earthen Blend



Limestone Blend



Sandstone Blend



Rustic Blend



4"H x 8"D x 12"L
30lbs each
120 per pallet



Square



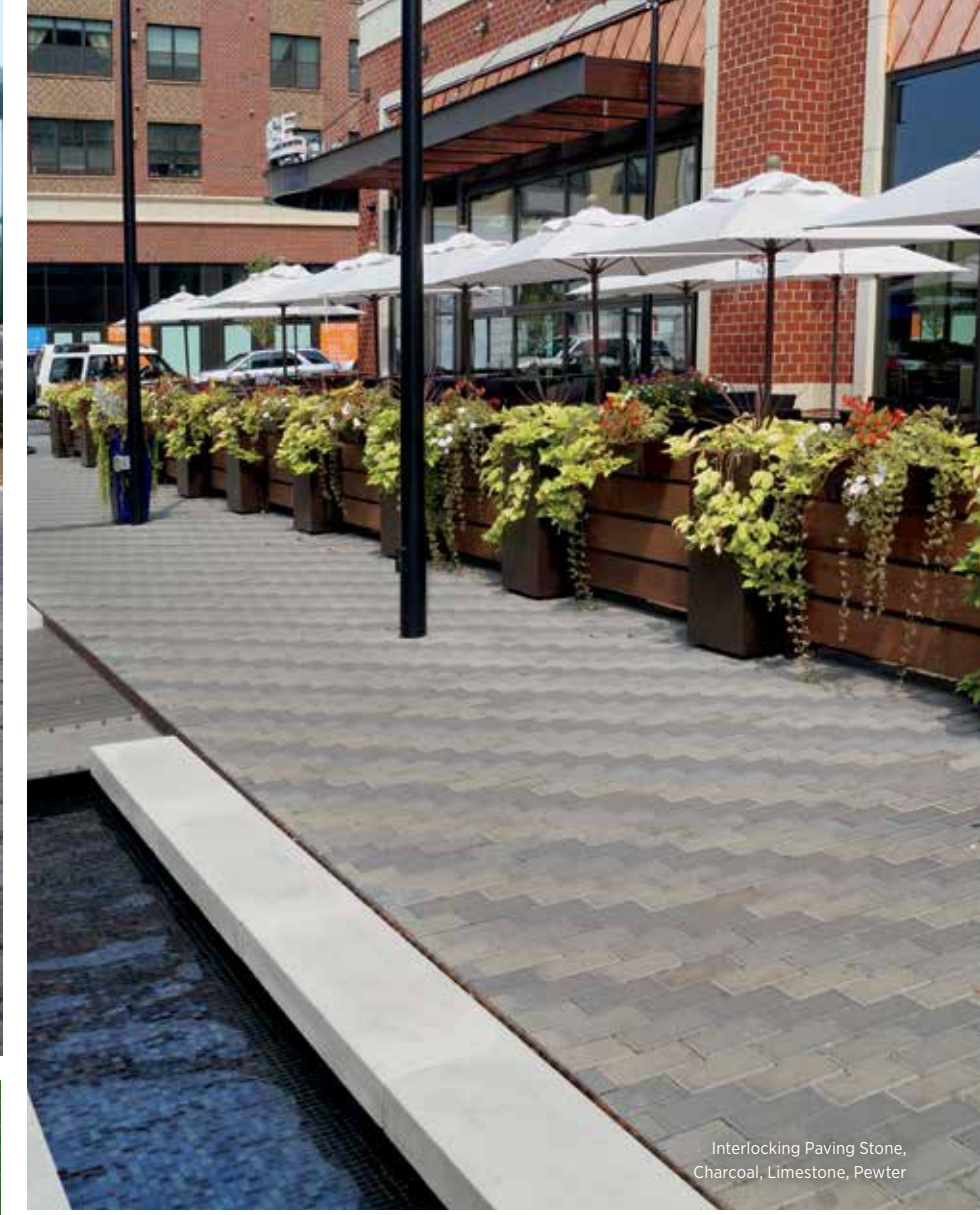
Rustic Blend

PAVERS COLLECTION

Nitterhouse manufactures pavers in a variety of sizes, colors, and styles that will be sure to meet your project's needs. Our pavers have the ability to set the stage for any residential or commercial application.



Village Pavers, Charcoal



Interlocking Paving Stone, Charcoal, Limestone, Pewter



Chateau Pavers, Sandstone Blend



Slate Pavers



SLATE PAVING STONE COLLECTION

PAVERS

Get the look and texture of real slate and the added strength of concrete with our machine pressed slate pavers. They are great for both residential and commercial projects. All colors come in a natural finish. Sealing will enhance the color of the product. All sizes feature square edges, straight sides and consistent thickness.

USES: Pools, Patios, Walkways, Garden Paths, & Commercial Patios





SLATE PAVING STONE COLLECTION

H x W x D	WEIGHT	UNITS/PALLET
12" x 12" x 2"	24lbs	80
12" x 24" x 2"	48lbs	40
18" x 18" x 2"	54lbs	40
18" x 24" x 2"	72lbs	20
24" x 24" x 2"	96lbs	20
24" x 36" x 2"	145lbs	20

USES: Pools, Patios, Walkways, Garden Paths, & Commercial Patios



SAMPLE SLATE PAVING STONE LAYOUT

Visit our website for an interactive slate paver layout:
nitterhousemasonry.com/products/slate-pavers



Mountain Green



Appalachian Gray

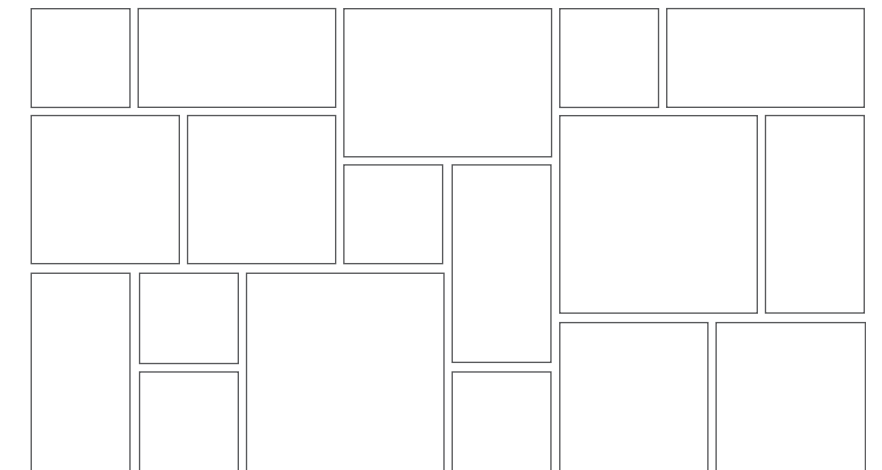
* SPECIAL ORDER



Sierra Tan



* Canyon Red





Sandstone Blend

CHATEAU PAVING STONE COLLECTION

PAVERS

The new paver collection produced by Nitterhouse is a unique three piece paver style that provides a versatile look and pattern. Our Chateau pavers will give you the look and feel of living in an authentic old world setting.

USES: Pools, Patio, Walk Ways, Gardens, & Commercial



SIZES
6" x 12"
12" x 12"
12" x 18"

NOTE: All sizes are combined per layer

SOLD BY THE LAYER: 11.202 sq. ft. per layer, 10 layers/ 112.02 sq. ft. per pallet



Earthen Blend



Sandstone Blend



Limestone Blend



Rustic Blend



Sandstone Blend



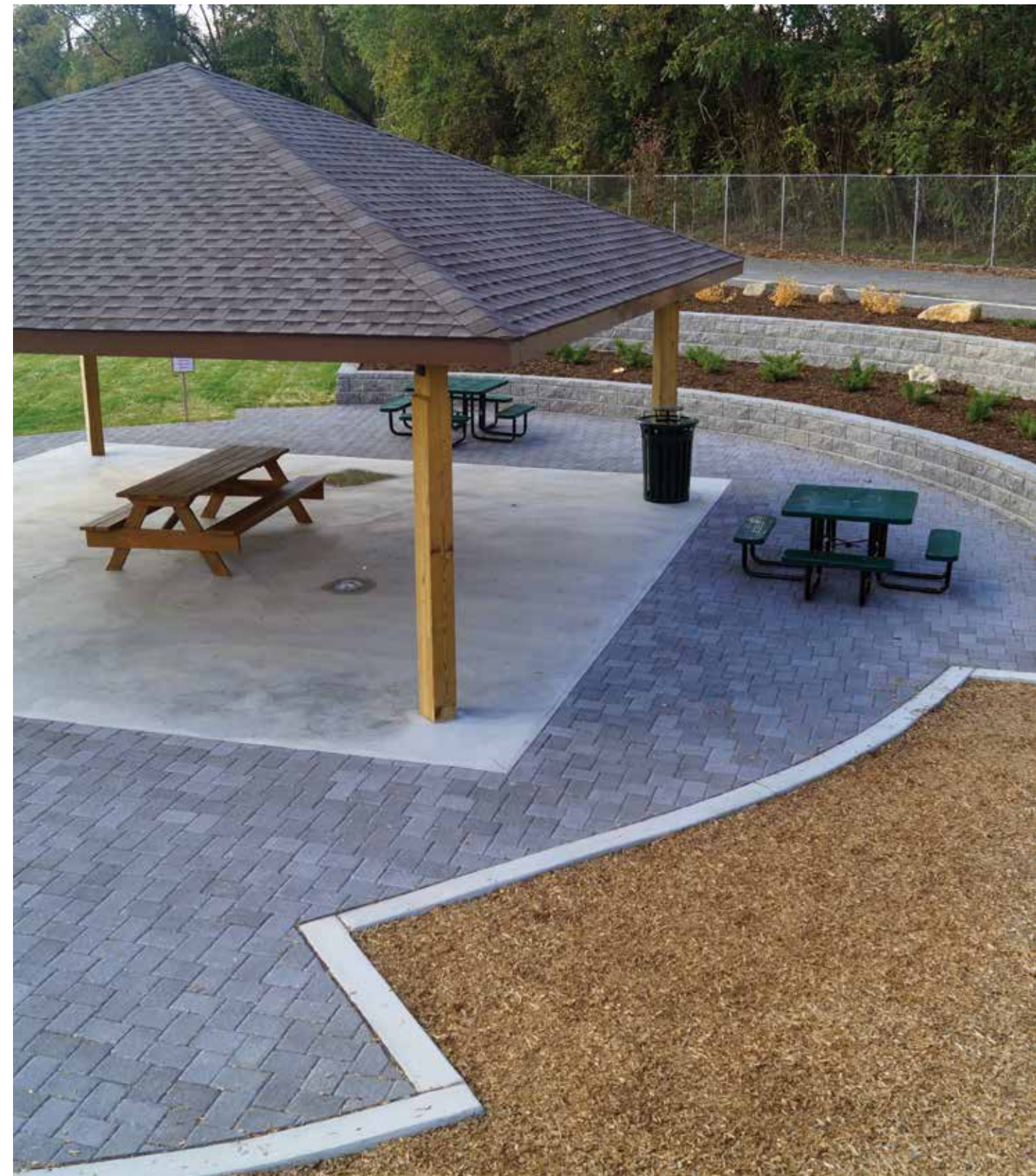
Earthen Blend

VILLAGE PAVING STONE COLLECTION

PAVERS

Village Tumbled Pavers offer the look and feel of cobblestone without the cost. These authentic-looking interlocking stones will add natural beauty, durability, and lots of warmth and distinction to all types of landscape designs. The rich, natural colors also complement several of our other tumbled products. Village Tumbled Pavers are perfect for driveways, patios, walkways, garden paths, and courtyards.

USES: Pools, Patios, Walkways, Garden Paths, & Commercial Patios



Charcoal



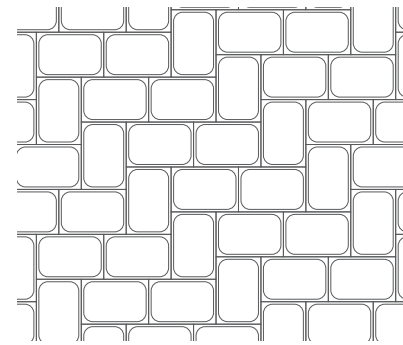
Earthen Blend

VILLAGE PAVING STONE

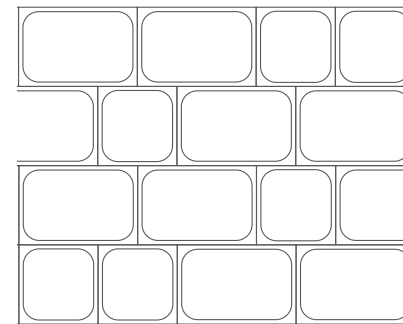
COLORS & PATTERNS

H x W x D	WEIGHT	APPROX COVERAGE	UNITS/PALLET
4" x 8" x 2 3/8"	27lbs	4.5 pavers/sq. ft.	106 sq. ft.
8" x 8" x 2 3/8" <i>(Special Order)</i>	27lbs	2.25 pavers/sq. ft.	106 sq. ft.
6" x 6" x 2 3/8"	27lbs	4 pavers/sq. ft.	115 sq. ft.
6" x 9" x 2 3/8"	27lbs	2.67 pavers/sq. ft.	115 sq. ft.

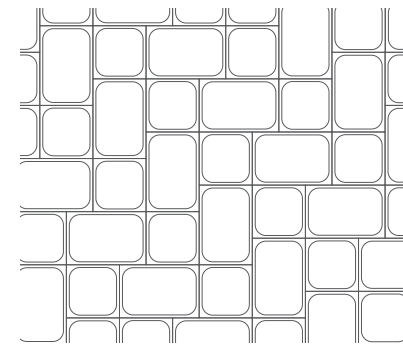
USES: Pools, Patios, Walkways, Garden Paths, & Commercial Patios



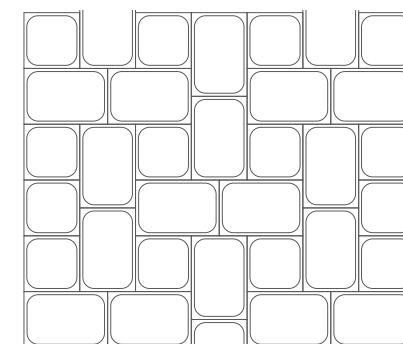
90° Herringbone



Running Bond



Modified Herringbone



I-Pattern



* Aztec Blend



* Camden



Charcoal

* SPECIAL ORDER



Pewter



Rustic Blend



* Salmon Blend



Earthen Blend



* Emerson Blend



Limestone Blend



Tan



Sandstone Blend



Emerson Blend



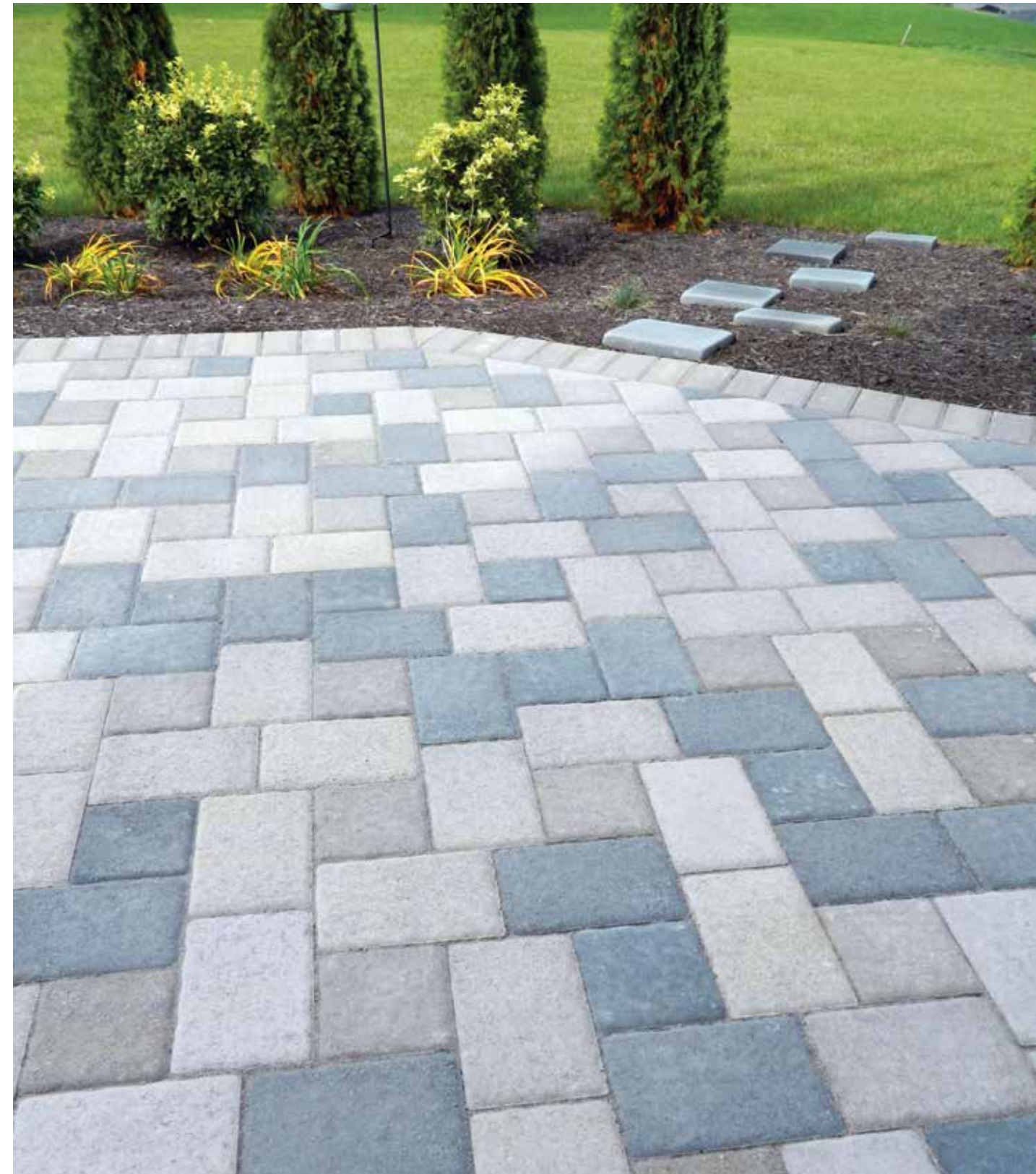
Rustic Blend

INTERLOCKING PAVING STONE COLLECTION

PAVERS

Practical, versatile and affordable, Interlocking Paving Stones add beauty and value. They provide a tough, long lasting surface for all types of residential or commercial applications. Quickly and easily create colorful, attractive, unique and durable settings.

USES: Pools, Patios, Walkways, Garden Paths, & Commercial Patios



Earthen Blend & Charcoal



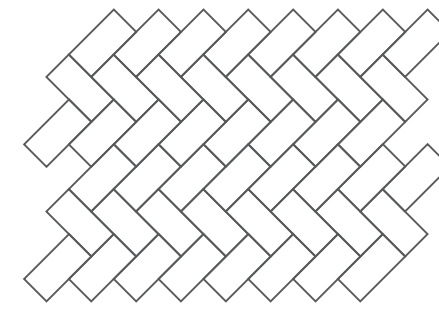
Sandstone blend

INTERLOCKING PAVING STONE

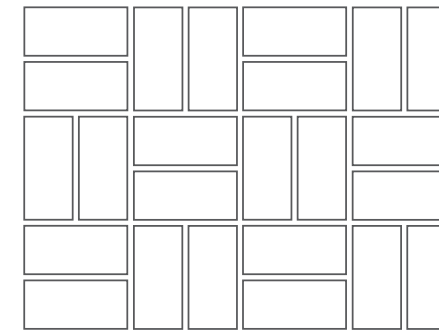
COLORS & PATTERNS

H x W x D	WEIGHT	APPROX COVERAGE	UNITS/PALLET
4" x 8" x 2 3/8"	27lbs	4.5 pavers/sq. ft.	106 sq. ft.
8" x 8" x 2 3/8" <i>(Special Order)</i>	27lbs	2.25 pavers/sq. ft.	106 sq. ft.
6" x 6" x 2 3/8"	27lbs	4 pavers/sq. ft.	115 sq. ft.
6" x 9" x 2 3/8"	27lbs	2.67 pavers/sq. ft.	115 sq. ft.

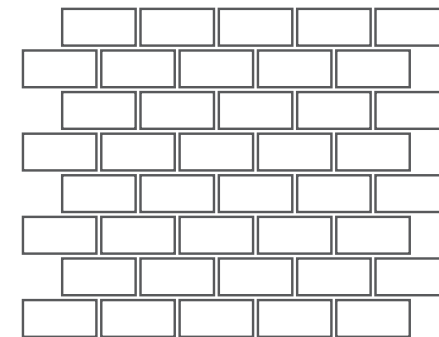
USES: Pools, Patios, Walkways, Garden Paths, & Commercial Patios



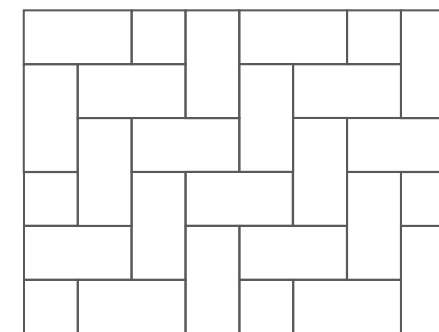
45° Herringbone



Basketweave



Running Bond



90° Herringbone



* Aztec



* Camden



Charcoal

* SPECIAL ORDER



Pewter



Rustic Blend



* Salmon Blend



Earthen Blend



* Emerson Blend



Limestone Blend



Tan



Sandstone Blend



Emerson Blend



SUPERIOR PAVING STONE COLLECTION

PAVERS

Superior Pavers can be used in a wide variety of applications while being very economical and durable. Unlimited designs can be created by combining sizes, colors, and textures. With Superior Pavers, it's simple to add a touch of elegance to ordinary sidewalks and patios.

USES: Sidewalks, Patios, Pools, Gardens, & Roof Ballast



*Brick Face Pewter
(only comes in 18" x 18")



Matte Pewter



Matte Tan



*Brick Face Red
(only comes in 18" x 18")



Matte Charcoal



Matte Red

* SPECIAL ORDER

H x W x D	WEIGHT	UNITS/PALLET
12" x 12" x 2"	23lbs	160
12" x 24" x 2"	51lbs	48
18" x 18" x 2"	90lbs	40





AquaPave Paving Stone, Red & Charcoal

AQUAPAVE COLLECTION

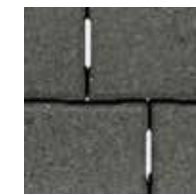
PAVERS

The AquaPave Permeable Paving System allows rain to infiltrate a permeable concrete paving stone surface into an aggregate base before being released into storm sewers or watercourses. A key component is the use of Inbitex®, a patented geotextile fabric that removes 99.9% of oil and hydrocarbons, and up to 97% of heavy metals from storm water through microbial action. AquaPave is pedestrian and disability friendly and ADA compliant.



NOTE: AquaPave Manufactured to Order & Sold in Full Pallets Only

USES: Driveways, Sidewalks, Patios, Pools, Commercial Applications, Gardens, & Plazas



* Charcoal



* Earthen Blend



* Emerson Blend



* Red

* SPECIAL ORDER



* Salmon



* Limestone Blend



* Sandstone Blend



* Pewter



* Rustic Blend

PRODUCT	H x W x D	WEIGHT	UNITS/PALLET
AquaPave Paving Stone	4" x 8" x 3 1/8"	36lbs per sq. ft.	106.7 sq. ft. per pallet
AquaSlab	18" x 18" x 2"	51lbs each	48 slabs per pallet



AquaPave Paving Stone, Red



TURFSTONE

COLLECTION

PAVERS

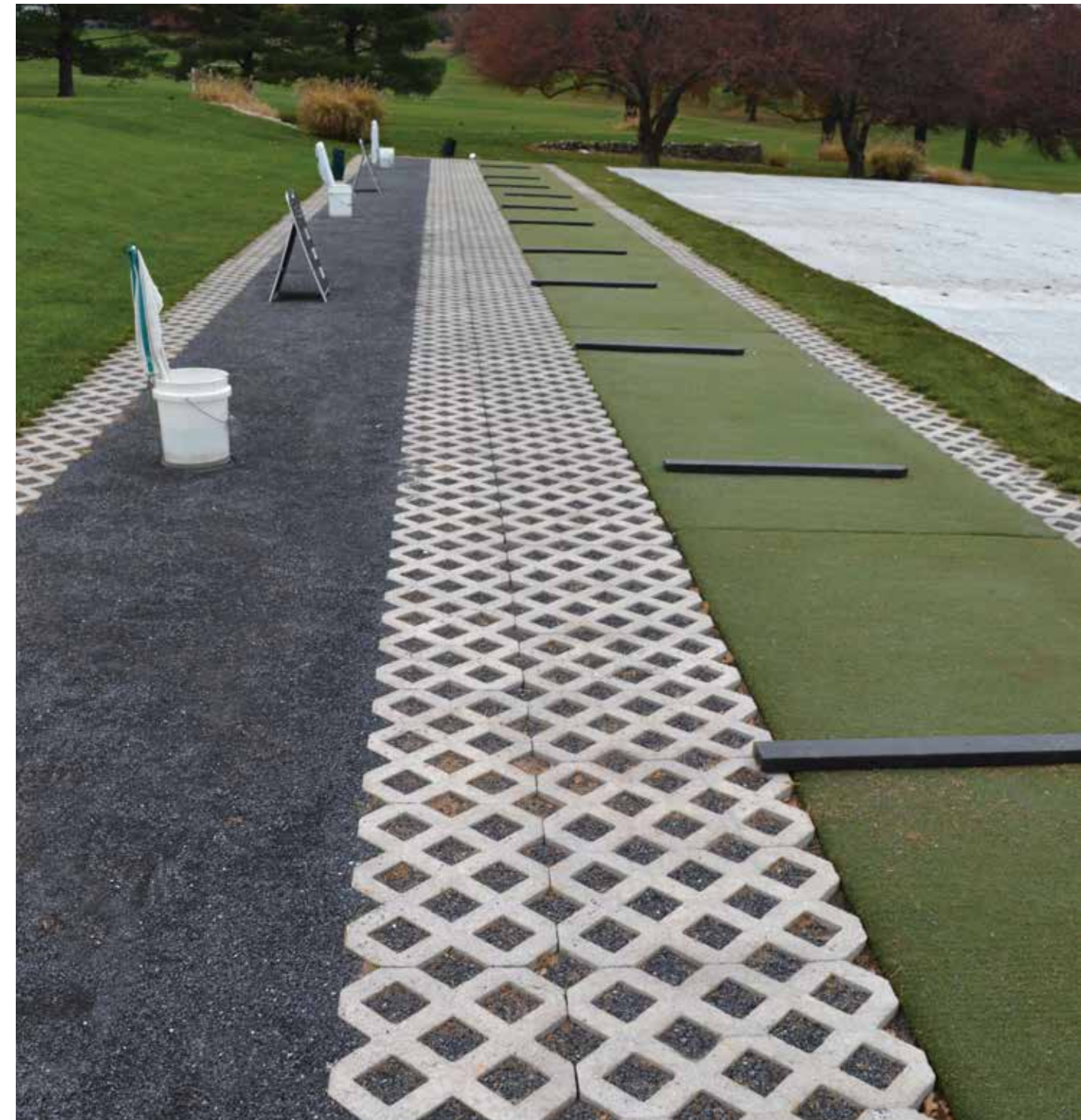
Turfstone is a permeable paver produced with 5,000 psi concrete in a grid like design with voids. The openings can be filled with a variety of substances. Provides a firm “breathable” foundation, requires very little maintenance, combats soil erosion, an affordable alternative to traditional paving, and allows water to penetrate into the soil.

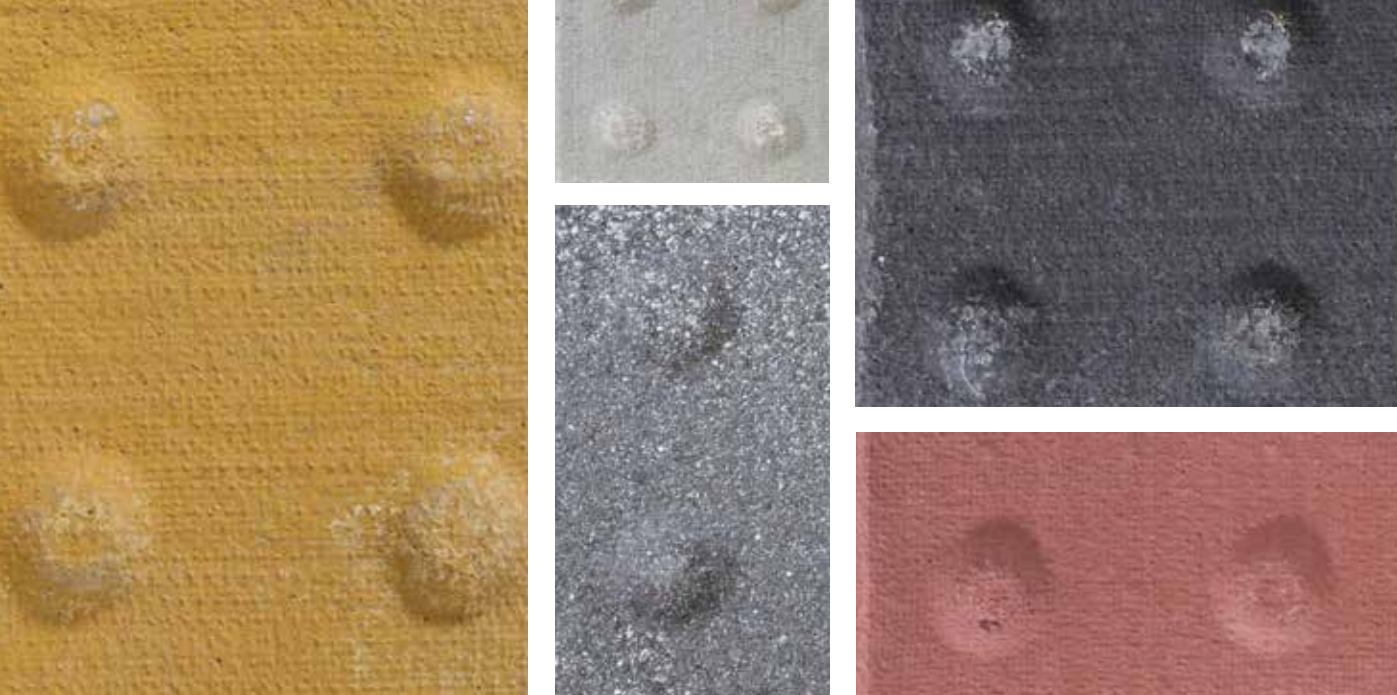
USES: Driveways, Parking Areas, Walkways, Paths, & Driving Ranges

COLOR: Pewter



H x W x D	WEIGHT	UNITS/PALLET
15 3/4" x 23 5/8" x 3 1/8"	60lbs each	32 per pallet





VIP PAVERS COLLECTION

The top surface of each VIP Paver has raised truncated domes to create a distinctive textured surface. This helps alert those with limited vision to a change in their path of travel, such as curbs, street crossings, etc. Produced in 4 standard colors each with two finishes, VIP Pavers can also be made in custom colors.

				H x W x D	WEIGHT
				12" x 12" x 2"	24lbs each
PG 4 Matte	PG 7 Matte	PG 8 Matte	PG 65 Matte	24" x 24" x 2"	96lbs each
					
PG 4 Antique	PG 7 Antique	PG 8 Antique	PG 65 Antique		

USES: Crosswalks, Steps, Transitions, & Commercial Plazas

ANTIQUÉ COLORS: Available upon request



PAVING STONE ACCESSORIES

Nitterhouse stocks a wide variety of sealers, cleaners, and restraints and Polymeric sands to help complete any project. We also have a knowledgeable staff to direct you to just the product you need for your project. The products listed are just a sampling of the Alliance Products we carry. We also offer other brands and products. *Please call 717-267-4500 for more information.*

- Gator Supersand Bond
- Gator Resealer
- Gator Base
- Gator Maxx Sand
- Gator Block Bond
- Gator Efflorescence
- Gator Dust
- Gator Clean
- Paver Edging
- Gator Seal
- Gator Shampoo





Charcoal

LONDON STONE STEP KIT COLLECTION

This step kit makes it easy to fit and customize to any project. Select from two steps up to five steps and two different widths. The London steps are finished with beautiful chiseled edges that give an natural look and feel.

USES: Patios, Pools, Walkways, Gardens, Entrances, Courtyards, & Commercial



- Step Depth 16"
- Side Riser Length 14"
- Side Riser Length 28"
- Side Riser Length 42"
- Side Riser Length 56"

- 2 STEP KIT:** 2 Steps, 2-14" side risers
- 3 STEP KIT:** 3 Steps, 2-14" side risers, 2-28" side risers
- 4 STEP KIT:** 4 Steps, 2-14" side risers, 2-28" side risers, 2-42" side risers
- 5 STEP KIT:** 5 Steps, 2-14" side risers, 2-28" side risers, 2-42" side risers, 2-56" side risers



PRODUCT	H x W x D	WEIGHT
London Stone Step	7.5" x 48" x 16"	300lbs
London Stone Step	7.5" x 78" x 16"	800lbs
Side Riser	7.5" x 14" x 12"	109lbs
Side Riser	7.5" x 28" x 12"	218lbs
Side Riser	7.5" x 42" x 12"	329lbs
Side Riser	7.5" x 56" x 12"	438lbs



Oak Blend



Tan



Charcoal Blend



London Step



Side Riser



Windsor Step, Charcoal

STEPS & CAPS COLLECTION

Our complete line of steps and wall accessories give an Old World feel while remaining durable and maintenance-free. Stable and easy to install, these items come in three naturally beautiful colors sure to complement all projects. Our steps, post and wall caps come in various sizes and styles adding the perfect touch to any residential or commercial application.

USES: Patios, Pools, Walkways, Gardens, Entrances, Courtyards, & Commercial



Oak Blend



Charcoal Blend



Tan



Chatham Flat Cap with Hole, Tan



Chatham Steps, Tan



Chatham Flat Caps, Charcoal



Chatham Flat Cap, Charcoal

STEPS, CAPS & POSTS

COLORS & PRODUCTS

NAME	H x W x D	WEIGHT	OTHER
Oxford Step	48" x 26" x 6"	650lbs	Chiseled Face all sides
Windsor Step	48" x 18" x 6"	450lbs	Textured all 4 sides
Chatham Step	48" x 18" x 6"	450lbs	Chiseled Face & Sides, Back Flat
Chatham Wallcap	12" x 24" x 2 1/2"	58lbs	Flat with chiseled edges & available with only one finished end
Chatham Wallcap	12" x 48" x 2 1/2"	124lbs	Flat with chiseled edges & available with only one finished end
Chatham Post Cap	26" x 26" x 2 1/2"	130lbs	Flat with chiseled edges
Chatham Post Cap	28" x 28" x 2 1/2"	150lbs	Flat with chiseled edges
Chatham Post Cap	30" x 30" x 2 1/2"	170lbs	Flat with chiseled edges
Peaked Caps	26" x 26" x 2 1/2"	140lbs	Peaked with chiseled edges
Peaked Caps	30" x 30" x 2 1/2"	190lbs	Peaked with chiseled edges

*Caps also available with hole



30 x 30 Chatham Flat Cap



26 x 26 Peaked Cap



2ft Chatham Wall Cap With End



2ft Chatham Wall Cap



4ft Chatham Wall Cap With End



4ft Chatham Wall Cap



Chatham Step



Windsor Step



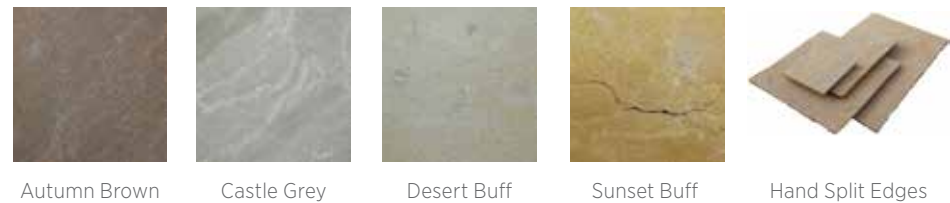
USES: Patios, Pools, Walkways, Gardens, Entrances, Courtyards, & Commercial

NOTES: All Steps & Caps Available in Tan, Charcoal Blend, & Oak Blend

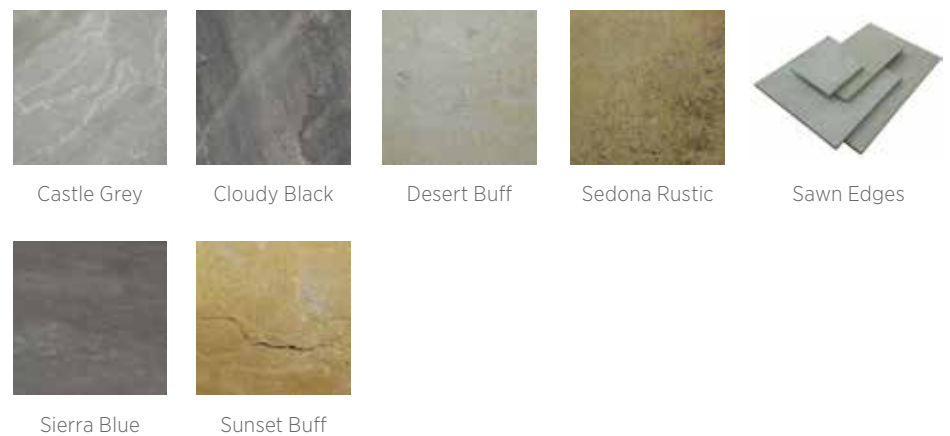
NITTERHOUSE NATURAL STONE COLLECTION

We are proud to carry a high quality line of natural stone paving. Ethically sourced and hand selected for both purity of color and sizing and thickness. Select from sawn edges which offer a modern clean look or hand split edges which express a rustic, aged look.

HAND SPLIT EDGES



SAWN EDGES



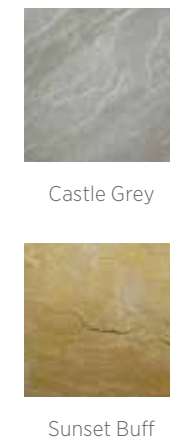
USES: Patios, Pools, Garden, Walkways, & Commercial

DIMENSIONS: 7/8" typical thickness, 12"x 12", 12"x 24", 24"x 24", 24"x 36"



NATURAL STONE STEPPING STONES COLLECTION

A charming way to add a wonderful distinctive feature to any garden, Not only offering a practical solution to help you walk about your garden, they can also add real visual interest. Available in two different colors with a variety of four different shapes.



USES: Pools, Gardens, & Walkways

DIMENSIONS: Natural Surface with hand split edges, Ranging in size from 18"-24" in dia, 1" thick

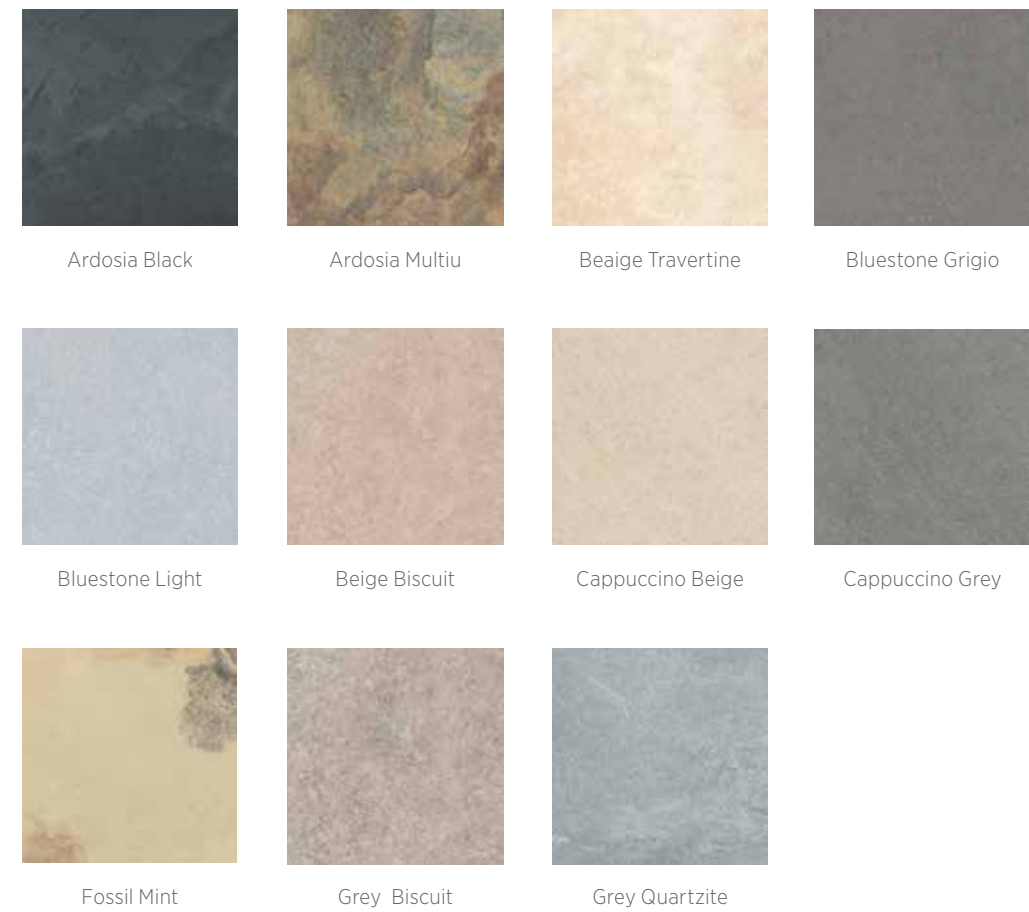




NITTERHOUSE PORCELAIN TILE COLLECTION

This line of natural porcelain tile is not only beautiful but also slip and scratch resistant. It is environmentally friendly & salt, stain, chemical resistant complementary to concrete pavers and retaining walls.

USES: Patios, Pools, Garden, Walkways, & Commercial



Ardosia Black

Ardosia Multiu

Beige Travertine

Bluestone Grigio

Bluestone Light

Beige Biscuit

Cappuccino Beige

Cappuccino Grey

Fossil Mint

Grey Biscuit

Grey Quartzite

SIZE	WEIGHT	UNITS/PALLET
2' x 2'	2,645lbs per pallet	68 pieces per pallet

SPECIALTY PRODUCTS

Nitterhouse manufactures a variety of specialty concrete products that will add value and benefit to any backyard, patio, driveway or poolside. Our unique specialty products are made with superior attention to quality and detail.



COMMERCIAL



DRIVE



PATHS



PATIO



POOLS



GARDEN



Chiseled Fire Pit, Charcoal



Two Hole Fence Post



6 Foot Car Stop



Chiseled Firepit, Charcoal

FIRE PIT COLLECTION

SPECIALTY PRODUCTS

Effortlessly create a wonderful environment for outdoor entertaining with our Chiseled Fire Pit or One Piece Fire Pit. Either choice is perfect for any outdoor setting. The color and texture of each fire pit is carefully crafted to give the appearance of natural stone without the associated labor and cost.

- One Piece Fire Pit
- Chiseled Fire Pit
- Village Garden Square Fire Pit



PRODUCT	DIMENSIONS	WEIGHT	INCLUDES
Chiseled Fire Pit	33" Dia x 10"H	540lbs	8 piece, 4 caps, 1 metal liner
One Piece Fire Pit	37" Dia x 12"H	620lbs	1 piece, 4 caps, 1 metal liner
Village Garden Square Fire Pit	Outside: 39"W x 39"D x 15"H	1,336lbs	8 blocks per layer, 4 layers high, 32 blocks total, 4 caps, 1 metal liner



Chiseled Face Fire Pit, Charcoal



Chiseled Face Fire Pit, Tan



One Piece Fire Pit



Metal Fire Pit Ring Liner
(Included with any Fire Pit purchase. Also available in square.)



Village Garden Square Fire Pit
(Colors: Sandstone Blend, Charcoal, Earthen Blend)



Village Garde Square Fire Pit & Slate Paving Stones used as Caps



EDGING STONE

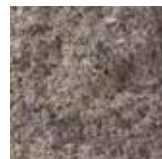
SPECIALTY PRODUCTS

Our three edging styles come in both straight and curved options to help you complete any type of project. Produced with strong, durable concrete, our various edging stone products will outlast nearly any other edging options making them the obvious choice for use to define borders on flowerbeds, walkways, paths, tree circles and more. Give your landscape an attractive, upscale look, and keep mulch and grass in its place.

VILLAGE STONE EDGING



Sandstone Blend



Earthen Blend



Limestone Blend

PRODUCT	H x W x D
Village	3 5/8" x 7 5/8" x 7 5/8"



USES: Gardens, Walkways, Picnic Areas, Playgrounds, Pools, & Courtyards



NitterRock



Desert Stone

LANDSCAPING STONE, SAND, & MULCH

SPECIALTY PRODUCTS

We offer a wide variety of beautiful unique natural stone options and sand in both bagged and bulk quantities. Our inventory is constantly changing. Contact us at 717-267-4500 for a current listing of items in stock.



River Gravel



3/4" Red Stone



Pocono River Stone

OPTIONS:

STONE

- Stone Dust
- Desert Stone
- NitterRock
- NitterBase
- Paver Base
- 1/2" Brown Chip
- 3/4" Red Stone
- River Gravel (3/4", 2", & 3")
- Pocono River Stone
- Clean Stone (1/2" & 3/4")

SAND

- Bedding Sand
- Fine Mason Sand
- C-144 Mason Sand
- White Sand

MULCH

- Natural, Dyed: Black & Brown
- Rubber: Black & Brown, Kids Rubber Mulch Brown



USES: Gardens, Walkways, Picnic Areas, Playgrounds, Pools, & Courtyards



SUPERIOR STEPS & SPLASH BLOCK COLLECTION

SPECIALTY PRODUCTS

Steps provide a quick and durable solution. They are easily installed and come in a variety of widths and number of steps to fit your needs. These steps are steel reinforced with broom finished treads to provide traction and a nonskid surface.

SPLASH BLOCK: Our concrete splash blocks used at the bottom of gutter and rain spouts are the most durable, produced with 3,500 psi concrete. These splash blocks will last in the harshest of weather year after year.

USES: Homes, Offices, Restaurants, & Schools



AVAILABILITY — can be picked up at our yard or delivered and installed at your jobsite.

RAILING OPTIONS — a full selection of residential and commercial steel or aluminum railings is available in standard sizes, or custom made to your specifications.

SITE PREPARATION — proper base preparation is necessary for installation. Concrete footer or slab recommended. Call for more options.

# OF STEPS	X HEIGHT	14" LANDING	36" LANDING	48" LANDING
1	7"	14"	36"	48"
2	14"	26"	48"	60"
3	21"	38"	60"	72"
4	28"	50"	72"	84"
5	35"	62"	84"	96"
6	42"	74"	96"	108"
7	49"	86"	108"	120"

AVAILABLE IN 4FT, 5FT, 6FT, & 7FT WIDTHS - IN THE FOLLOWING:

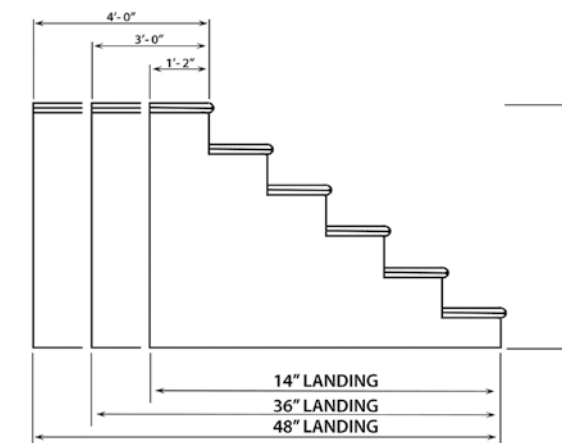
** Not available in 4ft width*

1 RISER	2 RISER	3 RISER	4 RISER	5 RISER	6 RISER	*7 RISER
14" Landing	14" Landing	14" Landing	14" Landing	14" Landing	14" Landing	14" Landing
36" Landing	36" Landing	36" Landing	36" Landing	36" Landing	36" Landing	36" Landing
48" Landing	48" Landing	48" Landing	48" Landing	48" Landing	48" Landing	48" Landing



STEP TREADS

STEP ENDS	DEPTH	WEIGHT
3'	1'	108lbs
4'	1'	145lbs
5'	1'	176lbs
6'	1'	216lbs
7'	1'	249lbs
8'	1'	284lbs



- Higher applications can be accommodated by stacking units
- Units can be placed side by side for installations wider than 7"
- All units have 7" risers with 12" treads. The top tread (landing) is either 14", 36", or 48"



STEP TREAD ENDS

STEP ENDS	WEIGHT
2 Step End	65lbs
3 Step End	143lbs
4 Step End	234lb
5 Step End	353lbs

SPLASH BLOCK

H x W x D	WEIGHT
24" x 3 1/8" x 12"	50lbs
36" x 3 1/8" x 12"	75lbs
48" x 3 1/8" x 12"	100lbs



CONCRETE FENCE POSTS

SPECIALTY PRODUCTS

Nitterhouse's concrete fence posts will stand the test of time and any weather conditions for years and years to come. They are sure to outlast any wooden post. Fence posts are available in 2 and 3 hole sizes. Post holes are large enough to accommodate standard sized tapered-end rails.



2 Hole Post 3 Hole Post

PRODUCT	WEIGHT	H x W x D
2 Hole Post	104lbs	58 3/4" x 7 1/2" x 3 1/2"
3 Hole Post	178 lbs	84" x 7 1/2" x 3 1/2"

* Bury 2' in the Ground

SUPERIOR CURB

SPECIALTY PRODUCTS

Nitterhouse Masonry Products' Superior Curbing can be installed easily year-round on top of new or existing asphalt with no special tools or skills required. Tongue and groove connectors and manganese alloy pins ensure correct alignment. Contact your Nitterhouse representative for more details.

SIZES: Include 36" Straight Sections, Various Radius Pieces, Inside and Outside Corners, as well as End Transitions



10' Convex Radius Drive Over Convex Radius



Straight 18" Right Transition Down Outside Convex Corner Inside Concave Corner

USES: Driveways, Parking Lots, Commercial Areas, Streets, & Garden Beds





PARKING BLOCKS

SPECIALTY PRODUCTS

You simply cannot beat the extremely durable and long lasting benefits that our concrete parking stops have to offer. They are easy to install and do not move, even after repeated vehicle impacts. Nitterhouse's concrete parking blocks withstand the test of time and the harshest weather conditions. We also produce a yellow parking block option that is highly visible and aids in designating appropriate parking areas.



PRODUCT	WEIGHT	L x H x W
6'L Car Stop	185lbs	6' x 4 7/8" x 7 5/8"
7'L Car Stop	240lbs	7' x 4 7/8" x 7 5/8"
8'L Car Stop	275lbs	8' x 4 7/8" x 7 5/8"
Log Parking Block	209lbs	6' x 4 7/8" x 6"
Truck Parking Block	933lbs	8' x 1' x 1'



Gray Car Stop



Yellow Car Stop



Log Car Stop



Truck Parking Block

NITTERHOUSE



MASONRY PRODUCTS, LLC

859 CLEVELAND AVENUE | CHAMBERSBURG, PA 17201
717-267-4500 | NITTERHOUSEMASONRY.COM