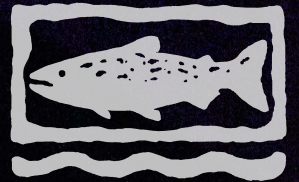


waterworks / lamson



2022

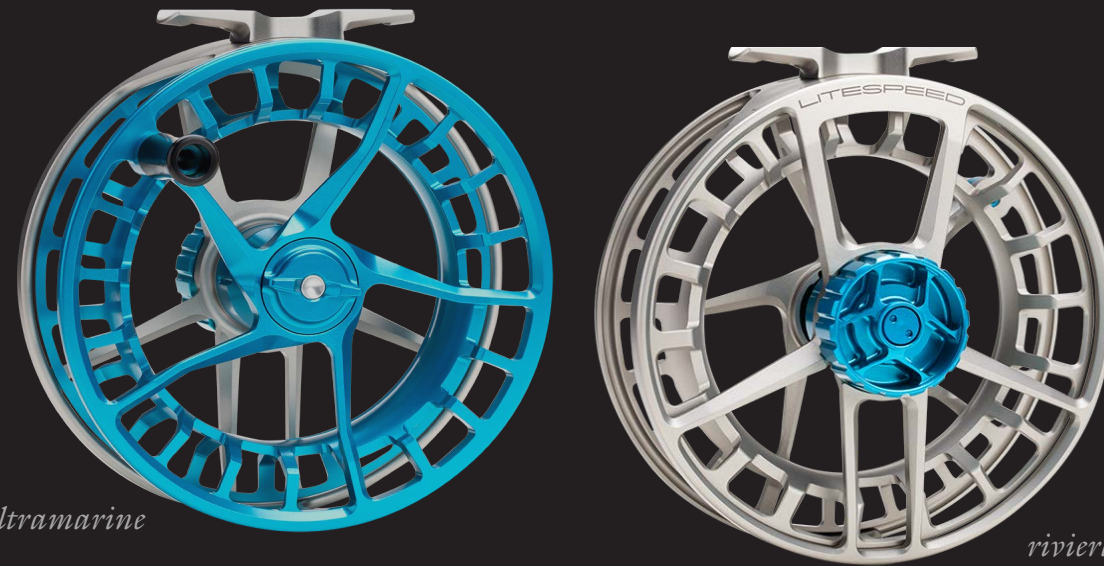


cobalt

Model	Dia	Width	Weight	Rod	Line	Capacity	Reel	Spool
6	3.85"	1.00"	5.0 oz	5,6	WF6	100 yds 20#	\$699.99	\$314.99
8	4.25"	1.00"	5.7 oz	7,8	WF8	250 yds 20#	\$749.99	\$329.99
10	4.53"	1.08"	10.3 oz	9,10	WF10	250 yds 30#	\$849.99	\$379.99
12	4.75"	1.25"	11.1 oz	11,12	WF12	250 yds 30#	\$899.99	\$399.99

The Cobalt drag is an industry first: not only is it certified waterproof to 100 feet by an independent test laboratory, the system is designed to produce its entire useful range of drag torque in a single revolution of the drag knob. Cobalt 10 and 12 feature a “set drag” system of adjustment that allows the angler to set a preferred stripping pressure against a stop, then access more torque in half-pound increments. Cobalt 6 and 8 forego the “set drag” in favor of a lighter system with finer resolution. Manufactured in the U.S.A. and assembled in Boise, Idaho.

LS M The marine version of Litespeed is equipped with a hybrid drag system, sharing some elements of the Cobalt drag – fixed spindle, large heat wicking conical surfaces, click stop drag knob. The LS M incorporates close tolerance composite bearings, and comes equipped with the same linear spring set found on LS F, optimized for each reel size. Like our Cobalt reel, it holds an IPX8 waterproof rating to 100 ft. LS M frame and spool share the same open structure as LS F, with emphasis on greater stiffness and stability. Manufactured in the U.S.A. and assembled in Boise, Idaho.



lamson litespeed M

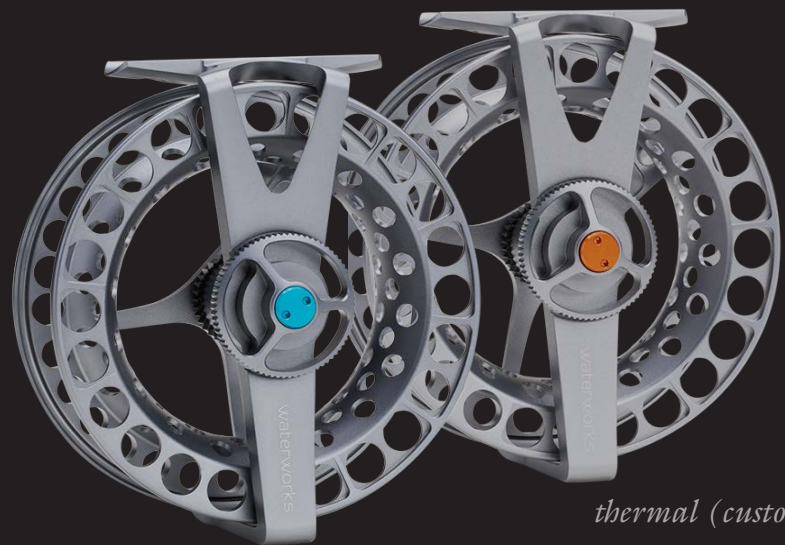
Model	Dia	Width	Weight	Rod	Line	Capacity	Reel	Spool
-8+	4.65"	0.95"	5.7 oz	7,8	WF8	250 yds 20#	\$649.99	\$324.99
-10+	4.82"	1.00"	6.6 oz	9,10	WF10	250 yds 30#	\$699.99	\$349.99
-12+	5.10"	1.19"	8.0* oz	11,12	WF12	300 yds 30#	\$749.99	\$374.99



lamson litespeed F

Model	Dia	Width	Weight	Rod	Line	Capacity	Reel	Spool
-3+	3.50"	0.90"	3.4 oz	2,3,4	WF4	75 yds 20#	\$529.99	\$259.99
-5+	3.75"	1.00"	3.6 oz	4,5,6	WF6	125 yds 20#	\$529.99	\$259.99
-7+	4.00"	1.00"	4.4 oz	6,7,8	WF8	150 yds 20#	\$549.99	\$279.99

LS F The LS F is the freshwater version of the Litespeed. The chassis is based on the conical system found in our other reels with the addition of a click stop drag knob and a unique spring set that creates a linear progression of torque with very fine resolution at the light end of its range. LS F spool and frame architecture is super-arbor in scale for high retrieve, but spare and open to promote line drying and of course, reduce weight. Manufactured in the U.S.A. and assembled in Boise, Idaho.



azure (custom)

thermal (custom)

Force SL Series II is the fourth generation of the reel that started our revolution. With an integrated foot, frame and cassette delivering more strength and a super arbor delivering the highest possible ratio of retrieve rate to reel weight. The world's lightest machined reel, by far. Manufactured in the U.S.A. and assembled in Boise, Idaho.



flash

waterworks force SL series II

Model	Dia	Width	Weight	Rod	Line	Capacity	Reel	Spool
-5+	4.10"	1.00"	3.3 oz	4,5,6	WF6	125 yds 20#	\$579.99	\$264.99
-7+	4.40"	1.28"	3.7 oz	6,7,8	WF8	180 yds 20#	\$599.99	\$289.99

lamson speedster

Model	Dia	Width	Weight	Rod	Line	Capacity	Reel	Spool
-3+	3.28"	0.90"	3.3 oz	2,3,4	WF4	50 yds 20#	\$379.99	\$189.99
-5+	3.65"	1.00"	3.8 oz	4,5,6	WF6	100 yds 20#	\$379.99	\$189.99
-7+	3.97"	1.12"	4.7 oz	6,7,8	WF8	180 yds 20#	\$419.99	\$199.99
-9+	4.29"	1.25"	5.7 oz	8,9,10	WF10	220 yds 30#	\$469.99	\$219.99

speedster HD (heavy duty, full frame reel - midnight finish only)

-7+	3.97"	1.12"	4.9 oz	6,7,8	WF8	180 yds 20#	\$439.99	\$199.99
-9+	4.29"	1.25"	6.0 oz	8,9,10	WF10	220 yds 30#	\$489.99	\$219.99



ember

midnight

Speedster S is an ultra large arbor reel built around our classic, ultra-smooth and reliable conical drag, power arm chassis for stiffness, and a narrower spool for clean line winding. The Speedster S is a perfect blend of high retrieve rates, light weight and advanced styling. Manufactured in the U.S.A. and assembled in Boise, Idaho.



blaze
-3+, -5+ only

O.G.

Guru S is our very popular, lowest-priced fully machined reel now in its third generation, which includes updated spool geometry for better retrieve rates, open porting to reduce weight and improve line drying and an integrated counter balance for structural stability. Guru sets the standard for CNC machined quality and reliability at a great price.



arctic
-7+, -9+ only

lamson guru S

Model	Dia	Width	Weight	Rod	Line	Capacity	Reel	Spool
-3+	3.20"	0.90"	3.7 oz	2,3,4	WF4	60 yds 20#	\$289.99	\$149.99
-5+	3.55"	1.00"	4.4 oz	4,5,6	WF6	100 yds 20#	\$289.99	\$149.99
-7+	3.97"	1.13"	5.0 oz	6,7,8	WF8	180 yds 20#	\$319.99	\$159.99
-9+	4.11"	1.23"	5.8 oz	8,9,10	WF10	220 yds 30#	\$339.99	\$169.99

guru S HD (heavy duty, full frame reel - blaze finish only)

-7+	3.97"	1.13"	5.2 oz	6,7,8	WF8	180 yds 20#	\$379.99	\$159.99
-9+	4.11"	1.23"	6.1 oz	8,9,10	WF10	220 yds 30#	\$399.99	\$169.99

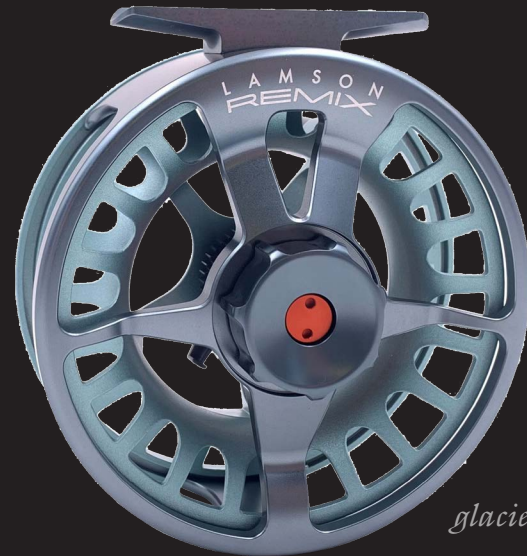
Remix marries the best of pressure cast technologies and CNC machining to deliver a durable frame in a hard bright finish coupled with a cast aluminum spool with u-shaped arbor. Remix shares the same drag technology as all of our more expensive reels.

Remix HD is the Heavy Duty spey and switch variant of Remix, incorporating a full cage design to capture thin diameter running lines that are notorious for escaping through spool/line guard gaps.

Remix HD 3-pack offers the same extreme value in the Heavy Duty spey/switch variant of Remix: one reel and two spools in a nylon carrying case.



smoke



glacier

lamson remix

Model	Dia	Width	Weight	Rod	Line	Capacity	Reel	Spool
-3+	3.34"	0.99"	4.3 oz	2,3,4	WF4	100 yds 20#	\$219. ⁹⁹	\$54. ⁹⁹
-5+	3.61"	1.00"	4.5 oz	4,5,6	WF6	100 yds 20#	\$219. ⁹⁹	\$54. ⁹⁹
-7+	3.85"	1.14"	5.5 oz	6,7,8	WF8	200 yds 20#	\$229. ⁹⁹	\$59. ⁹⁹
-9+	4.65"	1.37"	7.1 oz	8,9,10	WF10	250 yds 30#	\$239. ⁹⁹	\$69. ⁹⁹

lamson remix 3-pack (1 reel & 2 spools in a nylon case)

Remix 3-pack includes one reel and two spare spools in a nylon carrying case offering ease of interchangeability at a killer price.

RX-3+ 3-pack \$289.⁹⁹ RX-5+ 3-pack \$289.⁹⁹ RX-7+ 3-pack \$309.⁹⁹ RX-9+ 3-pack \$329.⁹⁹

lamson remix HD (heavy duty, full frame reel - smoke finish only)

Model	Dia	Width	Weight	Rod	Line	Capacity	Reel	Spool
-7+	3.98"	1.14"	6.4 oz	6,7,8	WF8	200 yds 20#	\$229. ⁹⁹	\$59. ⁹⁹
-9+	4.79"	1.37"	8.3 oz	8,9,10	WF10	250 yds 30#	\$249. ⁹⁹	\$69. ⁹⁹

lamson remix HD 3-pack (1 reel & 2 spools in a nylon case)

RX-7+ HD 3-pack \$319.⁹⁹ RX-9+ HD 3-pack \$339.⁹⁹

Liquid is a pressure cast reel boasting high retrieve rates, narrow spool, and a chassis built around our smooth and powerful conical drag system. Arguably the best fly reel in its price category.



glacier



smoke

lamson liquid

Model	Dia	Width	Weight	Rod	Line	Capacity	Reel	Spool
-3+	3.34"	0.99"	4.2 oz	2,3,4	WF4	100 yds 20#	\$129. ⁹⁹	\$54. ⁹⁹
-5+	3.61"	1.00"	4.7 oz	4,5,6	WF6	100 yds 20#	\$129. ⁹⁹	\$54. ⁹⁹
-7+	3.85"	1.14"	5.2 oz	6,7,8	WF8	200 yds 20#	\$139. ⁹⁹	\$59. ⁹⁹
-9+	4.65"	1.37"	6.7 oz	8,9,10	WF10	250 yds 30#	\$149. ⁹⁹	\$69. ⁹⁹

lamson liquid 3-pack (1 reel & 2 spools in a nylon case)

Liquid 3-pack includes one reel and two spare spools in a nylon carrying case offering ease of interchangeability at a killer price.

LQ-3+ 3-pack \$209.⁹⁹ LQ-5+ 3-pack \$209.⁹⁹ LQ-7+ 3-pack \$229.⁹⁹ LQ-9+ 3-pack \$249.⁹⁹



color sleeves (for remix & liquid reels)

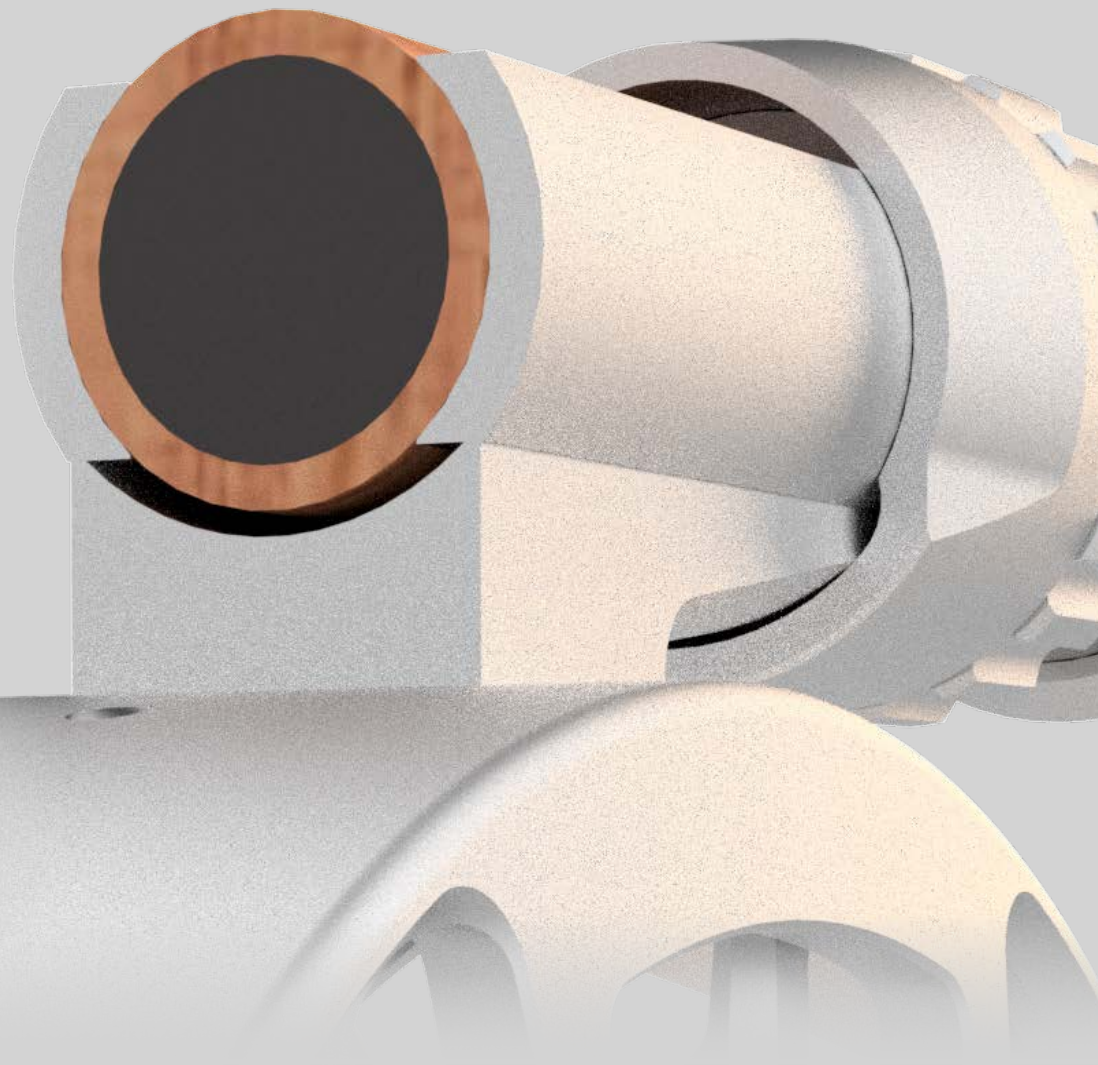
Salsa Green -3+/-5+	\$9. ⁹⁹	Burnt Orange -3+/-5+	\$9. ⁹⁹	Coral Blue -3+/-5+	\$9. ⁹⁹
Salsa Green -7+/-9+	\$9. ⁹⁹	Burnt Orange -7+/-9+	\$9. ⁹⁹	Coral Blue -7+/-9+	\$9. ⁹⁹

Lockdown™

A standard reel seat functions by squeezing two curved surfaces together with tapered fittings. But no matter how hard you press with the slide band the reel can still rock slightly side to side under load, and bit by bit, loosen the rings. We noticed this doesn't happen with our Center Axis rod/reel system: reels never shift on the rod and never require retightening. We challenged ourselves to rethink the standard reel seat to provide the same benefits.

Lockdown™ achieves stability by seating the straight edges of the reel foot on rails machined into the seat. This rail geometry requires very little pressure from the rings, and NEVER works its way loose while casting.

Ride the Rails



Lockdown™ reel seats featured on all rods



machined "rail" mounting surfaces prevent rotation of reel



reel locked in the closed position. no rotation, no loosening.

purist

Purpose built for technical fly fishing; for accuracy and finesse, for long leaders and small flies. Everything about Purist is focused on reducing upper section weight to enhance energy delivery, recovery, feedback and feel.

**two-piece construction*

Inspired by some of the most revered finesse rods of all time, we revived two-piece construction for our light line rods. Renown for their smooth energy and control, two-piece Purist rods deliver a classic action with modern performance.

**light progressive action*

The Purist blank is very progressive, with a supple tip that loads easily short, a mid-section that maintains tracking and stability of a solid butt section that stores and releases energy with perfect control.

**fusion format guides*

Purist incorporates a fusion of snake and single foot guides; small, thin wire, single foot guides are utilized in the top 1/3 of the rod to reduce weight and preserve the truest flex of the tip while traditional snake guides are utilized in the lower 2/3 of the rod to maximize durability and line tracking.

**vapor tech finish*

By removing only a small amount of exterior epoxy and sealing the finish with a fine vapor coating we avoid altering the action and integrity of the blank while ensuring a protective finish.

**zero G tip*

The combination of a small diameter, short tip top with minimal wraps and epoxy helps create the lightest tipped rod you'll find.

sizes 3 through 5



flor grade cork

*Lockdown™
reel seat*

** vapor tech
finish*

'reposito' insert

*charcoal and
scarlet wraps*

** fusion format guides*

** two-piece construction*

** light progressive action*

SiC stripper guide

smoke finished guides

** zero G tip*

velocity

Big flies on open water, blowing like hell? Yep. Send one out to a seam in the middle of a wide freestone and throw in a reach? Nailed it. 10" brookies in a beaver pond on 6X? Uh, not quite. But if speed is what you need . . .

**fast action high modulus blank*

We'll come clean from the outset, Velocity is the fresh-water sibling to our Cobalt series. Point and shoot, fast and furious, lifting power and laser loops.

**configuration A*

- Sizes 4 through 6
- Ember insert
- Flor grade cork
- Modified Ritz grip profile

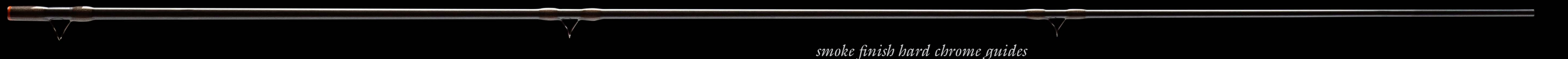
**configuration B*

- Sizes 7 through 8
- Satin black anodized aluminum insert
- Flor grade cork
- Full wells grip profile with composite cork fighting butt

sizes 4 through 8



** fast action high modulus blank*



cobalt

'Hand cannon' might be a term that comes to mind when you're on the flats with a Cobalt rod. Think of your fly as a projectile, that tarpon sliding by at 70 feet as a silhouette: aim and fire. Cobalt is our next evolution in saltwater performance. Available in a full range of calibers.

**ultra fast high modulus blank*

Cobalt rods are based on our popular SS-Salt blanks, crafted to deliver blistering line speed and wind conquering loops. Enough flex in the tip and mid-section to allow you to feel the action load but plenty of muscle to pick up that 70 feet of line for a quick re-cast.

**line ID*

Easy to read line weight laser etching for easy rod identification in boat rod racks.

**'sky grey' finish*

Signature 'Sky Grey' flat finish with UV stabilizers. High gloss dark finishes might look sharp in hand or on the rack but ask that twitchy permit waking out at 10 o'clock what she thinks.

**hybrid composite grips*

Natural cork is a wonderful material—functional, clean and elegant. However, repeated pressure, sunlight and salt exposure can wreak havoc on it. We mitigate damage to grips by adding composite cork at key stress points. We also spec natural color composite, just to keep things classy.

**Ti/SiC stripper guides*

Titanium frame stripper guides in gloss black anodize with silicon carbide inserts, extreme durability and corrosion resistance.

sizes 6 through 12

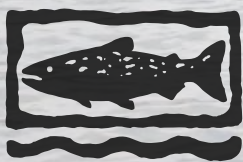


Purist 3,4,5	action light progressive	grip shape reverse half wells	reel seat Lockdown™ single uplocking	insert wood - 'reposado'
	line weight	length	sections	weight (oz)
Purist 905-2	5	9'	2	2.6
Purist 904-2	4	9'	2	2.5
Purist 893-2	3	8'9"	2	2.4
				MSRP
				\$399.99
				\$399.99
				\$399.99

Velocity 7,8	action fast	grip shape full wells w/ fighting butt	reel seat Lockdown™ double uplocking	insert aluminum - satin black
	line weight	length	sections	weight (oz)
Velocity 908-4	8	9'	4	4.4
Velocity 907-4	7	9'	4	4.2
				MSRP
				\$449.99
				\$449.99

Velocity 4,5,6	action fast	grip shape modified Ritz	reel seat Lockdown™ single uplocking	insert wood - 'ember'
	line weight	length	sections	weight (oz)
Velocity 906-4	6	9'	4	2.9
Velocity 905-4	5	9'	4	2.8
Velocity 904-4	4	9'	4	2.7
				MSRP
				\$399.99
				\$399.99
				\$399.99

Cobalt 6,7,8,9,10,11,12	action ultra fast	grip shape full wells w/ fighting butt	reel seat Lockdown™ double uplocking	insert aluminum - gloss gunmetal
	line weight	length	sections	weight (oz)
Cobalt 9012-4	12	9'	4	5.2
Cobalt 9011-4	11	9'	4	4.8
Cobalt 9010-4	10	9'	4	4.7
Cobalt 909-4	9	9'	4	4.5
Cobalt 908-4	8	9'	4	4.4
Cobalt 907-4	7	9'	4	4.2
Cobalt 906-4	6	9'	4	4
				MSRP
				\$449.99
				\$449.99
				\$449.99
				\$449.99
				\$449.99
				\$399.99
				\$399.99



**WATERWORKS
LAMSON**

waterworks-lamson.com

Dealer Services 208.726.1513
 Fax 208.726.1584
 Email info@waterworks-lamson.com
 Address (Billing) PO Box 817 Hailey, ID 83333

Warranty-Repairs-Support 208.562.1310
 Email warranty@waterworks-lamson.com
 Address 2756 S. Cole Rd. #110
 Boise, ID 83709