

2021 rods



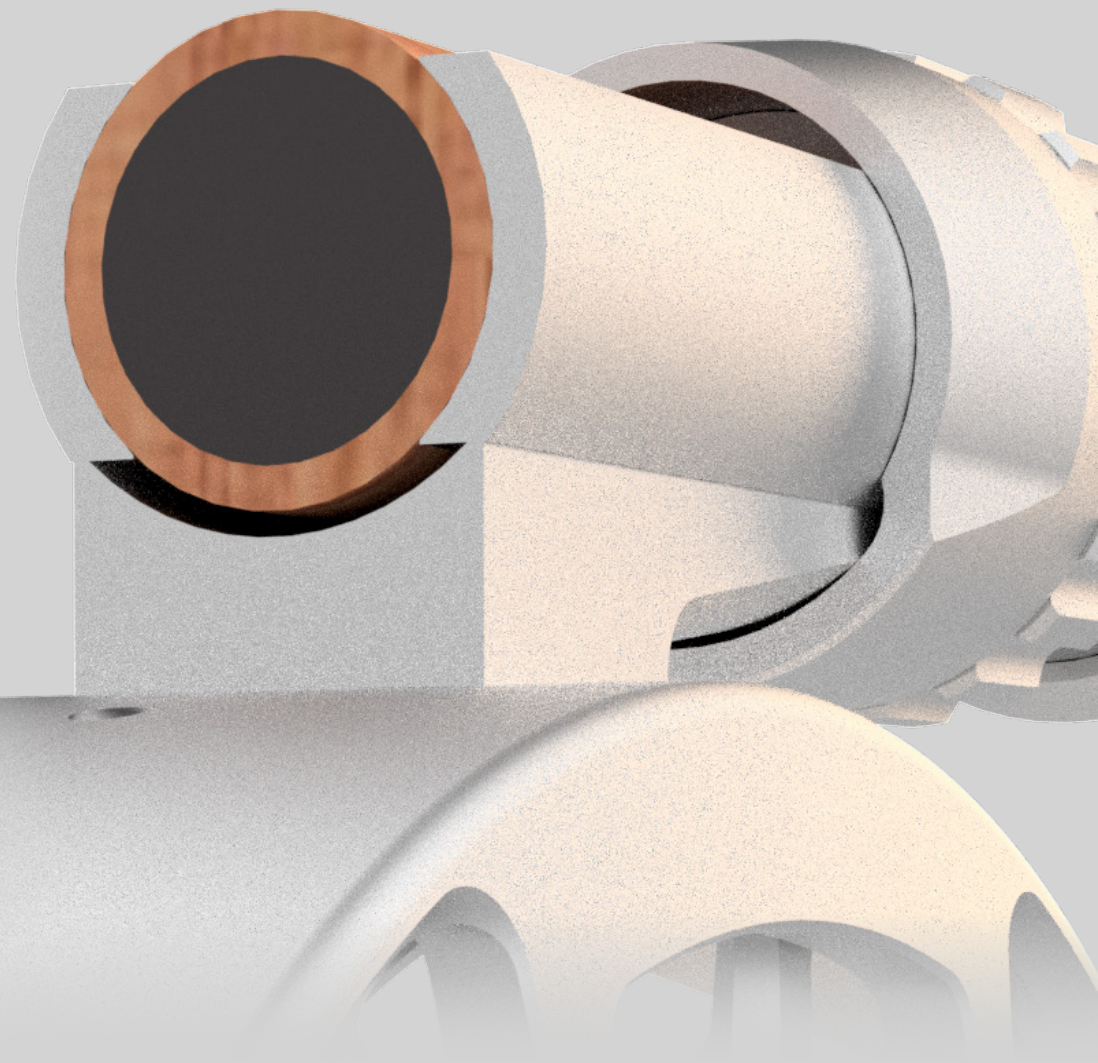
waterworks / lamson

Lockdown™

A standard reel seat functions by squeezing two curved surfaces together with tapered fittings. But no matter how hard you press with the slide band the reel can still rock slightly side to side under load, and bit by bit, loosen the rings. We noticed this doesn't happen with our Center Axis rod/reel system: reels never shift on the rod and never require retightening. We challenged ourselves to rethink the standard reel seat to provide the same benefits.

Lockdown™ achieves stability by seating the straight edges of the reel foot on rails machined into the seat. This rail geometry requires very little pressure from the rings, and NEVER works its way loose while casting.

Ride the Rails



Lockdown™ reel seats featured on all 2021 rods



purist

Purpose built for technical fly fishing; for accuracy and finesse, for long leaders and small flies. Everything about Purist is focused on reducing upper section weight to enhance energy delivery, recovery, feedback and feel.

**two-piece construction*

Inspired by some of the most revered finesse rods of all time, we revived two-piece construction for our light line rods. Renown for their smooth energy and control, two-piece Purist rods deliver a classic action with modern performance.

**light progressive action*

The Purist blank is very progressive, with a supple tip that loads easily short, a mid-section that maintains tracking and stability of a solid butt section that stores and releases energy with perfect control.

**fusion format guides*

Purist incorporates a fusion of snake and single foot guides; small, thin wire, single foot guides are utilized in the top 1/3 of the rod to reduce weight and preserve the truest flex of the tip while traditional snake guides are utilized in the lower 2/3 of the rod to maximize durability and line tracking.

**vapor tech finish*

By removing only a small amount of exterior epoxy and sealing the finish with a fine vapor coating we avoid altering the action and integrity of the blank while ensuring a protective finish.

**zero G tip*

The combination of a small diameter, short tip top with minimal wraps and epoxy helps create the lightest tipped rod you'll find.

sizes 3 through 5



flor grade cork

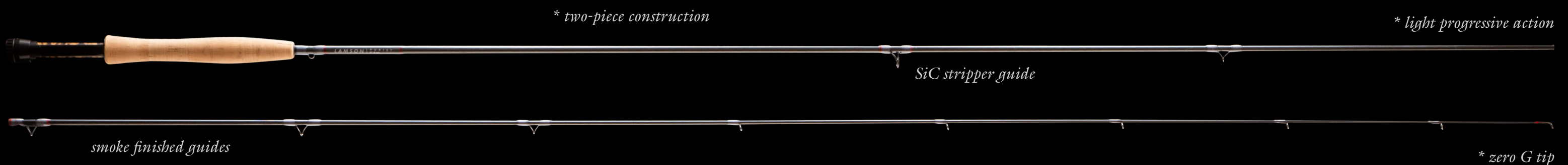
*Lockdown™
reel seat*

** vapor tech
finish*

'reposado' insert

*charcoal and
scarlet wraps*

** fusion format guides*



** two-piece construction*

** light progressive action*

SiC stripper guide

smoke finished guides

** zero G tip*

velocity

Big flies on open water, blowing like hell? Yep. Send one out to a seam in the middle of a wide freestone and throw in a reach? Nailed it. 10" brookies in a beaver pond on 6X? Uh, not quite. But if speed is what you need . . .

**fast action high modulus blank*

We'll come clean from the outset, Velocity is the fresh-water sibling to our Cobalt series. Point and shoot, fast and furious, lifting power and laser loops.

**configuration A*

- Sizes 4 through 6
- zebra wood insert
- Flor grade cork
- Modified Ritz grip profile

**configuration B*

- Sizes 7 through 8
- Satin black anodized aluminum insert
- Flor grade cork
- Full wells grip profile with composite cork fighting butt

sizes 4 through 8



** fast action high modulus blank*



cobalt

'Hand cannon' might be a term that comes to mind when you're on the flats with a Cobalt rod. Think of your fly as a projectile, that tarpon sliding by at 70 feet as a silhouette: aim and fire. Cobalt is our next evolution in saltwater performance. Available in a full range of calibers.

**ultra fast high modulus blank*

Cobalt rods are based on our popular SS-Salt blanks, crafted to deliver blistering line speed and wind conquering loops. Enough flex in the tip and mid-section to allow you to feel the action load but plenty of muscle to pick up that 70 feet of line for a quick re-cast.

**line ID*

Easy to read line weight laser etching for easy rod identification in boat rod racks.

**'sky grey' finish*

Signature 'Sky Grey' flat finish with UV stabilizers. High gloss dark finishes might look sharp in hand or on the rack but ask that twitchy permit waking out at 10 o'clock what she thinks.

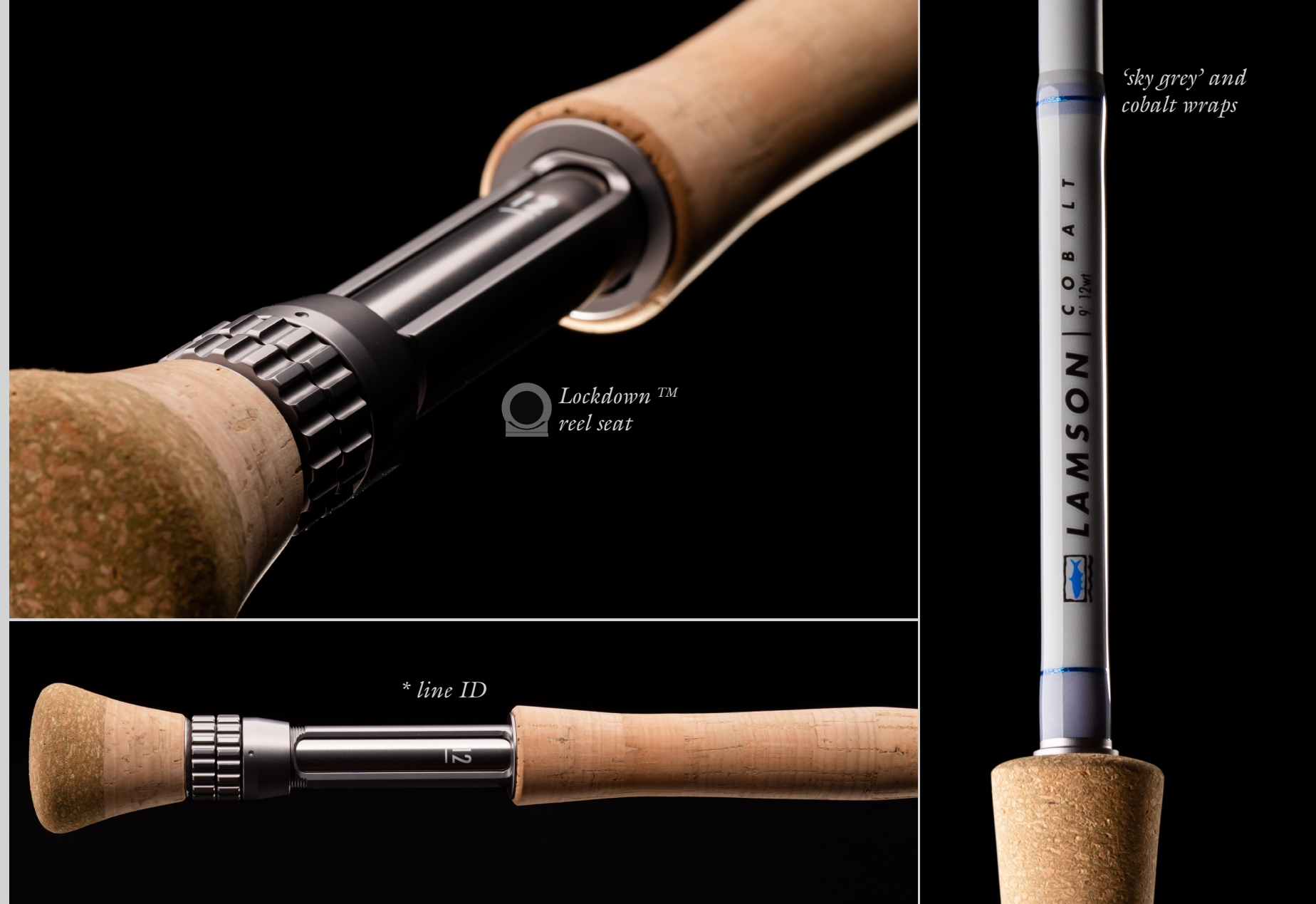
**hybrid composite grips*

Natural cork is a wonderful material—functional, clean and elegant. However, repeated pressure, sunlight and salt exposure can wreak havoc on it. We mitigate damage to grips by adding composite cork at key stress points. We also spec natural color composite, just to keep things classy.

**Ti/SiC stripper guides*

Titanium frame stripper guides in gloss black anodize with silicon carbide inserts, extreme durability and corrosion resistance.

sizes 6 through 12



Purist 3,4,5	action light progressive	grip shape reverse half wells	reel seat Lockdown™ single uplocking	insert wood - 'reposado'	
	line weight	length	sections	weight (oz)	MSRP
Purist 905-2	5	9'	2	2.4*	\$399.99
Purist 904-2	4	9'	2	2.4*	\$399.99
Purist 893-2	3	8'9"	2	2.3*	\$399.99

Velocity 7,8	action fast	grip shape full wells w/ fighting butt	reel seat Lockdown™ double uplocking	insert aluminum - satin black	
	line weight	length	sections	weight (oz)	MSRP
Velocity 908-4	8	9'	4	4.2*	\$449.99
Velocity 907-4	7	9'	4	4*	\$449.99

Velocity 4,5,6	action fast	grip shape modified Ritz	reel seat Lockdown™ single uplocking	insert wood - 'ember'	
	line weight	length	sections	weight (oz)	MSRP
Velocity 906-4	6	9'	4	2.8*	\$399.99
Velocity 905-4	5	9'	4	2.7*	\$399.99
Velocity 904-4	4	9'	4	2.7*	\$399.99

Cobalt 6,7,8,9,10,11,12	action ultra fast	grip shape full wells w/ fighting butt	reel seat Lockdown™ double uplocking	insert aluminum - gloss gunmetal	
	line weight	length	sections	weight (oz)	MSRP
Cobalt 9012-4	12	9'	4	4.9*	\$449.99
Cobalt 9011-4	11	9'	4	4.8	\$449.99
Cobalt 9010-4	10	9'	4	4.7	\$449.99
Cobalt 909-4	9	9'	4	4.5	\$449.99
Cobalt 908-4	8	9'	4	4.4	\$449.99
Cobalt 907-4	7	9'	4	4.2	\$399.99
Cobalt 906-4	6	9'	4	4	\$399.99



kyra farris

* pre-production estimate



**WATERWORKS
L A M S O N**

waterworks-lamson.com

Dealer Services 208.726.1513
Fax 208.726.1584
Email info@waterworks-lamson.com
Address (Billing) PO Box 817 Hailey, ID 83333

Warranty-Repairs-Support 208.562.1310
Email warranty@waterworks-lamson.com
Address 2756 S. Cole Rd. #110
Boise, ID 83709