

New Products For 2020/21

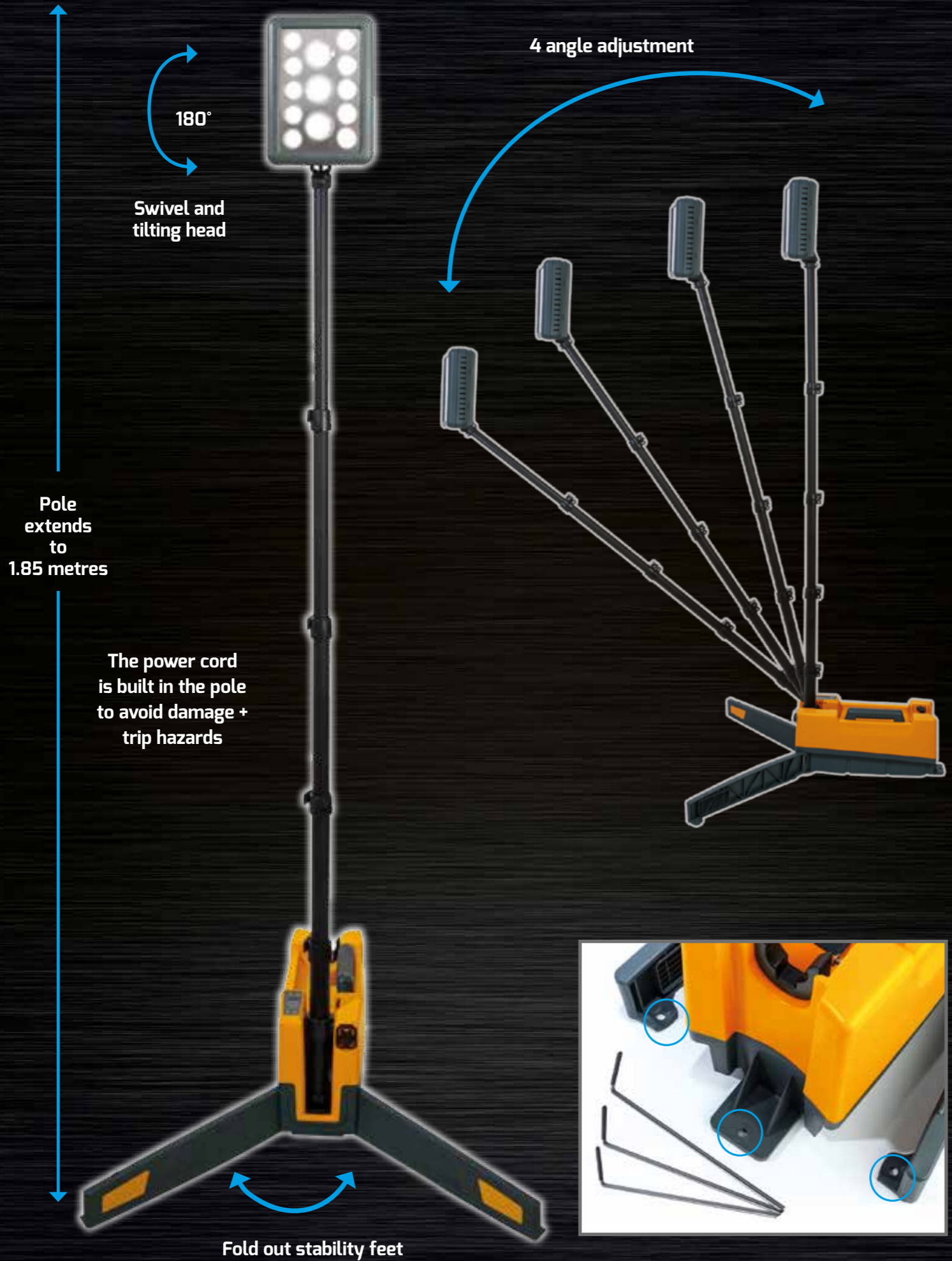


NightSearcher



Solaris Pro

Rechargeable Lighting System - 16,000 Lumens



4 angle adjustment

180°

Swivel and tilting head

Pole extends to 1.85 metres

The power cord is built in the pole to avoid damage + trip hazards

Fold out stability feet

16,000 Lumens



48 HOURS RUNTIME

500m METRES BEAM



- 16,000 lumens with 500m beam
- 2 Light beams - Wide and Narrow
- Lightweight Lithium-Ion batteries
- Tough impact resistant housing
- Collapses to compact size
- Fast deployment, set up in seconds
- 180° Swivel and tilting light head
- Built in cable, so no trailing cables

Specification:

- Runtime up to 48 hours
- Mast extends up to 1.85m
- IP65 Rated
- Dimensions: 517x155x200mm
- Supplied with AC charger and shoulder strap
- Optional: Vehicle charger and stability pegs



Stability ground pegs for use on a slope or uneven terrain

		2 MODELS	
		Solaris Pro	Solaris Pro X
3 Modes	Lumens	Runtime	Runtime
Boost (Search + Flood)	4,000 - 16,000	2h 15m - 9h	4h 30m - 18h
Search wide beam	1,250 - 5,000	6h - 24h	12h - 48h
Flood narrow beam	2,750 - 11,000	3h 45m - 15h	7hrs 30m - 30h
Weight		7kg	8.5kg
Product Code		NSSOLARISPRO	NSSOLARISPRO-X



Digital display for selection of operation modes and programming a runtime of up to for 48 hours.

New Upgraded Battery Pack

20,000 Lumens



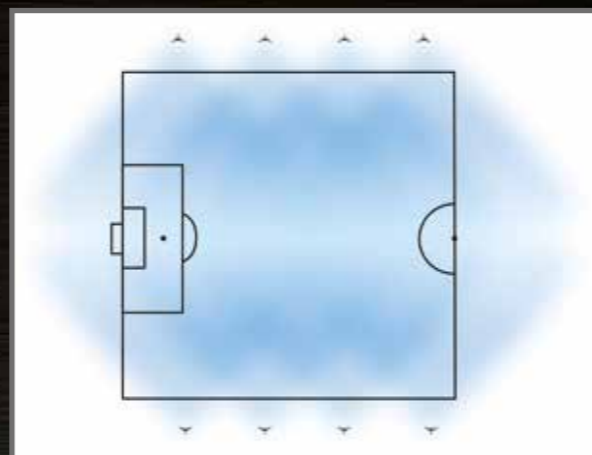
16 HOURS RUNTIME



50m METRES BEAM



Eight units will illuminate a 60 x 40m area (a standard size of a sports training pitch/ half a full sized football pitch).



Supplied in weatherproof sports bag.



- 20,000 lumens
- Air cushioned safety tripod
- Lightweight Lithium-Ion rechargeable battery pack
- Easy to carry and store
- No planning permission required
- Fast and easy set up
- Fully rechargeable
- On/Off switch conveniently located on battery
- Weatherproof
- Easily fits in boot of cars

Specification:

- Runtime up to 2-16 hours
- Mast extends up to 3.5m
- IP54 Rated
- Weight: 11.5kg
- Dimensions: 98x20x20cm
- Supplied in a sports bag

Sports Star	
Lumens	Runtime
20,000	2hrs
10,000	4hrs
4,000	8hrs
2,000	16hrs

Product Code: NSSPORTSTAR

Sport Star

Rechargeable Sports Floodlighting Kit - 20,000 Lumens

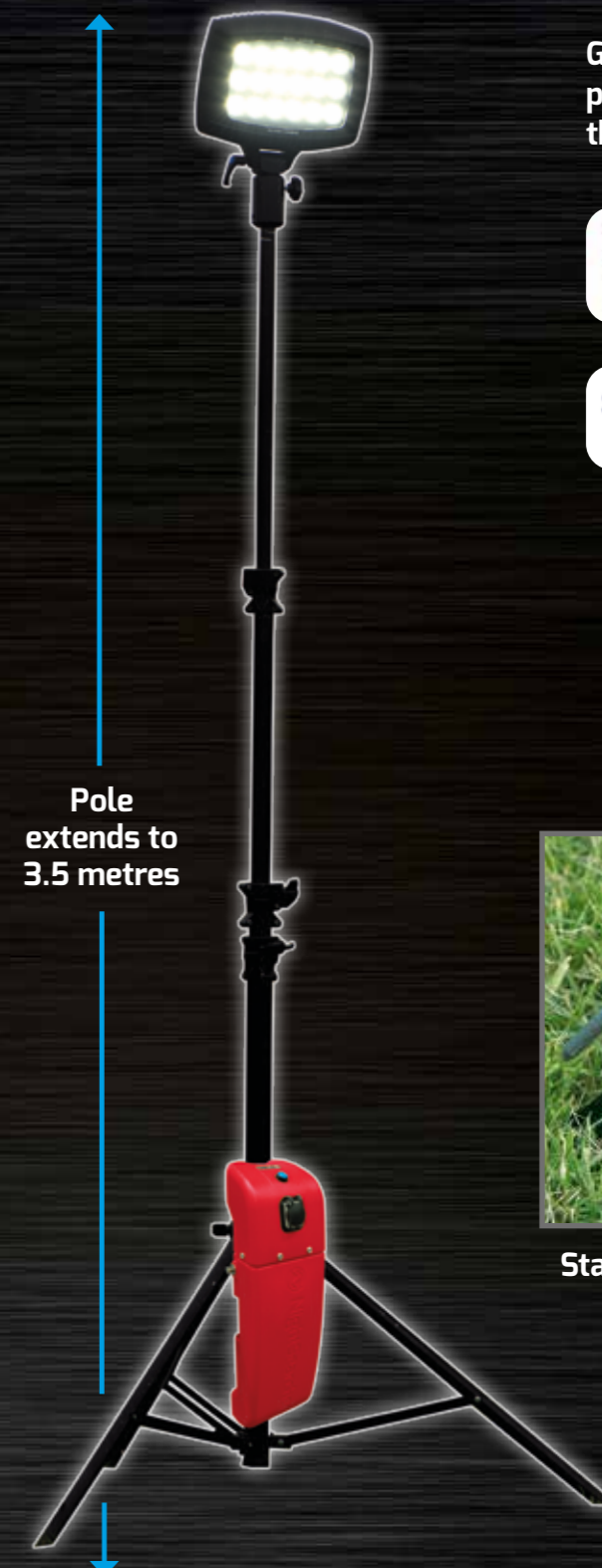
Battery status/Charging indicator



On/off Light mode switch



- IP54 Rated
- Durable polycarbonate construction



Pole extends to 3.5 metres

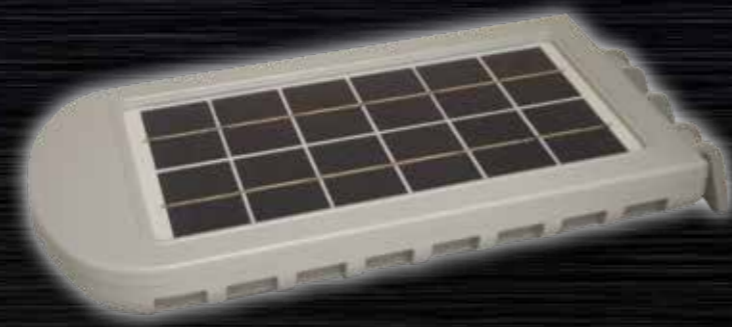
Grants available for portable floodlights through:



Stability ground pegs

Kit includes:

- 20,000 Lumen light head
- 4 Section 3.5m air cushioned safety tripod
- 18Ah Lithium battery pack
- 3 x Stability ground pegs
- Weatherproof bag with shoulder strap and carry handles for easy transportation
- 1 x Mains charger



NexSun 500

- 500 lumens
- Up to 8 hours runtime
- Poly crystalline Solar Powered 4W 6V
- 5 Metre PIR detection range
- Fully recharges in 9 hours
- IP65 Rated
- Weight: 0.76kg
- Dimensions: 350x150x35mm

Product Code: NEXSUN-ST500

500
Lumens

8 HOURS
RUNTIME



NexSun500



Environmentally Friendly
= 100% Energy Saving



DAY + NIGHT
AUTO
SENSOR

NexSun1200



NexSun 1200

- 1,200 lumens
- Up to 12 hours runtime
- Poly crystalline Solar Powered 12W 16V
- 12 Metre PIR detection range
- Fully recharges in 6 hours
- IP65 Rated
- Weight: 2.12kg
- Dimensions: 515x220x95mm

Product Code: NEXSUN-ST1200

1200
Lumens

12 HOURS
RUNTIME



Light up your school sports grounds,
horse paddocks, car parks and yards

- No need for electricians – Easy to install
- Ideal for where no AC mains power exists
- Wall or Pole mounts
- Remote control

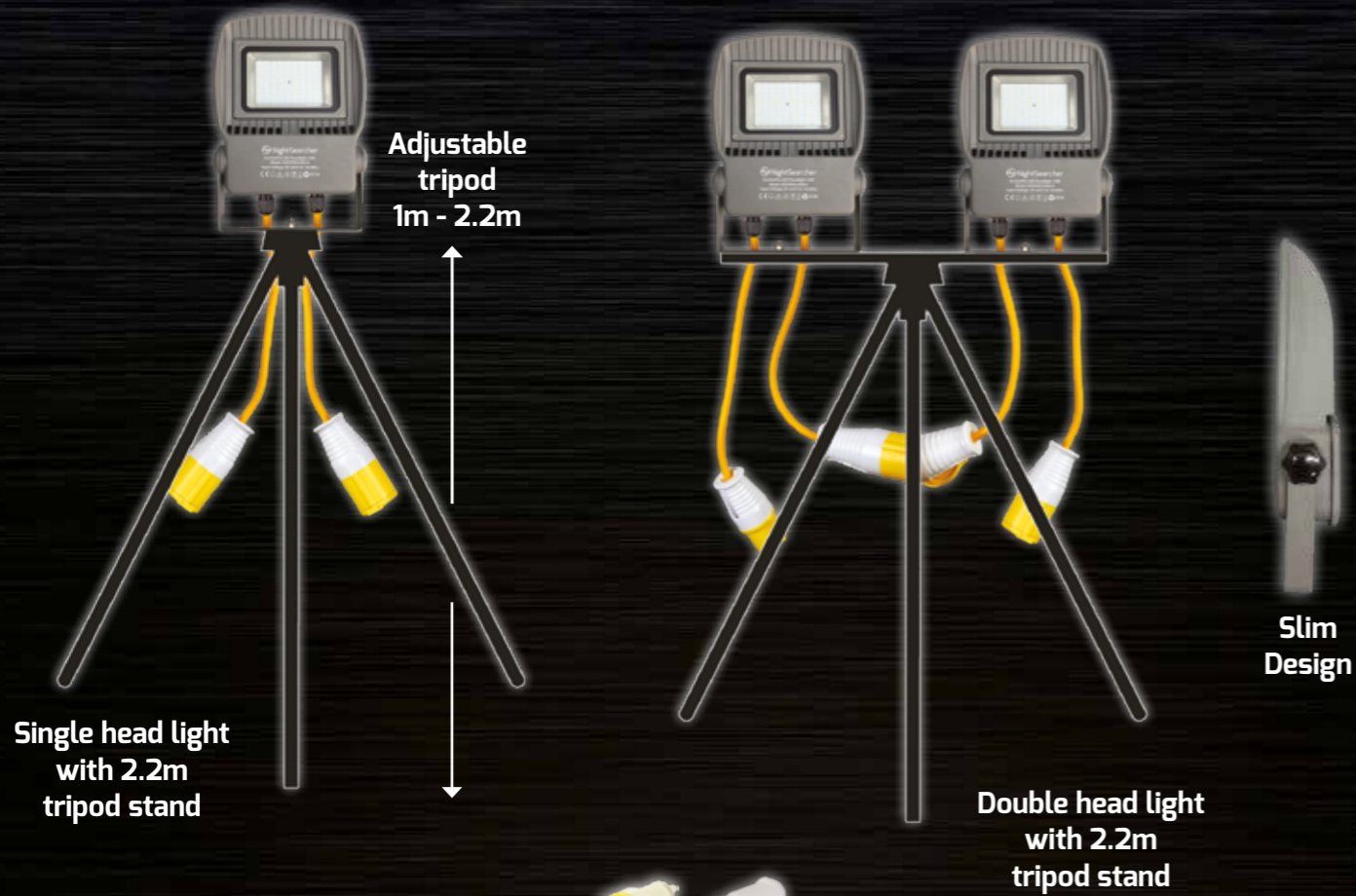
Lights can be pole mounted or wall mounted.

3 Modes:-

1. On low, until motion detected, then switches to full brightness
2. Light only comes on when motion detected
3. Light constantly on low

LinkStar

Linkable Site Floodlights



- 110V or 240V Linkable Floodlights
- **Three choices:**
30W 3,600 lumens, 50W 6,000 lumens or 100W 12,000 lumens light heads
- Strong die-cast aluminium casing with stainless steel fitting
- Designed for industrial applications
- Toughened glass lens
- IP65 Rated
- Supplied with 2.2m tripod

110V LinkStar



PRODUCT CODE	Lumens
NSLINKSTAR30	3,600 One head
NSLINKSTAR30-TWIN	7,200 Two heads
NSLINKSTAR50	6,000 One head
NSLINKSTAR50-TWIN	12,000 Two heads
NSLINKSTAR100	12,000 One head
NSLINKSTAR100-TWIN	24,000 Two heads



Optional Accessory:
14 Metre extension lead
Product Code: SPCABLE14M

SafAtex SL

Atex Rechargeable Searchlight - 370 Lumens

370 Lumens



4-30 HOURS RUNTIME

400m METRES BEAM

400m METRES BEAM

Slim Design



MINING APPROVED

ZONES 0

- Powerful 370 lumens with 400m beam
- 3 modes: High/Medium/Low
- Wide angled flood beam
- Rechargeable Lithium-Ion battery
- Unique deep dish reflector
- High powered LED
- Gas pressure release valve

Specification:

- Runtime up to 30 hours (low mode)
- IK07 Shock proof
- IP54 Rated
- Weight: 656g
- Dimensions: 220x120x155mm

Product code: NSAFA-SL



Certification

ATEX Certification
Ex: I M1 Ex ia I Ma
Ex: II 1G Ex ia op is IIC T4 Ga (Zone 0)
SIRA 17 ATEX 2195X



RoHS



IECEX Certification
Mining: Ex ia op is I Ma
Gas: Ex ia op is IIC T4 Ga (Zone 0)
SIR 17.0042X



UL Certification
Class I DIV 1&2 Groups A B C D
Temp Code: T4 IP64
File Number E261379



Supplied with charging base,
AC charger and shoulder strap

- Fast Deployment
- Automatic switch on and sequencing
- Automatically switch off when placed back in case
- 6 Flash modes
- Up to 72 Hours runtime
- Virtually indestructible, shock resistant plastic housing
- Visible from over 1 Kilometre
- IP68 Waterproof - Floats in water
- Crushproof - Up to 3 tonnes

Specification:

- Super bright SMD LED
- Rechargeable 3.7V 750mAh Lithium-Ion battery
- Retained in case by magnetic base
- Working Temperature -40° to 60°C
- Weight: 3.2kg
- Dimensions: 270mmx70mmx370mm
- Supplied with AC and Vehicle charger

Product code: NSPULSARMAX8-FD

Pulsar Max Fast Deployment

Sequential Rechargeable Hazard Lights - Set of 8



Optional cone magnetic mount spring type is available



72 HOURS RUNTIME

Visible from 1km

360° ILLUMINATION



Set Of 8
4 Stored on each side

Selective Colour:
Lights can be changed from:
Blue - Red - Amber



Automatic switch on,
Automatic sequencing



Crushproof - Vehicles up to 3 tonnes



Pocket Pro

Rechargeable Work Light & Torch - 600 Lumens

600 Lumens

5-6 HOURS RUNTIME

25m METRES BEAM



- 600 lumens work light, up to 2.5 hours runtime
- 300 lumens torch, up to 6 hours runtime
- 3 modes: High, low & torch
- Rechargeable Lithium-Ion battery
- Magnetic base & 180° folding handle
- Hanging hook & belt clip
- Conveniently fits in your pocket

Product Code: NSPOCKETPRO

Specification:

- IK07 Shock proof
- Quick 2.5 hours charging time
- Resistant to workshop chemicals & solvents
- Weight: 126g
- Dimensions: 61x35x118mm
- Supplied with fast charging USB Type C charging cable & AC adaptor



Inspection torch



Work light

Mini Magnum

Rechargeable Flashlight - 2,000 Lumens

2000 Lumens

2-57 HOURS RUNTIME

400m METRES BEAM



- Powerful 2,000 lumens with 400m beam
- 5 modes: Boost/High/Medium/Low/Flashing
- High capacity 5000mAh Lithium-Ion battery
- Battery status + charging indicator
- IP68 - Waterproof
- Transportation switch lock
- Type III hard anodised aluminium housing

Specification:

- Super bright Cree® XHP LED
- Runtime up to 57 hours (low mode)
- IK07 Shock proof
- Weight: 316g
- Dimensions: 158x50mm ø
- Supplied with USB rechargeable Li-ion battery, charging cable and wrist strap

Product Code: NSMNI-MAGNUM



Transportation switch lock



Micro USB rechargeable Li-ion battery

WorkStar Connect

Power Tool Work Light - 2,500 Lumens

2500 Lumens



57 HOURS RUNTIME

25m

METRES BEAM



- Operates from power tool batteries
- Powerful 2,500 lumens with 25 metre beam
- 3 modes: High, medium & low
- Powerful magnetic base
- Hanging hook
- Power bank to charge your mobile
- Tripod mountable

Specification:

- IP54 Rated
- IK07 Shock proof
- Up to 16 hours runtime
- Weight: 1kg
- Dimensions: 255x90x340mm

Product Code: NSWORKSTARCONNECT



Power bank to charge your mobile



Supplied with 4 power tool adapters

Accepts 14-21V batteries:
Black & Decker,
Bosch, Makita, Stanley,
Dewalt, Porter and
Milwaukee



HazStar

Rechargeable Hazard Work Light - 2,000 Lumens

2000 Lumens



9 HOURS RUNTIME

15m

METRES BEAM



Rear red lights can be removed and magnetically placed around a broken down vehicle

- Powerful 2,000 lumens
- Front work light with 15m beam and 6 hours runtime
- Rear Red Hazard light with 100m visibility, 9 hours runtime
- 3 modes: High, medium & low
- Rechargeable Lithium-Ion battery
- Battery status + charging indicator
- Power bank to charge your mobile

Specification:

- IP65 Rated
- IK07 Shock proof
- Weight: 965g
- Dimensions: 255x90x340mm
- Supplied with USB charging cable

Product Code: NSHAZSTAR





UK

Unit 4, Applied House, Fitzherbert Spur,
Farlington, Hampshire, PO6 1TT, UK
023 9238 9774 | sales@nightsearcher.co.uk
www.nightsearcher.co.uk

EUROPE

Garbary 53, Poznan,
Poland
+48 61 624 29 98 | exportsales@nightsearcher.co.uk
www.nightsearcher.com

