



RUBBER TACTILE INDICATORS



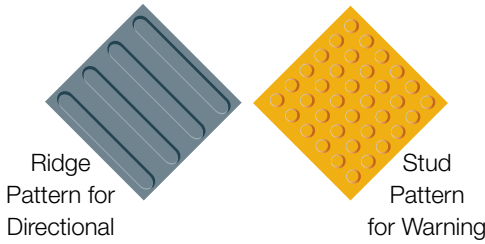
Tactiles meet the Australian Standard AS/NZS 1428.4, Building Code of Australia and exceed the anti-slip requirements of AS/NZ 4586. Guaranteed to conform to each of the dimensional requirements and provide safe and effective tactile cues for the vision impaired.

These Tactile Indicators have a raised profile to alert visually impaired individuals of an upcoming hazard, or provide them with guidance for safe passage. The Tactiles are available in two types: round ridge patterns for warning of hazards; or a long, straight ridge pattern for directional guidance. The adhesive is a strong two-part mixture that is suitable for both indoor and outdoor use.

STANDARD PACKAGE: 1

Part No.	Style	Colour	Size	Price (EX GST)	B
845830	Warning	Safety Yellow	300 x 600mm	\$54.90	
845831	Warning	Terracotta	300 x 600mm	\$54.90	
845832	Warning	Pacific Blue	300 x 600mm	\$54.90	
845833	Warning	Grey	300 x 600mm	\$54.90	
845834	Warning	Black	300 x 600mm	\$54.90	
861020	Warning	Safety Yellow	600 x 900mm	\$139.00	
861023	Warning	Terracotta	600 x 900mm	\$139.00	
861021	Warning	Pacific Blue	600 x 900mm	\$139.00	
861024	Warning	Grey	600 x 900mm	\$139.00	
861022	Warning	Black	600 x 900mm	\$139.00	
845837	Directional	Safety Yellow	300 x 600mm	\$54.90	
845836	Directional	Terracotta	300 x 600mm	\$54.90	
845838	Directional	Pacific Blue	300 x 600mm	\$54.90	
845839	Directional	Grey	300 x 600mm	\$54.90	
845835	Directional	Black	300 x 600mm	\$54.90	
861025	Directional	Safety Yellow	600 x 900mm	\$139.00	
861028	Directional	Terracotta	600 x 900mm	\$139.00	
861026	Directional	Pacific Blue	600 x 900mm	\$139.00	
861029	Directional	Grey	600 x 900mm	\$139.00	
861027	Directional	Black	600 x 900mm	\$139.00	
861030	Installation Kit	-	For Rubber Indicators	\$79.90*	
845840	Two-Part Adhesive	-	2kg (Covers 1.5m ²)	\$49.90*	
845841	Two-Part Adhesive	-	5kg (Covers 3.5m ²)	\$79.90*	

* GST applies to adhesive and installation kit. All tactile indicators are GST exempt.



Installation Kit Contents:

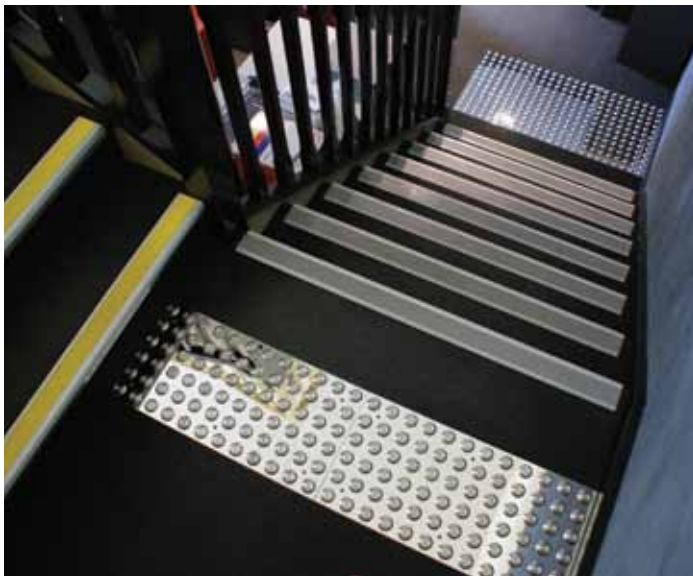
- 1 x Knife
- 1 x 1kg Two-part Adhesive
- 1 x 10m Masking Tape
- 1 x Instruction Sheet
- 1 x Trowel
- 1 x Cutting Template

Each 1kg of adhesive covers 0.75m² or four 300 x 600mm tiles.

Colours Available:



Complies to AS/NZS 1428.4 Tested to AS/NZS 4586, R11 Slip Resistance, exceeding the R10 requirement



TACTILE INDICATOR PLATES

316 marine grade stainless steel tactile plates are easy to install. With six pre-drilled and countersunk holes it's easy to locate the plates and secure them down.

Architecturally attractive and provide a cost effective method over difficult substrates such as escalator maintenance hatches, carpet with underlay and timber decking.

STANDARD PACKAGE: 1

Part No.	Description	Dimensions	Price (EX GST)	B
872368	72 Studs	300 x 600mm	\$329.00	

Note: All tactile indicators are GST exempt.



STAINLESS STEEL INDICATOR STUDS

Designed to meet all aspects of the AS/NZS 1428.4 Tactile Ground Surface Indicators including the minimum luminance contrast and anti-slip requirements. Indicators comply with the Building Code of Australia and exceed the anti-slip requirements of AS/NZ4586. The grit option is ideal for metallic surfaces to achieve 60% luminance requirements under AS/NZS 1428. All styles have achieved a R13 Slip Rating which is the highest available under AS/NZS 4586.

Studs are 35mm in diameter, 5mm protrusion height. Spigot measures 15x6mm. Note: To cover an area of 600 x 900mm, you will need 216 studs - generally the minimum requirement for a single hazard, however you will require two lots to cover the top and bottom of the hazard.

Installation Kits:

Spigot Installation Kit includes – template, 6mm drill bit with limit sheath, adhesive, caulking gun, installation instructions.

Plain-Backed Installation Kit comes with – template, cleaning agent, abrasive pad, adhesive, adhesive applicator gun, installation instructions. For additional adhesive see price table.

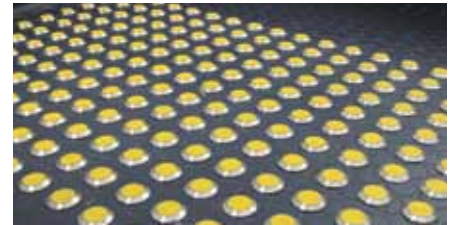
STANDARD PACKAGE: 1

Part No.	Description	Stud Type	Price (EX GST)
848446	Stainless Steel	Spigot	\$2.90
848447	Stainless Steel	Non-Spigot	\$2.90
861032	Grit, Yellow	Spigot	\$3.50
861033	Grit, Black	Spigot	\$3.50
861034	Grit, Yellow	Non-Spigot	\$3.50
861035	Grit, Black	Non-Spigot	\$3.50
861036	Installation Kit	For Spigot Stud	\$279.00*
861037	Installation Kit	For Non-Spigot Stud	\$379.00*
861038	Additional Adhesive	For Spigot Stud	\$54.90*
861039	Additional Adhesive	For Non-Spigot Stud	\$69.90*

* GST applies to adhesive and installation kits. All tactile indicators are GST exempt.

Note: Adhesive in kits will cover a 600 x 900mm area at the top and bottom of a hazard. Additional adhesive for spigotted studs will do approximately 300 studs, additional adhesive for non-spigotted studs will do approximately 120 studs. With a depth of 600mm, 240 studs cover 1 lineal metre.

Complies to AS/NZS 1428.4 Tested to AS/NZS 4586, R13 Slip Resistance, exceeding the R10 requirement.



Grit Non-Spigot



Grit Spigot



Stainless Steel Non-Spigot



Stainless Steel Spigot

FREE STANDING HANDRAILS

Pre-manufactured from 316 marine grade stainless steel and packaged ready to be assembled for light to medium applications. Balustrade posts are supplied pre-cut, drilled and with base and top rail supports attached - installation made easy.

Suit almost any application of up to four metres above ground floor level including ramps, stairs and balconies. Wall-mounted hand bracket also available.



STANDARD PACKAGE: 1

Part No.	Description	Price (EX GST)
872018	42mm Post - Mid Section	\$295.00
872019	42mm Post - Corner	\$335.00
872020	42mm Post - End	\$429.00
872021	Adjustable Post*	\$319.00
872022	Top Rail Tube	\$115.00/m
872023	Corner Fitting	\$44.50
872024	Free End Fitting	\$15.90
872025	Wall End Fitting	\$34.50
872026	Top Rail Extension Fitting**	\$19.90
872027	Hydraulically Swagged Wire	\$39.90 Plus \$2.85/m
872028	Handrail Wall Bracket	\$53.90

* Stair Tread Application.

**For lengths greater than 3m.

VISUAL WARNING



ANTI-SLIP STAIR NOSINGS



A necessity for busy stairways, these Anti-Slip Stair Nosings ensure grip on steps, whether outdoors or indoors. The grit finish is designed for outdoor use, being a stronger compound and offering substantially more traction. The rubber finish is designed for indoor use. Easy to install, the aluminium extrusions are pre-drilled and come in pre-cut 900mm or 1200mm lengths. Carpet-friendly extrusions are also available which feature 'grippers' so nosing doesn't move. Simply choose the appropriate kit to suit your application. Kit includes self-adhesive anti-slip inserts (grit or rubber), stainless steel screws and plastic screw anchors. Simply use an 8 gauge drill-bit for surface. Kit and extrusion required for each individual step. Available with a standard 30mm leading edge or in A Series with a 10mm leading edge for NCC compliance.

Meets width and luminance contrast requirements of BCA 3.2 and AS/NZS 1428.1:2001. Both surfaces tested to AS/NZS 4586:2004 – Grit R13, Rubber R10



ProStep CA



ProStep Highlight



ProStep SL



ProStep TS



ProStep Classic



ProStep PL



ProStep VL

Part No.	Name	Description	Colour/Style	NCC	Price (EX GST)
859813	ProStep Classic	900mm Aluminium Extrusion	Standard	N	\$29.90
859814	ProStep Classic	1200mm Aluminium Extrusion	Standard	N	\$34.90
859815	ProStep CA	900mm Aluminium Extrusion	Carpet	N	\$42.50
859816	ProStep CA	1200mm Aluminium Extrusion	Carpet	N	\$49.90
873950	ProStep TS	900mm Aluminium Extrusion	Twin	N	\$34.90
873951	ProStep TS	1200mm Aluminium Extrusion	Twin	N	\$44.90
873952	ProStep PL	900mm Aluminium Extrusion	Photolum.	N	\$47.50
873953	ProStep PL	1200mm Aluminium Extrusion	Photolum.	N	\$55.00
873954	A Series ProStep Classic	900mm Aluminium Extrusion	Standard	Y	\$32.50
873955	A Series ProStep Classic	1200mm Aluminium Extrusion	Standard	Y	\$37.50
873956	A Series ProStep CA	900mm Aluminium Extrusion	Carpet	Y	\$44.90
873957	A Series ProStep CA	1200mm Aluminium Extrusion	Carpet	Y	\$52.50
873958	A Series ProStep TS	900mm Aluminium Extrusion	Twin	Y	\$37.50
873959	A Series ProStep TS	1200mm Aluminium Extrusion	Twin	Y	\$49.00
873960	A Series ProStep PL	900mm Aluminium Extrusion	Photolum.	Y	\$52.50
873961	A Series ProStep PL	1200mm Aluminium Extrusion	Photolum.	Y	\$62.50
873962		900mm Kit (Grit)	Black		\$79.90
873963		900mm Kit (Grit)	Yellow		\$79.90
873964		900mm Kit (Grit)	Grey		\$79.90
873965		900mm Kit (Grit) for ProStep TS	Black		\$82.50
873966		900mm Kit (Grit) for ProStep TS	Yellow		\$82.50
873967		900mm Kit (Grit) for ProStep TS	Grey		\$82.50
873968		1200mm Kit (Grit)	Black		\$109.00
873969		1200mm Kit (Grit)	Yellow		\$109.00
873970		1200mm Kit (Grit)	Grey		\$109.00
873971		1200mm Kit (Grit) for ProStep TS	Black		\$115.00
873972		1200mm Kit (Grit) for ProStep TS	Yellow		\$115.00
873973		1200mm Kit (Grit) for ProStep TS	Grey		\$115.00
873974		900mm Kit (Rubber)	Black		\$17.90
873975		900mm Kit (Rubber)	Yellow		\$17.90
873976		900mm Kit (Rubber)	Grey		\$17.90
873977		900mm Kit (Rubber) for ProStep TS	Black		\$19.90
873978		900mm Kit (Rubber) for ProStep TS	Yellow		\$19.90
873979		900mm Kit (Rubber) for ProStep TS	Grey		\$19.90
873980		1200mm Kit (Rubber)	Black		\$24.90
873981		1200mm Kit (Rubber)	Yellow		\$24.90
873982		1200mm Kit (Rubber)	Grey		\$24.90
873983		1200mm Kit (Rubber) for ProStep TS	Black		\$27.50
873984		1200mm Kit (Rubber) for ProStep TS	Yellow		\$27.50
873985		1200mm Kit (Rubber) for ProStep TS	Grey		\$27.50

Note: The Carborundum surfaces are considerably more expensive because they offer a substantially greater level of traction.

Part No.	Name	Description	Colour/Style	NCC	Price (EX GST)
873988	ProStep VL	900mm Extrusion + Vinyl Insert	Yellow	N	\$34.90
873989	ProStep VL	900mm Extrusion + Vinyl Insert	Grey	N	\$34.90
873990	ProStep VL	900mm Extrusion + Vinyl Insert	Black	N	\$34.90
873991	ProStep VL	1200mm Extrusion + Vinyl Insert	Yellow	N	\$44.90
873992	ProStep VL	1200mm Extrusion + Vinyl Insert	Grey	N	\$44.90
873993	ProStep VL	1200mm Extrusion + Vinyl Insert	Black	N	\$44.90
873994	A Series ProStep VL	900mm Extrusion + Vinyl Insert	Yellow	Y	\$37.50
873995	A Series ProStep VL	900mm Extrusion + Vinyl Insert	Grey	Y	\$37.50
873996	A Series ProStep VL	900mm Extrusion + Vinyl Insert	Black	Y	\$37.50
873997	A Series ProStep VL	1200mm Extrusion + Vinyl Insert	Yellow	Y	\$49.00
873998	A Series ProStep VL	1200mm Extrusion + Vinyl Insert	Grey	Y	\$49.00
873999	A Series ProStep VL	1200mm Extrusion + Vinyl Insert	Black	Y	\$49.00
874000	ProStep SL	900mm Extrusion + Carborundum Insert	Yellow	N	\$29.00
874001	ProStep SL	900mm Extrusion + Carborundum Insert	Grey	N	\$29.00
874002	ProStep SL	900mm Extrusion + Carborundum Insert	Black	N	\$29.00
874003	ProStep SL	1200mm Extrusion + Carborundum Insert	Yellow	N	\$34.90
874004	ProStep SL	1200mm Extrusion + Carborundum Insert	Grey	N	\$34.90
874005	ProStep SL	1200mm Extrusion + Carborundum Insert	Black	N	\$34.90
874006	A Series ProStep SL	900mm Extrusion + Carborundum Insert	Yellow	Y	\$32.50
874007	A Series ProStep SL	900mm Extrusion + Carborundum Insert	Grey	Y	\$32.50
874008	A Series ProStep SL	900mm Extrusion + Carborundum Insert	Black	Y	\$32.50
874009	A Series ProStep SL	1200mm Extrusion + Carborundum Insert	Yellow	Y	\$37.50
874010	A Series ProStep SL	1200mm Extrusion + Carborundum Insert	Grey	Y	\$37.50
874011	A Series ProStep SL	1200mm Extrusion + Carborundum Insert	Black	Y	\$37.50
874012	A Series ProStep Highlight	900mm Extrusion + Fibreglass Insert	Yellow	Y	\$99.00
874013	A Series ProStep Highlight	900mm Extrusion + Fibreglass Insert	Grey	Y	\$99.00
874014	A Series ProStep Highlight	900mm Extrusion + Fibreglass Insert	Black	Y	\$99.00
874015	A Series ProStep Highlight	1200mm Extrusion + Fibreglass Insert	Yellow	Y	\$115.00
874016	A Series ProStep Highlight	1200mm Extrusion + Fibreglass Insert	Grey	Y	\$115.00
874017	A Series ProStep Highlight	1200mm Extrusion + Fibreglass Insert	Black	Y	\$115.00

Note: Extrusion and inserts above come complete with screws and screw anchors.

ANTI-SLIP ANGLED PLATES

High quality carborundum material rated to R13 is perfect for when the use of Stair Nosings is not practical, such as on the rungs of ladders or when the priority is performance at minimal cost.

Heavy duty, epoxy coated and UV stabilised, the plates come with screws and pre-drilled holes ready to be installed, and extends 25mm. Temperature resistant from -40°C to 90°C.

Surface tested in accordance with and exceeds AS/NZS 4586:2004.

STANDARD PACKAGE: 1

Part No.	Dimensions	Price (EX GST)
870761	50 x 900mm	\$84.90
870762	50 x 1200mm	\$109.00
870763	75 x 900mm	\$109.00
870764	75 x 1200mm	\$129.00
870765	100 x 900mm	\$139.00
870766	100 x 1200mm	\$169.00

