

Engineered Anchor Range



fall protection experts:

height safety | confined space | industrial rescue

Engineered Anchor Range



Structural Mount

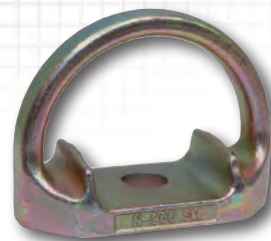
Model #	Description	Permanent	Temporary	Removable	Anchor Rating
2100101	Saflok® Toggle Anchor		✓		22kN
2101630	D-ring Anchor, with anchorage plate	✓			22kN
9501683	D-ring Anchor	✓			22kN



2100101



2101630



9501683

ANCHORS FOR EVERY APPLICATION

An anchorage provides a secure point of attachment for a personal fall arrest, restraint, work positioning or rescue system that can safely withstand the forces that each of these systems requires. The appropriate type of anchorage varies by industry, the job being performed, the type of installation and the structure available.

Concrete Mount

Model #	Description	Permanent	Temporary	Removable	Anchor Rating
2100085	Saflok® Concrete Wedge Anchor		✓		22kN
2101004	Concrete Detent Anchor	✓		✓	22kN
2104560	Concrete D-ring Anchor	✓	✓		22kN



2100085



2101004



2104560

Roof Mount

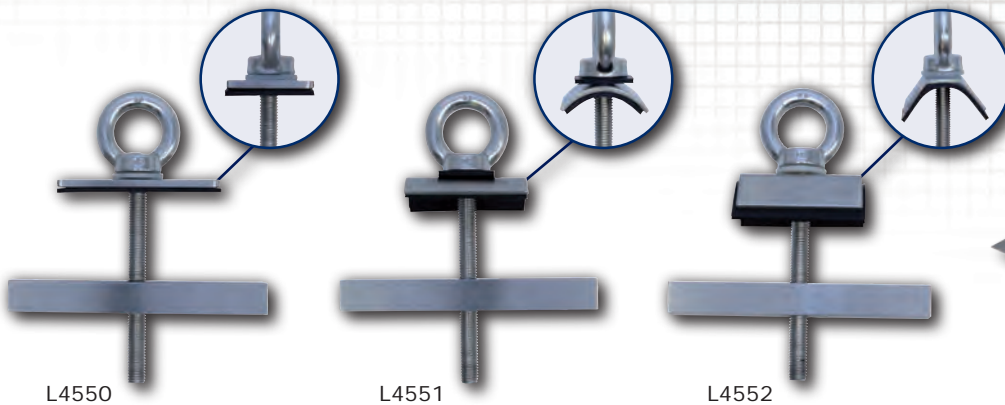
Model #	Description	Permanent	Temporary	Removable	Anchor Rating
L4543	Purlin Mounted Anchor, for steel roofs	✓			15kN
L4544	Truss mounted Anchor, for steel or tiled roofs	✓			15kN
L4548	Multipurpose Surface Mounted Anchor	✓			15kN
L4550	Low Profile Purlin Mounted Anchor, flat pan application	✓			15kN
L4551	Low Profile Purlin Mounted Anchor, corrugated iron application	✓			15kN
L4552	Low Profile Purlin Mounted Anchor, spandek application	✓			15kN



L4543



L4544



L4550

L4551

L4552



L4548

For details of tested and approved roof types, please contact Capital Safety Systems Engineers



Concrete/Steel Mount

Model #	Description	Permanent	Temporary	Removable	Anchor Rating
AJ720A	Concrete Anchor	✓			22kN
AM210	Fixed Anchorage Plate	✓			15kN
AM211	Fixed Anchoring Ring	✓			15kN



AJ720A

AM210



AM211



An anchorage and the structure to which it is attached must be capable of supporting a load of 15kN in the direction of loading for a single person attached to the anchorage, or 21kN for two persons as per the requirements of AS/NZS 1891.4.

Structural Strength: Capital Safety cannot warrant the structure. If in doubt, consult an engineer to verify the structural adequacy prior to installation.

Refer to our Product Information Sheets for further information on each individual anchor.

Other Specialised Anchors also available from Capital Safety



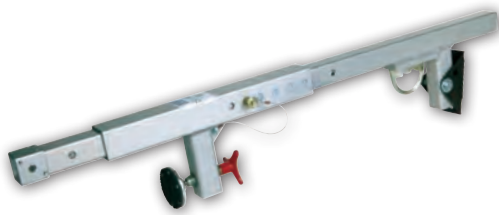
Freestanding Counterweight Anchor

Non-penetrating design, the freestanding counterweight anchor provides a tie-off point for personnel performing work on flat roofs or structures.



Mobi-Lok™ Self Contained Vacuum Anchor

The Mobi-Lok™ provides a non-penetrating anchor point for attachment to smooth, non-porous surfaces such as aircraft, railway cars and tanks.



Door/Window Jamb Anchor

Designed to install between the vertical sides of a door or window frame to provide a non-penetrating anchor point.



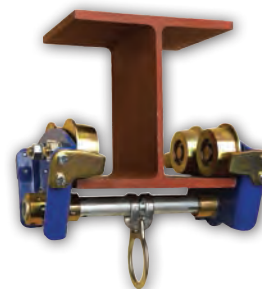
Rail Dog® Rail Anchor

Provides a non-penetrating mobile anchor point for railway or crane rail applications.



Glyder™ 2 Sliding Beam Anchor

Provides a non-penetrating anchor point for structural steel such as I-beams that slides across the beam on its wear pads and follows the worker as they walk along the beam, can be used overhead or at your feet.



Beam Trolley Anchor

Provides a robust non-penetrating overhead anchor point for structural steel such as I-beams that rolls across the beam on its wheels and follows the worker as they walk below the beam.