



EYE AND FACE PROTECTION





Disclaimer: Not all items that appear in this catalogue are ex stock. Please refer to your Sperian price list for pricing and availability. Products are subject to change without notice.



Contents

GENERAL INFORMATION		IPL EYEWEAR	
> Standards and Safety	4	> I-Block® II	20
> Product Selection	5	> Lightspeed II™	20
> Lens Variations	5	> LGF & XC IPL Eyewear	20
> Lens Coatings and Chemical Resistance	6	> Spectrashield™	20
SAFETY EYEWEAR		> IPL-Aid™	21
> Polysafe Plus™	6	> Laser-Aid™	21
> A700	7	> Derm-Aid™	21
> A900	7	> LED-Aid™	21
> Fuse®	8	SAFETY WHEN WELDING 22	
> Prevail™	8	WELDING TERMS 23	
> Ignite™	9	FEATURES OF DIFFERENT WELDING HELMETS 24	
> Protégé®	9	THE RIGHT PROTECTION FOR EVERY WELDER	
> XC®	10	> Helmet selection and application chart	25
SAFETY GOGGLES		EXPERT RANGE 26	
> Flex Seal®	11	> Sperian Optrel® Satellite	26
> Maxx-Pro®	12	> Sperian Optrel® Orion	27
> Strategy®	13	> Sperian Optrel® Miraplus	27
SPECIALTY EYEWEAR		> Sperian Optrel® OS100	28
> Specialty Eyewear Klip Lift Specs	14	PROFESSIONAL RANGE 29	
FACE SHIELDS/VISORS		> Sperian Optrel® P450 Tribe™	29
> Bionic® Face Shield	15	> Sperian Optrel® OSC	30
> Bionic® Electric Arc Visor	16	> Sperian Optrel® Nova	30
> Forestry Visor	16	> Sperian Optrel® Galaxy	31
EYEWEAR ACCESSORIES		ACCESSORIES 32	
> Cleaning Products/Eyewear Cases	17	> Helmet accessories to suit all Sperian Optrel® Welding Helmets	32
> Anti Fog Wipes	17	SPARE PARTS 32	
EYEWASH		> Sperian Optrel® Miraplus	32
> Personal Eyewash Bottles	18	> Sperian Optrel® Orion	33
LASER EYEWEAR		> Sperian Optrel® OSC	33
> Sperian Milan™	19	> Sperian Optrel® Satellite	33
> Sperian Millenia™	19	> Sperian Optrel® p450 Tribe	34
> Flex Seal®	19	> Sperian Optrel® OS100™ AUS	34
> LGF Full view	19	> Sperian Optrel® Galaxy High Impact	34
> XC®	19		
> Encore™	19		

Comprehensive range

Sperian Protection manufactures and markets a complete line of eye and face protective equipment, including eyewear, goggles and faceshields, eyewash, laser eyewear and welding helmets.

These products have been created in response to market demand for comfort, design, practicality and fashion. Where indicated, products are manufactured and approved in accordance with Australian and New Zealand Standards.

This comprehensive range meets most safety needs and expectations in the workplace today. Comfort is the key, since workplaces demand more comfortable and lighter weight eyewear, goggles and welding helmets. With cutting edge style, and high protection coverage the Sperian range delivers high quality products for all business segments and applications.



The Australian & New Zealand standards are a constant source of information and detail appropriate eyewear test methods, markings and packaging requirements.

Below is a list of relevant eyewear standards for reference. You should also consult your local government regulatory authority for details on codes of practices and requirements for the use of safety eyewear in your facility.

AS/NZS 1336:1997 Recommended practices for occupational eye protection

AS/NZS 1337:1992 Eye Protectors for Industrial applications

AS/NZS 1337.4:2004 Personal Eye protection, filters and eye-protectors against laser radiation (laser eye protectors)

AS/NZS 1337.5:2004 Eye protectors for adjustment work on lasers and laser systems (laser adjustment eye protectors)

AS2228.1: 1992 Spectacles – Spectacle lenses

AS/NZS 1338.1:1992 Filters for eye protectors – Protection against radiation generated in welding and allied operations

AS/NZS 1338.2:1992 Filters for eye protectors – Protection against ultraviolet radiation

AS/NZS 1338.3:1992 Filters for eye protectors – Protection against infra-red radiation

IMPORTANT SAFETY CONSIDERATIONS

An eyewear safety program should be introduced into your workplace, where workers are exposed to recognised risks. Areas of risk may include the following applications: Using grinding machines, wood working, hammering, wire and brick cutting, chemical processing, welding, cutting, metal casting, road work, coal handling timber sanding and outdoor work to name a few.

These hazards can come in the form of flying particles, liquid splashes, airborne dusts, sunglare, glare from visible radiation, and non-ionising radiation. Forms of protection include engineering controls, for example, screens (fixed or mobile) or PPE including impact resistant protective eyewear, goggles, face shields and welding lenses.

Eye protectors should be an individual issue (wherever practical) to ensure the correct fit, and protection for the workers environment. Correct storage and cleaning of the protector prolongs life and ensures the continued protection of the eyewear. Replacement should be when usage, accidental damage or age has resulted in deterioration of the properties of the eye protectors.

Using the correct protective eyewear or face protection could save your sight, or your life!

Product Selection

The fragile and vulnerable human eye is prone to damage from many types of industrial hazards. A list of hazards encountered in occupational applications has been compiled and matched with appropriate products found in this catalogue.

CATEGORY	HAZARD	SOLUTION
MECHANICAL & GENERAL HAZARD Automotive plants, general manufacturing and construction sites are potentially hazardous workplaces, and present many risks to eye safety mainly from flying particles (large & small), dusts, aerosols, sprays and sharp objects.	Outdoor work: Reflection, outdoor sun glare, solid particles	XC [®] : Dark grey or Silver mirror lens Protégé: Grey Lens Ignite: Grey Lens A700: Grey Lens A900: Grey or Silver Mirror lens
	Outdoor work: For low light:	XC [®] : Light Mirror or Amber lens Prevail™: Light Mirror Lens
	Finishing: Painting related hazards (dust, liquid, chemical particles, solid particles)	Flex Seal[®]: Indirect vented goggles in clear Maxx Pro: Indirect vented goggles in clear Strategy[®]: Indirect Vented or Closed Vent Clear Anti Fog
	General industry: Flying particles, dusts, aerosols, sprays and sharp objects	XC [®] : Clear Hard Coat/Anti Fog lens Flex Seal[®]: Clear goggle Protégé: Clear Hard Coat/Anti Fog lens Ignite: Clear Hard Coat/Anti Fog lens A700: Clear Hard Coat/Anti Fog lens A900: Clear Hard Coat/Anti Fog lens Prevail™: Clear Hard Coat lens Strategy[®]: Clear Anti Fog lens
	Construction: Plaster, dust, solid particles, indoor & outdoor glare	XC [®] : Clear/Grey Hard Coat lens Fuse[®]: Clear/Grey Hard Coat lens Protégé: Clear/Grey Hard Coat lens Ignite: Clear/Grey Hard Coat lens A700: Clear/Grey Hard Coat lens A900: Clear/Grey Hard Coat lens
ELECTRICAL Electricity is our means of receiving light, heat and information. People working with electricity must be aware of the constant potential dangers and be properly protected against eye injuries.	Standard electrical work: UV/Sparks	XC [®] : Clear Anti Fog or Silver mirror lens
	Utility work/Arc Flash Protection	Bionic [®] Electric Arc visor
CHEMICAL HANDLING Incidents continue to occur in various industries that use highly hazardous chemicals which may be toxic, reactive, flammable, explosive, or a combination. Any chemical (liquid, dust, vapor, gas, aerosol or mist) can contact and enter the eye. Hazardous chemicals present physical or health threats to workers in clinical, industrial and academic laboratories. Exposure to hazardous chemicals makes the use of specific eyewear compulsory.	Toxic Chemicals/Painting: Projection of toxic materials	Flex Seal[®]: Indirect vented goggles in clear Maxx Pro: Indirect vented goggles in clear Strategy[®]: Closed Vent goggles in clear
	Health Care/Laboratory environment: Potential exposure to toxic and/or contaminated materials	XC [®] : Clear Anti Fog lens Protégé: Clear Anti Fog lens A700: Clear Anti Fog lens A900: Clear Anti Fog lens
WELDING Both visible and invisible radiation is produced when welding or cutting. Due to the interaction with the metal, high levels of hazardous ultraviolet and infrared radiation (secondary radiation) are produced. This radiation is often reflected from the metal into the work area. Radiation from these processes can seriously burn or damage the eye. The optical filter protects the eye from dangerous radiation and reduces glare generated by visible light, whilst allowing excellent vision.	Welders Assistant: Exposure to ultraviolet and infrared radiation.	Flex Seal[®] Shade 5: Indirect vented goggles Klip Lift filter lens eyewear
	Arc welding, MIG/MAG & TIG welding: Infrared emissions and projections of small metal particles.	Bionic [®] : Shade 3 or 5 face shield Optrel[®] Satellite OSE: Welding helmet Optrel[®] Miraplus OSE: Welding helmet Optrel[®] Orion OSE: Welding helmet Optrel[®] OSC: Welding helmet Optrel[®] P450 Tribe: Welding helmet
	Welding & grinding	Optrel[®] Galaxy High Impact: Welding helmet Optrel[®] Satellite OSE: Welding helmet
LASERS Laser is an acronym for Light Amplification by Stimulated Emission of Radiation. A laser beam is a highly concentrated energy source, which can cause serious damage to the eye including loss of sight.	Direct beam view, flat surface, specular reflection or diffuse reflection.	Polymer: Laser eyewear Laminated Glass: Laser eyewear
FURNACE WORK & GLASS BLOWING	High glare & IR/UV	Klip Lift filter lens eyewear

Lens Variations

Sperian Protection provides customers with a variety of lens options to suit a range of applications. Every lens is made from anti-scratch coated polycarbonate, and absorbs 99.9% of Ultra Violet radiation. Optional Anti-Fog is also available.



CLEAR
 For indoor use where eye protection is required against most commonly encountered hazards.



GREY
 For outdoor use when sunlight and glare can cause eye fatigue.



DARK GREY
 For outdoor use where very bright sunlight and extreme glare can cause eye fatigue.



HDL YELLOW
 Indoor and outdoor lens which provides high visibility and good contrast in low light conditions.



LIGHT MIRROR
 High performance lens for indoor and outdoor use to reduce artificial and sunlight glare.



SILVER MIRROR
 For outdoor use when bright sunlight and glare can cause eye fatigue.



WELDING FILTER
 Welding filters provide IR (infra red) and UV (Ultra Violet) protection in welding applications



COBALT BLUE
 Cobalt Blue lenses provide IR & UV protection and are typically used in furnaces, glass blowing and other high heat & high glare applications

Lens Coating Chemical Resistance.



Sperian has developed proprietary coatings to meet the demands of even the most challenging work environments. Anti-fog coating offers superior performance under the most extreme conditions and will not wear off after repeated cleanings. It is permanently bonded to the lens which helps it retain its anti-scratch, anti-static and UV protection properties. Hard Coat, one of the toughest siloxane-based coatings in the world, is also permanently bonded to the lens and offers superior scratch and chemical resistance.

Chemical	Hard Coat	Anti-fog
Acetone	Y	N
Ammonia 10%	Y	Y
Benzene	Y	N
Butanol	Y	Y
Butyl Acetate	Y	N
CarbonTetrachloride	Y	Y
Cyclohexanol	Y	N
Diethylether	Y	Y
Ethanol	Y	Y
Ethylene Glycol	Y	Y
Formic Acid 30%	Y	Y
Petrol (normal)	Y	Y
Petrol (super)	Y	N
Hydrofluoric Acid	•	Y
Hydrochloric Acid 20%	Y	Y
Isopropyl Alcohol	Y	•
Methanol	Y	Y
Methylene Chloride	Y	N
Potassium Carbonate 30%	Y	Y
Sodium Carbonate 30%	Y	Y
Sulfuric Acid 50%	Y	Y
Toluene	Y	N
Trichloroethylene	Y	N
Xylene	Y	N

KEY

- Y** Resistant
- Limited resistance
- N** Not resistant

Wrap around spectacle providing visitor protection.



The Polysafe™ Plus is designed to be used as a visitors spectacle, and can also fit over the top of most prescription eyewear. The Polysafe™ Plus is also a great home handyman spec and can be relied on to protect you when you need it most.

Suggested Applications:

Maintenance, light/heavy manufacturing, transport, construction, medical, woodworking, etc.

POLYSAFE™ PLUS WRAP AROUND VISITORS SPECTACLE



The Polysafe™ offers a wide field of vision and fits easily over most prescription eyewear.

- > Fantastic visitor spectacle.
- > Wide viewing area with excellent coverage.
- > Can be worn over most prescription eyewear.

Technical Data

Weight:	40 grams.
Material:	Polycarbonate.
Impact Protection:	Medium.
Approvals:	AS/NZS 1337, Licence No: SMK 2209

Style	Part No.	Frame Colour	Lens Colour	Lens Coating
	745002	CLEAR	CLEAR	(NO LENS COATING)

Protection and style for less.



The A700 offers extraordinary value whilst still providing sporty style and protection. The lightweight wrap-around 9-base lens design provides substantial coverage and a distortion-free 180° field of vision, while the universal nose bridge and soft temple tips provide a comfortable fit. When price and style

matter, the A700 is a must have in your safety eyewear lineup.

Suggested Applications:

Maintenance, light/heavy manufacturing, transport, construction, medical, woodworking, etc.

Style at a great price.



The A900 Series is an ultra-lightweight spec and features superior style at an intelligent price. With a sports wrap-around dual lens the A900 provides style, comfort and the protection you expect from the world leader in personal protective equipment.

Suggested Applications:

Maintenance, light/heavy manufacturing, transport, construction, medical, woodworking, etc.

A700 PROTECTION, COMFORT, VALUE



The A700 provides value whilst combining sports styling with high protection and comfort.

- > Exceptional value, comfort & protection.
- > Universal nose bridge and soft temple tips for all-day comfort.
- > Fashionable sports styling and lightweight design.
- > 9 base wrap around lens provides close to the face protection.

Technical Data

Weight: 21.6 grams.
 Material: Polycarbonate.
 Impact Protection: Medium.
 Approvals: AS/NZS 1337, Licence No: SMK 0797.

Style	Part No.	Frame Colour	Lens Colour	Lens Coating
	1015361AN	CLEAR	CLEAR	HARD COAT
	1015360AN	CLEAR	CLEAR	ANTI-FOG
	1015362AN	GREY	GREY	HARD COAT
	1015351AN	GREY	GREY	ANTI-FOG

A900 ATTENTION GRABBING STYLE



Following the latest trends in sunglass styles, this great looking safety eyewear is sure to get plenty of attention. Attractive, comfortable, sports styling and a light weight frame make this affordable series a smart choice.

- > Sports styling with distortion free 180 degree field of vision.
- > Non slip rubber nose piece and soft padded temple tips.
- > Affordably priced.

Technical Data

Weight: 21.2 grams.
 Material: Polycarbonate.
 Impact Protection: Medium.
 Approvals: AS/NZS 1337, Lic No: SMK 0797.

Style	Part No.	Frame Colour	Lens Colour	Lens Coating
	A900AN	BLACK	CLEAR	HARD COAT
	A901AN	BLACK	CLEAR	ANTI FOG
	A902AN	BLACK	TSR GREY	HARD COAT
	A903AN	BLACK	TSR GREY	ANTI FOG
	A904AN	BLACK	SILVER MIRROR	HARDCOAT

Where style meets comfort.



The Fuse® offers exceptional coverage and features a tough 9-base wrap around lens providing optimum vision. The lightweight gun metal grey frame has adjustable nose pads and soft flexible temple tips for ultimate wearer comfort.

Suggested Applications:

Maintenance, light/heavy manufacturing, mining, transport, construction, medical, woodworking, etc.

Wrap around sport design.

Inspired by action and engineered for durability, the Prevail™ provides excellent protection in a wrap around sports style design with a comfortable light weight frame.

The compact wrap around design provides side impact protection without the need for side shields.

Lenses reduce glare from both natural and artificial light, great for a variety of indoor/outdoor applications.

Polycarbonate lens offers 99.9% UV protection and Hard Coat lens models provide resistance to scratches.

Suggested Applications:

Maintenance, light/heavy manufacturing, mining, transport, construction, medical, woodworking, etc.

FUSE® SPORTY METAL FRAME SAFETY EYEWEAR



PREVAIL™ WRAP AROUND SPORTS DESIGN



The Fuse® provides workers with comfort, style and protection.

- > Gunmetal coloured frame with exceptional coverage.
- > Nickel free frame prevents reactions in those sensitive to nickel.
- > Hinge stoppers on temples prevent temple tips from touching lenses.
- > Soft adjustable nose bridge for comfort and grip.
- > Includes adjustable break away neck cord.

Technical Data

Weight: 25.5 grams.
 Material: Polycarbonate lens with metal frame.
 Impact Protection: Medium.
 Approvals: AS/NZS 1337, Licence No: SMK 02742.

Style	Part No.	Frame Colour	Lens Colour	Lens Coating
	11150800AN	GUN-METAL GREY	CLEAR	HARD COAT
	11150801AN	GUN-METAL GREY	GREY	HARD COAT
	11150804AN	GUN-METAL GREY	SILVER	MIRROR

The Prevail™ provides close to the face protection whilst providing workers with a fashionable spec they will want to wear.

- > Popular sporty design which encourages employee compliance.
- > Durable nylon frame with universal nose bridge.
- > Includes adjustable break-away neck cord.

Technical Data

Weight: 35 grams.
 Material: Polycarbonate lens with nylon frame.
 Impact Protection: Medium.
 Approvals: AS/NZS 1337, Licence No: SMK 2209/1.

Style	Part No.	Frame Colour	Lens Colour	Lens Coating
	763502	BLACK	CLEAR	HARD COAT
	763562	BLACK	GREY	HARD COAT
	762782	BLACK	LIGHT MIRROR	MIRROR
	762972	BLACK	SILVER	MIRROR

The latest frameless style in superior eyewear protection.



The Ignite delivers exceptional comfort, protection and style in a lightweight, sleek, frameless design. With its dual nine-base, wrap-around unilens, the Ignite delivers sport-styling with close to-the-face coverage for when you need it most.

Suggested Applications:

Maintenance, light/heavy manufacturing, transport, construction, medical, woodworking, etc.

Sports styling with lightweight comfort and a flexible design.



Designed with Sperian's proprietary Floating Lens™ Technology, an expandable wrap-around brow, soft temple tip pads and molded rubber nose pads, the Protégé provides workers with exceptional comfort and flexible style.

Suggested Applications:

Maintenance, light/heavy manufacturing, transport, construction, medical, woodworking, etc.

IGNITE™ SPORTS STYLED SAFETY EYEWEAR



The Ignite boasts “hot get noticed” style with maximum fit and comfort to get workers fired up about staying protected.

- > 9-base polycarbonate wrap-around lens for a distortion free view.
- > Bold temple style and light weight design for all day comfort.
- > 180 degree field of vision and close-to-the-face protection.
- > Soft adjustable nose bridge for all day comfort.
- > Unisex design appeals to a broad range of workers.
- > Includes adjustable break away neck cord.

Technical Data

Weight: 26.6 grams.
 Material: Polycarbonate lens with nylon frame.
 Impact Protection: Medium.
 Approvals: AS/NZS 1337, Licence No: SMK 0797.

Style	Part No.	Frame Colour	Lens Colour	Lens Coating
	1017080AN	RED/SILVER	CLEAR	HARD COAT
	1017081AN	RED/SILVER	CLEAR	ANTI-FOG
	1017082AN	RED/SILVER	GREY	HARD COAT
	1017083AN	RED/SILVER	GREY	ANTI-FOG

PROTÉGÉ® SPORTY FLOATING LENS DESIGN



Combines sports-styling with lightweight comfort. With the Protégé® workers get the protection they need with the comfort and style they want.

- > Proprietary floating lens design offers increased flexibility in fit.
- > Secure wrap-around brow expands to fit a wide range of users.
- > Ultra lightweight design.
- > Soft temple tip pads provide a secure fit.
- > Soft clear nose pads prevent slipping.

Technical Data

Weight: 27.5 grams.
 Material: Polycarbonate lens with nylon frame.
 Impact Protection: Medium.
 Approvals: AS/NZS 1337, Licence No: SMK 0797.

Style	Part No.	Frame Colour	Lens Colour	Lens Coating
	1015366	BLACK/ORANGE	CLEAR	HARD COAT
	1015364	BLACK/ORANGE	CLEAR	ANTI-FOG
	1015363	BLACK/ORANGE	GREY	HARD COAT
	1015353	BLACK/ORANGE	GREY	ANTI FOG

Setting the standard for extra coverage and comfort on the job.

Xtra Coverage – with a 9 base curve high coverage wrap around lens which offers exceptional peripheral vision along with complete lateral protection. Xtra Control – extendible arm length and pivot points at the temple allow the user to adjust the frame for the perfect facial fit. Xtra Comfort – featuring MMT® soft material on all parts of the frame which are in contact with the face, pressure points are relieved for extraordinary all day comfort.

The XC can be fitted with an RX insert for a more comfortable eye protection solution for wearers of prescription eyewear.

Suggested Applications:

Utilities, ship building and automotive manufacturers, light/heavy manufacturing, transport.



XC® X-TRA COVERAGE FOR X-TRA PROTECTION



XC® the difference is X-tra clear. X-tra coverage with an exceptional lens, X-tra Comfort featuring MMT - Multi Material Technology®, and X-tra Control with adjustability makes the XC® the number one choice in safety eyewear.

- > Optional metal RX carrier for wearers of prescription eyewear.
- > Soft nasal flanges conform to a variety of facial profiles.
- > MMT – Multi Material Technology for all day comfort.
- > Choice of 9 lens options.
- > Hard Coat or Anti Fog coatings to adapt to any environment.

Technical Data

Weight: 36 grams.
 Material: Polycarbonate lens with a plastic blue two-shot frame.
 Impact Protection: Medium.
 Approvals: AS/NZS 1337, License No: SMK2209.

Style	Part No.	Frame Colour	Lens Colour	Lens Coating
	10110950AN	BLUE	CLEAR	HARD COAT
	10111027AN	BLUE	CLEAR	ANTI-FOG
	10111026AN	BLUE	GREY	HARD COAT
	10111025AN	BLUE	GREY	ANTI-FOG
	10111026DGAN	BLUE	DARK GREY	HARD COAT
	10111023AN	BLUE	LIGHT MIRROR	MIRROR
	10111022AN	BLUE	SILVER	MIRROR
	10111024AN	BLUE	AMBER	HARD COAT
Replacement Lenses				
	10111013AN	N/A	CLEAR	HARD COAT
	10111016AN	N/A	GREY	HARD COAT
RX Insert				
	10111410	METAL	N/A	N/A

The first Industrial Goggle constructed with a silicone body for an individual perfect fit.

The most comfortable goggle ever. Featuring an indirect ventilation system and a fully adjustable lightweight, sturdy, flexible frame. Silicone makes the difference. Lightweight, flexible and able to provide the most airtight fit there is, silicone remains soft and supple and conforms to any facial profile for a snug and slip free fit. Large wrap around lens, which ensures clear panoramic vision, a must for regular goggle wearers, simple but perfect. The unique frame is designed to be compatible with prescription lenses and/or half mask respirators.

Suggested Applications:

Construction, General Industry, Finishing, Painting, Laboratory Environment, Welding (Shade 5).

FLEX SEAL® GOGGLE INDIRECT VENTED GOGGLE WITH SILICONE SEAL



The Flex Seal® offers the ultimate when it comes to individual fit, comfort and perfect panoramic vision, making the Flex Seal® the goggle for today's workers.

- > Silicone stays supple and comfortable even in extreme hot or cold.
- > Very comfortable to wear for long periods of time.
- > Personally adjustable frame for individual fit.
- > Large wrap around, high quality lens for clear, panoramic vision.
- > Can be worn over prescription eyewear.

Technical Data

Weight:	110 grams.
Material:	Polycarbonate lens, silicone seal and fabric strap.
Impact Protection:	Medium Impact, Splash, Molten Metal & Hot Solids.
Approvals:	AS/NZS 1337, Licence No: SMK 2209.

Style	Part No.	Frame Colour	Lens Colour	Lens Coating
	1011333AN	CLEAR	CLEAR	ANTI FOG
	1011382AN	GREY	GREY	ANTI FOG
	1011384AN	SHADE 5	SHADE 5	ANTI FOG





Superior optics and a goggle that workers will want to wear.

Compact, sleekly designed low profile safety goggle suited to many working environments.

Superior MMT – Multi Material Technology® construction conforms to most facial contours, allowing the wearer to experience unsurpassed comfort all day long.

Indirect venting, channels air over the lens, minimising fogging for unimpeded vision and increased comfort.

Suggested Applications:

Construction, maintenance, building, sanding, woodworking.

MAXX PRO®



The Maxx Pro® features a sleek, futuristic design that encourages employee compliance.

- > Toric lens gives superior optics & peripheral vision for all day use.
- > Low profile design fits with most hard hats & half face respirators.
- > Easy lens replacement system reduces cost.
- > Indirect vent system channels air over the lens minimising fogging.
- > Quick adjust fabric head strap for a comfortable secure fit.

Technical Data

Weight: 74 grams.
 Material: Polycarbonate lens, multi material face seal and fabric strap.
 Impact Protection: Medium Impact & Splash Resistance.
 Approvals: AS/NZS 1337, Licence No: SMK 2209.

Style	Part No.	Frame Colour	Lens Colour	Lens Coating
	1011072AN	BLUE/GREY	CLEAR	ANTI FOG
	1011072GYAN	BLUE/GREY	GREY	ANTI FOG
Replacement Lenses				
	1011070AN	N/A	CLEAR	ANTI FOG
	1011070GYAN	N/A	GREY	ANTI FOG

The economical choice in goggles when comfort, fit and protection still matter.

The Strategy® Goggle is an economical over the glass (OTG) goggle which offers value without compromising on protection.

With a powerful combination of innovative face hugging material and a rugged design that withstands the harshest environments, the Strategy® goggle provides protection, peace of mind and total comfort.

This is a goggle workers will want to wear.

Suggested Applications:

Construction, maintenance, building, sanding, woodworking, laboratory.

STRATEGY® LIGHTWEIGHT FLEXIBLE OTG GOGGLE



The Strategy® Goggle delivers both premium comfort and maximum protection at an affordable price.

- > Lightweight TPE body provides exceptional comfort and snug fit.
- > Closed vent or indirect vent with foam for fine particle protection.
- > Optical perfected lens with excellent peripheral vision.
- > Fits over most prescription eyewear.
- > Permanently bonded anti-fog lens.

Technical Data

Weight:	87 grams.
Material:	Polycarbonate lens, silicone seal and fabric or neoprene strap.
Impact Protection:	Medium Impact & Splash Resistance
Approvals:	AS/NZS 1337, Licence No: SMK 2209/1.

Style	Part No.	Frame Colour	Lens Colour	Lens Coating
	1016740	INDIRECT VENT WITH FOAM FABRIC STRAP GREY	CLEAR	ANTI FOG
	1015520	NO VENT NEOPRENE STRAP GREY	CLEAR	ANTI FOG



Quality Filter Lens Eyewear for glasses.

Suitable for attachment to safety eyewear Sperian's 870 Series Klip Lift filter lens eyewear offers fast and convenient vision enhancement for a wide range of industries. Whether you work in steel making, steel processing, welding and cutting facilities, foundries, or glass-making operations, you'll appreciate the convenience of Sperian's Lift Front filter lenses. These lenses can be quickly flipped down for observing a melt or a weld, and flipped back up again when not needed. Movement through a full 180° arc is possible, allowing the filter lenses to be raised or moved completely out of your line of vision.

Suggested Applications:

Furnace work, glass blowing, welding etc.

Quality Filter Lens Eyewear for hard hats.

Suitable for attachment to hard hats and bump caps, Sperian's 880 Series Klip Lift filter lens eyewear offers fast and convenient vision enhancement for a wide range of industries. Whether you work in steel making, steel processing, welding and cutting facilities, foundries, or glass-making operations, you'll appreciate the convenience of Sperian's Lift Front filter lenses. These lenses can be quickly flipped down for observing a melt or a weld, and flipped back up again when not needed. Movement through a full 180° arc is possible, allowing the filter lenses to be raised or moved completely out of your line of vision.

Suggested Applications:

Furnace work, glass blowing, welding etc.

870 SERIES KLIP LIFT SPECS



The 870 Series Klip Lift is suitable for safety glasses and is available in full lens or half lens.

- > Worn in conjunction with existing polycarbonate safety eyewear, quickly and easily converting them into furnace or laboratory viewing specs
- > Integral spring clip holds 870 series securely, without screws, fasteners or tools
- > Available in half lenses or full lenses in green welding shades 4,5,6 & 8 and cobalt blue shades 6 & 8.

32-0LFFB6-0001 FULL FRONT COBALT BLUE SHADE 6
 32-0LFFB8-0001 FULL FRONT COBALT BLUE SHADE 8
 32-00LFB6-0001 HALF FRONT COBALT BLUE SHADE 6
 32-00LFB8-0001 HALF FRONT COBALT BLUE SHADE 8
 32-0LFFW4-0001 FULL FRONT WELDING SHADE 4
 32-0LFFW5-0001 FULL FRONT WELDING SHADE 5
 32-0LFFW6-0001 FULL FRONT WELDING SHADE 6
 32-0LFFW8-0001 FULL FRONT WELDING SHADE 8
 32-00LFW4-0001 HALF FRONT WELDING SHADE 4
 32-00LFW6-0001 HALF FRONT WELDING SHADE 6
 32-00LFW8-0001 HALF FRONT WELDING SHADE 8

880 SERIES KLIP LIFT SPECS



The 880 Series Klip Lift is suitable for hard hats and is available in full lens or half lens.

- > Clips easily onto hard hat or bump cap brims
- > Worn in conjunction with existing safety eyewear
- > Quickly flip down to enhance vision then flip up when not needed
- > Integral spring clip holds 880 series securely, without screws, fasteners or tools
- > Available in half lenses or full lenses in green welding shades 4,5,6 & 8 and cobalt blue shades 3,4,6 & 8.

32-8LFFB3-0001 FULL FRONT COBALT BLUE SHADE 3
 32-8LFFB4-0001 FULL FRONT COBALT BLUE SHADE 4
 32-8LFFB6-0001 FULL FRONT COBALT BLUE SHADE 6
 32-8LFFB8-0001 FULL FRONT COBALT BLUE SHADE 8
 32-08LFB6-0001 HALF FRONT COBALT BLUE SHADE 6
 32-08LFB8-0001 HALF FRONT COBALT BLUE SHADE 8
 32-8LFFW4-0001 FULL FRONT WELDING SHADE 4
 32-8LFFW5-0001 FULL FRONT WELDING SHADE 5
 32-8LFFW6-0001 FULL FRONT WELDING SHADE 6
 32-8LFFW8-0001 FULL FRONT WELDING SHADE 8
 32-08LFW4-0001 HALF FRONT WELDING SHADE 4
 32-08LFW5-0001 HALF FRONT WELDING SHADE 5
 32-08LFW6-0001 HALF FRONT WELDING SHADE 6
 32-08LFW8-0001 HALF FRONT WELDING SHADE 8

The simplest and most comfortable face shield designed to handle any challenge.

The Bionic® face shield redefines a new level of technology in the face shield category. With over 15 design patents, the Bionic® face shield revolutionises the safety market. Its advanced ergonomic design combines superior protection and all day comfort with the kind of easy to use features that workers desire. Designed for workers by workers, the Bionic® face shield offers extended chin and top of head protection. With a large number of possible wearer positions, the highly adjustable headgear in the Bionic® visor tilts the visor nearer or farther from the face, depending on preference and application.

Suggested Applications:

Sanding, grinding, woodworking, welding, trimming, flash grinding, laboratory.

BIONIC® FACE SHIELD COMFORTABLE EFFICIENT HIGH IMPACT PROTECTION



The simplest and most comfortable face shield designed to handle any challenge. Revolutionary and designed for rugged jobs, it's tough where it has to be, yet extremely lightweight and balanced for all day comfort.

- > Extended top of head & chin protection & adjustable headband.
- > Dielectric design will not conduct electricity.
- > Hard hat adaptor sold separately. Compatible with MSA V Guard Elite & Protector Tuff Master hard hats.
- > Shade 3 & Shade 5 visors available for welding.
- > Easy lens replacement. Lenses are interchangeable between clear, electric arc and shaded welding visors, making the Bionic an extremely versatile face shield.

Technical Data

Weight:	360 grams.
Material:	ABS frame with polycarbonate visor.
Impact Protection:	High Impact & Splash Protection.
Approvals:	AS/NZS 1337, Licence No: SMK 2209.

1011623 BIONIC FACE SHIELD & CLEAR UNCOATED VISOR • **1011624** BIONIC FACE SHIELD & CLEAR COATED VISOR • **1011625** CLEAR UNCOATED REPLACEMENT VISOR • **1011627** CLEAR COATED REPLACEMENT VISOR • **1011628** SHADE 3 UNCOATED REPLACEMENT VISOR • **1011629** SHADE 5 UNCOATED REPLACEMENT VISOR
1015161 BIONIC HARD HAT ADAPTOR



Arc flash protection with all the features of the Bionic®



The Bionic® Electric Arc Visor is suitable for indoor and outdoor utility work where protection is required from low risk electric arc exposure. This visor should not be used for tasks where there is a risk of high energy arc flash.

Suggested Applications:

Indoor and outdoor utility work, circuit breaker work

on panelboards rated 240v and below, linesman/maintenance work for protection from low risk electric arc exposure and UV radiation.

Quality mesh visor which can be used with Earmuffs



The Forestry visor from Sperian is perfect for workers who require eye, face and hearing protection in applications such as chainsawing & brush cutting. The forestry visor is a mesh visor which can be fitted to a hard hat and also be worn in conjunction with any of the Howard Leight helmet earmuffs.

Suggested Applications:

Chainsawing, lawn mowing, brush cutting, tree lopping etc

BIONIC® ELECTRIC ARC VISOR LOW RISK FLASH PROTECTION



The Bionic® Electric Arc Visor protects against low risk electric arc flash and includes all the features of the standard Bionic® face shield.

- > Visor thickness 1.5mm
- > Dielectric design will not conduct electricity.
- > Fully adjustable ratchet headgear and headband.
- > Hard hat adaptor can be purchased separately and is compatible with MSA V Guard Elite & Protector Tuff Master hard hats.

Technical Data

Weight:	360 grams.
Material:	ABS frame with polycarbonate visor.
Impact Protection:	High Impact & Electric Arc Flash.
Approvals:	AS/NZS 1337 High Impact, Licence No: SMK 2209. No Australian/New Zealand Standard exists for electric arc flash protection. We recommend you consult EN166 and NFPA70E for information regarding suitable protection for arc flash at varying levels.

- 1011623 BIONIC FACE SHIELD & CLEAR UNCOATED VISOR
- 1015112 BIONIC ELECTRIC ARC REPLACEMENT VISOR
- 1015161 BIONIC HARD HAT ADAPTOR

FORESTRY VISOR



*Earmuff, hard hat and neck cover not included

Mesh visor which can be fitted to most hard hats to incorporate the Howard Leight® range of helmet earmuffs including Lightning®, Thunder®, Clarity®, Electro® or Impact™. The visor slots into Howard Leight hard hat adaptors which can then be fitted with helmet muffs.

- > Suits all Howard Leight helmet earmuffs.
- > Hard hat adaptors need to be the correct style to suit the hard hat.
- > Sun brim provides added protection from the sun.
- > Ratchet arm system allows visor to be lifted up and down as required.

Technical Data

Weight:	109.5 grams.
Material:	Mesh.

1017800 FORESTRY VISOR

Keep your safety specs in top condition, with Sperian's full range of cleaning products

From cleaning cloths to lens spray and tissues to lens cleaning stations. Sperian have a full range of cleaning products to ensure your safety eyewear is kept in mint condition.

Soft and hard cases are also available for handy storage options which will help prevent damage or scratching of your specs.

Suggested Applications:

Suitable for use with all plastic, glass and polycarbonate lenses and all types of lens coatings.

Eliminates lens fogging in humid work environments

With Sperian's Fog Eliminator Cloths, workers who wear safety eyewear, goggles or faceshields are better protected against the potentially dangerous temporary loss of vision that occurs when lenses fog up.

Available in convenient foil packets, Sperian's Fog Eliminator Cloths are easy to use, reusable and are safe for use on all types of lenses and lens coatings.

Suggested Applications:

Suitable for use with all plastic, glass and polycarbonate lenses and all types of lens coatings.

CLEANING PRODUCTS/SPEC CASES



Sperian offers a comprehensive range of cleaning products and eyewear accessories to keep your safety specs in top condition.

- > Full range of lens sprays, moist towelettes, tissues and a lens cleaning station.
- > Microfibre lens cleaning cloth also available.
- > Spec cases available in soft or hard.

1011379 CLEAR LENS TISSUES 500 TISSUES • **1011378** CLEAR 500ML SPRAY • **1011380** CLEAR DISPOSABLE STATION CONTAINING 500ML SPRAY & TISSUES • **1011332** CLEAR TOWELETTES BOX 100 EYECLOTH MICROFIBRE SPECTACLE CLEANING CLOTH
1013418 EYEWEAR CASE HARD • **1008060** EYEWEAR CASE SOFT

ANTI FOG WIPES



An effective way to eliminate lens fogging due to cold temperatures and moist or high humidity conditions.

- > For use on all plastic, glass and polycarbonate lenses.
- > Works better and lasts longer than sprays and wet towelettes.
- > Streak free and film free.
- > Non flammable, non toxic and alcohol free.
- > Multiple applications from each towelette.
- > Handy box packaging with pull down front acts as a dispenser.

Technical Data

Weight: 491.5 grams.

16779 ANTI FOG WIPES BOX 100



Personal Eyewash for Emergency Situations.

Sperian's saline personal eyewash products utilise a buffered saline solution, which is sterile and superior to tap water for emergency eye care. Unlike tap water that may contain contaminants that can further irritate or damage the eyes, saline solution is purified and physiologically balanced to pH and salinity of human tears. Saline solution is offered in factory sealed personal eyewash bottles. There is a 36* month shelf life on sterile personal eyewash bottles.

Suggested Applications:

Any emergency situation requiring flushing of the eyes.

* Shelf life determined by date of manufacture.
Always check product expiration date.

PERSONAL EYEWASH BOTTLES



For flushing or irrigating the eyes to remove loose foreign material, air pollutants or chlorinated water.

- > Saline solution superior to tap water for emergency eye care.
- > Easy open tamper resistant top is easily removed in an emergency.
- > Extended flow nozzles (16,32oz) & user-controlled volume delivery (1,4,8oz).
- > Active Ingredient: Sterile Water 99%.
- > Inactive Ingredients: sodium chloride, sodium phosphate dibasic, sodium phosphate monobasic.

32-000455-0000 EYESALINE SOLUTION 32OZ (946ML) BOTTLE

32-000454-0000 EYESALINE SOLUTION 16OZ (473ML) BOTTLE

32-000445-0000 EYESALINE SOLUTION 8OZ (236.5ML) BOTTLE

32-000452-0000 EYESALINE SOLUTION 4OZ (118ML) BOTTLE

32-000451-0000 EYESALINE SOLUTION 1OZ (20ML) BOTTLE

32-000460-0000 EYESALINE SOLUTION 16OZ (473ML)

SINGLE BOTTLE STATION

32-000461-0000 EYESALINE SOLUTION 32OZ (946ML)

SINGLE BOTTLE STATION

32-000462-0000 EYESALINE SOLUTION 32OZ (946ML)

DOUBLE BOTTLE STATION

The largest line of polymer and glass filter laser eyewear for many laser applications.



Sperian Protection offer two types of lenses in laser eyewear protection; polymer lenses and glass lenses.

> Polymer laser eyewear is designed to maximise visibility, whilst providing unsurpassed attenuation by narrowing the absorption band to the specific laser wavelengths.

> Glass technology laser eyewear is designed to withstand direct laser radiation for short durations. A combination of mineral glass, dielectrics and plastic materials are combined to maximise visibility, weight, and improve impact resistance. Sperian offer six different frame styles which can be fitted with different lenses to protect against many different types of lasers. The frame styles available include:

NEW SPERIAN MILAN™

The Milan™ is a new frame designed with fashion, style comfort and protection in mind. This eyewear is designed with wrap around lenses and sleek, contemporary frame styling with multiple adjustments that allow you to create a comfort fit.

Milan frame available with polymer lenses only.

LGF FULL VIEW

One piece impact resistant polycarbonate lens with integral molded sideshields offering a large protective area and unrestricted wide-angle viewing.

LGF frame available with polymer lenses only.

SPERIAN MILLENNIA™

Contemporary sports wrap around design, offering superior optics and a large unrestricted wide angle viewing area.

Millennia frames available with Polymer lenses only.

XC®

The XC® features a high coverage lens and soft nasal flanges that conform to many facial profiles. An RX insert is also optional.

XC frames available with polymer lenses only.

FLEX SEAL®

The most comfortable goggle ever, the Flex Seal® offers an individual fit, comfort and perfect panoramic vision. This goggle can be easily worn over prescription eyewear.

Flex Seal frame available with polymer lenses only.

ENCORE™

Contemporary styling featuring padded wire core temples for a secure fit. Available in small and large size, the Encore™ will fit over prescription eyewear.

Encore frames available with either glass or polymer lenses.

LASER EYEWEAR

Sperian Milan™



LGF Full view



Sperian Millennia™



XC®



Flex Seal®



Encore™



With 40 years of experience serving the laser community, Sperian Protection is the worldwide leader in laser protective eyewear, patient care products and specialty filters for industrial, military, communications, medical and R&D applications. Our frames are designed for comfort and style, matched with world-renowned dyes to maximise visibility and protection.

As the leader in manufacturing and design of laser and specialty filters, we bring you the best value and maximise protection in all the products we produce.

- > Wide range of frame styles to suit all applications.
- > Frame styles available to fit over RX eyewear.
- > Packaged in a hard case for easy care.

Technical Data

In order to make a recommendation on the type of lens suitable to your particular laser application, we will need to know the following information about the laser you require protection against:

- > Laser Type
- > Laser Wavelength (in nm)
- > Mode of the Laser (Continuous Wave, Single Pulse or Multiple Pulse)
- > Laser Output (Watts)
- > Total Exposure Time in Seconds (If known)

LIGHT SPEED™ II ADF TECHNOLOGY MAKES IPL WORK SAFE


* Available 2009

Sperian has taken Liquid Crystal technology from the aerospace and computer world and adapted it for use in safety eyewear. The result is the Light Speed™ technology that allows users to work more efficiently and safely in Intense Pulsed Light (IPL) environments.

- > New 37% larger viewing area & 21% lighter than previous model.
- > Filter reacts automatically to flash of IPL Device, protecting eyes.
- > Glare reduction factor 2 to 9, with permanent UV and IR protection.
- > Minimises headache and adverse effects associated with IPL glare.
- > Fits comfortably over most prescription eyewear.

Technical Data

Weight: 123 grams.

31-91900 LIGHT SPEED™ II AUTO DARKENING IPL EYEWEAR

IPL EYEWEAR PROTECTION AGAINST INTENSE PULSE LIGHT


Feather-weight frames with unparalleled comfort and lens technology protects the eyes against IPL.

- > Soft elastomer browguard cushions contact with the face.
- > Peripheral vision while offering superior coverage.
- > Adjustable temple length and lens inclination.

Style	Part No.	Description	Frame	Lens Colour
	31-9623	IPL EYEWEAR	LGF	GREEN
	31-9624	IPL EYEWEAR	LGF	DARK GREEN
	31-80133	IPL EYEWEAR	XC	GREEN
	31-80134	IPL EYEWEAR	XC	DARK GREEN

I-BLOCK® II LIGHT WEIGHT LASER RESISTANT PATIENT SHIELD


Ultra-light weight laser resistant patient shield for many laser applications.

- > Provides protection from 190 -11,100nm.
- > New, improved swivel adjustment.
- > Aluminum construction disperses heat, increasing patient comfort.
- > Covers orbital area of eye and allows access to bridge, brow and temples.
- > New improved swivel adjustment allows easy access to nasal area.
- > Increases patient comfort and provides easy access to facial area.

Technical Data

Weight: 17.1 grams.

31-7410 I-BLOCK® II

SPECTRASHIELD™


The Spectrashield™ is generally used with patients who prefer to have their eyes covered during an operation.

- > Made of lightweight alloy.
- > Protects against all lasers.
- > Adjustable nose piece and safety strap promote secure fit.
- > Adjustable to different pupillary distances (PD).

Technical Data

Weight: 134 grams.

31-7313 SPECTRASHIELD™ (WHITE) • **31-7308** SPECTRASHIELD™ (BLACK) **31-7311** SPECTRASHIELD™ REPLACEMENT FOAM (12 PIECES)

IPL-AID™ PATIENT CARE



For use with IPL devices and Microdermabrasion.

- > Uses include IPL devices and microdermabrasion.
- > For non-laser use only.
- > Latex-free and hypoallergenic.
- > Allows access to nose bridge, brow and temples.
- > Easy to apply and comfortable to wear.
- > Designed to protect most orbital sizes.
- > Tab for easy removal or repositioning.

Technical Data

Weight: 109 grams.

31-9300 IPL-AID (50 PAIR/BOX)

LASER-AID™ PATIENT CARE



For use with Lasers, LED, Microdermabrasion & more.

- > Safe for medical lasers with wavelengths between 190nm-11,000nm.
- > Latex-free and hypoallergenic.
- > Allows access to bridge, brow and temples.
- > Easy to apply and comfortable to wear.
- > Designed to protect most orbital sizes.
- > Tab for easy removal or repositioning.

Technical Data

Weight: 102 grams.

31-8300 LASER-AID (24 PAIR/BOX)

DERM-AID™ PATIENT CARE



For use with Microdermabrasion, Chemical Peels and Facials.

- > Non laser use including microdermabrasion, chemical peels and facials.
- > Easy peel adhesive.
- > Latex free and hypoallergenic.
- > Allows access to bridge, brow and temples.
- > Comfortable and easy to remove.
- > Tab for easy removal or repositioning.

Technical Data

Weight: 102 grams.

31-7300 DERM-AID (50 PAIR/BOX)

LED-AID™ PATIENT CARE



For use with LED, Low Powered Lasers, and Microdermabrasion.

- > LED's, low-powered lasers (<1 watt) IPL and microdermabrasion.
- > Protection level: (OD 4@190-10,600nm).
- > Latex-free and hypoallergenic.
- > Allows access to bridge, brow and temples.
- > Comfortable, easy to apply & designed to protect most orbital sizes.
- > Tab for easy removal or repositioning.

Technical Data

Weight: 102 grams.

31-8400 LED-AID (50 PAIR/BOX)

The protection of the individual welders health and safety along with maximum comfort are essential in ensuring that the correct welding helmet is manufactured for the welders everyday needs.

Purchasing and wearing protective products is seen as a necessary evil by most welders. Wearing the correct safety equipment is essential. Welders are subjected to various visible and invisible risks. Sperian Protection can help protect you against these risks.



EARS

Ears require particular protection against UV & IR radiation due to their thin skin covering. In addition, hearing protection products should be worn for certain welding procedures. With TIG welding, for example, approximately 121 dB is generated, which can lead to irritation and irreversible damage. The Howard Leight range including earplugs and the Lightning LON earmuff (which has been designed to be worn under a welding helmet) provides suitable hearing protection.

EYES

During welding, bright intensive light is generated which without adequate protection can lead to tired and red eyes. For this reason, the intensity of the welding arc must be reduced. This function is taken on by auto darkening filters, or passive shaded lenses. These welding lenses allow the welder to see the weld object whilst reducing the intensity of the arc and protecting the eyes.

Another great risk is presented by UV & IR radiation. The fact that the radiation cannot be detected by the naked eye lures many a welder into a false sense of security. Due to its intensity, even the briefest moment of exposure is enough to irritate the eyes and to seriously damage them in the long term. To be sure that the eyes are protected, a UV & IR filter that reliably and permanently reflects the radiation is required. In all Sperian welding protection products, great importance is attached to the permanent filtration of this radiation.

RESPIRATORY

Depending on the welding process and material, fine particles, smoke or poisonous vapours and gases may be released. In the short term, these substances usually lead to headaches, nausea and coughing. Without you noticing it, these can then result in serious illness and long-term damage. An analysis of the materials used and the welding processes in the working environment concerned should help you to find the right protection. Air fed filter units with particle filters can be used to minimise the risks of respiratory problems.

SKIN AND BODY

Burns and injuries caused by flying hot particles account for the most commonly caused accidents. UV & IR radiation also cause dangerous burns which can eventually result in skin cancer. Just a few minutes of exposure is enough to cause skin irritation and for this reason, Sperian Protection offer various accessories for the protection of the neck, chest and back of the head, which can be used in conjunction with our welding helmets.

HANDS AND HEAD

Welding generates hot particles and flux chippings which will cause burns to exposed parts of the body even though these particles are black in colour, they are still hot enough to cause skin burns. When welding, your hands need to be protected from these hot particles, and for this reason, Sperian Protection recommend using suitable gloves for welding applications.

In some working environments the welder may require head protection from the possibility of falling debris. For this type of situation, Sperian can offer a hard hat adaptor which allows the welding helmet to be fitted to a hard hat to protect the workers head whilst welding.

QUALITY CERTIFICATION

Despite all the risks, the welder should feel safe carrying out tasks and, above all, be able to complete demanding jobs with the peace of mind that they are fully protected. Thanks to state-of-the-art technology and research, Sperian Protection is able to protect the welder perfectly and reliably without restricting freedom of movement.

Wearing a welding helmet can reduce the risk of damage or injury to the eyes and face to a minimum. All Sperian welding helmets have been tested and are approved to Australian & New Zealand Standards AS/NZS 1337 & AS/NZS 1338 so you can be confident that when you purchase a Sperian welding helmet, you will be wearing a quality endorsed product which will keep you protected all day every day.

Delay, sensitivity and LCD are terms often used in the welding industry and are important to understand before attempting to select a welding helmet. Please review the following information covering some of the most important functions before you consider choosing the welding helmet that meets your requirements:

PASSIVE WELDING HELMETS

Passive welding helmets are those which contain permanently coloured glass. Passive helmets must be lowered before striking the arc and raised when not welding.

ACTIVE WELDING HELMETS

The term “active welding helmet” includes all welding helmets that are equipped with an Auto Darkening Welding Filter (ADF). A true active welding helmet is light weight, designed to accept an auto-darkening filter which takes into account correct eye to filter distance and alignment with consideration for correct balance and maximum field of view.

AUTO DARKENING FILTER (ADF)

The ADF, also called the cartridge, consists of a printed circuit board, electronic components, arc detection sensors, power supply, liquid crystal display LCD's and a UV & IR filter. This is the part of the helmet that automatically darkens when a welding arc is struck. Sperian Protection provides a wide range of ADFs with various features and shade protection options. These sealed units are produced to ensure longevity of life by reducing the possibility of ingress of fluid or dirt.

LIQUID CRYSTAL DISPLAY (LCD)

LCDs enable the user to see through the ADF both before and after the arc is struck. The LCD's used for this purpose are considered shutters. When the shutter is not energised the user can see through the viewing window. This is generally called the light state which is usually a shade 3 or 4. When the arc is struck the sensors trip an electric output which energises the LCD whereby causing the shutter to quickly close. This is called the dark state which can be a single shade such as 11 or a variable shade such as 9 through to 13. When the arc is stopped the LCD returns to the light state.

UV & IR FILTER

The UV & IR filter protects the welder from dangerous optical radiation in the UV & IR range. The UV & IR filter reflects and or absorbs the harmful radiation only allowing safe visible light to pass through to the welder's eyes. It is important to note that the UV & IR filter provides permanent protection regardless of whether the welding filter is in the dark or light state.

INSIDE COVER LENS

An inside cover lens is used to protect the back of the ADF from dirt and spatter. This thin plastic lens should be replaced when it becomes dirty and discoloured.

SENSORS

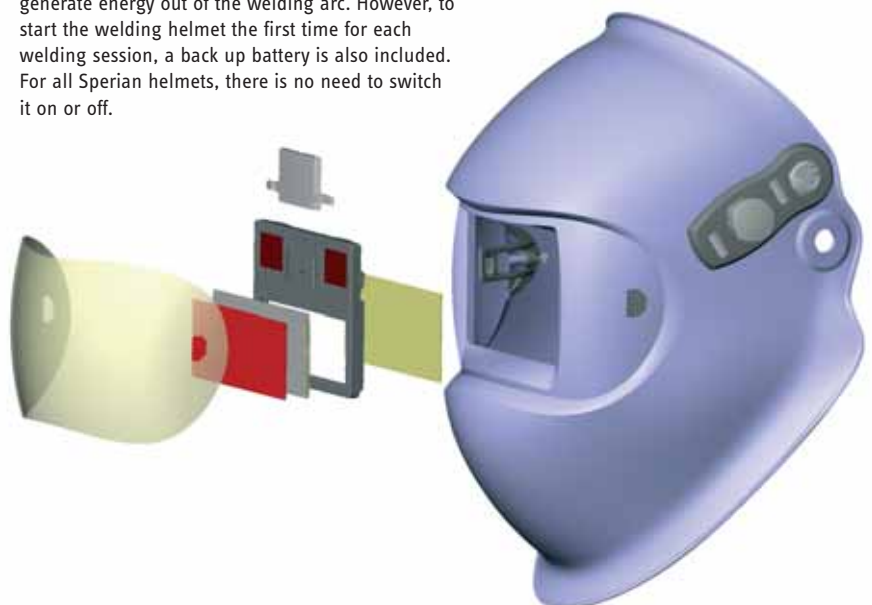
The welding arc is detected by the sensors. The sensors signal the electronics to darken the LCDs.

FRONT COVER LENS

The front cover lens is fitted on the front of the welding helmet. The welding lens or ADF is behind the cover lens and protected from impact, smoke and weld spatter. The front cover lens must be changed regularly when it becomes damaged or discoloured resulting in poor visibility. Sperian Protection provides a product which has a seal between the front cover lens and the ADF. This stops unnecessary ingress of fume or particulate from damaging both the ADF lens and also the welder.

SOLAR CELLS & BATTERIES

The power needed to operate the ADF can be guaranteed over different types of power supply. For all Expert and Professional helmets, the power during welding comes from the solar cells, which generate energy out of the welding arc. However, to start the welding helmet the first time for each welding session, a back up battery is also included. For all Sperian helmets, there is no need to switch it on or off.



SENSOR BAR/SLIDE

The sensor bar is used in conjunction with the sensors. The sensor bar helps to maximise or minimise the sensors angle of arc detection. It is important to be able to adjust the detection angle according to the welding application and environment. With the sensor bar you can reduce the detection angle from 120° to 60°. Limiting the sensor angle reduces the risk of the ADF from accidentally darkening from the light generated by bright shop lighting or other welders in the immediate vicinity.

SENSITIVITY FUNCTION

The sensitivity function allows you to adjust the sensitivity of the sensors to the welding process and also conditions in your work area. If bright lights or the arcs generated by nearby welders cause the ADF to prematurely darken, the sensitivity can be decreased to tune out the disturbance. If the filter fails to darken while attempting to weld at low amperages increase the sensitivity until the ADF operates properly at the required distance.

DELAY FUNCTION (DARK TO LIGHT)

Depending on the welding process, temperature and material, the welded material may continue to glow after the welding task. If the welding helmet quickly switches from dark to light after a long welding task, the welder may experience a bright glow for a short time. In this case adjust the delay to the slow setting. For spot or stitch welding switch the delay setting to fast so that the ADF quickly lightens allowing the welder to move rapidly to the next weld point.

SHADE LEVEL

The shade level specifies how much the cartridge darkens. It is usually given by the DIN (German industrial standard). A shade level is selected according to the welding process and current. The shade level also depends on the welder's eyes. The welder should be comfortable with the shade that is selected. The shade level recommendation table on page 25 gives indications for selecting the correct shade level.

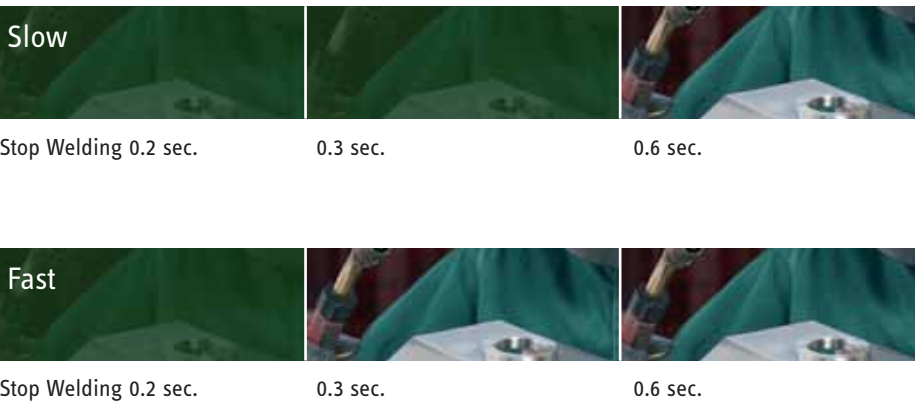
GRINDING MODE

If a helmet has this function, it means that the ADF can be fixed in the light state for the duration of the grinding process. This prevents the cartridge from darkening due to light pulses from grinding.

SENSOR BAR/SLIDE



DELAY FUNCTION (DARK TO LIGHT)



SENSITIVITY FUNCTION



SHADE LEVEL



GRINDING MODE



EXPERT

By experts for experts! The Expert range of optoelectronic welding helmets has been conceived especially for welding experts. The helmets are designed for a wide range of welding methods, to cater for the most diverse of needs and meet even the most discerning demands.

PROFESSIONAL

The optoelectronic welding helmets in the Professional range are ideal for professional welders who wish to take advantage of the comfort and benefits of a high-quality, active welding helmet.

Which helmet is suitable for me?

Use the shade level table below to see which helmet suits your application.

- 1 Select your welding application (left hand column)
- 2 Select the amperage range at which you will be welding (top row).
- 3 Match the appropriate shade level (at the top of each welding application) with the Spierian welding helmet model.
- 4 Check for functions such as Sensitivity, Delay and Grind in the detailed helmet descriptions within this catalogue.

EXPERT																										
Amperage range	1.5	6	10	15	30	40	60	70	100	125	150	175	200	225	250	300	350	400	450	500						
MMA	8								9				10				11				12		13		14	
	Optrel Satellite								Optrel Miraplus				Optrel Orion													
MAG	8								9				10				11				12		13			
	Optrel Satellite								Optrel Miraplus				Optrel Orion													
TIG					8				9				10				11				12		13		14	
					Optrel Satellite				Optrel Miraplus				Optrel Orion													
MIG heavy metals									9				10				11				12		13		14	
									Optrel Satellite				Optrel Miraplus				Optrel Orion									
MIG light metals Stainless, Al													10				11				12		13		14	
													Optrel Satellite				Optrel Orion									
Plasma cutting									9				10				11				12		13		14	
									Optrel Satellite				Optrel Orion													
Micro plasma welding	4		5		6		7		8		9		10		11		12		13							
			Optrel Satellite		Optrel Orion																					
Grinding									Optrel Satellite																	
									Optrel Satellite																	

PROFESSIONAL																										
Amperage range	1.5	6	10	15	30	40	60	70	100	125	150	175	200	225	250	300	350	400	450	500						
MMA	8								9				10				11				12		13		14	
									Optrel p450 Tribe / Optrel OSC				Optrel Galaxy High Impact / Optrel Nova													
MAG	8								9				10				11				12		13			
									Optrel p450 Tribe / Optrel OSC				Optrel Galaxy High Impact / Optrel Nova													
TIG					8				9				10				11				12		13		14	
					Optrel p450 Tribe / Optrel OSC				Optrel Galaxy High Impact / Optrel Nova																	
MIG heavy metals									9				10				11				12		13		14	
									Optrel p450 Tribe / Optrel OSC				Optrel Galaxy High Impact / Optrel Nova													
MIG light metals Stainless, Al													10				11				12		13		14	
													Optrel p450 Tribe / Optrel OSC				Optrel Galaxy High Impact / Optrel Nova									
Plasma cutting									9				10				11				12		13		14	
									Optrel p450 Tribe / Optrel OSC				Optrel Galaxy High Impact / Optrel Nova													
Micro plasma welding	4		5		6		7		8		9		10		11		12		13							
			Optrel p450 Tribe / Optrel OSC		Optrel Galaxy High Impact / Optrel Nova																					
Grinding									Optrel Galaxy High Impact																	
									Optrel Galaxy High Impact																	

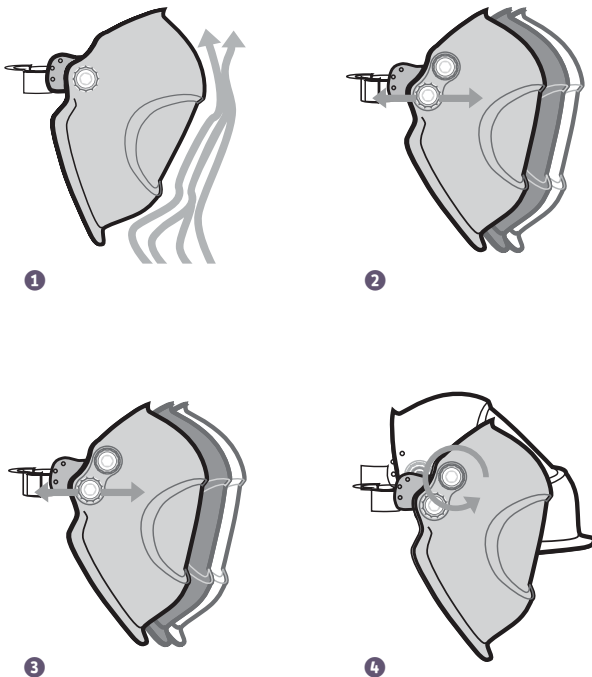
Comfort & performance thanks to the benefits of the OSE helmet shell

The OSE helmet shell from Sperian not only offers a state-of-the-art design, but also maximum levels of comfort and performance. The OSE helmet shell and cover lens provide the greatest level of protection from flying objects, and are approved to AS/NZS 1337 with a high impact rating. The OSE helmet shell is also lightweight, providing all day comfort.

The rounded shape of the shell and the heat reflectant metallic paints used ensure a more comfortable temperature inside the helmet. Fume is also deflected away from the welder due to the shape again adding to the comfort factor.

Comfort & performance

- > Ergonomic lightweight design with optimum balance for minimum neck strain.
- > High-grade, heat-resistant material.
- > Heat-reflective colour for comfortable temperatures inside the helmet.
- > Contoured profile, channelling fumes away ❶.
- > Extremely long-life spherical cover lens with a seal to prevent the infiltration of gas, fumes and particles.
- > Telescoping adjustability of the headband to improve the field of vision ❷.
- > Tilt adjustability to set the optimum position of the helmet in relation to the chin ❸.
- > Extended coverage zone to protect the neck and ears ❹.



Ideal partner for the expert Welder



The futuristic and sleekly designed Optrel® Satellite has set a new standard. Approved to AS/NZS 1337 for high impact protection from flying debris, the Optrel® Satellite features everything you could possibly need for just about any welding application.

Electric arc welding processes:

Electrode Welding (Stick Welding, SMAW), MIG/MAG (GMAW), GMAW High melting rate process, Flux Cored Wire Welding, TIG welding (GTAW), Plasma Arc Welding, Micro Plasma Arc Welding, Plasma cutting and Grinding.

SPERIAN OPTREL® SATELLITE WELD & GRIND WITH CLASS



The Optrel® Satellite is packed full of features and embodies comfort and safety. The 5-13 shade adjustment function gives welders the freedom to use different materials and welding processes, and make adjustments according to individual needs.

- > Variable shades 5-13 & rated to High Impact.
- > Grind button stops lens darkening for use in grinding applications.
- > External controls eliminate need to remove helmet to adjust settings.
- > Dark to light delay switch - select fast or slow.
- > Solar cells eliminate the need for battery change.
- > 2 Year Warranty on ADF filter.

Technical Data

Weight:	570 grams.
Impact Protection:	High Impact & IR UV Protection.
Approvals:	AS/NZS 1337 & 1338.

100-150 OPTREL® SATELLITE

Intelligent welding protection



The Optrel® Orion features unique sensor technology which allows the welding cartridge to automatically adjust the shade level and constantly adapt to suit the welding application. The user can select “Auto” or “Manual”. In the “Manual” setting, the user can select the shade level.

Electric arc welding processes:

Electrode Welding (Stick Welding, SMAW), MIG/MAG (GMAW), GMAW High melting rate process, Flux Cored Wire Welding, TIG welding (GTAW), Plasma Arc Welding, Micro Plasma Arc Welding, Plasma cutting.

Comfort and high quality protection



The Optrel® Mira Plus features a high quality filter and with the use of the Expert helmet shell, the welder benefits from excellent optics, shade selection and comfort. The slide switch at the back of the cartridge allows the welder to select the right level of protection.

Electric arc welding processes:

Electrode Welding (Stick Welding, SMAW), MIG/MAG (GMAW), GMAW High melting rate process, Flux Cored Wire Welding, TIG welding (GTAW), Plasma Arc Welding, Micro Plasma Arc Welding.

SPERIAN OPTREL® ORION AUTOMATIC SHADE ADJUSTMENT



SPERIAN OPTREL® MIRAPLUS STANDARD FUNCTIONS IN A TOP QUALITY HELMET



The Optrel® Orion features unique sensor technology which allows the welding cartridge to automatically darken to the required shade level by sensing the intensity of the arc and adjusting to suit.

- > Variable Shades 9-13 (auto & manual mode) & rated to High Impact.
- > Shade level automatically adjusts as arc light intensity changes.
- > External controls eliminate need to remove helmet to adjust settings.
- > Dark to light delay switch-select fast or slow.
- > Solar cells eliminate the need for battery change.
- > 2 Year Warranty on ADF filter.

Technical Data

Weight: 570 grams
Impact Protection: High Impact & IR UV Protection.
Approvals: AS/NZS 1337 & 1338.

1000-251 OPTREL® ORION

The Optrel® MiraPlus allows the welder to select the required shade level according to his requirements using the slide switch on the rear of the cartridge. It can be set to either shade 10 or shade 11.

- > Variable Shades 10 or 11 & rated to High Impact.
- > Select Shade level using a toggle switch.
- > Removable sensor bar allows angle of detection from 60 or 120 degrees.
- > Solar cells eliminate the need for battery change.
- > 2 Year Warranty on ADF filter.

Technical Data

Weight: 530 grams.
Impact Protection: High Impact & IR UV Protection.
Approvals: AS/NZS 1337 & 1338.

1003-001 OPTREL® MIRAPLUS



The Welding Solution for Experts.

The OS100™ blower unit is powered by a rechargeable battery and draws air through a fine particulate filter, ventilating the helmet with clean, refreshing air. Fitted with both visible and audible alarms to alert the operator if the filter is blocked, missing or the battery is low. The face seal is made from a knitted soft flame retardant material, which provides a well adapted fit, outstanding wearer comfort and a perfect seal.

A comfortable flame retardant waist belt threads through a leather lumbar support which fits the system to the user's body. Smart electronics provide a constant airflow rate of 170l/min, regardless of battery charge or filter loading and keeps a permanent over pressure in the helmet to avoid penetration of contaminants. A short air duct attached to the helmet decreases the risk of snagging on surrounding structures.

Suggested Applications:

All Welding applications requiring protection from dust & fumes.

SPERIAN OPTREL® OS100™ WELDING PROTECTION WITH A BREATH OF FRESH AIR



Designed especially for welders, the Optrel® OS100™ provides ideal protection against UV & IR radiations, flying particles, metal fumes and dusts emitted during welding and associated processes.

- > Blower delivers air at a flow rate of 170 lpm to the welding helmet.
- > Dual alarms alert user to blocked or missing filter & low battery.
- > Battery Life: 8 hours, Recharge Time: 3 hours.
- > Short air duct on helmet increases mobility of the welder.
- > Flame retardant face seal, waist belt & air supply hose.
- > Switch in helmet allows user to direct the flow of air as required.

Technical Data

Weight:	1350 grams includes blower and battery.
Impact Protection:	High Impact IR and UV Protection. P2 Protection against dust & fumes.
Approvals:	AS/NZS 1337 & 1338. AS/NZS 1716:2003.

- 4147-000 OPTREL® OS100™ COMPLETE KIT
- 4148-000 OPTREL® OS100™ COMPLETE KIT MINUS SHADE CARTRIDGE
- 4088-000 OPTREL® OS100™ REPLACEMENT FILTER P2
- 4141-000 OPTREL® OS100™ HELMET ONLY (NO SHADE CARTRIDGE)
- 4153-000 OPTREL® OS100™ BLOWER UNIT ONLY

Easy handling and improved efficiency thanks to the benefits of the OPTREL® Professional Series.

The Optrel® Professional series meets the demands of professional welders.

The simple yet ingenious helmet shell designs have been proving their worth for decades and are still some of the best helmets on the market. The ergonomically designed, perfectly balanced shells provide the ideal basis for an ADF with all the basic functions.

Thanks to the use of the patented headband, all Optrel® Pro series helmets can be easily adapted to the needs of each welder. The patented headband from the Expert range is also used in the Professional range:

1 Adjustment to head size

The user-friendly ratchet knob on the rear part of the headband and the perforated band enable the helmet to be quickly adjusted to the individual head size. The viewing window of the cartridge can be set to be in the correct position for each individual's personal viewing requirements by a simple adjustment of the upper head band. Once set, this position is maintained each time the helmet is used.

2 Adjustment of the distance between the cartridge and the eyes

The headband can be set to three settings by releasing the adjustment knobs on the side. This allows precise adjustment of the distance between the ADF and the eyes. This takes into account those wearing glasses and different head shapes adding to the comfort factor of wearing the helmet.

3 Adjustment of the helmet angle

The helmet angle can be adjusted by turning the eccentric knob linked to this support plate. This is an ideal adjustment when welding in different positions to ensure best protection and comfort.



The P450 Tribe features 9-13 protection with attitude



With variable shade adjustment from 9-13 and a cool tribal design, the P450 tribe is the welding helmet of choice for young welders. The P450 tribe is suitable for many different welding applications and provides a quality welding helmet at an affordable price.

Electric arc welding processes:

Electrode Welding (Stick Welding, SMAW), MIG/MAG (GMAW), GMAW High melting rate process, Flux Cored Wire Welding, TIG welding (GTAW), Plasma Arc Welding, Micro Plasma Arc Welding

SPERIAN OPTREL® P450 TRIBE™ PROTECTION WITH ATTITUDE



The Optrel® P450 Tribe™ welding helmet features all the good looks, comfort and versatility you would expect from a Sperian helmet but is also a cost effective welding option boasting attitude and style.

- > Variable Shades 9-13 & rated to Medium Impact.
- > Shade level adjustment knob on outside of helmet.
- > Solar cells eliminate the need for battery change.
- > Tribal design encompasses attitude and style.
- > 2 Year Warranty on ADF filter.

Technical Data

Weight:	505 grams.
Impact Protection:	Medium Impact & IR UV Protection.
Approvals:	AS/NZS 1337 & 1338.

1004-048 OPTREL® P450 TRIBE™

9-13 protection with classic style



The Optrel® OSC has been on the market for more than 10 years and is still number one with many welders. The simple, but pleasing shape of the OSC, together with the high quality 9-13 shade adjustment, offers long-lasting and reliable protection.

Electric arc welding processes:

Electrode Welding (Stick Welding, SMAW), MIG/MAG (GMAW), GMAW High melting rate process, Flux Cored Wire Welding, TIG welding (GTAW), Plasma Arc Welding, Micro Plasma Arc Welding.

Converts Passive helmets to auto darkening

The Optrel® Nova allows welders to convert their passive welding helmet into auto darkening. The nova slides into most helmets to easily replace the passive lens.

Electric arc welding processes:

Suitable for MIG/MAG & Electrode Welding

SPERIAN OPTREL® OSC AUTOMATIC SHADE PROTECTION FROM 9-13



The Optrel® OSC features a quality 9-13 shade cartridge. The large shade level knob on the outside of the helmet allows the shade level to be changed easily without removing the helmet even when wearing gloves.

- > Variable Shades 9-13.
- > Solar cells eliminate the need for battery change.
- > Shade level adjustment knob on outside of helmet.
- > Dark to light delay switch - select fast or slow.
- > 2 Year Warranty on ADF filter.

Technical Data

Weight: 485 grams.
 Impact Protection: Medium Impact & IR UV Protection.
 Approvals: AS/NZS 1337 & 1338.

100-001 OPTREL® OSC

SPERIAN OPTREL® NOVA POWERFUL SINGLE SHADE ADJUSTMENT



The Optrel® Nova is a powerful single ADF which darkens to shade 10 and suits most passive welding helmets.

- > Allows you to convert your passive welding helmet to auto darkening.
- > Darkens automatically within a fraction of a millisecond.
- > Solar Energy panel eliminates the need for batteries.
- > Auto Darkening lens with shade 3/10 or by use of an additional coloured filter 4/11.
- > Cartridge dimensions: 50.8 x 108mm.
- > Suitable for MIG/MAG & Electrode Welding.

Technical Data

Weight: 108 grams.
 Approvals: AS/NZS 1337 & 1338.

501-220 OPTREL® NOVA SHADE CARTRIDGE

High Impact Approved protection for welders.

Introducing the new Optrel® Galaxy High Impact welding helmet, the only passive flip-front, high impact approved helmet available. The flip-up adaptor contains an integrated passive shade 10 welding filter, and the high velocity impact rating of the helmet keeps you safe during both grinding and welding applications. Adjustable headgear provides improved comfort, increasing wearability and therefore safety. The Optrel® Galaxy high impact eliminates the need to remove your helmet to switch to a faceshield when moving from welding to grinding making this welding helmet your complete safety solution.

Suggested Applications:

Welding & Grinding.

SPERIAN OPTREL® GALAXY HIGH IMPACT HIGH IMPACT PROTECTION FOR WELDERS



Flip down when welding

Flip up when grinding

The versatile Optrel® Galaxy High Impact is high velocity impact approved and includes a flip up adaptor with a shade 10 welding filter. Suits both welding and grinding applications.

- > High Impact approved clear lens removes the need to change from your welding helmet to a visor when grinding.
- > Can be converted to an auto darkening helmet using the Nova Shade Cartridge.
- > Passive Shade 10 welding filter in flip up adaptor.
- > Adjustable headgear for improved comfort and usability.
- > Full range of spare parts available.

Technical Data

Weight:	490 grams.
Impact Protection:	High Impact & IR UV Protection.
Approvals:	AS/NZS 1337: 1992.

1000-571 OPTREL® GALAXY HIGH IMPACT • 5000-226 HIGH IMPACT INSIDE LENS PK OF 5 • 5000-227 FRONT COVER LENS PK OF 5
500-030 INNER COVER LENS PK OF 5





501-118



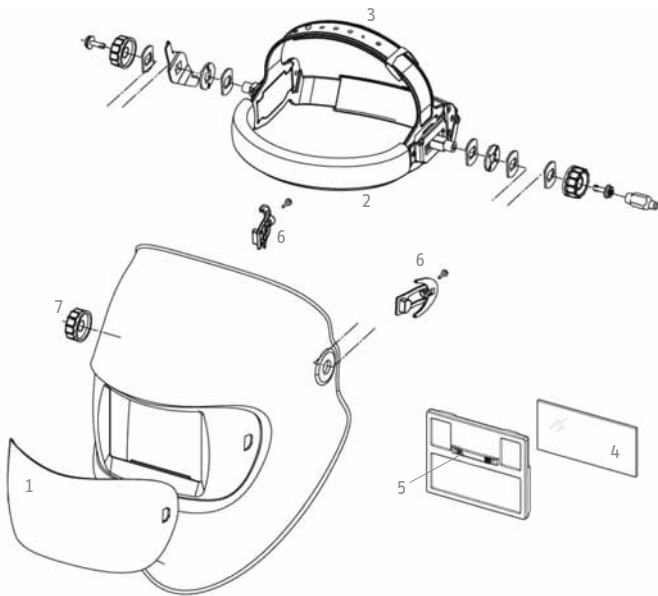
4028-015



500-030

HELMET ACCESSORIES SUIT ALL SPERIAN OPTREL® WELDING HELMETS

Part No.	Description
501-118	HARD HAT ADAPTOR
500-407	SWEATBAND
500-325	REPLACEMENT HEAD GEAR
500-030	INSIDE COVER LENS
500-035	INSIDE COVER LENS DARK GREEN
500-040	INSIDE COVER LENS LT GREEN
500-045	INSIDE COVER LENS BLUE
500-050	MAGNIFYING LENS DIOPTER 1
500-060	MAGNIFYING LENS DIOPTER 1.5
500-070	MAGNIFYING LENS DIOPTER 2
500-080	MAGNIFYING LENS DIOPTER 2.5
4028-015	LEATHER CHEST PROTECTOR
4028-016	LEATHER NECK PROTECTOR



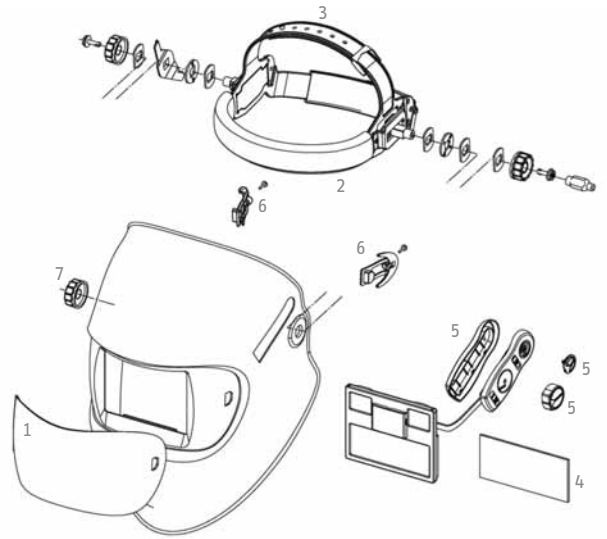
SPERIAN OPTREL® MIRAPLUS

No. Part No.	Description	Pack Qty
* 1003-001	Optrel® Miraplus black (uncoated)	1 pcs
1a 500-210	Front cover lens	2 pcs
1b 500-212	Front cover lens	5 pcs
2 500-407	Sweatband	2 pcs
3 500-325	Headgear	1 pcs
4 500-030	Inside cover lens	5 pcs
5 500-700	Sensor bar	10 pcs
6 503-402	Repair set 2, Expert series (2 clips, 2 screws)	1 pcs
7 500-205	Excentric knob for angle of inclination	10 pcs

* Complete helmet
 ** ADF lens not sold separately

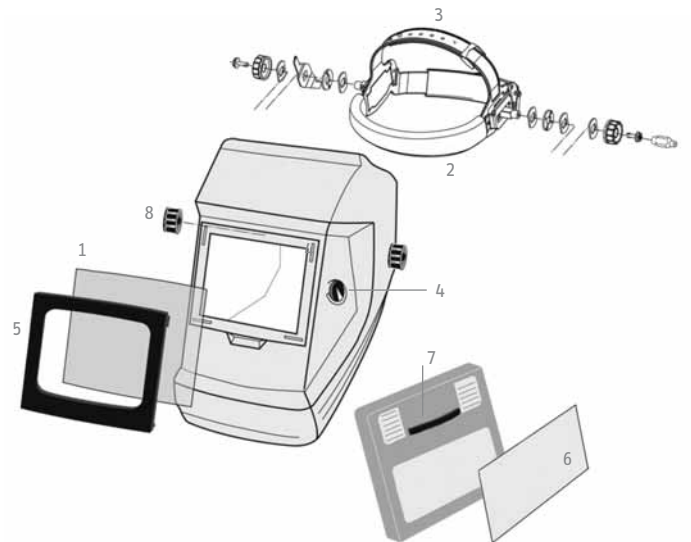
SPERIAN OPTREL® ORION

No. Part No.	Description	Pack Qty
* 1000-251	Optrel® Orion blue magic	1 pcs
1a 500-210	Front cover lens	2 pcs
1b 500-212	Front cover lens	5 pcs
2 500-407	Sweatband	2 pcs
3 500-325	Headgear	1 pcs
4 500-030	Inside cover lens	5 pcs
5 503-401	Repair set 1, Expert series (1 potentiometer knob, 1 cover plate 1 sensitivity knob)	1 pcs
6 503-402	Repair set 2, Expert series (2 clips, 2 screws)	1 pcs
7 500-205	Excentric knob for angle of inclination	10 pcs



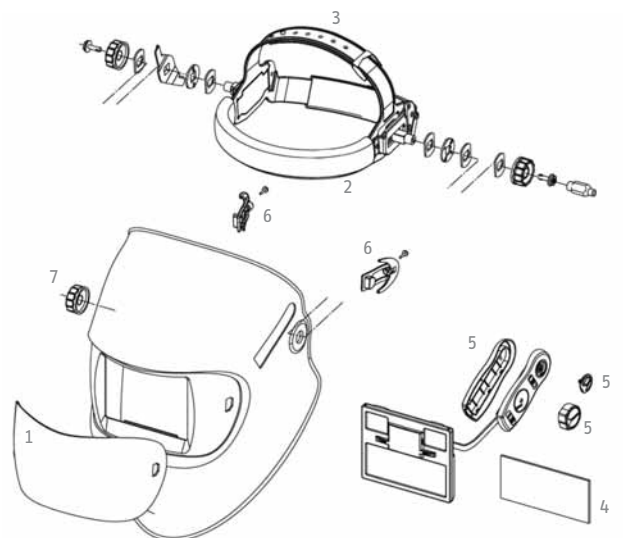
SPERIAN OPTREL® OSC

No. Part No.	Description	Pack Qty
* 100-001	Optrel® OSC black (uncoated)	1 pcs
1 500-010	Front cover lens	10 pcs
2 500-407	Sweatband	2 pcs
3 500-325	Headgear	1 pcs
4 500-086	Potentiometer knob	10 pcs
5 5000-490	Front cover lens frame	10 pcs
6 500-030	Inside cover lens	5 pcs
7 500-700	Sensorbar	10 pcs
8 500-205	Excentric knob for angle of inclination	10 pcs



SPERIAN OPTREL® SATELLITE

No. Part No.	Description	Pack Qty
* 100-150	Optrel® Satellite blue	1 pcs
1a 500-210	Front cover lens	2 pcs
1b 500-212	Front cover lens	5 pcs
2 500-407	Sweatband	2 pcs
3 500-325	Headgear	1 pcs
4 500-030	Inside cover lens	5 pcs
5 503-401	Repair set 1, Expert series (1 potentiometer knob, 1 cover plate 1 sensitivity knob)	1 pcs
6 503-402	Repair set 2, Expert series (2 clips, 2 screws)	1 pcs
7 500-205	Excentric knob for angle of inclination	10 pcs



* Complete helmet
** ADF Lens not sold separately

SPERIAN OPTREL® P450 TRIBE

No. Part No.	Description	Pack Qty
* 1004-048	Optrel® P450 Tribe black	1 pcs
1 500-030	Inside cover lens	5 pcs
2 5000-221-01	Front cover lens	5 pcs
3 500-407	Sweatband	2 pcs
4 500-325	Headgear	1 pcs
5 500-086	Potentiometer knob	10 pcs
6 500-205	Excentric knob for angle of inclination	10 pcs

SPERIAN OPTREL® OS100™ AUS¹

No. Part No.	Description
4147-000	Optrel® OS100™ AUS with Optrel® Satellite blue
1 4088-000	P2 filter
2 4141-000	Replace helmet shell Optrel® Satellite blue incl. Airduct and face-seal (without cartridge)
3 4153-000	OS100™ blower AUS incl. filter, battery, charger, hose, protective sleeve, flowmeter, fabric belt and storage case
4 4155-008	Battery
5 4155-002	Fabric belt with back support
6 4155-020	Flowmeter AUS
7/8 4155-001	Air hose & protective sleeve
8 4155-003	Protective sleeve
9 4160-000	Face-seal for welding helmet

OTHER SPARE PARTS AND ACCESSORIES

4155-010	Charger AUS
4074-001	Storage case

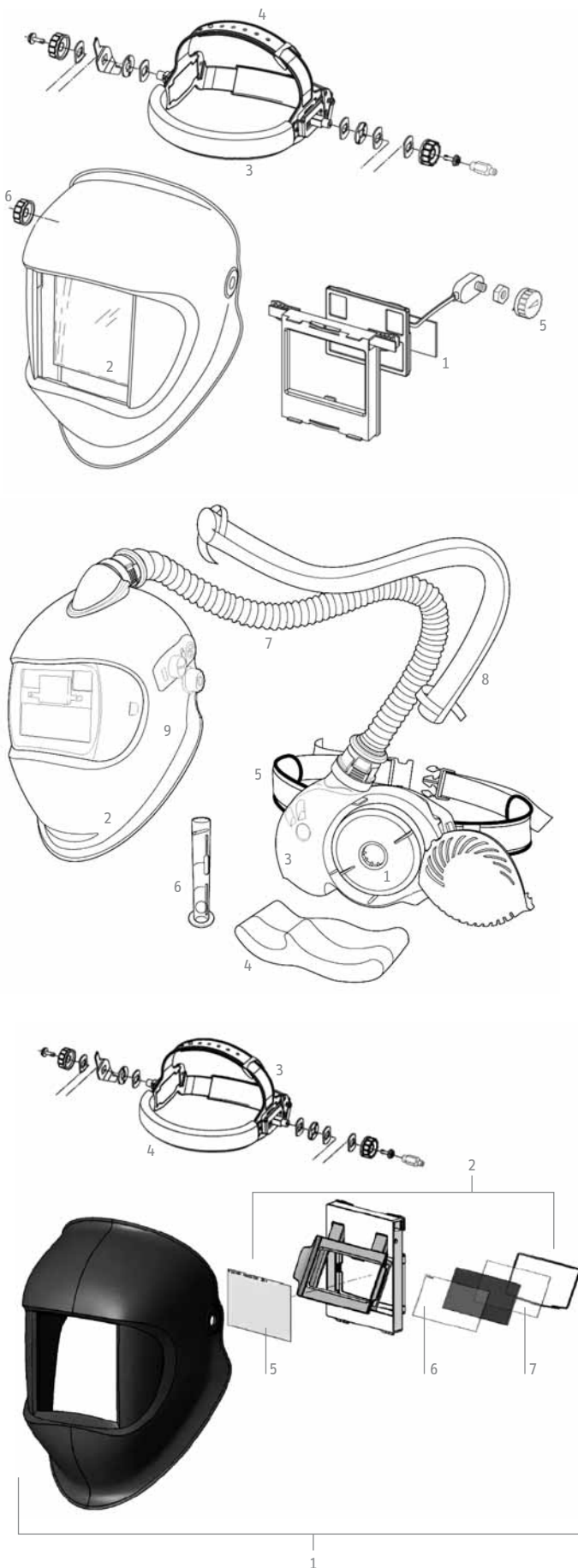
GALAXY FLIP FRONT PASSIVE WELDING HELMET SPARE PARTS BREAKDOWN

No. Part No.	Description
1 1000-571	Galaxy High Impact Passive Helmet. Complete
2 5002-069	High Impact Flip Front Adaptor with all lenses
3 500-325	Head Harness Complete with Sweatband
4 500-407	Replacement Sweatband. Pack of 2
5 5000-226	Inside Cover Lens for Helmet. Rated to High Impact. Pack of 5
6 5000-227	Cover Lens to suit adaptor. Pack of 5
7 500-030	Inner Cover lens to suit adaptor. Pack of 5

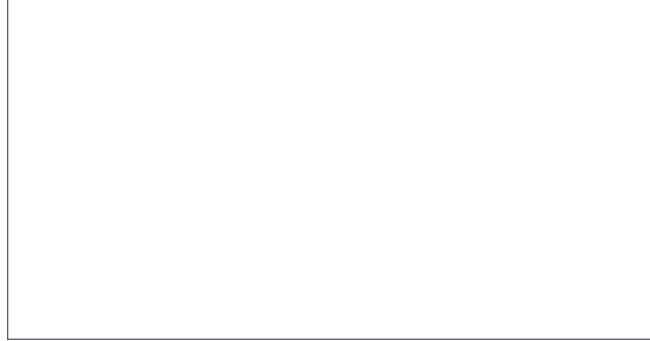
* Complete helmet

** ADF Lens not sold separately

¹ For spare parts for the OS100 welding helmet please see spare parts listing for the Optrel Satellite







SPERIAN PROTECTION AUSTRALIA PTY LTD

43 Garden Boulevard,
Dingley,
Victoria 3172
Australia

Tel: 1300 139 166
Fax: 1300 362 491

New Zealand
Tel: 0800 322 200