



HAND & BODY PROTECTION PRODUCTS





Disclaimer: Not all items that appear in this catalogue are ex stock. Some items may need to be manufactured to your specifications upon placement of order. Please refer to your Sperian price list for pricing and availability. Products are subject to change without notice.



Contents

GLOVE GENERAL INFORMATION		CHAINMESH GLOVES	
> General Information	4	> Chainmesh General Information	18
> Safety Products – Sperian Gloves	5	> ChainExpert Chain Gloves	20
> Materials and Mechanical Hazards	6	> Chainex® Spares	20
> Glove Coatings	7	> ChainExtra Chain Gloves	21
> Selection Chart	8	> Chainex® 2000	21
DIPPED GLOVES		CHAINMESH APRONS AND TUNICS	
> 395 With Foamed Nitrile Palm Coating	10	> ChainexLite® Aprons And Tunics	22
> HPPE Palm Plus	10	> Lamex Plus Aprons	22
> FLX-cut™	11	> ChainexTwo® Aprons And Tunics	22
> WorkEasy™ 110	11	> ChainexTwo® Hybrid Tunic	22
> WorkEasy™ 210	11	> HPPE Gloves	23
> WorkEasy™ Polytril Plus	11		
> Atlas Re-grip	12	ELECTROSOFT® LINESMEN GLOVES	
> Atlas Fit Glove with Nitrile Palm	12	> Linesmen Gloves General Information	24
> Atlas Fit Glove with Natural Rubber Palm	13	> Electrosoft® Latex Gloves	25
> Atlas Therma Fit	13	> Electrosoft® Overgloves	25
> Tuff Coat Natural Rubber Palm Kevlar® Fibre Glove	13	> Electrosoft® Composites	26
> Tuff Coat Nitrile Palm	13		
KEVLAR® FIBRE SEAMLESS GLOVES			
> Tuff-Knit KV™ Lightweight Glove	14		
> Tuff-Knit KV™ Extra Dot-coated Glove	14		
> Leather Reinforced Kevlar® Arm Protector	15		
> Standard Weight Kevlar® Arm Protector	15		
KEVLAR® FIBRE AND LEATHER GLOVES			
> Junk Yard Dog® Premium Leather Palm Glove	16		
> Bull Dog Leather Palm Glove	16		
> Guard Dog® Premium Grade Leather Glove with Safety Cuff	17		

Sperian Protection are world leaders in personal protective equipment (PPE).

Driven by our commitment to ongoing research and innovation, we design and manufacture an extensive range of purposeful safety solutions for use in the most challenging situations.

Based on in-depth knowledge of our customers' needs, each high quality product is engineered to meet the requirements of specific jobs and environments, and combines advanced technology, comfort and user fit. Sperian Protection has long been a leader in hand and arm protection.

Since 1973, we have dedicated ourselves to providing our customers with better, more cost-effective protection against work hazards. Sperian Protection has refined the art of seamless glove making and have introduced dramatically superior coating processes and advanced fibre technologies into the market. This constant innovation ensures that Sperian gloves and sleeves will be right for your job, fit better and last longer.

To meet the demands of today's increasingly specialised industries, we offer design creativity, manufacturing flexibility and the widest array of fibres, coatings and reinforcements available.

Our dedicated team of experienced problem solvers will work with safety professionals to determine which gloves will provide the best protection for every unique or demanding application.

The Sperian Industrial Glove range is further enhanced with the inclusion of Chain Mesh gloves, and Linesmen gloves. The PowerCoat® range of chemical gloves stands up to the toughest industrial work applications.

If you have any further questions, please telephone the Sperian Protection help line on 1300 139 166.

www.sperianprotection.com.au

GLOVE TESTING

Sperian gloves are intended for specific use, comply with EN 420 (general criteria for comfort) and meet the requirements of the main glove standards, e.g. EN 388 - Mechanical Hazards and Impact Cuts.

Mechanical testing is carried out to help employers/employees determine the suitability of a particular PPE product for use.

Sperian Protective Gloves uses several methods to determine mechanical performances for gloves including ASTM and EN 388 (EN 388 is the European test method for CE standard) methods.

Abrasion Resistance

Abrasion Resistance testing measures how well the glove material resists loss of material from friction. Large numbers of abrasion cycles (until material is worn through) reported by this method indicate a glove with greater abrasion resistance.

Cut Resistance

Cut resistance testing measures how the glove material will resist cutting by a sharp edge when pressure is applied. Larger weights reported by this method indicate a glove material with greater cut resistance.

Tear Resistance

Tear Resistance testing measures the force necessary to propagate a tear in material. Higher tear forces indicate a glove with higher tear resistance.

Puncture Resistance

Puncture resistance testing measures how a glove material will resist puncture by a pointed object (steel stylus). Higher puncture forces reported by this method indicate a glove with greater puncture resistance.

Note: Test should not to be confused with piercing exerted by thin tips or needles - i.e. indicating appropriateness for medical use

Before deciding what type of glove you should choose, it is important to identify the following factors.

3 QUESTIONS

- > What is the working environment: indoor, outdoor, dry, wet, etc.
- > What is the task to be accomplished: handling of heavy parts, precision assembly work, etc.
- > What is the principal risk to be protected against: mechanical, chemical, electrical, thermal, etc.

CHECK YOUR SIZE

Sperian Protection gloves are designed and manufactured to ensure comfort, safety and total adaptability to the workplace. The right glove size depends on the width, length and thickness of the hand. Two measurements are required to establish the correct size. Hand diameter - wrap measuring tape around your hand below the knuckles excluding thumb and make a fist. Length - distance between wrist and middle finger tip.



- > For an indicative glove size, place your hand on the diagram.

5 MAIN GLOVE CATEGORIES

What kind of glove to you need?

- > Knitted and Dipped Gloves
- > Electrical Gloves
- > Chemical Gloves
- > Chainmesh Gloves, Aprons and Tunics

Sperian offers a comprehensive range of gloves manufactured from high performance materials, to suit any type of application. Flame resistant, cut resistant, low linting, lightweight, heavyweight and abrasion resistant materials are used to create gloves to suit your particular needs and requirements.

DUPONT™ KEVLAR®

> A man made fibre with high cut, flame and heat resistance. KEVLAR brand fibre offers advanced cut, heat and abrasion resistance without sacrificing tactile sensitivity.

ARC-TEX™

> Gloves and sleeves knitted from Arc-TEX fibre are soft, flexible and comfortable. Arc-TEX fibre is tagged with an arc rating value and HRC* number. The material is made from an oxidized, thermally stabilised fibre that will not burn, melt, soften or drip. Please ask us for more information. (*hazard risk category)

STAINLESS STEEL

> High tensile strength, corrosion-resistant stainless steel or titanium. Gloves and safety apparel made with metal mesh provide the highest level of protection against cut, slash and laceration hazards in cutting operations. The material is hygienic and easily sanitised so it is suitable for food processing operations.

HPPE HIGH PERFORMANCE POLYETHYLENE

> A synthetic fibre with high cut and abrasion resistance. The fibre is lightweight, low linting, and does not easily absorb liquids. Material is chemically inert and withstands commercial laundry room detergents and water temperatures up to 80°C (180°F) and may be repeatedly bleached with diluted solution or disinfected without harm. Gloves made with HPPE are ideal for use in food processing plants, like Spectra or assembly like Dyneema.

DuPont™ and KEVLAR® are trademarks or registered trademarks of DuPont™ or it's affiliates.

Combining comfort, protection and ergonomics for user safety. Designing a glove for every application in any work environment, shows our commitment to the maximum safety of users.

With comprehensive experience in industrial hazards, Sperian designs and manufactures all of its gloves with the aim of ensuring comfort, safety and total adaptability to the workplace. Close partnerships have been set up with major companies world wide.

These industries include automotive, glass, foundry and manufacturing to name a few. Such close co-operation with users ensures that gloves are designed to protect from all types of risks encountered in different working environments and offer durability often beyond the periods prescribed in relevant standards.

A comprehensive selection chart has been included in this catalogue on page 8 to ensure that workers can easily select the glove that is most suitable to their particular application.

MECHANICAL HAZARDS

EN388 Mechanical hazards ratings assist in selecting the best glove properties for your application.



Performance Level

A	Abrasion Resistance	0-4
B	Cutting resistance	0-5
C	Tear Resistance	0-4
D	Perforation Resistance	0-4
X	Not tested for this hazard	
0	Result obtained lower than the min. amount required of level 1	

Sperian glove coatings offer superior abrasion, cut and puncture resistance. A variety of coatings can be applied to the glove to increase the abrasion, cut, and puncture resistance or, to keep contaminants from hands and or products.



1 Natural Rubber

Textured natural rubber palm provides cut and outstanding puncture resistance with a safe, secure grip.

Applications: Construction • Recycling • Lumber and Mill Work • Glass Handling • Sanitation • Metal Stamping • Automotive Sub-Assembly • Landscaping



2 Polyurethane

Flexible, synthetic material helps protect hands from harmful residues and chemicals while providing excellent grip, abrasion resistance, and tactile sensitivity.

Applications: Electronic and Small Parts Assembly • Hi-Tech Applications • Automotive Sub-Assembly • Light Fabrication • Micro-Engineering • Packaging • Inspection • Light Industrial • Horticulture • General Plant Use



3 Foamed Nitrile

Air infused nitrile coating performs stronger than the flat coating with regards to oil absorption. Provides excellent grip in oily or greasy applications while maintaining the cut, slash and abrasion resistance of a flat nitrile coating.



The foamed nitrile coating absorbs oil and grease to ensure a firm grip, yet keeps hands dry and clean.

Applications: Automotive Assembly • Parts Assembly • Parts Handling • Automotive Repair • Oil Refineries

4 Polytril

Polytril finish absorbs oil and grease, ensuring a firm grip.

5 Nitrile

Durable synthetic rubber provides excellent cut, slash, snag, puncture and abrasion resistance while offering superior dexterity and grip especially in oily applications.

Applications: Automotive Assembly • Parts Assembly • Parts Handling • Automotive Repair • Oil Refineries • Glass Handling

6 PVC

A variety of PVC coating patterns are available to provide increased gripping ability while offering dexterity and flexibility.

Applications: Assembly and Parts Handling • General Maintenance • Warehousing • Fabrication • Automotive • Automotive Sub-Assembly • Materials Handling • Construction

GENERAL PURPOSE MATERIALS

Cotton

A natural fibre that provides comfort and breathability in general purpose applications plus abrasion and mild heat protection in heavier weights.

Polyester

A durable, synthetic fibre with low moisture absorbency that resists shrinkage during laundering.

Cotton/Polyester

Polyester, a synthetic fibre, is blended with natural cotton fibres to increase strength and offer basic abrasion resistance.

Nylon

Nylon is a synthetic, low linting, high tensile strength fibre that offers excellent dexterity and tactile sensitivity.

CHEMICAL / LIQUID RESISTANT MATERIALS

Latex/Natural Rubber

A natural material with excellent elasticity that provides resistance to cuts, punctures and slashes.

Nitrile

A synthetic rubber that resists snags, punctures, abrasions, cuts and provides flexibility and dexterity. Nitrile is suitable for people with latex allergies and provides good resistance to grease, oil and to hydrocarbon derivatives. Highly flexible and comfortable.

PVC (Poly-Vinyl-Chloride)/Vinyl

Suitable for people with latex allergies and provides resistance to oils, chemicals and many acids.

A Sperian range of chemical resistant Industrial gloves is available.



With a full range of glove styles, materials, coatings, cuff and grip options, there is a Sperian glove to suit your application.

Refer to the tables on this spread for details on glove applications.

PART NO. & DESCRIPTION	MATERIAL	COATING	SIZES	PAGE
395 Pure Fit™	Black Nylon	Grey Foamed Nitrile Palm	S-XL	10
PF541 Pure Fit™	Grey HPPE	Grey Polyurethane Palm	S-XL	10
PF570 Pure Fit™ FLX CUT™	Grey HPPE/Stainless Steel	Grey Nitrile Palm	S-XL	11
WorkEasy™ Polytril Plus	Black Nylon	Black Polytril	9-11	11
WorkEasy™ 110	Black Polyester	Black Nitrile Palm	L-XXL	11
WorkEasy™ 210	Black Polyester	Grey Polyurethane Palm	L-XXL	11
330 Atlas Re-Grip	Grey Cotton/Polyester	Black Natural Rubber Palm Blue Re-grip	S-XL	12
320 Atlas Fit™	Grey Cotton/Polyester	Black Natural Rubber Palm	S-XL	12
350 Atlas Fit™	Grey Cotton/Polyester	Green Nitrile Palm	S-XL	12
300 Atlas Fit™	Grey Cotton/Polyester	Blue Natural Rubber Palm	S-XL	13
451 Atlas Fit™	H/weight Grey Cotton/Polyester	Grey Natural Rubber Palm	S-XL	13
KV300 Atlas Fit™	10 cut KEVLAR	Blue Natural Rubber Palm	S-XL	13
KV350 Atlas Fit™	10 cut KEVLAR	Green Nitrile Palm	S-XL	13
KV13A Tuff-Knit™	13 cut KEVLAR	-	M,L	14
KVD18AR-100 Tuff-Knit™	7 cut Standard weight KEVLAR	Brown Double Side Dot Coating	M,L	14
KVS-2-14TH KEVLAR® Sleeves	7 cut Standard weight KEVLAR	-	10,14,18"	15
KVS-2-14TH-90 KEVLAR® Sleeves	7 cut Standard weight KEVLAR	Leather Reinforcement	14"	15
KV18A-100-50 Junk Yard Dog®	7 cut Standard weight KEVLAR	Leather Palm & Thumb crutch	M,L,J	16
KV18-45 Bull Dog®	7 cut Standard weight KEVLAR	Leather Palm & Thumb crutch	M,L,J	16
KV224D Guard Dog®	KEVLAR knit liner	Leather palm with KEVLAR stitching	M,L,J	17
Chain Mesh Gloves ChainExpert	Stainless Steel, Detectable or Titanium	-	assorted	20
Chain Mesh Gloves ChainExtra	Stainless Steel or Titanium	-	assorted	21
Chain Mesh Gloves Chainex 2000	Stainless Steel	-	assorted	21
APRONS & TUNICS				
ChainexLite, ChainexTwo, Lamex Plus	Aluminium, S/Steel or Titanium	-	assorted	22
PF10 Tuffshield® Glove	10 cut HPPE	-	XS-XL	23
PF13 Tuffshield® Glove	13 cut HPPE	-	XS-XL	23
LPFSL-21-AC Tuffshield® Glove Sleeves	10 cut HPPE	-	21"	23
Latex Electrical	Natural Latex	-	assorted	25
Overgloves Electrical	Leather	-	assorted	25
Composites Electrical	Natural Latex on Interlock Cotton	Orange Polychloroprene	8-11	26

Hi-Tech coated gloves, offer excellent dexterity and superior tactile sensitivity.

Suited for work requiring precision handling, the Sperian Hi-Tech coated gloves are made from low-linting filament fibres. Many styles are available with a variety of coatings for increased grip and abrasion resistance.

The range features:

- > Seamless knit construction that eliminates uncomfortable seams that can rub or chafe.
- > Lightweight knit for ventilation keeping hands cool and dry.
- > Lightweight fibres provide superior tactile sensitivity for precision handling and delicate operations.
- > Palm dipped design reduces hand fatigue, offering extreme dexterity, improved fit, & comfort during long periods of use.
- > Coatings help keep hands cool and dry and protect against dermatitis.
- > Coatings help prevent glove “blow out” so gloves last longer than standard cut and sewn gloves.

Applications:

Automotive Assembly, Parts Assembly, Light Fabrication, Micro Engineering, Hi-tech Applications, Parts Handling.



PURE FIT™ 395 WITH FOAMED NITRILE PALM COATING



Air infused nitrile palm coating provides excellent grip in oily or greasy applications.

- > 13-cut lightweight black nylon shell with grey foamed nitrile palm coating.
- > Foamed nitrile coating absorbs oil & grease ensuring a firm grip.
- > Keeps hands dry and clean.
- > Cut, slash and abrasion resistant.
- > Offers uses with excellent dexterity and tactile sensitivity.

395 (BLACK/GREY) SIZES S,M,L,XL

HPPE PALM PLUS



A combination of HPPE fibre with polyurethane palm coating offers increased cut resistance.

- > 13-cut lightweight charcoal HPPE shell with grey polyurethane palm and fingertip coating.
- > Increased cut resistance and superior abrasion resistance.
- > Polyurethane coating protects hands from harmful residue.
- > 10 times greater abrasion resistance than para-aramid fibres.
- > Flexible synthetic palm coating, perfect for hi-tech applications.

PF541 (GREY/GREY) SIZES S,M,L,XL

PURE FIT™ FLX-CUT™



With a blend of HPPE fibre and stainless steel, the new FLX-CUT™ provides a whole new level of protection.

- > 13-cut lightweight grey shell with grey nitrile palm and fingertip coating.
- > Offers wearers a high level of cut resistance.
- > Materials do not sacrifice dexterity or tactile sensitivity.
- > Extremely comfortable snug fit.
- > Excellent cut and abrasion resistance.

PF570 SIZES S,M,L,XL

WORKEASY™ POLYTRIL PLUS



Polytril glove provides excellent dexterity and superior tactile sensitivity. Ideal for automotive assembly and repair, parts handling, oil refineries.

- > Seamless knit construction eliminates uncomfortable seams.
- > Low linting filament fibres - ideal for precision handling.
- > Lightweight knit enhancing ventilation to keep hands cool and dry.
- > Polytril absorbs oil and grease, ensuring a firm grip.
- > Palm dip helps reduce hand fatigue, offers a better fit, and is more comfortable over long periods of time.

2232232 (BLACK/BLACK) SIZES 9,10,11

WORKEASY™ 110



The WorkEasy™ glove is a general purpose glove, featuring a polyester shell with non-porous nitrile palm coating.

- > Light weight 13-gauge liner provides superior worker comfort and dexterity.
- > Black liner and coating minimise the visible effects of dirt, soil and staining.
- > Nitrile coating resists minor nicks, cuts, punctures and abrasion.
- > Coating provides a secure grip on smooth or rough surfaces.

WE110 (BLACK/BLACK) SIZES L,XL,XXL

WORKEASY™ 210



The WorkEasy™ glove is a general purpose glove, featuring a polyester shell with smooth polyurethane palm-fingertip coating.

- > Light weight 13-gauge polyethylene liner is cool, comfortable and provides a high level of flexibility.
- > Grey PU coating resists minor nicks, cuts, punctures and abrasion.
- > Black liner and grey coating provides minimise the visible effects of dirt, soil and staining.

WE210 (BLACK/GREY) SIZES L,XL,XXL

Coated knit gloves provide durable hand protection without sacrificing dexterity.

Sperian coated knit gloves are made of a medium weight cotton/polyester blend, and offer several coating options for increased grip, cut, puncture and abrasion resistance.

Featuring:

- > Seamless knit construction eliminates uncomfortable seams that can tear, rub or chafe.
- > Open back configuration provides superior ventilation.
- > Coatings provide excellent wet-slippery grip and help inhibit liquid penetration.
- > Flexible, ergonomically correct design conforms snugly to the natural shape of the hand, increasing comfort and reducing hand fatigue.
- > Colour coded edge allows for easy sorting after laundering.

Natural Rubber Glove Applications:

Construction, Recycling, Lumber and Mill Work, Glass Handling, Sanitation, Metal Stamping, Automotive Sub-Assembly, Landscaping.

Nitrile Coating Glove Applications:

Automotive Assembly, Parts Assembly, Parts Handling, Automotive Repair, Oil Refineries, Glass Handling.

Warning: These products contain natural rubber/latex which may cause allergic reactions in some individuals.

ATLAS RE-GRIP



The Re-Grip offers an extra layer of natural rubber in the thumb crotch increasing abrasion resistance.

- > 10-cut medium weight grey cotton/polyester seamless knit with black textured natural rubber coating.
- > An extra layer of blue rubber in thumb crotch area.
- > Increased abrasion resistance.
- > Enhanced grip.
- > Perfect for use in any working environment.

330 SIZES S,M,L,XL • 320 (WITHOUT RE-GRIP) SIZES S,M,L,XL

ATLAS FIT WITH NITRILE PALM



Durable synthetic rubber offers excellent cut, slash puncture and abrasion resistance with superior dexterity.

- > Cotton/polyester blend.
- > Nitrile palm and finger tips.
- > 10-cut medium weight.
- > Durable textured Nitrile palm for safe, sure grip and abrasion resistance.
- > Coated fingertips & thumb crotch minimise wear to critical areas.
- > Nitrile coating helps inhibit liquid penetration.

350 SIZES S,M,L,XL



ATLAS FIT GLOVE WITH NATURAL RUBBER PALM



Natural rubber provides outstanding abrasion resistance.

- > Cotton polyester blend.
- > Natural rubber palm and fingertips.
- > 10-cut medium weight.
- > Textured natural rubber palm provides cut, puncture and outstanding abrasion resistance.
- > Safe and secure fit.

300 SIZES S,M,L,XL

TUFF COAT NATURAL RUBBER PALM KEVLAR® FIBRE GLOVE



Natural 10 cut medium weight rubber with Kevlar® fibre offers high tensile strength and superior protection.

- > 100% Kevlar® branded fibre.
- > Natural rubber palm and fingertips.
- > Rubber palm provides safe sure grip and abrasion resistance.
- > Conforms to the natural shape of the hand for a comfortable fit.
- > Natural rubber inhibits liquid penetration.

KV300 SIZES S,M,L,XL

ATLAS THERMA FIT



Napped knit shell provides a cushion of air to protect hands from the cold.

- > Heavyweight grey cotton/polyester napped knit shell with grey natural rubber palm and fingertip coating.
- > Protects hands from cold applications.
- > Natural rubber palm coating provides excellent abrasion resistance.
- > Grey colour assists in hiding dirt and grime.
- > Flexible ergonomic design fits snugly and decreases hand fatigue.

451 SIZES S,M,L,XL

TUFF COAT NATURAL RUBBER PALM KEVLAR® FIBRE GLOVE WITH NITRILE PALM



Natural 10 cut medium weight rubber with Kevlar® fibre offers high tensile strength and superior protection.

- > 100% Kevlar® branded fibre.
- > Natural rubber palm and fingertips.
- > Rubber palm provides safe sure grip and abrasion resistance.
- > Conforms to the natural shape of the hand for a comfortable fit.
- > Natural rubber inhibits liquid penetration.

KV350 (WITH NITRILE PALM) SIZES S,M,L,XL

KEVLAR® strength for superior cut, slash and heat resistance.

Used to make bullet proof vests, KEVLAR® brand fibre is 5 times stronger than steel on an equal weight basis and has a high tensile strength that protects hands during hazardous applications.

Featuring:

- > Flame Resistance – KEVLAR® brand fibre will not support a flame and can withstand temperatures of up to 480°C without breaking down.
- > Superior Durability – Given comparable job stresses, gloves made of KEVLAR® brand fibre have been proven to last 3 to 6 times longer than cotton gloves. Seamless construction eliminates tearing or splitting along seams.
- > Ergonomically Correct Design – By eliminating seams that can chafe or constrict movement, Spierian gloves with KEVLAR® brand fibre provide an excellent fit, better breathability and superior comfort for greater productivity and less hand fatigue.
- > Grime Guard™ treatment – Special fibre treatment inhibits water and oil penetration, for longer wear and greater comfort. Excellent laundering.
- > KV Extra™ – Provides superior cut, slash and heat resistance. By adding a rugged, high quality coating, abrasion resistance and grip are significantly enhanced for increased protection and performance.

Applications:

Sheet Metal, glass handling, canning, recycling, welding, injection moulding, metal stamping, automotive manufacturing, steel manufacturing, automotive sub-assembly, precision assembly.



TUFF-KNIT KV™ LIGHTWEIGHT GLOVE



100% KEVLAR® brand fibre. Superior tactile sensitivity, ideal for light-duty applications.

- > 13-cut lightweight, 100% KEVLAR®.
- > Superior tactile sensitivity.
- > Ideal for light-duty applications.
- > Superior comfort.
- > Available in men's and ladies' sizes.

KV13A MEN'S SIZE • KV13AL LADIES' SIZE

TUFF-KNIT KV™ EXTRA DOT-COATED GLOVE



100% KEVLAR® brand fibre. Superior durability with added grip and abrasion resistance.

- > Standard Weight 100% KEVLAR®
- > Double sided brown dot coating.
- > Excellent dexterity.
- > High abrasion resistance .
- > Ambidextrous for added wearability.

KVD18AR-100 MEN'S • KVD18ALR-100 LADIES'

LEATHER REINFORCED KEVLAR® ARM PROTECTOR



100% KEVLAR® brand fibre. Standard weight protection with leather reinforcement & thumb hole for a secure hold.

- > 14 inch, 2 ply, 100% KEVLAR® with thumb hole and leather reinforcement.
- > Standard weight protection.
- > Thumb hole holds sleeve securely in place.
- > Added protection in the palm.
- > Leather reinforced inner arm for increased abrasion and puncture resistance.

KVS-2-14TH-90 14 INCH

STANDARD WEIGHT KEVLAR® ARM PROTECTOR



100% KEVLAR® brand fibre. Standard weight protection with thumb hole for a secure hold.

- > 10, 14 or 18 inch, 2 ply, 100% KEVLAR® with thumb hole.
- > Standard weight protection.
- > Thumb hole holds sleeve securely.
- > Added protection to the palm.

KVS-2-10TH 10 INCH • **KVS-2-14TH** 14 INCH • **KVS-2-18TH** 18 INCH



Junk Yard Dog®. Premium quality and performance.

The best combination of price and performance. Full premium leather and KEVLAR® shell provides exceptional hand protection.

Featuring:

- > 100% KEVLAR® shell is 5 times stronger than steel on an equal weight basis.
- > Leather palm provides solid abrasion resistance.
- > Added durability and improved grip in wet and oily applications.

Bull Dog®. Premium quality and exceptional value.

KEVLAR® Brand fibre shell delivers cut and abrasion protection in an economically priced style.

Featuring:

- > 100% KEVLAR® Shell is 5 times stronger than steel on an equal weight basis.
- > Complete protection with leather palms and between fingers.

Applications:

Steel, automotive assembly, sheet metal fabrication, wet or oily applications, injection moulding, paper and pulp industry.



JUNK YARD DOG PREMIUM LEATHER PALM GLOVE



No job's too mean for the Junk Yard Dog®.

- > Standard weight, 100% KEVLAR®, full premium leather palm, reinforced thumb crotch.
- > KEVLAR® provides exceptional cut, slash, heat and puncture resistance.
- > Premium reinforced leather ensures grip in wet or oily applications.

KV18A-100-50 MEN'S SIZE • **KV18AL-100-50** LADIES' SIZE
KV18AJ-100-50 JUMBO SIZE

BULL DOG LEATHER PALM GLOVE



Economically priced for cut, slash, heat and puncture resistance.

- > Standard weight, 100% KEVLAR®, full leather palm, reinforced thumb crotch.
- > Cut, slash, heat and puncture resistant with added wet or oily grip.

KV18-45 MEN'S SIZE • **KV18L-45** LADIES' SIZE
KV18J-45 JUMBO SIZE

Guard Dog. Premium quality leather, seamless heavy-duty protection.

A seamless, full KEVLAR® brand fibre lining coupled with premium leather offers heavy duty protection.

Featuring:

- > 100% KEVLAR® fibre lining for superior hand protection in hazardous applications.
- > Double-lock KEVLAR® stitched fibre for added reinforcement.
- > Premium grade leather for added durability and improved grip in oily applications.
- > Seamless knit construction eliminates uncomfortable seams that may rub or chafe.
- > Safety cuff for easy on-off and increased wrist protection.

Applications:

Automotive assembly, sheet metal fabrication, wet or oily applications, recycling, canning, steel manufacturing, mig/tig welding, metal stamping, Paper and pulp industry.

GUARD DOG® PREMIUM GRADE LEATHER GLOVE



Full coverage is ideal for heavy-duty applications.

- > Premium grade leather palm, double-lock KEVLAR® stitched, safety cuff, full 100% KEVLAR® seamless knit liner.
- > Ideal for heavy-duty applications requiring cut, slash and puncture resistance.
- > Colour coded cuff for easy size recognition.
- > Safety cuff for easy removal and extra wrist protection.

KV224D MEN'S SIZE • KV224DL LADIES' SIZE • KV224DJ JUMBO SIZE





For over 35 years, Sperian in France, have been designing and manufacturing Chainmail gloves and metal aprons for the meat processing industry. The company's experience and understanding of the meat processing industry has allowed us to pay special attention to the design, ergonomics, practicality and comfort of the product, with the main objective being worker compliance.

Sperian chainmesh protective gloves are designed to let the user forget they are wearing them and are ideally suited for use in even the most difficult working conditions. Extreme working environments, such as abattoirs or meat processing and cutting operations, require maximum hygiene and protection against all possible risks to avoid contamination.

Sperian Chainmesh gloves meet all these needs, and ensure the safety of people and their environment, combining strength, reliability and safety.

Designed to provide total protection, Sperian Chainmail gloves are so light and ergonomic that it is easy to forget you are wearing them, even when working in the most difficult conditions.

Sperian Protection takes particular care in every production phase of the stainless steel wire (AISI 316 L): machining, manual assembly, welding of the links, all of which are of utmost importance for better user protection and a longer lifespan of the product.

Three glove families for greater flexibility and choice. The Sperian Chainmail glove range is divided into three separate product families:

CHAINEXTRA

Reversible steel or titanium mesh gloves with detachable wrist straps are for increased user comfort.



CHAINEXPERT

Our latest hi-tech development consists of steel or titanium mesh gloves with automatically adjustable steel wrist strap. Also available in an ultra-detectable mesh, this range highlights Sperian's manufacturing expertise.



CHAINEX 2000

Reversible steel-mesh gloves with a textile wrist strap. This range meets the needs of all users in the textile industry.



The main advantages of these protective gloves are:

- > Lightweight and ergonomic design for extended use without excessive fatigue.
- > High-quality materials and manufacturing know-how result in a strong and long-lasting product.
- > Continued research and development for better comfort and protection.

COLOUR CODED SIZE CHART

	EXTRA-EXTRA SMALL	0
	EXTRA SMALL	1
	SMALL	2
	MEDIUM	3
	LARGE	4
	EXTRA LARGE	5
	EXTRA-EXTRA LARGE	6

CARE AND MAINTENANCE

To ensure optimum protection, Sperian gloves should be kept in perfect condition for use. Use the correct amount of cleaning products and disinfectant to ensure that fabric and plastic straps do not deteriorate prematurely.

Only a manufacturer approved specialist is authorised to repair Sperian metal-mesh gloves. Any glove showing signs of abnormal wear or missing chainmesh must be replaced immediately or removed from service and sent to the Sperian Protection authorised repair agent.

CLEANING AND STORAGE

At least once a day, chainmesh gloves should be scrubbed vigorously in hot (50°C) soapy water, or in a mixture of hot water and detergent. They can also be cleaned in a washing machine. After washing, gloves should be rinsed in water at a minimum temperature of 82°C.

To disinfect, use only products approved by food safety authorities. After cleaning, store the gloves in a cool, dry, well ventilated place. Do not clean chainmesh gloves or aprons by knocking against a hard surface.

Exclusive features of Sperian Chainmesh Aprons and Tunics.

As well as gloves, we offer a range of aprons, jackets and tunics for use in the meat processing industry. Two main types of product are available:

ALUMINIUM PLATELET APRONS

LAMEX combines the outstanding resistance of aluminium with the flexibility created through a special assembly system.

The reliability of our ring mesh production guarantees you a lower cost of ownership compared to other products in the market.

Sperian quality ensures gloves and aprons require less repairs over the life of the product.

Ring mesh is made of rings of stainless steel, detectable stainless steel, or titanium. Each ring is individually welded to ensure maximum strength, flexibility and endurance.

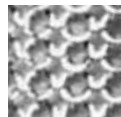
Aluminium plates in aprons and tunics are linked together by stainless steel rings, providing flexibility and endurance.



Lamex Platelets.
0.8mm thick
level 2 stab
protection.



ChainexLite
7.3mm dia rings
level 2 stab
protection.



ChainexTwo
4mm dia rings
level 2 stab
protection.

Materials

All manufacturing materials meet the legal requirements for food contact, are hygienic and easily washed/sanitised, suitable for meat processing. To ensure the best level of protection, always choose chainmesh products relevant to your safety hazard.

METAL-MESH APRONS

CHAINEXLITE and CHAINEXTWO feature excellent resistance and suppleness. The use of metal mesh results in a product which is both safe and ultra light.

> Stainless Steel

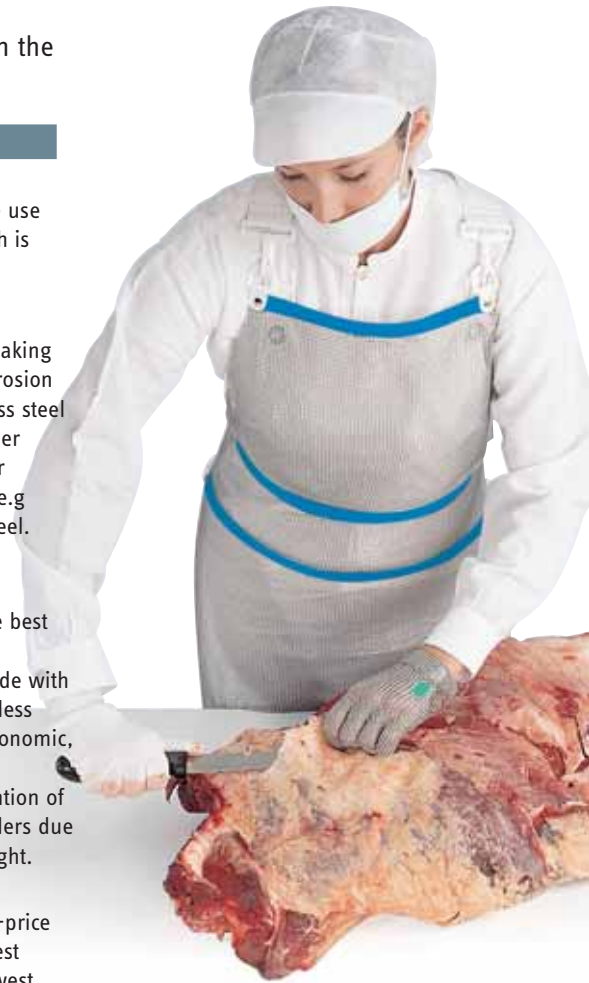
Combines extreme breaking load with the best corrosion resistance. The stainless steel grade is AISI 316L. Other grades can be used for specific requirements e.g detectable stainless steel.

> Titanium

Combines the highest breaking load with the best corrosion resistance. Protective clothing made with titanium weighs 40% less than steel and are ergonomic, providing an excellent solution for the prevention of musculoskeletal disorders due to carrying excess weight.

> Aluminium

Offers the best quality-price ratio, combining highest breaking load with lowest weight.



The Tuffshield® range provides superior cut resistance and low-linting properties.

Cut resistance combined with low-linting properties make Tuffshield® gloves excellent for food processing and industries where hand protection is essential, including: food

packaging, meat and poultry industries, restaurants, commercial fishing and canning.

Tuffshield® gloves provide:

- > Superior Cut protection - Contain 25% more HPPE Spectra-like fibre than other leading brands
- > Ergonomically Designed - For improved fit and greater productivity.
- > Powercuff™ System - Providing enhanced wrist protection.

APPLICATIONS AND PRODUCTS

The choice should be made in 2 steps - first the product range and style, then the size of the user:



MEAT - Deboning

- > Tunic Lamex
- > Tunic ChainexLite
- > Tunic ChainexTwo
- > Glove to shoulder ChainExpert



MEAT, POULTRY and FISH - trimming, cutting

- > Apron ChainexOne
- > Glove ChainExpert



Textile, Glass and Paper Industry

- > Glove CHAINEX® 2000



MEAT - Cutting

- > Apron Lamex
- > Apron ChainexLite
- > Apron ChainexOne
- > ChainExtra or ChainExpert glove with cuff



Supermarkets, Restaurants, Oyster Shucking:

- > Glove ChainExpert

ChainExpert Stainless Steel or Titanium chainmesh gloves with self adjusting wrist spring.

Featuring:

- > **SAFETY** - The "spring" style strap does not require press stud fastening, and promotes correct wear 100% of the time. There is no lateral slit on this glove, completely protecting the hand.
- > **COMFORT** - The spring-type steel strap has a natural elasticity which adapts and self adjusts itself to any wrist shape. As a result, CHAINEXPERT gloves provide exceptional comfort.
- > **EASE OF USE** - thanks to the natural elasticity of the spring this glove does not require adjustment.
- > **HYGIENE** - the 100% stainless steel guarantees a totally hypoallergenic glove, with no contamination risk from the fastening strap. It is bacteria-proof and easy to clean.
- > **TRACING** - each CHAINEXPERT glove is identified by a unique number. This enables traceability and individual glove allocation and record keeping.

Applications:

Meat works, meat process lines, kill floors, meat deboning, poultry works, fish processing.



CHAINEXPERT CHAIN GLOVES



The Chainex spring strap has natural elasticity, resisting stretching over time for ultimate protection.

- > Made from 100% stainless steel, hypoallergenic, easy to clean with no contamination risk from the fastening strap.
- > Self adjusting, spring style strap moulds itself to the hand without the need for a clip or any other type of closure.
- > Available in light weight titanium and detectable stainless steel.
- > ChainExpert Detectable includes the unique micro detect ability for even the smallest particles of metal rings.

CHAINEXPERT STAINLESS STEEL

253300XR3302 WRIST LENGTH, REVERSIBLE

253331XG0302 LONG CUFF, LEFT

253331XD0302 LONG CUFF, RIGHT

CHAINEXPERT DETECTABLE

253300XR3M02 WRIST LENGTH, REVERSIBLE

253331XG0M02 LONG CUFF, LEFT

253331XD0M02 LONG CUFF, RIGHT

CHAINEXPERT TITANIUM

253300XR3T02 WRIST LENGTH, REVERSIBLE

253331XG0T02 LONG CUFF, LEFT

253331XD0T02 LONG CUFF, RIGHT

CHAINEXPERT AMBIDEXTROUS GLOVE TO SHOULDER

253371XA0302 WITH PLASTIC HARNESS

253371XAS302 WITHOUT PLASTIC HARNESS

Note: For full glove part number, substitute X with the appropriate size between 0 and 6 (XS to XXL). Refer to page 18 for sizing.

CHAINEX® SPARES

Chainex spare parts include replacement straps and the Sergan glove elastic.

- > Replacement straps for the ChainExtra gloves allow quick and easy replacement without returning the glove for repair.
- > The Sergan has been designed for worker comfort and even better hand protection. The polyurethane elastic structure fits easily over any sizes chainmesh glove for a closer fit.



2AGSLX000A45 CHAINEXTRA WRIST STRAP SIZE 3

2AGSLX000A46 CHAINEXTRA WRIST STRAP SIZE 4

2AGSLX000A47 CHAINEXTRA WRIST STRAP SIZE 5

2XBMAN000A45 WRIST & ARM STRAP SIZE 3

2XBMAN000A46 WRIST & ARM STRAP SIZE 4

2XBMAN000A47 WRIST & ARM STRAP SIZE 5

2AGFDO000000 SERGAN WHITE TENSIONER

2AGFDO000A46 SERGAN BLUE TENSIONER

ChainExtra offers workers a complete glove range protecting against cuts and stabs.

Featuring:

- > **WEARER SAFETY** – The plastic strap of the CHAINEXTRA is notched so that the adjustment buckle cannot slide on the strap providing reinforced protection for the user. The lack of a lateral slit on this glove also means the wrist is completely protected.
- > **COMFORT** – The extra smooth plastic strap guarantees comfort and ergonomics.
- > **EASE OF USE** – The plastic strap is removable and can be easily changed by the user. This model can also be used on the left or on the right hand and is fully reversible.
- > **TRACEABILITY** – Each CHAINEXTRA glove is identified by a unique number. This enables traceability and individual glove allocation and record keeping.
- > **HYGIENE** – An anti-bacterial agent is included in the plastic strap to avoid any contamination. Stainless steel or plastic straps can be used when in contact with food.
- > **SIZING** – Each glove has an integral coloured disc which indicates the glove size at a glance.

Applications:

Meat works, meat process lines, kill floors, meat deboning, poultry works, fish processing.



CHAINEXTRA CHAIN GLOVES



ChainExtra combines safety, quality and comfort. Reversible with adjustable heavy duty straps and press stud fasteners.

- > Damaged straps can be easily and quickly changed over.
- > No side slit which may allow a knife to enter at wrist level.
- > Fitted with an identification tag for wearer personalisation.
- > Light-weight Titanium option – 1.5 times lighter than steel version.

CHAINEXTRA STAINLESS STEEL - AMBIDEXTROUS

254200XR0302 WRIST LENGTH

254231XR0302 GLOVE WITH 21CM ARMGUARD

254251XR0302 GLOVE WITH 15CM ARMGUARD

254241XR0302 GLOVE WITH 7.5CM ARMGUARD

CHAINEXTRA GLOVE TO SHOULDER

254271XD0302 RIGHT, WITH PLASTIC STRAPS

254271XG0302 LEFT, WITH PLASTIC STRAPS

CHAINEXTRA TITANIUM

254200XR0T02 WRIST LENGTH, AMBIDEXTROUS

254231XR0T02 GLOVE WITH 21CM ARMGUARD, AMBIDEXTROUS

Note: For full glove part number, substitute X with the appropriate size between 0 and 6 (XS to XXL). Refer to page 18 for sizing.

CHAINEX® 2000

Chainex 2000 Stainless Steel glove with textile strap for use in the textile and glass industries.



- > Extra smooth textile straps adapt to all wrist profiles.
- > Fully reversible glove can be used on left or right hands.
- > Wrist fastens with press stud and adjustable buckle.
- > High quality chainmesh requires less repairing.
- > Available in various lengths from wrist to long cuff.

250000XR0302 WRIST LENGTH

250041XR0302 7.5CM SHORT CUFF

250051XR0302 15CM MEDIUM CUFF

250031XR0302 21CM LONG CUFF

CHAINEXLITE® APRONS AND TUNICS



The ChainexLite offers workers with the ultimate in stab and cut protection against even the narrowest knives.

- > Ultra light and supple chainmesh for the ultimate wearer comfort.
- > Approved for level 2 stab protection.
- > Manufactured from high resistant .7mm stainless steel rings, guaranteeing a high resistance against perforations.
- > Easy quick fastening plastic straps offer multiple attachment points, and non-slip plastic adjustment for long term wear.

4CLT00JB0302 APRON 60 X 55CM • **4CLT00FB0302** APRON 76 X 55CM **4CLT00GB0302** CHAINEXLITE TUNIC 90 X 55CM

CHAINEXTWO® APRONS AND TUNICS



Shoulder straps shown are subject to change

ChainexTwo is made from a tight mesh of welded stainless steel rings, ensuring better protection against sharp knives.

- > Manufactured from a tight mesh (same as used on gloves).
- > Offers fantastic manoeuvrability and even weight distribution.
- > Easy to fit and adjust, ensuring worker compliance.
- > Lightweight, providing level 2 protection.
- > Available in tunic configurations, ensuring continuous protection around the body from neck to mid thigh.

4CSR00I5B302 APRON 76 X 49CM • **4CSR00K7B302** CHAINEXTWO APRON 82 X 54CM • **4CSRC0K7B302** TUNIC 82 X 54CM

LAMEX PLUS APRONS



Shoulder straps shown are subject to change

Lamex Plus offers small aluminium platelets for maximum flexibility and level 2 stab protection.

- > Small aluminium platelets 2x1.9cm offer maximum worker flexibility.
- > Ultimate in comfort, these small platelets protect areas such as the chest, abdomen, groin, and upper parts of the thighs.
- > Fastening is with adjustable and detachable plastic straps.
- > Available in two sizes to suit workers under and over 1.65mtrs.

4L0000JB0C01 60 X 55CM • **4L0000FB0C01** 76 X 55CM

CHAINEXTWO® HYBRID TUNIC



ChainexTwo chainmesh tunic with one titanium sleeve, ideal when using knives, cutting and/or punching tools.

- > Plastic back fastening system for quick attachment and adjustment.
- > 2 plastic belts, adjustable and removable.
- > Titanium used for the sleeve, offering outstanding ergonomics, without stress on the user's neck due to the mail weight.
- > Torso made of stainless steel mesh offering level 2 protection.
- > Sleeve for wrist to chest protection, offering protection level 1.
- > Patented ChainExpert type wrist spring.

4CSRC3GXB302

The Tuffshield® series provides superior cut resistance and low-linting properties.

Cut resistance combined with low-linting properties make HPPE fibre gloves excellent for food processing and other industries where hand protection is essential.

Featuring:

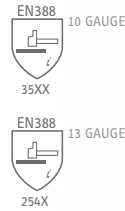
- > SUPERIOR CUT PROTECTION - Sperian utilises a proprietary engineered fibre process to incorporate up to 25% more Spectra-like fibre than other leading brands. Made with HPPE and abrasion-resistant filament around a fibreglass core, this fibre is light-weight, low-lint, and does not easily absorb liquids.
- > ERGONOMICALLY DESIGNED FOR BETTER FIT AND GREATER PRODUCTIVITY - Even in the most demanding environments, HPPE fibre gloves can be worn hour after hour, featuring lightweight, flexible and breathable material.
- > PROVIDING ENHANCED WRIST PROTECTION - The unique HPPE system prevents cuff roll down or blow-out from repeated laundering. PowerCuff™ elastic features enhanced chemical resistance with colour coding for easy sorting.

Applications:

Food processing, food packaging, meat and poultry industries, restaurants, commercial fishing and canning.



TUFFSHIELD® GLOVES



The Tuffshield® range offers users high performance, cut resistant products which provide extreme flexibility and breathability. The unique PowerCuff™ system ensures enhanced wrist protection.

- > Utilises up to 25% more HPPE fibre in every glove over leading market brands making for enhanced performance.
- > HPPE Spectra-like fibre is low-lint, chemical resistant and 10 times stronger than steel on an equal weight basis.
- > The seamless knit provides optimum fit without chafe or restriction of hand or finger movement.
- > Withstands repeated laundering, bleaching or disinfecting without harm.
- > Cuffs are colour coded for sizing and rapid sorting after laundering.

PF10 WHITE MEDIUM WEIGHT SIZES XS,S,M,L,XL

PF13 WHITE LIGHTWEIGHT SIZES XS,S,M,L,XL

PF13-GY GREY LIGHTWEIGHT SIZES XS,S,M,L,XL

LPFSL-21-AC 21" LIGHTWEIGHT ARMGUARD

When life may be in danger.

The Sperian Protection range of high voltage electrical insulating gloves include a full range of latex insulating gloves, and composite gloves.

Insulating gloves are non-supported and must be worn in conjunction with a suitable leather overglove. Composite gloves are manufactured from a latex base and covered with an outer layer of polychloroprene, and are especially recognised for their durability and dexterity.

Electrical gloves must be used to protect from accidental contact with charged systems while working. Sperian's specific know-how and expertise in the field of latex treatment has led to the design of high performance electrical gloves. Sperian offers a full range of products for every application involving electric currents from 500 to 36000 volts. Whether for high voltage, medium voltage or low voltage work, the Sperian range offers suitable products.

The design and manufacture of gloves for work with electrical currents is a highly complex task. It involves the provision of a maximum level of protection against the potentially fatal hazard of electrocution, whilst maintaining good dexterity.

A pair of gloves has a limited life span. It is therefore necessary to test the gloves insulating properties regularly and replace when necessary. It is essential to check with your local Worksafe or Workcover government authority for the regularity of electrical glove testing.

Class	Voltage	Category	Resistant to
00	<500V	A	Acid
0	<1000V	H	Oil
1	<7500V	Z	Ozone
2	<17000V	R	Acid + Oil + Ozone
3	<26500V	C	Extreme low temperature
4	<36000V		



STANDARDS

The effect of the harmonisation of the 2 European Standards:

EN 60-903 (latex gloves) and EN 50-237 (composite gloves) have resulted in a New International Standard: IEC 60 903 – 2nd edition 2002-08. All Sperian Electrosoft gloves comply to the latest International Standard.

The test requirements for Sperian hi-tech electrical gloves:

Electrosoft natural latex gloves are designed and manufactured by our Sperian production unit in Autun (France), which is certified to ISO 9001 : 2000 by the French Quality Assurance Association (AFAQ).

In order to meet these specifications, our gloves undergo rigorous testing:

- > Visual and dimensional checks.
- > Dielectric tests (automatic-test cabins verified periodically by the Central Laboratory for Electrical Industries - LCIE).
- > Additional spot checks: 1. Mechanical tests. 2. Dielectric tests after packaging (immersion for 16 hours and kept in a tank for 7 days at 70° C).
- > A certificate of compliance, which includes the test results of the relevant batch(es), is provided with each glove delivery.
- > Tests on gloves with special properties: (The majority of Sperian gloves comply with RC category requirements).

RECOMMENDATIONS FOR USE

CAUTION: to remain effective, INSULATING GLOVES must be used according to the following rules.

- > Storage: Store in original packaging. Do not compact or fold. Do not expose to heat sources (e.g. sunlight, radiators, artificial light). Store between 10°C and 21°C, 35°C max.
- > Inspection: Before each use, carry out a visual inspection and check the glove via inflation. Any puncture or perforation makes the glove unusable.
- > Precautions: Do not expose to chemicals or solvents that may cause deterioration, for example oil, grease, turpentine, white spirit, paraffin or any strong acid. Do not use the glove when damp.
- > Cleaning: Use water and soap. Dry below 65°C with ambient humidity.
- > Marking: The date of the electrical test carried out at the end of production and the batch number appear on each glove bag to ensure product traceability. We recommend not using gloves older than one year from date of manufacture without prior testing.
- > Selection: Always define a voltage of use to select the adequate class of gloves (from 00 to 4). Only wear tested and approved insulating gloves.

Electrosoft Latex Insulating gloves

A full range of Electrosoft Latex gloves is available from Class 00 to Class 4, for working voltages up to 36,000V.

- > Non-supported latex insulating gloves must be worn in conjunction with a suitable leather overglove to provide mechanical protection from abrasion, cut, tear and perforation.
- > The natural latex glove can be supplied with either rolled or cut edges, depending on user requirements.

The natural latex base offers excellent dielectric characteristics. The thickness of the glove allows a high degree of dexterity while offering protection up to 36,000V. An ergonomic design combined with a lightly powdered interior increases comfort by providing additional softness and allows the glove to be put on and taken off very easily.

Rolled edge gloves are two-tone, comprising a black interior and a beige exterior to allow any damage to the glove to be identified immediately.

Electrosoft overgloves



Overgloves are used to provide mechanical protection from abrasion, cut, tear and perforation. Three different overgloves are available for low, medium and high voltage.

ELECTROSOFT LATEX GLOVES

- 00 <500V
- 0 <1000V
- 1 <7500V
- 2 <17000V
- 3 <26500V
- 4 <36000V



OVERGLOVES



Electrosoft Latex gloves used in conjunction with leather overgloves provide workers with optimum protection.

- > Meets all protection classes from 00 to 4.
- > Natural latex base is available with either cut or rolled edges.
- > Wear with leather overgloves to prevent cutting or tearing.
- > Available in multiple sizes to suit most electrical applications.

Overgloves are used to provide mechanical protection from abrasion, cut, tear and perforation.

- > Cowhide silicone grain leather is flexible, water repellent and provides mechanical protection.
- > Velcro® fastening tabs allow the glove to be worn securely.
- > Protects Electrosoft Latex gloves from mechanical hazards.
- > 1.1mm thick.
- > 31 cm long.

CUT EDGE

PART NO.	CLASS	VOLTAGE	LENGTH	SIZE	CATEGORY	COLOUR
2091903-SIZE	00	500	360	7-11	AZC	BEIGE
2091907-SIZE	0	1,000	360	8-11	RC	BEIGE
2091906-SIZE	0	1,000	410	8-11	RC	BEIGE
2091911-SIZE	1	7,500	410	9-11	RC	BEIGE
2091912-SIZE	1	7,500	360	9-11	RC	BEIGE
2091921-SIZE	2	17,000	360	9-11	RC	BEIGE
2090221-SIZE	2	17,000	410	9-11	RC	BEIGE
2091931-SIZE	3	26,500	360	9-11	RC	BEIGE
2090231-SIZE	3	26,500	410	9-11	RC	BEIGE
2091941-SIZE	4	36,000	410	10 & 11	AZC	BEIGE

ROLLED EDGE

PART NO.	CLASS	VOLTAGE	LENGTH	SIZE	CATEGORY	COLOUR
2091908-SIZE	0	1,000	360	9-11	RC	BEIGE
2091913-SIZE	1	7,500	410	9-11	RC	BEIGE
2091922-SIZE	2	17,000	410	9-11	RC	BEIGE
2091932-SIZE	3	26,500	410	9-11	RC	BEIGE
2091942-SIZE	4	36,000	410	9-11	AZC	BEIGE

REFERENCE	CLASS	VOLTAGE	LENGTH
2012897-SIZE	LOW VOLTAGE	2,5 KV/5 KV	310MM
2012898-SIZE	MEDIUM VOLTAGE	10 KV	310MM
2012899-SIZE	HIGH VOLTAGE	20 KV/30 KV	310MM

Electrosoft Composite Gloves

The range of composite gloves is manufactured from a natural latex base covered with an outer layer of polychloroprene that combines mechanical resistance and comfort with a high protection level. Composite gloves offer anatomical shaping for ease of movement and increased comfort.

Composite gloves are especially recognised for their durability and dexterity! The Electrosoft Composite range is available both unlined and lined.

Electrosoft Composites Unlined

- > Cotton flock interior (for Class 00 and 0): high density cotton is sprayed on the inside of the glove. Putting on and taking off the glove is effortless. The softness of the cotton combined with its perspiration absorption properties significantly increases wearer comfort.
- > Patterned finished: good grip in damp conditions; particularly useful for outdoor work.
- > Manufacturing technology: produces a supple glove ideal for work with electrical currents up to 17 000 volts, in damp or greasy conditions.
- > Short circuit electric arc protection: the glove material structure exhibits excellent characteristics in case of short circuit electric arc.

Electrosoft Composites lined

Composites are made of natural dielectric latex on a cotton interlock base which increases the robustness as well as the comfort of the glove while providing excellent insulating qualities. The anatomical shape of the gloves provide a high level of dexterity and flexibility. This results in long service life under extreme conditions of use.



ELECTROSOFT COMPOSITES

- 00 <500V
- 0 <1000V
- 1 <7500V
- 2 <17000V

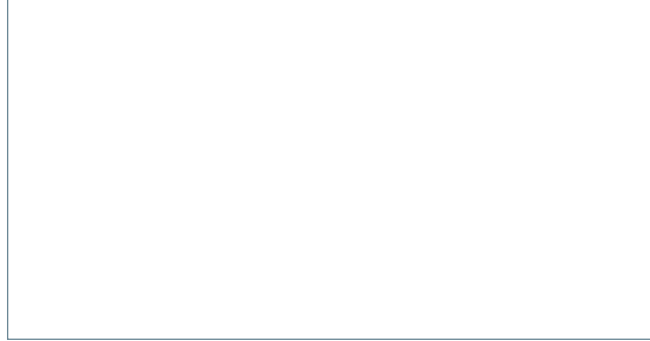


Cotton flock interior (for Class 00 and 0). The softness of the cotton combined with its perspiration absorption properties significantly increases wearer comfort.

- > Patterned finished provides good grip in damp conditions; particularly useful for outdoor work.
- > Supple glove ideal for work with electrical currents up to 17,000 volts, in damp or greasy conditions.
- > Glove material structure exhibits excellent characteristics providing protection in case of short circuit electric arc.

PART NO.	CLASS	VOLTAGE	LENGTH	SIZE	CATEGORY
2092001-SIZE	00	500	360	7-11	RC
	LINED				
2092012-SIZE	00	500	360	7-11	RC
	FLOCK LINED/GRIP PATTERN				
2092013-SIZE	00	500	410	7-11	RC
	FLOCK LINED/GRIP PATTERN				
2092015-SIZE	0	1 000	360	7-11	RC
	FLOCK LINED/GRIP PATTERN				
2092016-SIZE	0	1,000	410	7-11	RC
	FLOCK LINED/GRIP PATTERN				
2092017-SIZE	1	7,500	410	9-11	RC
	NON FLOCKED				
2092027-SIZE	2	17,000	410	9-11	RC
	NON FLOCKED				
2092011-SIZE	00	500	360	7-11	RC
	NON FLOCKED, CHLORINATED				
2092014-SIZE	0	1 000	360	7-11	RC
	NON FLOCKED, CHLORINATED				





SPERIAN PROTECTION AUSTRALIA PTY LTD

43 Garden Boulevard,
Dingley,
Victoria 3172
Australia

Tel: 1300 139 166

Fax: 1300 362 491

New Zealand

Tel: 0800 322 200