

IL13Ra1, Fc/His-tag

Interleukin 13 Receptor alpha 1

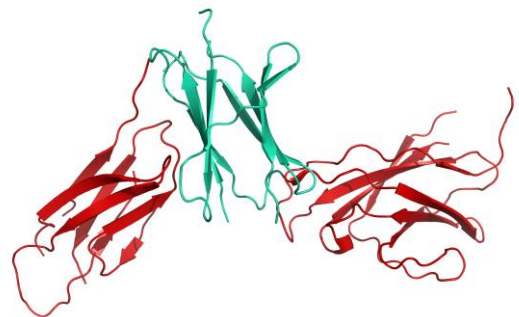
Cat. no. P2020-134

Product Information

Protein:	IL13Ra1, Fc/His-tag (~ 66.0 kDa)
Uniprot#:	P78552
Sequence:	MGGGGAAPTETQPPVTNLSVSVENLCTVIWTVNPPPEGASSNCSLWYFSHFQDKQDKKIAPE TRRSIEVPLNERICLQVGSQCSTNESEKPSILVEKICISPPPEGDPESAVTELQCIWHNLSY MKCSWLPGRNTSPDNTYLYYWHRSLEKIHQCENIFREGQYFGCSFDLTQVVDSSFEQHS VQIMVKDNAGKIKPSFNIVPLTSRVKPDPPHIKNSLHNDLLYVQWENPQNFISRCLFYE VEVNSQTETHNVFYVQEAECENPEFERNVENTSCFMVPGVLPDNLNTRIRVKTNLKCY EDDKLWSNWSQEMSIGKKRST
	Methionine at pos. 1 might be present due to cloning constraints, C-terminal His-tag and Fc fusion not shown in sequence.
Source:	Recombinantly expressed in HEK293.
Tag(s):	Fc/His-tag, C-terminal
Purification:	Purified by affinity chromatography and subsequent buffer exchange.
Formulation:	PBS; pH 7.4. Liquid, stored and shipped at -80 °C.
Purity:	> 95% as determined by SDS-PAGE
Concentration:	Will be determined by BCA-Assay.
Long-term storage:	No recommendations.
Comment:	Protein migrates at higher molecular weight during SDS-PAGE due to posttranslational modifications.

Background Information:

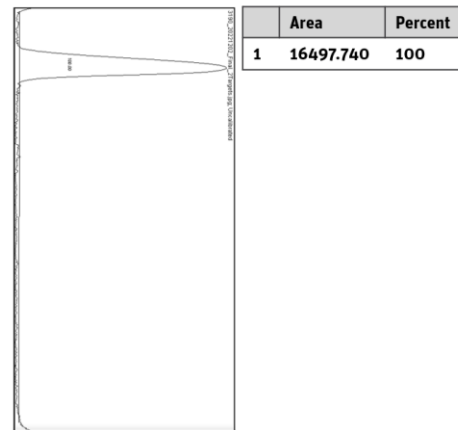
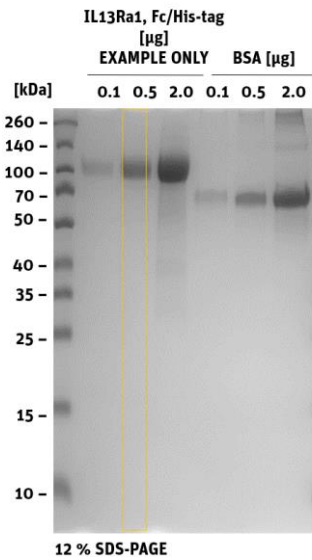
Interleukin 13 Receptor alpha 1 (IL13RA1) is part of the interleukin 13 (IL-13) receptor complex expressed on the surface of various cells, including B cells, mononuclear phagocytes, dendritic cells, eosinophils, basophils,



Structural model of IL13Ra1

Product Information

Quality Information (provided for each lot):



SDS-PAGE/Coll.Coomassie

Histogram (of marked lane in gel picture)