

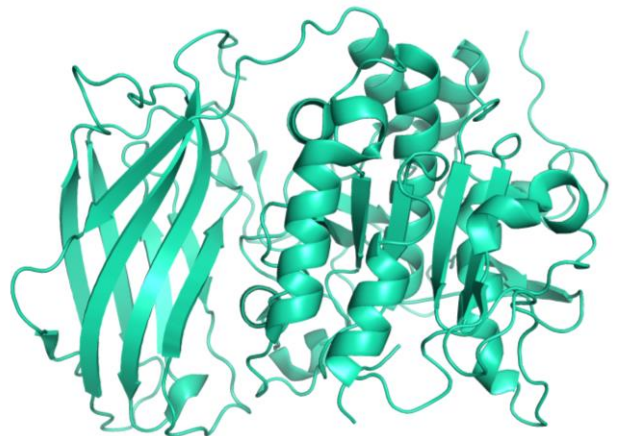
Product Information

Protein:	Furin, GFP/His-tag (~ 103.7 kDa)
Uniprot#:	P09958
Sequence:	<pre>MQKVFTNTWAVRIPGGPAVANSVARKHGFLNLGQIFGDYYHFWHRGVTKRSLSPHRPHS RLQREPQVQWLEQQVAKRRTKRDVYQEPTDPKFPQQWYLSGVTQRDLNVKAAWAQGYTGH GIVVSILDDGIEKNHPDLAGNYDPGASFVNDQDPDPQPRYTQMNDNRHGTRCAGEVAAV ANNGVCGVGVAYNARIGGVRMLDGEVTDAVEARSLGLNPNHIHSASWGPEDDGKTVDG PARLAEAAFFRGVSQGRGGLGSIFVWASGNGGREHDSNCNCDGYTNSIYTLSSSATQFGN VPWYSEACSSTLATTYSSGNQNEKQIVTTDLRQKCTESHTGTSASAPLAAGIALTLEAN KNLTWRDMQHLVVQTSKPAHLNANDWATNGVGRKVSHSYGYLLDAGAMVALAQNWTTVA PQRKCIIDILTEPKDIGKRLEVRKVTACLGEPNHITRLEHAQARLTLNRRGDLAIHL VSPMGTRSTLLAARPHDYSADGFNDWAFMTTHSWDEDPSGEVWLEIENTSEANNYGLTK FTLVLYGTAPEGLPVPPESSGCKLTSSQACVVCEEGFSLHQKSCVQHCPPGFAPQVLDT HYSTENDVETIRASVCAPCHASCATCQGPALTDCLSCPSHASLDPVEQTCSRQSQSSRES PPQQQPPRLPPEVEAGQRLRAGLLPSHLPE</pre>
	Methionine at pos. 1 present due to cloning constraints, C-terminal GFP-fusion and His-tag not shown in sequence.
Source:	Recombinantly expressed in HEK293 cells.
Tag(s):	GFP/His-tag, C-terminal
Purification:	Purified by affinity chromatography and subsequent buffer exchange.
Formulation:	PBS; pH 7.4. Liquid, stored and shipped at -80 °C.
Purity:	> 85 % (will be determined by densitometry of Coomassie stained gel, example next page)
Concentration:	Will be determined by BCA-Assay.
Long-term storage:	No recommendations.
Comment:	Protein migrates at higher molecular weight during SDS-PAGE due to posttranslational modifications.

Background Information:

Furin, also known as paired basic Amino acid Cleaving Enzyme (PACE) is a ubiquitous subtilisin-like proprotein convertase with a minimal cleavage site of Arg-X-X-Arg^v. However, the enzyme prefers the site Arg-X-Lys/Arg-Arg^v.

It is the major processing enzyme of the secretory pathway and is localized in the trans-golgi network where it functions to cleave other proteins into their mature/active forms. Substrates of Furin include blood clotting factors, serum proteins and growth factor receptors such as the insulin-like growth factor receptor but also viral proteins like the SARS-CoV-2 Spike protein. Furin is inhibited by EGTA, α 1-Antitrypsin Portland and polyarginine compounds.



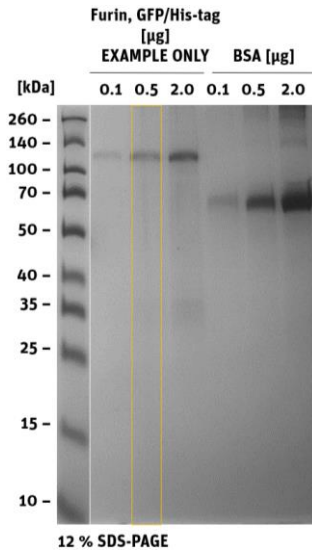
Structural model of Furin, GFP/His-tag

Furin, GFP/His-tag

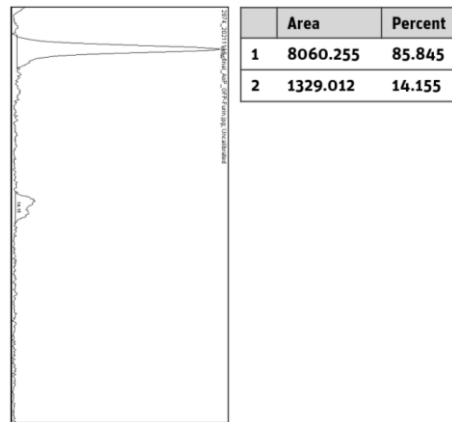
Cat. no. P2020-119

Product Information

Quality Information (provided for each lot):



SDS-PAGE/Coll.Coomassie



Histogram (of marked lane in gel picture)