



INSTALLATION INSTRUCTIONS

SHACKLE BRACKET TOW HOOK KIT

For 67-87 (up to '91 K5 / Suburban / Crew) GM trucks

CARELESS INSTALLATION AND OPERATION OF THIS PRODUCT CAN RESULT IN SERIOUS INJURY OR EQUIPMENT DAMAGE. READ AND UNDERSTAND ALL SAFETY PRECAUTIONS AND OPERATING INSTRUCTIONS BEFORE INSTALLING AND OPERATING THIS PRODUCT.

This guide identifies potential hazards and has important safety messages

WARNING, CAUTION, NOTICE, & Note are signal words that identify the level of hazard. These are outlined below:

WARNING signals a hazard that could cause serious injury or death if you do not follow recommendations.

CAUTION signals a hazard that may cause minor to moderate injury if you do not follow recommendations.

NOTICE signals to call attention to important information

Note: to emphasize general information worthy of special attention

CAUTION

PLEASE WORK SAFELY

CAUTION

BEFORE DRILLING INTO ANY VEHICLE CHECK THAT THE AREA TO BE DRILLED IS CLEAR OF ANY WATER LINES, FUEL LINES, ELECTRICAL WIRING, OR KEY MECHANICAL EQUIPMENT. ALWAYS USE CAUTION WHEN DRILLING OR CUTTING ON A VEHICLE.

WARNING

FAILURE TO INSPECT THE AREA TO BE DRILLED MAY RESULT IN VEHICLE DAMAGE, OR PERSONAL INJURY.

WARNING

WEAR APPROPRIATE PPE WHEN INSTALLING THIS KIT: GLOVES, HEARING PROTECTION, SAFETY GLASSES/GOGGLES.

Note:

Please read these instructions completely before installation of this kit.

WARNING

As these trucks are 30 to 50+ years old, before installation of this kit the front frame rail ends should be inspected to ensure rigidity and ability to securely hold this product. If there are rust holes or there is other physical damage to frame then frame should be professionally repaired before installation of this product.

Thank you for your purchase of the **Engineered Vintage Shackle Bracket Kit**

1967-72 SHACKLE BRACKET install

These shackle brackets are designed to bolt onto your 67-72 GM truck frame behind the bumper and provide a solid tow point at the front of vehicle. These will fit 2wd & 4wd trucks of these years

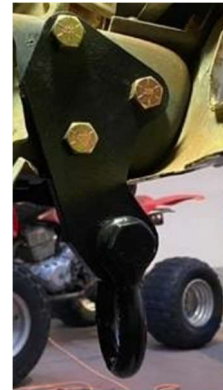
For trucks with factory tow hook holes:

Using (3) 5/8-11 x 2" long bolts, bolt shackle bracket on outside of frame rails onto truck as shown.

Ensure that shackle bracket clears bottom of bumper – while this is rare, it is possible that with variation/age of these trucks that shackle bracket or bumper will need to be modified.

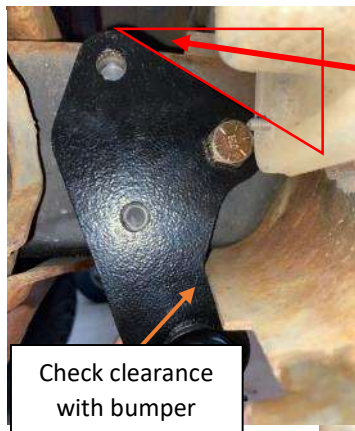
Washers should be installed on inside of frame rail. Torque 5/8 bolts to 100 ft-lbs.

Repeat for opposite side



For trucks without factory tow hook holes:

Install shackle bracket onto truck using front hole as shown – pull shackle bracket to rear of front slotted hole (towards rear of truck) make sure that shackle bracket clears bottom of front bumper. Angle of top of bracket (from top of frame) should be approx. 30°. Once shackle bracket is in correct location, bolt



30-degrees

Note 1/8" drilled pilot holes



it tightly to frame with front bolt to mark the location of the two rear holes.



Drilling operations can cause flying chips. WEAR SAFETY GOGGLES. Flying chips can cause eye injury.



Cutting metal – can cause sparks, chips, etc... Use correct personal protective equipment & make sure area behind drilling location is free of hazards.

Use a 5/8" diameter drill bit & drill and carefully use the shackle bracket as a guide to mark the center of the two rear holes. Drill into the truck frame slightly until the centers of the rear hole locations are apparent. Remove the shackle bracket.

Next, starting with a 1/8" drill bit, drill the frame using larger and larger drill bits until finishing each hole with a 5/8" drill bit. Once completed, mount the shackle brackets. Install washers on inside of frame and then lock washers (or loc nuts) and nuts. Torque 5/8 bolts to 100 ft-lbs. Repeat for other side.

1973-80 SHACKLE BRACKET install

These shackle brackets are designed to bolt onto your 73-80 GM truck frame behind the bumper and provide a solid tow point at the front of vehicle. These will fit 2wd & 4wd trucks of these years

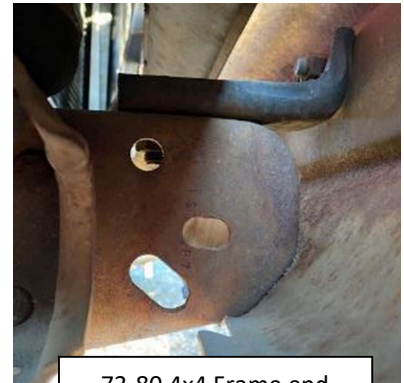
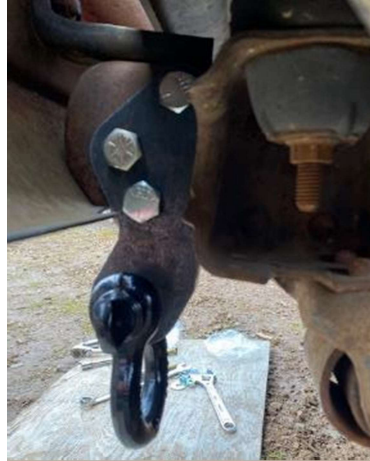
For trucks with factory tow hook holes:

Using (3) 1/2-13 x 2" long bolts, bolt shackle bracket on outside of frame rails onto truck as shown.

Ensure that shackle bracket clears bottom of bumper – while this is rare, it is possible that with variation/age of these trucks that shackle bracket or bumper will need to be modified.

Washers should be installed on inside of frame rail. Torque 1/2 bolts to 80 ft-lbs.

Repeat for opposite side



73-80 4x4 Frame end with factory holes

For 73-80 trucks without factory tow hook holes (2wd trucks, etc...)

Install shackle bracket onto truck using front slotted frame hole. Install a single 1/2" bolt through shackle bracket and frame with washer and nut through front slotted frame hole and finger tighten.

Pull shackle bracket toward rear of truck until it contacts front of core support mount. Check shackle bracket clearance with bottom of bumper. Note that angle of shackle top will be at approximately 45° from horizontal.

Once fitment is checked, frame is ready to drill.



WARNING

Drilling operations can cause flying chips. WEAR SAFETY GOGGLES. Flying chips can cause eye injury.



CAUTION

Cutting metal – can cause sparks, chips, etc... Use correct personal protective equipment & make sure area behind drilling location is free of hazards.

Use a 1/2" diameter drill bit & drill and carefully use the shackle bracket as a guide to mark the center of the two mounting holes. Drill into the truck frame slightly until the centers of the rear hole locations are apparent. Remove the shackle bracket.

Next, starting with a 1/8" drill bit, using the center of the marked holes, drill the frame using larger and larger drill bits until finishing each hole with a 1/2" drill bit. Once completed, mount the shackle brackets. Install washers on inside of frame and then lock washers (or loc nuts) and nuts. Torque 1/2 bolts to 80 ft-lbs. Repeat for other side.

1981-87 (81-91 Blazer / Suburban / Crew Cab) **SHACKLE BRACKET install**

These shackle brackets are designed to bolt onto your 81-87 GM truck & 81-91 GM Blazer, Suburban, & Crew Cab behind the bumper and provide a solid tow point at the front of vehicle. These will fit 2wd & 4wd trucks – with exceptions noted below

NOTICE

Shackle brackets will not fit with factory under bumper air-dam – it is not recommended to run factory air-dam with shackle brackets. The air dam can be removed by unbolting from bumper.

NOTICE

Note that Shackle Brackets will not fit these years of C30 trucks without modification of core support frame mount or grinding chamfer into shackle brackets (see end of these instructions for modifications needed to install onto C30 trucks)

NOTICE

There are two different variations of bumper brackets on these trucks (see pic above, with slot & without slot) The mounting directions for each style are below:

For trucks with bumper bracket with slot:

Remove the two bolts that hold the bumper bracket onto frame

Using (3) ½-13 x 2” long bolts, bolt shackle bracket through bumper bracket and frame onto truck as shown.

Ensure that shackle bracket clears bottom of bumper – while this is rare, it is possible that with variation/age of these trucks that shackle bracket or bumper will need to be modified.

Washers should be installed on inside of frame rail. With variation / slop in center hole, middle bolt may require two washers (on each side) to ensure proper and secure fit-up.

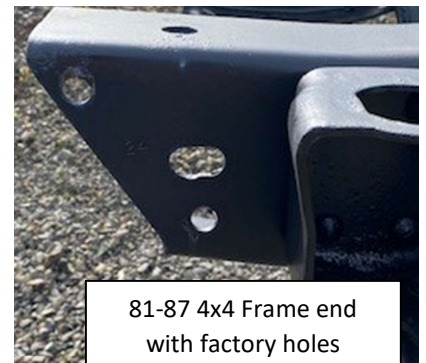
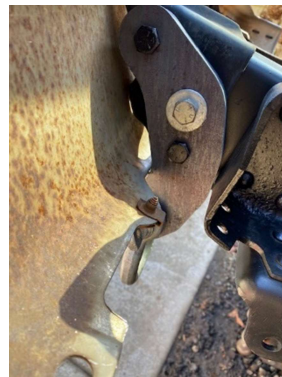
Torque 1/2 bolts to 80 ft-lbs. Repeat for opposite side

Bumper bracket variations



81-87 (to '91 Blazer/
Suburban/ Crew) Bumper
bracket **without** slot

81-87 (to '91 Blazer/
Suburban/ Crew)
Bumper bracket **with**
slot



81-87 4x4 Frame end
with factory holes

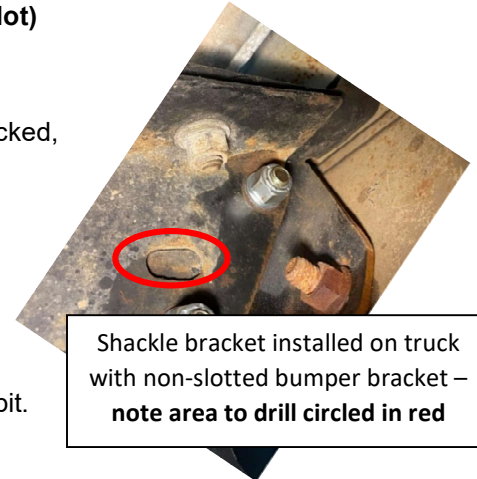
For trucks with factory tow hook holes (bumper bracket does not have slot)

Install shackle bracket onto truck using top and bottom holes and tighten.

Check shackle bracket clearance with bottom of bumper. Once fitment is checked, bumper bracket is ready to drill.

Use a 1/2" diameter drill bit & drill and carefully use the shackle bracket as a guide to mark the center of the center mounting hole. Drill into the truck frame slightly until the centers of the hole location is apparent. Remove the shackle bracket.

Next, starting with a 1/8" drill bit, using the center of the marked holes, drill the frame using larger and larger drill bits until finishing each hole with a 1/2" drill bit.



Shackle bracket installed on truck with non-slotted bumper bracket – note area to drill circled in red



Drilling operations can cause flying chips. WEAR SAFETY GOGGLES. Flying chips can cause eye injury.



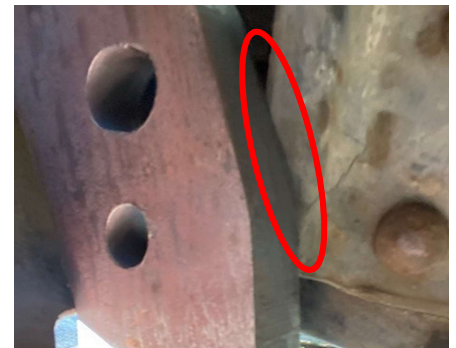
Cutting metal – can cause sparks, chips, etc... Use correct personal protective equipment & make sure area behind drilling location is free of hazards.

Once completed, mount the shackle brackets. Install washers on inside of frame and then lock washers (or loc nuts) and nuts. Torque 1/2 bolts to 80 ft-lbs. Repeat for other side.

Installation onto 81-87 C30 trucks:

On the 81-87 C30 trucks (up to '91 C30 crew cab) the distance between the frame core support mount and bottom of bumper is tight. This creates an interference area. The area circled in red must be modified for the Engineered Vintage shackle bracket to fit. Grinding/cutting of the core support mount as well as chamfering of the shackle bracket will be required in the circled area.

If you successfully mount a set of these on a C30 truck please send us pics! We would love to see them!



Driver side frame area shown
Interference area circled in red

Recommended care:

Regular washing with fresh water and mild car wash detergents followed by rinsing and drying with a soft towel is the best minimum care. Beyond that, any cleaner/wax recommended for automotive finishes will work well to remove minor stains and scuffs, enhance the shine and provide protection.

Thank you and check out our other products at: **EngineeredVintage.com**

