



# INSTALLATION INSTRUCTIONS

1980-86 Ford Truck 'GOAT' BUMPER

These instructions cover installation for 1980-86 Ford Truck & 1980-86 Ford Bronco

Part Number: 80-86 FORD GOAT

**CARELESS INSTALLATION AND OPERATION OF THIS PRODUCT CAN RESULT IN SERIOUS INJURY OR EQUIPMENT DAMAGE. READ AND UNDERSTAND ALL SAFETY PRECAUTIONS AND OPERATING INSTRUCTIONS BEFORE INSTALLING AND OPERATING THIS PRODUCT.**

This guide identifies potential hazards and has important safety messages

**WARNING, CAUTION, NOTICE, & Note** are signal words that identify the level of hazard. These are outlined below:

**⚠ WARNING** signals a hazard that could cause serious injury or death if you do not follow recommendations.

**CAUTION** signals a hazard that may cause minor to moderate injury if you do not follow recommendations.

**NOTICE** signals to call attention to important information

**Note:** to emphasize general information worthy of special attention

**CAUTION**

**PLEASE WORK SAFELY**

**CAUTION**

**BEFORE DRILLING INTO ANY VEHICLE CHECK THAT THE AREA TO BE DRILLED IS CLEAR OF ANY WATER LINES, FUEL LINES, ELECTRICAL WIRING, OR KEY MECHANICAL EQUIPMENT. ALWAYS USE CAUTION WHEN DRILLING OR CUTTING ON A VEHICLE.**

**⚠ WARNING**

**FAILURE TO INSPECT THE AREA TO BE DRILLED MAY RESULT IN VEHICLE DAMAGE, OR PERSONAL INJURY.**

**⚠ WARNING**

**WEAR APPROPRIATE PPE WHEN INSTALLING THIS KIT: GLOVES, HEARING PROTECTION, SAFETY GLASSES/GOGGLES.**

**Note:**  
Thank you for your purchase of the **Engineered Vintage 'GOAT' bumper**

Please read these instructions completely before installation of this kit.

These instructions are intended to convey information on how to best mount this kit onto your truck.

This kit is designed to bolt into 1980-86 Ford pickups & 1980-86 Ford Bronco

This kit was designed to mount a variety of winch models onto these trucks.

***'GOAT' bumper shown on  
1986 4x4 F350 crew in raw  
steel***

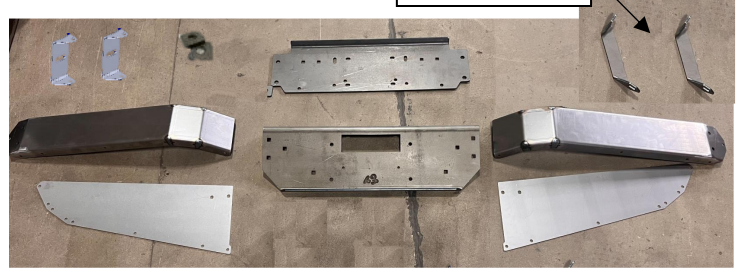


***'GOAT' bumper shown on  
1986 4x4 F350 crew in raw  
steel***



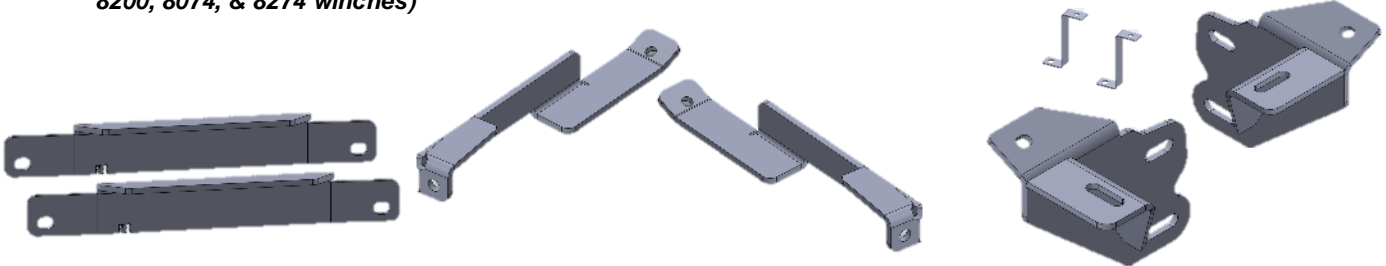
## 'GOAT' Bumper PARTS LIST

8274 Winch  
braces\*



QTY	DESCRIPTION
-----	-------------

- |     |   |
|-----|---|
| -1- | FRAME BRACKET WELDED, DRIVER (LH)   |
| -1- | FRAME BRACKET, WELDED, PASSENGER (RH)   |
| -1- | INNER FRAME REINFORCEMENT, DRIVER (LH)  |
| -1- | INNER FRAME REINFORCEMENT, PASSENGER (RH)   |
| -2- | BUMPER BRACE  |
| -1- | CENTER WINCH BASE   |
| -1- | CENTER WINCH FACE   |
| -2- | BUMPER WINGS  |
| -2- | BUMPER WING TOP PLATES  |
| -2- | SPACER PLATES, 1/4" THICK   |
| -1- | OUTER BUMPER BRACE, RH  |
| -1- | OUTER BUMPER BRACE, LH  |
| -2- | OUTER BUMPER BRACE BRACKET  |
| -2- | TOP PLATE SUPPORT   |
| -2- | 8274 WINCH BRACE* ( <i>*not included unless selected at purchase – only used with WARN 8200, 8074, &amp; 8274 winches</i> ) |



## HARDWARE LIST:

ID	Qty	Description	Where Used
A	10	½-13 UNC GR 8 BOLTS, 2" LONG	(4) used to mount frame brackets to front of truck frame (front holes in truck frame, 2 per side) (2) used to mounter inner frame reinforcement in frame (1 per side) (4) used to mount center winch base to frame brackets
B	4	½-13 UNC GR 8 BOLTS, 1.5" LONG	(2) used to mount outer bumper braces to outer bumper brace brackets (2) extra bolts
C	28	1/2" washers	Use (2) per 1/2" bolt
D	14	1/2" nyloc nuts	Use (1) per 1/2" bolt
E	12	7/16 x 1" CARRIAGE BOLTS	(6) used to mount bumper wings to bumper face plate  (4) used to mount 8274 bracket between bottom winch plate & bumper face plate  (2) used to mount center winch face to center winch base
F	10	7/16" washers	Use (1) per 7/16" bolt (washers are not used on 8274 bracket bolts)
G	12	7/16" nyloc nuts (or lock washers & nuts)	Use (1) per 7/16" bolt
H	20	5/16 BOLTS	(18) used to mount bumper wing tops to bumper wings & wing support
			(2) used to mount bumper stiffener bracket inside bumper wings
I	20	5/16" washers	Use (1) per 5/16" bolt
J	20	5/16" nyloc nuts (or lock washers & nuts)	Use (1) per 5/16" bolt

## Installation prep



**As these trucks are ~40 years old, before installation of this kit the front frame rail ends should be inspected to ensure rigidity and ability to securely hold this winch mount. If there are rust holes or there is other physical damage to frame then frame should be professionally repaired before installation of this product.**

If holes outlined in installation instructions are not present in your truck frame, it may be necessary to drill holes in truck frame.



**Drilling operations can cause flying chips. WEAR SAFETY GOGGLES. Flying chips can cause eye injury.**

Recommend spraying all bumper hardware, with penetrating oil or “bolt loosening spray” the night before installation to ease bumper removal from truck. Bumper hardware can be difficult to remove with rust, road grime, etc accumulated over time on truck.

Remove the front bumper from truck.

Once bumper is removed, it is recommended to clean inner frame of grease and debris with pressure washer and/or degreaser.

Once stock bumper is removed & frame is clean – you are ready to install the ‘GOAT’ bumper.

### **Frame Bracket Install**



**IT IS CRITICAL THAT THE INSTALLATION INSTRUCTIONS ARE FOLLOWED CORRECTLY. LEAVING OUT BRACKETS, HARDWARE OR NOT TIGHTENING HARDWARE COULD CAUSE DAMAGE TO PEOPLE OR TRUCK DURING WINCHING.**

## Step 1:

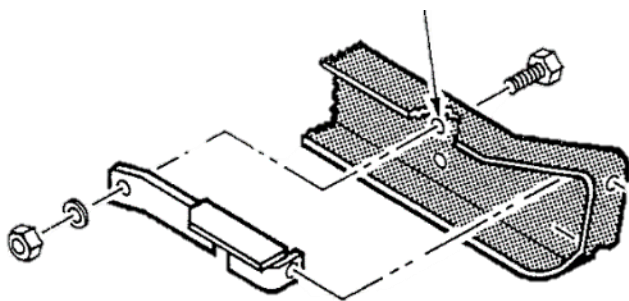
Begin by drilling out the hole highlighted below in both sides of truck frame to ½”

Pictures below show installation on driver side of truck frame

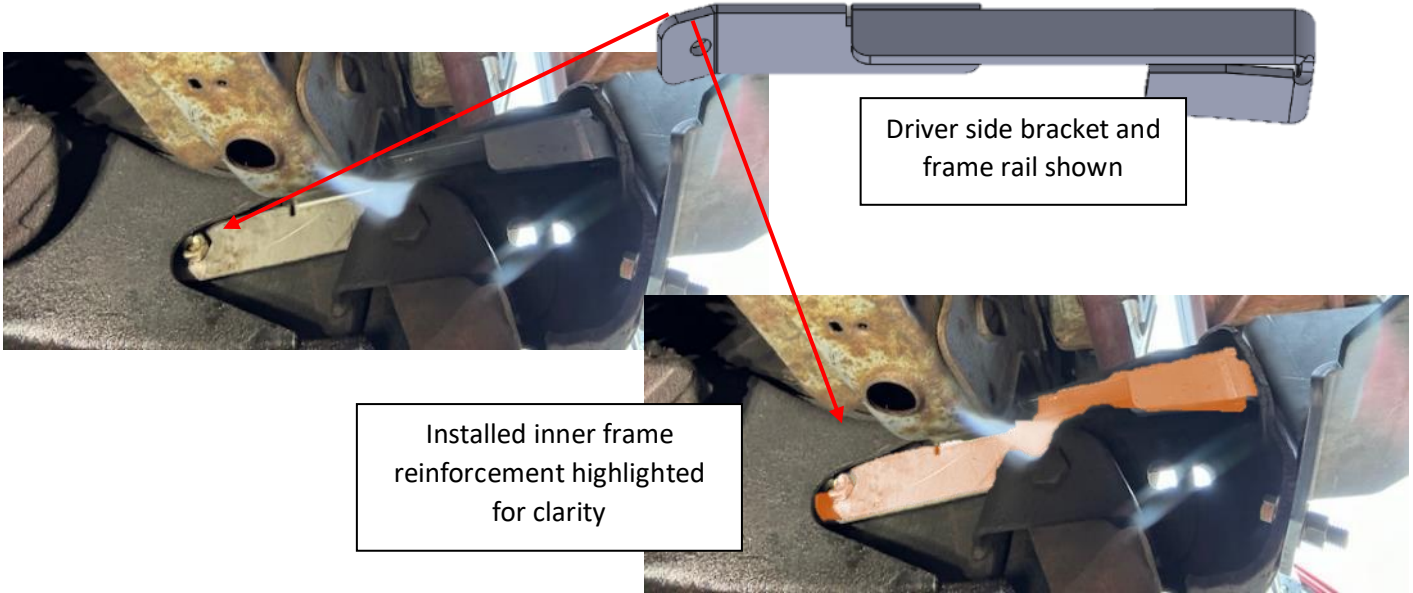
**⚠ WARNING** Drilling operations can cause flying chips. **WEAR SAFETY GOGGLES.** Flying chips can cause eye injury.

**CAUTION** BEFORE DRILLING INTO ANY VEHICLE CHECK THAT THE AREA TO BE DRILLED IS CLEAR OF ANY WATER LINES, FUEL LINES, ELECTRICAL WIRING, OR KEY MECHANICAL EQUIPMENT. ALWAYS USE CAUTION WHEN DRILLING OR CUTTING ON A VEHICLE.

**⚠ WARNING** FAILURE TO INSPECT THE AREA TO BE DRILLED MAY RESULT IN VEHICLE DAMAGE, OR PERSONAL INJURY.

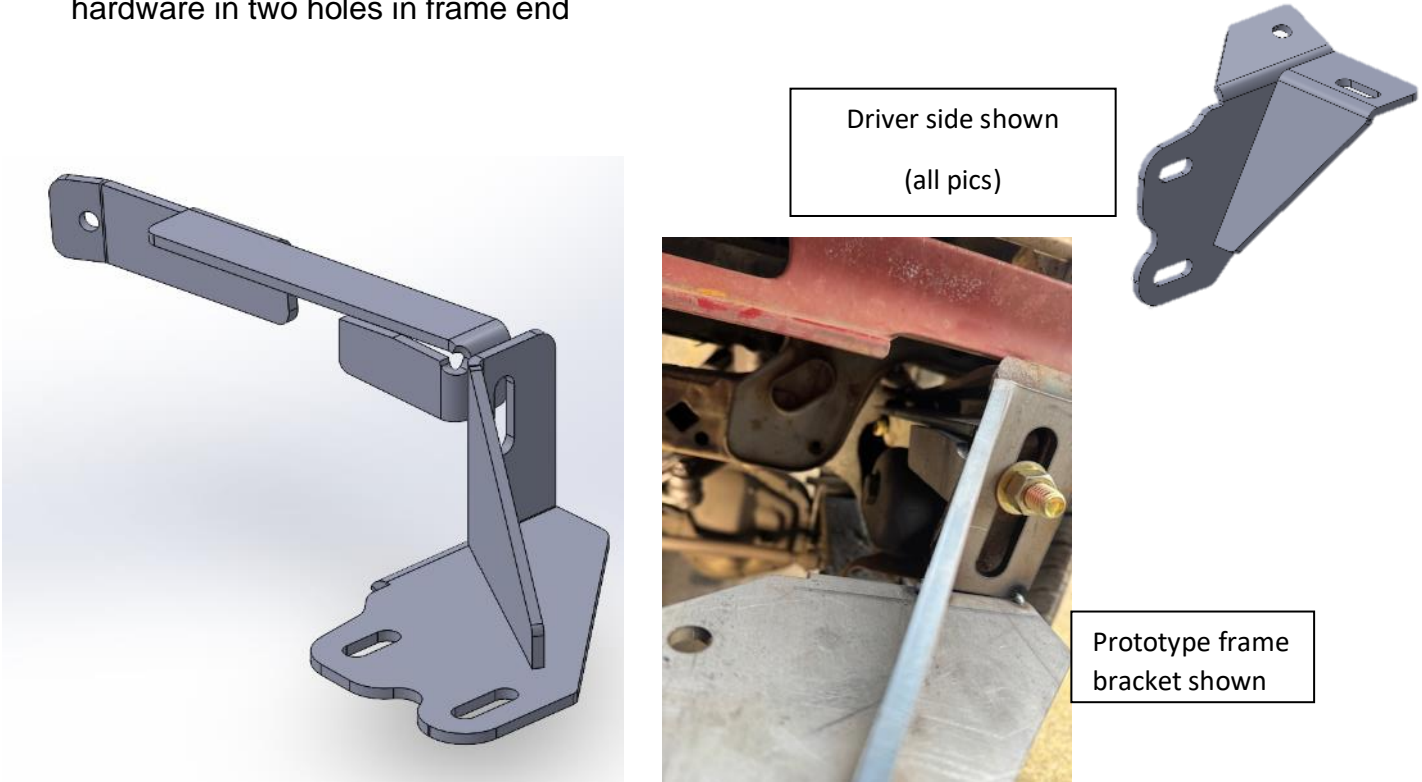


After drilling hole, install the driver side inner frame reinforcement loosely into truck frame using 1/2" grade 8 bolt

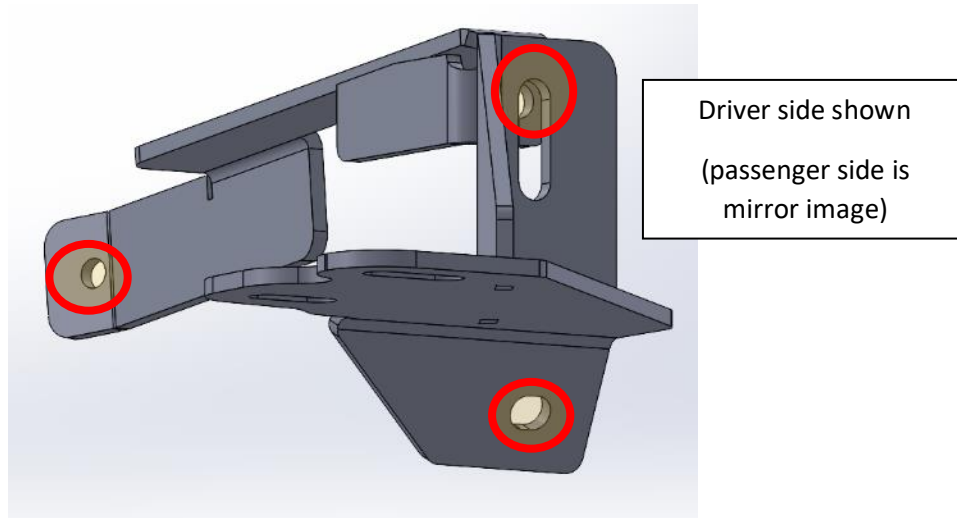


**Step 2:**

Once inner frame reinforcement is installed, install front driver frame bracket using 1/2" hardware in two holes in frame end



There should be (3) ½” grade 8 bolts holding inner frame reinforcement & frame bracket to truck (highlighted below)



**Repeat Steps 1 & 2 for passenger side**

At this time, the frame brackets should be facing in towards each other – install using a washer on each side of bolt and nylon lock nuts

**- leave all bolts loose until bumper is completely installed on truck**



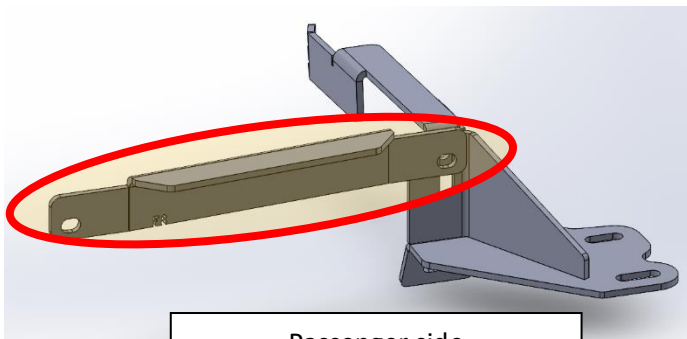


### Step 3:

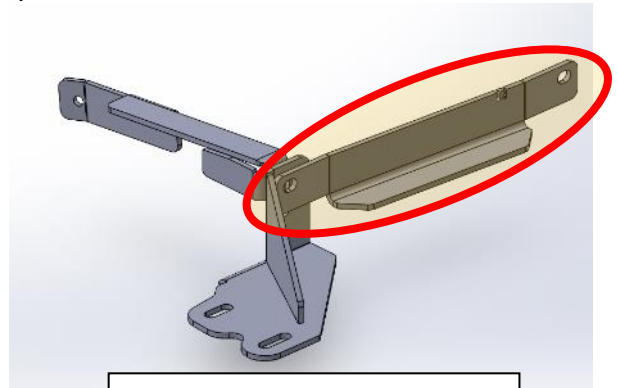
Install the outer bumper braces. Note that there are two provided.

Driver side is intended to be installed as shown (note formed flange is down)

Remove the nut installed in prior step to complete this step



Passenger side  
Note formed flange up



Driver side  
Note formed flange down

### Step 4:

Next, install the Center Winch Base

Place the Center Winch Base plate onto the frame bracket bottom flanges.

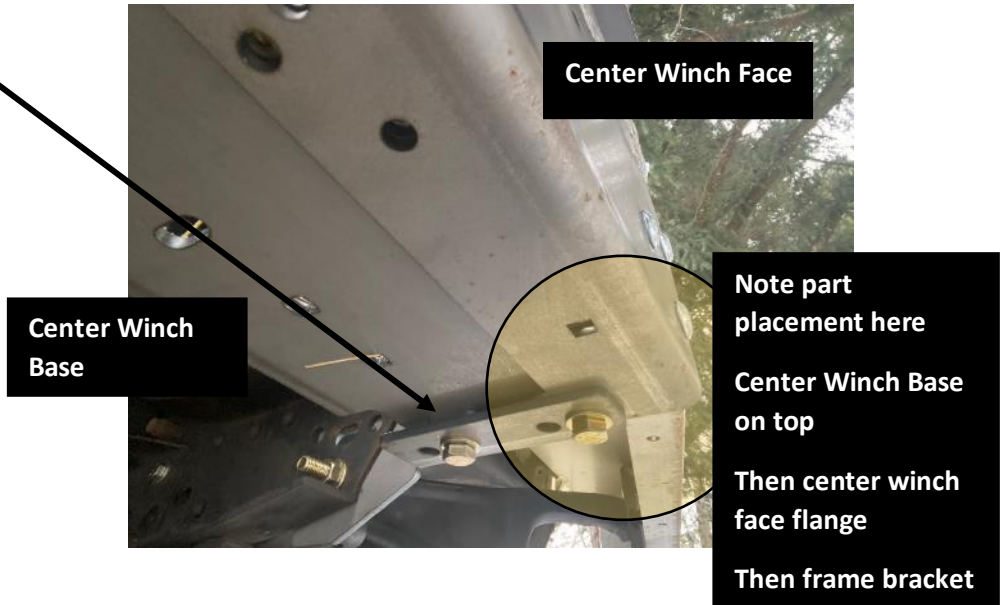
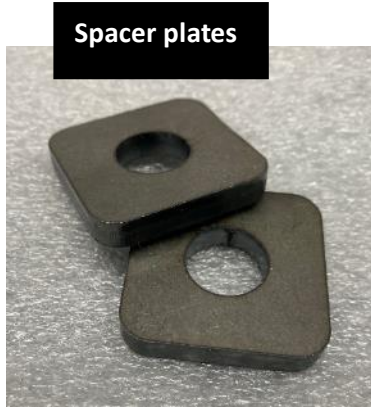
Install a spacer plate (one on each side) between each frame bracket and center winch base – use 1/2" bolts to secure (recommend bolts installed up from bottom for ground clearance)



Bent flange should be up & close to truck

**Step 5:**

Install the front winch plate – should be under bottom winch plate and on top of frame bracket – use ½” bolts to secure – use washers on each side of bolts and lock nuts



Install the highlighted carriage bolts shown at right:



Install the top support plate as shown on both sides (bumper wings will be installed next)

Once center winch assembly is on truck, it is time to install bumper wings



Bumper wings are installed behind Center Winch Face and attach with (3) 7/16" carriage bolts on each side.

Bumper wings are symmetrical and can be installed on driver or passenger side of truck.



Once wings are bolted to center winch assembly, install bumper wing tops

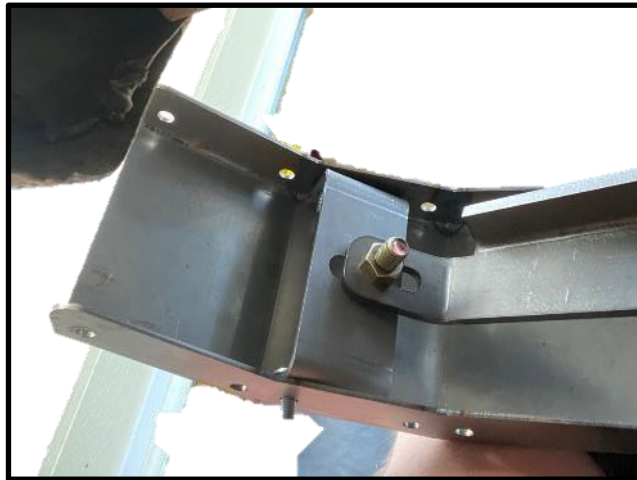
Bumper wing tops should be installed under the flange on the wings with (9) 5/16" bolts on each side – make sure all bolts are installed before tightening.

Check that hole in center (highlighted) is lined up with top plate support and install 5/16" bolt on each side – install washers and lock nuts as necessary.



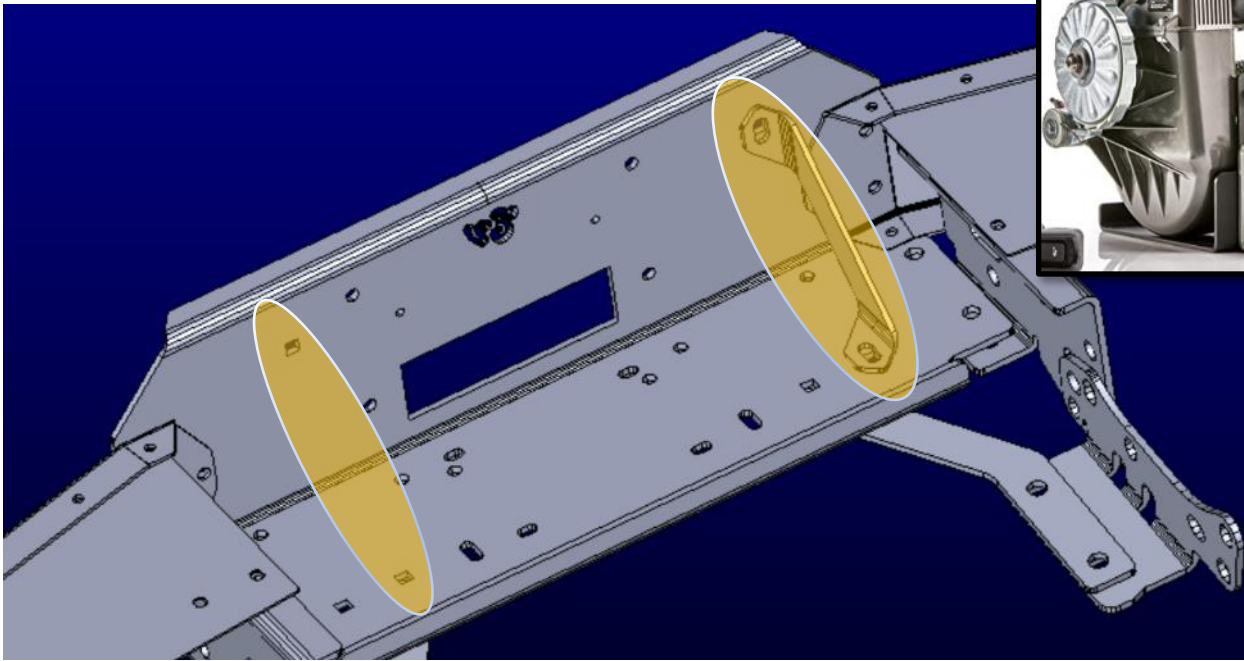
Once bumper tops are installed, line up previously installed outer bumper braces with outer bumper brace bracket. Bumper bracket can also be installed in different holes if that lines up better with your truck

Install outer bumper brace bracket in each bumper wing in appropriate hole that lines up with stock bumper outer brace – this may take some trial & error with bracket to line up. Use a ½” bolt to attach ‘GOAT’ bumper brace to stock outer bumper brace.



‘GOAT’ bumper braces can be moved to different holes to align. Install a 5/16” bolt in appropriate bottom bumper wing hole to attach bottom of bumper brace

If your winch is a WARN 8200, 8074, or 8274, now install the 8274 winch braces on both sides using 7/16 carriage bolts in highlighted locations – tighten these bolts



Once these are installed – it is time to tighten all of the hardware.

Check that bumper is level with truck side to side & front to back. Also check fitment left to right as well as clearance between bumper wings and truck fenders.

Once bumper is leveled – tighten all hardware, starting with the frame bracket bolts, then winch assembly bolts, then bumper ends, then outer bumper stiffener bolts.

Tighten to these specs:

**Torque Specs**

			Wrench Size
1/4" bolts	7	ft-lbs	7/16
5/16" bolts	15	ft-lbs	1/2
3/8" bolts	28	ft-lbs	9/16
7/16" bolts	37	ft-lbs	5/8
1/2" bolts	80	ft-lbs	3/4
5/8" bolts	120	ft-lbs	15/16

Once all bolts are tightened, assembly is complete and winch can be installed per winch manufacturer instructions.



**NOTICE**

**If your state requires your vehicle to have a front license plate, check out our License Plate Flip kit or license plate mouting bracket (both sold separately) on our website.**

Recommended care:  
Regular washing with fresh water and mild car wash detergent followed by rinsing and drying with a soft towel is the best minimum care. Beyond that, any cleaner/wax recommended for automotive finishes will work well to remove minor stains and scuffs and provide protection.

Thank you and check out our other products at: **Engineered Vintage.com**

