



INSTALLATION INSTRUCTIONS

72-93 DODGE 'GOAT' BUMPER

These instructions cover installation for 1972-93 Dodge Truck & 1974-93 Ramcharger

Part Number: 72-93 DODGE GOAT

CARELESS INSTALLATION AND OPERATION OF THIS PRODUCT CAN RESULT IN SERIOUS INJURY OR EQUIPMENT DAMAGE. READ AND UNDERSTAND ALL SAFETY PRECAUTIONS AND OPERATING INSTRUCTIONS BEFORE INSTALLING AND OPERATING THIS PRODUCT.

This guide identifies potential hazards and has important safety messages

WARNING, CAUTION, NOTICE, & Note are signal words that identify the level of hazard. These are outlined below:

WARNING signals a hazard that could cause serious injury or death if you do not follow recommendations.

CAUTION signals a hazard that may cause minor to moderate injury if you do not follow recommendations.

NOTICE signals to call attention to important information

Note: to emphasize general information worthy of special attention

CAUTION

PLEASE WORK SAFELY

CAUTION

BEFORE DRILLING INTO ANY VEHICLE CHECK THAT THE AREA TO BE DRILLED IS CLEAR OF ANY WATER LINES, FUEL LINES, ELECTRICAL WIRING, OR KEY MECHANICAL EQUIPMENT. ALWAYS USE CAUTION WHEN DRILLING OR CUTTING ON A VEHICLE.

WARNING

FAILURE TO INSPECT THE AREA TO BE DRILLED MAY RESULT IN VEHICLE DAMAGE, OR PERSONAL INJURY.

WARNING

WEAR APPROPRIATE PPE WHEN INSTALLING THIS KIT: GLOVES, HEARING PROTECTION, SAFETY GLASSES/GOGGLES.

Note:

Thank you for your purchase of the **Engineered Vintage 'GOAT' bumper**

Please read these instructions completely before installation of this kit.

These instructions are intended to convey information on how to best mount this kit onto your truck.

This kit is designed to bolt into 1972-93 Dodge pickups & 1974-93 Dodge Ramchargers.

This kit was designed to mount a variety of winch models onto these trucks.



***'GOAT' bumper shown on
1993 Dodge 4x4 W350
Dually in raw steel***



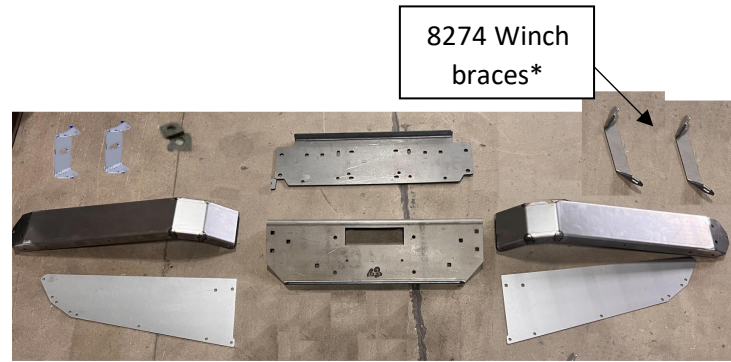
***'GOAT' bumper shown on
1993 Dodge 4x4 W350 Dually
in polished stainless steel***



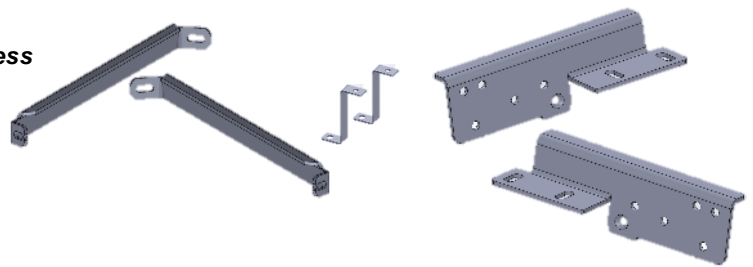
***'GOAT' bumper shown on
1993 Dodge 4x4 W350 Dually
in raw steel with Optional
Shackle Bracket Tow Hooks***

'GOAT' Bumper PARTS LIST

| QTY | DESCRIPTION |
|-----|--|
| -1- | FRAME BRACKET, DRIVER (LH) |
| -1- | FRAME BRACKET, PASSENGER (RH) |
| -1- | CENTER WINCH BASE |
| -1- | CENTER WINCH FACE |
| -2- | BUMPER WINGS |
| -2- | BUMPER WING TOP PLATES |
| -2- | SPACER PLATES, 1/4" THICK |
| -1- | OUTER BUMPER BRACE, RH |
| -1- | OUTER BUMPER BRACE, LH |
| -2- | OUTER BUMPER BRACE BRACKET |
| -2- | TOP PLATE SUPPORT |
| -2- | 8274 WINCH BRACE* (<i>*not included unless selected at purchase – only used with WARN 8200 & 8274 winches</i>) |



8274 Winch braces*



HARDWARE LIST:

| ID | Qty | Description | Where Used |
|----|-----|--|--|
| A | 6 | 7/16-14 x 2" GR8 BOLT | Use (6) to mount frame brackets to truck frame (rear holes in frame bracket) |
| B | 20 | 7/16" washers | Use (2) per 7/16" bolt (washers are not used on 8274 bracket bolts) |
| C | 18 | 7/16" nyloc nuts (or lock washers & nuts) | Use (1) per 7/16" bolt |
| D | 8 | 1/2-13 UNC GR 8 BOLTS, 2" LONG | (4) used to mount frame brackets to truck frame (front holes in truck frame) (4) used to mount center winch base to frame brackets |
| E | 4 | 1/2-13 UNC GR 8 BOLTS, 1.5" LONG | (2) used to mount outer bumper braces to outer bumper brace brackets (2) extra bolts |
| F | 20 | 1/2" washers | Use (2) per 1/2" bolt |
| G | 10 | 1/2" nyloc nuts (or lock washers & nuts) | Use (1) per 1/2" bolt |
| H | 12 | 7/16 x 1" CARRIAGE BOLTS | (6) used to mount bumper wings to bumper face plate (4) used to mount 8274 bracket between bottom winch plate & bumper face plate (2) used to mount center winch face to center winch base |

| | | | |
|---|----|---|--|
| I | 20 | 5/16 BOLTS | (18) used to mount bumper wing tops to bumper wings & wing support (2) used to mount bumper stiffener bracket inside bumper wings |
| J | 20 | 5/16" washers | Use (1) per 5/16" bolt |
| K | 20 | 5/16" nyloc nuts (or lock washers & nuts) | Use (1) per 5/16" bolt |

If Optional Shackle Bracket Tow Hooks are purchased, your hardware kit will also include:

| ID | Qty | Description | Where Used |
|----|-----|--|-----------------------------------|
| L | 2 | 1/2-13 x 2" Countersunk Bolts | Use (1) per Shackle Bracket Hook |
| M | 2 | 1/2" nyloc nuts (or lock washers & nuts) | Use (1) per Countersunk Bolt |
| N | 4 | 1/2" washers | Use (2) per 1/2" Countersunk bolt |

Installation prep



As these trucks are 30-50 years old, before installation of this kit the front frame rail ends should be inspected to ensure rigidity and ability to securely hold this winch mount. If there are rust holes or there is other physical damage to frame then frame should be professionally repaired before installation of this product.

If holes outlined in installation instructions are not present in your truck frame, it may be necessary to drill holes in truck frame.



Drilling operations can cause flying chips. WEAR SAFETY GOGGLES. Flying chips can cause eye injury.

Recommend spraying all bumper hardware, with penetrating oil or “bolt loosening spray” the night before installation to ease bumper removal from truck. Bumper hardware can be difficult to remove with rust, road grime, etc accumulated over time on truck.

Remove the front bumper from truck.

Once bumper is removed, it is recommended to clean inner frame of grease and debris with pressure washer and/or degreaser.

Once stock bumper is removed & frame is clean – you are ready to install the ‘GOAT’ bumper.

Frame Bracket Install



IT IS CRITICAL THAT THERE ARE FIVE GRADE 8 BOLTS HOLDING EACH FRAME BRACKET TO THE FRAME (5 EACH SIDE, 10 TOTAL)

The frame brackets provided have bolt patterns to accommodate the broadest range of these trucks.

It is imperative that there are at least 5 bolts holding each frame bracket to the frame rail.

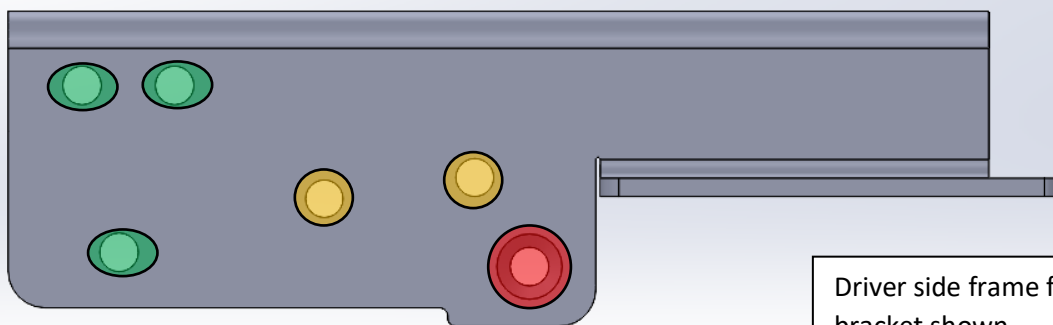
Install the frame brackets on the outside of the truck frame rails using the correct hole pattern as outlined below – the frame brackets should be facing in towards each other – use the appropriate bolts to attach frame brackets to truck as detailed – install using a washer on each side of bolt and lock nuts

- leave all bolts loose until bumper is completely installed on truck

Green holes – 7/16" x 2" long Grade 8 bolts

Yellow holes: 1/2" x 2" long Grade 8 bolts

Red hole: Hole for counter sunk bolt for optional Shackle Bracket Tow Hooks (option sold separately)



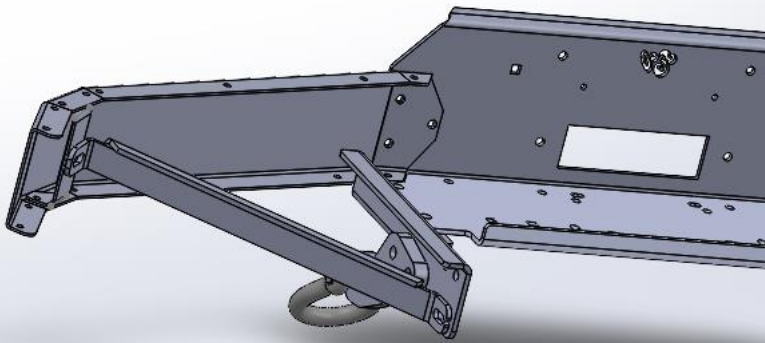
Driver side frame frame bracket shown

If Shackle Bracket Tow hooks were purchased, install the countersunk bolt now and tighten this bolt, ensuring yellow bolt holes in frame bracket are lined up with top holes in Shackle Bracket



Optional Shackle Bracket Tow Hook Kit shown (sold separately)

Install the outer bumper brace. Note that the notched end should go towards truck, with the bent flange at top – use the bottom ½” bolt to install bumper brace to truck frame – again, leave this bolt loose until bumper is installed – it will be tightened at the end.



Repeat installation of frame bracket for opposite side of truck



Prototype bracket shown

Next, install the Center Winch Base

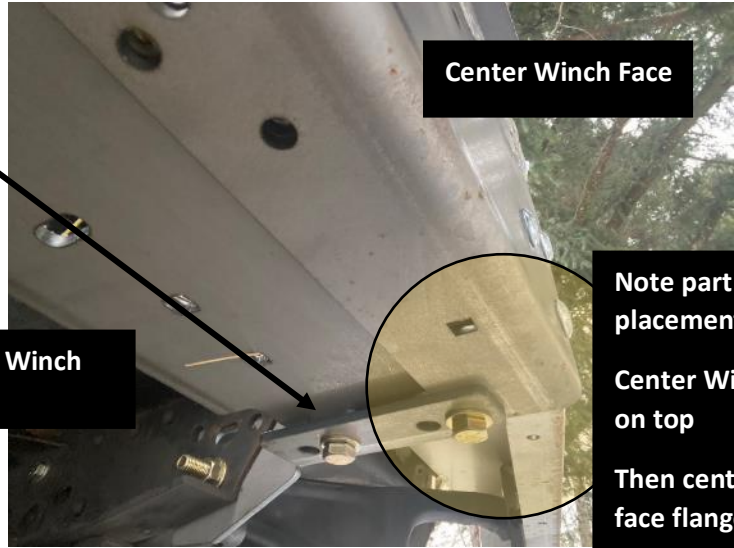
Place the Center Winch Base plate onto the frame bracket bottom flanges.

Install a spacer plate (one on each side) between each frame bracket and center winch base – use ½” bolts to secure (recommend bolts installed up from bottom for ground clearance)





Install the front winch plate – should be under bottom winch plate and on top of frame bracket – use ½” bolts to secure – use washers on each side of bolts and lock nuts (or lock washers & nuts)



Center Winch Face

Center Winch Base

Note part placement here
Center Winch Base on top
Then center winch face flange
Then frame bracket

Install the highlighted carriage bolts shown at right:



Install the top support plate as shown on both sides (bumper wings will be installed next)

Once center winch assembly is on truck, it is time to install bumper wings



Bumper wings are installed behind Center Winch Face and attach with (3) 7/16" carriage bolts on each side.

Bumper wings are symmetrical and can be installed on driver or passenger side of truck.



Once wings are bolted to center winch assembly, install bumper wing tops

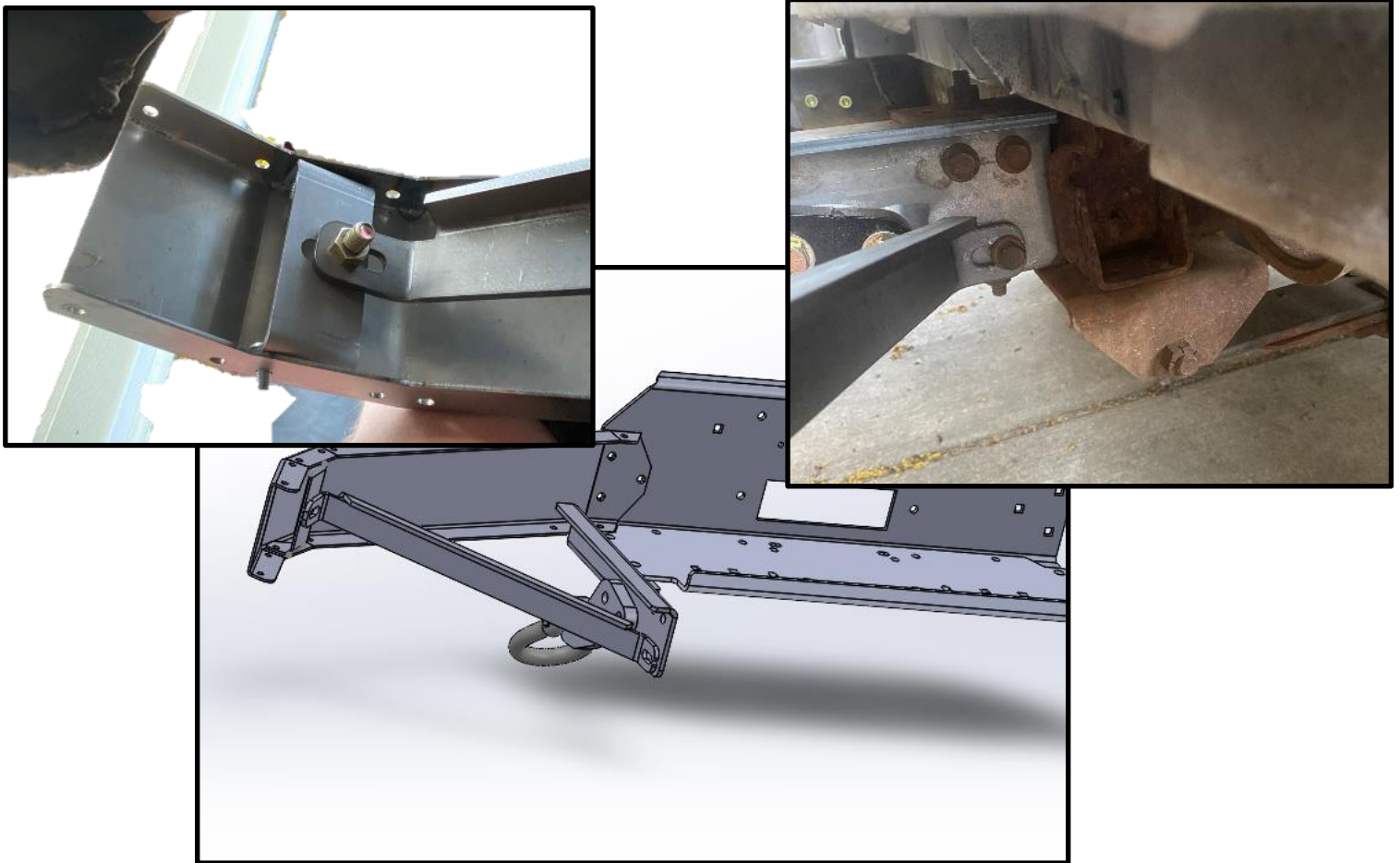
Bumper wing tops should be installed under the flange on the wings with (9) 5/16" bolts on each side – make sure all bolts are installed before tightening.

Check that hole in center (highlighted) is lined up with top plate support and install 5/16" bolt on each side – install washers and lock nuts as necessary.



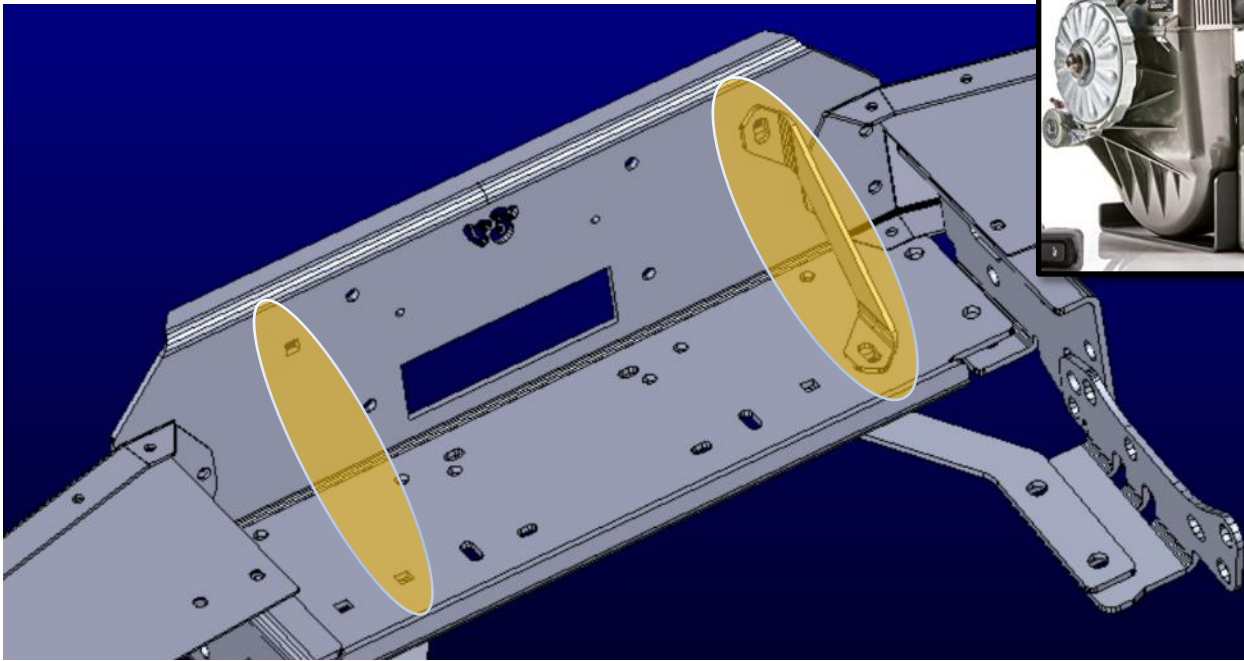
Once bumper tops are installed, line up previously installed outer bumper braces with outer bumper brace bracket. Bumper bracket can also be installed in different holes if that lines up better with your truck

Install outer bumper brace bracket in each bumper wing in appropriate hole that lines up with stock bumper outer brace – this may take some trial & error with bracket to line up. Use a ½” bolt to attach ‘GOAT’ bumper brace to stock outer bumper brace.



‘GOAT’ bumper braces can be moved to different holes to align. Install a 5/16” bolt in appropriate bottom bumper wing hole to attach bottom of bumper brace

If your winch is a WARN 8200 or 8274, now install the 8274 winch braces on both sides using 7/16 carriage bolts in highlighted locations – tighten these bolts



Once these are installed – it is time to tighten all of the hardware.

Check that bumper is level with truck side to side & front to back.

Once bumper is leveled – tighten all hardware, starting with the frame bracket bolts, then winch assembly bolts, then bumper ends, then outer bumper stiffener bolts.

Tighten to these specs:

Torque Specs

| | | | Wrench Size |
|-------------|-----|--------|----------------|
| 1/4" bolts | 7 | ft-lbs | 7/16 |
| 5/16" bolts | 15 | ft-lbs | 1/2 |
| 3/8" bolts | 28 | ft-lbs | 9/16 |
| 7/16" bolts | 37 | ft-lbs | 5/8 |
| 1/2" bolts | 80 | ft-lbs | 3/4 |
| 5/8" bolts | 120 | ft-lbs | 15/16 |

Once all bolts are tightened, assembly is complete and winch can be installed per winch manufacturer instructions.



**'GOAT' bumper installed on 1993 W350
Polished Stainless Bumper shown
with WARN 8274 winch**

NOTICE

If your state requires your vehicle to have a front license plate, check out our License Plate Flip kit or license plate mouting bracket (both sold separately) on our website.

Recommended care:

Regular washing with fresh water and mild car wash detergent followed by rinsing and drying with a soft towel is the best minimum care. Beyond that, any cleaner/wax recommended for automotive finishes will work well to remove minor stains and scuffs and provide protection.

Thank you and check out our other products at:

Engineered Vintage.com

