



INSTALLATION INSTRUCTIONS

GRILLE AF (ALUMINUM FABRICATED)

1977-80 GMC Truck Grille

CARELESS INSTALLATION AND OPERATION OF THIS PRODUCT CAN RESULT IN SERIOUS INJURY OR EQUIPMENT DAMAGE. READ AND UNDERSTAND ALL SAFETY PRECAUTIONS AND OPERATING INSTRUCTIONS BEFORE INSTALLING AND OPERATING THIS PRODUCT.

This guide identifies potential hazards and has important safety messages.

WARNING, CAUTION, NOTICE, & Note are signal words that identify the level of hazard. These are outlined below:

WARNING signals a hazard that could cause serious injury or death if you do not follow recommendations.

CAUTION signals a hazard that may cause minor to moderate injury if you do not follow recommendations.

NOTICE signals to call attention to important information!

Note: to emphasize general information worthy of special attention

CAUTION

PLEASE WORK SAFELY

CAUTION

BEFORE DRILLING INTO ANY VEHICLE CHECK THAT THE AREA TO BE DRILLED IS CLEAR OF ANY WATER LINES, FUEL LINES, ELECTRICAL WIRING, OR KEY MECHANICAL EQUIPMENT. ALWAYS USE CAUTION WHEN DRILLING OR CUTTING ON A VEHICLE.

WARNING

FAILURE TO INSPECT THE AREA TO BE DRILLED MAY RESULT IN VEHICLE DAMAGE, OR PERSONAL INJURY.

WARNING

WEAR THE APPROPRIATE PPE WHEN INSTALLING THIS KIT: GLOVES, HEARING PROTECTION, SAFETY GLASSES/GOGGLES.

Note:

Please read these instructions completely before installation of this kit.

WARNING

As these trucks are 40+ years old, before installation of this kit the core support should be inspected to ensure rigidity and ability to securely hold this product. If there are rust holes or other physical damage to the core support, it should be professionally repaired before installation of this product.

Thank you for your purchase of the Engineered Vintage Grille AF! (Aluminum Fabricated!)

This kit is designed to install onto your 1977-80 GMC Truck, Suburban, Panel or Blazer/Jimmy and is the ultimate front-end accessory to your truck. No more cheap aftermarket or 40+ year old brittle OEM grilles on your classic GM truck.

The Grille AFs are available in various finish options – check the website product section for current offerings. Installation of each is the same – regardless of finish. No additional coating is applied onto the aluminum so that grilles can be touched up by polishing if necessary.

Some customers have anodized, ceramic coated, or even powder coated the Grille AF and there are positives and negatives with each of these coatings. Contact your local shop that does these processes to understand what is best for you.

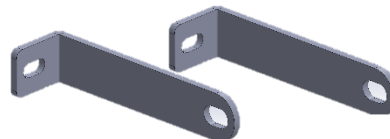
Special note on handling of polished Grille AFs: We recommend handling these with cotton gloves or cotton t-shirt during installation. Any smudges or light scratches

can be cleaned with common kitchen flour or your favorite aluminum polish.




Parts List

QTY	DESCRIPTION
-1-	GRILLE, ALUMINUM FABRICATED
-1-	Grille Mounting hardware
-2-	Mounting brackets



HARDWARE LIST:

Identifier	Qty	Description	Where Used
A	1	Stock GM Grille mounting hardware 	Used at Grille Mount locations indicated
B	2	1/2-13 x 1.5" bolts	(1) Used at each end of Grille to mount mounting brackets to grille
C	4	1/2" washers	Use (2) per 1/2" bolt
D	2	1/2-13 nyloc nuts	Use with 1/2" bolts
E	2	3/8-16 x 1.5" bolts	Used to secure mounting brackets to core support of truck
F	2	3/8 fender washers	Use (2) per 3/8" bolt
G	2	3/8-16 nyloc nuts	Use with 3/8" bolts

1977-80 GRILLE AF install

Begin by removing the stock grille from your truck. There are numerous videos on YouTube outlining methodology on how to do this. There are six Phillips head screws holding grille to truck.

Once stock grille has been removed from truck, check core support area for damage. If core support is damaged – repair core support before installing Grille AF.

Remove all of the old plastic mounting tabs in core support



Install new plastic GM mounting tabs in the six locations highlighted below



Remove headlight bezels on both sides of truck (5 Phillips head or Torx screws per side)



If you are installing an engine badge, or front emblem install it now

If GMC emblem is planned to be installed, install onto grille now (new CNC billet letters are available on our website) – check that emblem is centered on grille side to side and use stock hardware to fasten to grille



To install grille into truck:

Stand in front of truck holding grille

Gently place the Grille AF into truck grille opening, tucking the lower tabs into grille opening, while keeping the top of the Grille AF outside of truck

Lower Grille AF into opening until bottom of Grille AF is touching the window opening, then slide Grille AF straight into window opening, tucking top tabs of Grille AF inside truck grille opening

It may be necessary to slightly lift up the window (see bottom picture)



It may be necessary to slightly pull up on truck grille opening in locations shown to fit Grille AF top tabs into grille opening

Check alignment of Grille AF in opening of truck – adjust as necessary so it is centered side to side as well as up & down.

Adjust Grille AF to correct location / side to side, up & down, and in/out – it may be necessary to adjust stock outside brackets to different angles to get proper Grille AF fit.

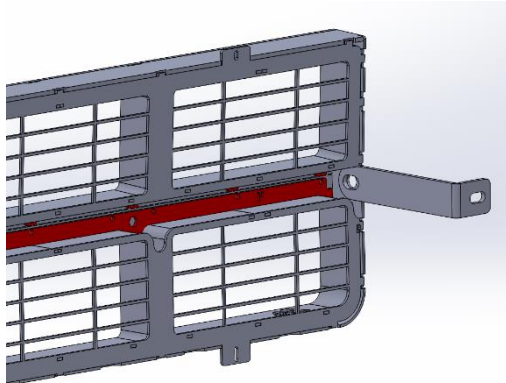
Add washers behind Grille AF mounting tabs as necessary to shim top (or bottom) of Grille AF in/out

Install stock grille mounting screws in (6) locations

Next, install the Grille AF Mounting brackets.

The Grille AF mounting brackets bolt to the outside edges of the Grille AF and then bolt to core support of the truck. You will need to drill a 3/8" hole in your core support to attach the Grille AF mounting brackets to truck.

First, attach the mounting brackets to Grille AF. These can be installed with bracket inside Grille AF or with them on the outside (see pics below) Use the 1/2" hardware to attach the bracket to the Grille AF.



Once bracket is attached to Grille AF, mark location on the core support to drill hole.

CAUTION

PLEASE WORK SAFELY

CAUTION

BEFORE DRILLING INTO ANY VEHICLE CHECK THAT THE AREA TO BE DRILLED IS CLEAR OF ANY WATER LINES, FUEL LINES, ELECTRICAL WIRING, OR KEY MECHANICAL EQUIPMENT. ALWAYS USE CAUTION WHEN DRILLING OR CUTTING ON A VEHICLE.

WARNING

FAILURE TO INSPECT THE AREA TO BE DRILLED MAY RESULT IN VEHICLE DAMAGE, OR PERSONAL INJURY.

WARNING

WEAR THE APPROPRIATE PPE WHEN INSTALLING THIS KIT: GLOVES, HEARING PROTECTION, SAFETY GLASSES/GOGGLES.



WARNING

CHECK TO ENSURE YOU ARE NOT DRILLING INTO RADIATOR, BATTERY TRAY, BATTERY, AND/OR RADIATOR OVERFLOW TANK.

Drill 3/8 hole in core support

Install bolt into core support and Grille AF mounting bracket and tighten

Repeat for opposite side



Check that all hardware is secure

Set headlight bezels in place as necessary to check alignment & reinstall the headlight bezels.



Installation is complete

Recommended care:

Regular washing with fresh water and mild car wash detergents followed by rinsing and drying with a soft towel is the best minimum care.

Use a polishing product intended for aluminum as necessary over time.



Thank you for supporting our business and check out our other products at:

Engineered Vintage.com

