



INSTALLATION INSTRUCTIONS

GRILLE AF (ALUMINUM FABRICATED)

1973-1974 Chevy Truck Grille

CARELESS INSTALLATION AND OPERATION OF THIS PRODUCT CAN RESULT IN SERIOUS INJURY OR EQUIPMENT DAMAGE. READ AND UNDERSTAND ALL SAFETY PRECAUTIONS AND OPERATING INSTRUCTIONS BEFORE INSTALLING AND OPERATING THIS PRODUCT.

This guide identifies potential hazards and has important safety messages

WARNING, CAUTION, NOTICE, & Note are signal words that identify the level of hazard. These are outlined below:

⚠ WARNING signals a hazard that could cause serious injury or death if you do not follow recommendations.

CAUTION signals a hazard that may cause minor to moderate injury if you do not follow recommendations.

NOTICE signals to call attention to important information

Note: to emphasize general information worthy of special attention

CAUTION

PLEASE WORK SAFELY

CAUTION

BEFORE DRILLING INTO ANY VEHICLE CHECK THAT THE AREA TO BE DRILLED IS CLEAR OF ANY WATER LINES, FUEL LINES, ELECTRICAL WIRING, OR KEY MECHANICAL EQUIPMENT. ALWAYS USE CAUTION WHEN DRILLING OR CUTTING ON A VEHICLE.

⚠ WARNING

FAILURE TO INSPECT THE AREA TO BE DRILLED MAY RESULT IN VEHICLE DAMAGE, OR PERSONAL INJURY.

⚠ WARNING

WEAR APPROPRIATE PPE WHEN INSTALLING THIS KIT: GLOVES, HEARING PROTECTION, SAFETY GLASSES/GOGGLES.

Note:

Please read these instructions completely before installation of this kit.

⚠ WARNING

As these trucks are 50+ years old, before installation of this kit the core support should be inspected to ensure rigidity and ability to securely hold this product. If there are rust holes or there is other physical damage to core support it should be professionally repaired before installation of this product.

Thank you for your purchase of the Engineered Vintage Grille AF! (Aluminum Fabricated!)

This kit is designed to install onto your 1973-74 Chevrolet or GMC Truck, Suburban, Panel or Blazer and is the ultimate front-end accessory to your truck. No more cheap aftermarket or 50+ year old brittle OEM grilles on your classic GM truck.

These grilles are available in various finish options – check website product section for current offerings. Installation of each is the same – regardless of finish. No additional coating is applied onto the aluminum so that grilles can be touched up by polishing if necessary.

Some customers have anodized, ceramic coated, or even powder coated these grilles and there are positives and negatives with each of these coatings. Contact your local shop that does these processes to understand what is best for you.

Special note on handling of polished grilles: We recommend handling these with cotton gloves or cotton t-shirt during install. Any smudges or light scratches can be cleaned with common kitchen flour or your favorite aluminum polish.






1973-74 Grille AF
Shown with Polished Front Edge
& Gray Powder Coat, Custom Billet
Engine Badge & reproduction 73-74 bowtie



Parts List

QTY	DESCRIPTION
-1-	GRILLE, ALUMINUM FABRICATED
-1-	Grille Mounting hardware

HARDWARE LIST:

Identifier	Qty	Description	Where Used
A	1	Stock Grille mounting hardware 	Used at Grille Mount locations indicated
B	4	¼-20 x 1.5" BOLTS	(2) Used at each end of Grill in place of small stock screws (2) provided for install of nut-serts
C	3	¼-20 x 1" pan head screw 	Use at top center & bottom center to mount grille to center hood latch support
D	5	1/4-20 nyloc nuts	Use with 1/4-20 bolts & pan head screw
E	9	¼" WASHERS	(2) per ¼-20 x 1.5" bolt (1) per pan head screw (2) provided for install of nut-serts
G	3	¼" Nut-serts 	(2) Used to mount center of Grille (1) extra provided

1973-74 GRILLE AF install

Begin by removing the stock grille from your truck. There are numerous videos on YouTube outlining methodology on how to do this. There are eight Philips head screws holding grille to truck.

Once stock grille has been removed from truck, check core support area for damage. If core support is damaged – repair core support before installing Grille AF.

Remove all of the old plastic mounting tabs in core support



Install new plastic mounting tabs in the four locations below (only these four)



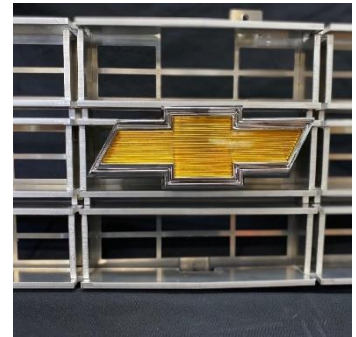
Remove headlight bezels on both sides of truck (5 Phillips head or Torx screws per size)



If you are installing an engine badge, install it now



If an aftermarket 1975-79 style bowtie or GMC emblem is planned to be installed, install onto grille now (new bow ties are available on our website) – check that bowtie is centered on grille side to side and use stock bowtie hardware to fasten to grille



If a stock 73-74 "sticker" emblem is to be installed (available on our website) – use our optional emblem mounting kit (sold separately & shown at right). Bolt the pieces to the Grille AF in appropriate orientation and stick emblem onto Grille AF.

The four holes in the "EV" logo on the Grille AF are to bolt the emblem mounting kit onto the Grille AF.

Use the countersunk head screws with washers & nylocs on back-side so that the emblem mounting area is flat to accept the "sticker" emblem. Install the emblem onto emblem mounting kit.



Next we will install Grille into truck



Set grille gently into truck

Take a long screwdriver and carefully insert it into top center driver side hole in grille and insert it into top driver side hole in hood latch support (highlighted)



Leave screwdriver in place (don't stab the radiator!) and line up the side tabs at end of grille with stock grille mounting brackets – install the 1/4" bolts in these locations with washers at front & back on each side.



CAUTION

**DON'T STAB THE RADIATOR
WITH SCREWDRIVER**



Check alignment of Grille AF in opening of truck – adjust as necessary so it is centered side to side as well as up & down.

Adjust grille to correct location / side to side, up & down, and in/out – it may be necessary to adjust stock outside brackets to different angles to get proper grille fit.

Note where the center grille holes are on the core support

It is possible that brackets and/or core support mounts may need to be drilled – but this is unusual (contact us if you run into this)

Set headlight bezels in place as necessary to check alignment



Once Grille AF is in desired location –

We will now install the riv-nuts in the center core support bracket

You will need a 3/8" drill bit for this step

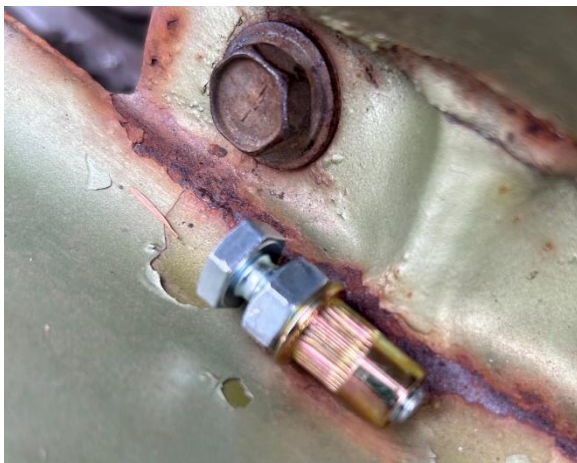
Make sure (from prior step) you are clear on where center Grille holes are in relation to the center mounting bracket.

Once you are clear where the holes are in relation to the Grille, drill out a 3/8" hole in the center mounting bracket.

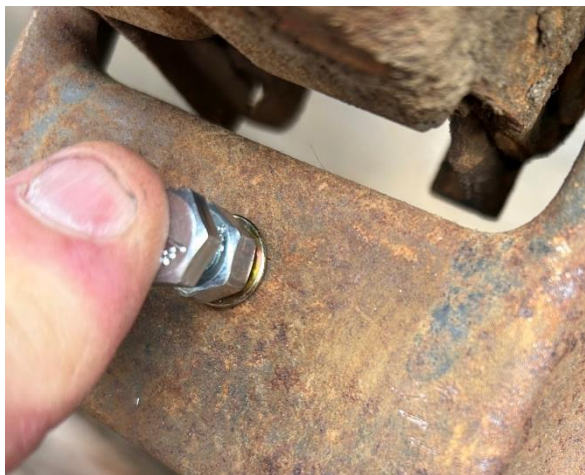


Next, take one of the 1/4" bolts, a 1/4" nut, and a nutsert and thread them together per below.

Note that the bolt should be slightly sticking out of the nut-sert as per pic below



Install the assembly in the drilled hole



Using two wrenches, hold the bolt steady and tighten the nut until the nut-sert expands against backside of the hole.



Note the nut sert has expanded in these pictures and is securely mounted in core support center bracket

Repeat this process with the nutsert for the bottom center hole as well.



Reinstall the grille and tighten side bolts and then install four stock grille mounting screws in the locations shown below



Install pan head screws in center top & bottom locations with washer & nutsert

Once grille location is set – check that hardware is tightened at all locations.

Reinstall headlight bezels onto truck.

Installation is complete

Recommended care:

Regular washing with fresh water and mild car wash detergents followed by rinsing and drying with a soft towel is the best minimum care.

Use a polishing product intended for aluminum as necessary over time.



Thank you for supporting our business and check out our other products at:

EngineeredVintage.com

