



INSTALLATION INSTRUCTIONS

GRILLE AF (ALUMINUM FABRICATED) Polished or Brushed Finish

1971-72 Chevy Truck Grille

CARELESS INSTALLATION AND OPERATION OF THIS PRODUCT CAN RESULT IN SERIOUS INJURY OR EQUIPMENT DAMAGE. READ AND UNDERSTAND ALL SAFETY PRECAUTIONS AND OPERATING INSTRUCTIONS BEFORE INSTALLING AND OPERATING THIS PRODUCT.

This guide identifies potential hazards and has important safety messages

WARNING, CAUTION, NOTICE, & Note are signal words that identify the level of hazard. These are outlined below:

WARNING signals a hazard that could cause serious injury or death if you do not follow recommendations.

CAUTION signals a hazard that may cause minor to moderate injury if you do not follow recommendations.

NOTICE signals to call attention to important information

Note: to emphasize general information worthy of special attention

CAUTION

PLEASE WORK SAFELY

CAUTION

BEFORE DRILLING INTO ANY VEHICLE CHECK THAT THE AREA TO BE DRILLED IS CLEAR OF ANY WATER LINES, FUEL LINES, ELECTRICAL WIRING, OR KEY MECHANICAL EQUIPMENT. ALWAYS USE CAUTION WHEN DRILLING OR CUTTING ON A VEHICLE.

WARNING

FAILURE TO INSPECT THE AREA TO BE DRILLED MAY RESULT IN VEHICLE DAMAGE, OR PERSONAL INJURY.

WARNING

WEAR APPROPRIATE PPE WHEN INSTALLING THIS KIT: GLOVES, HEARING PROTECTION, SAFETY GLASSES/GOGGLES.

Note:

Please read these instructions completely before installation of this kit.

WARNING

As these trucks are 50+ years old, before installation of this kit the core support should be inspected to ensure rigidity and ability to securely hold this product. If there are rust holes or there is other physical damage to core support it should be professionally repaired before installation of this product.

Thank you for your purchase of the Engineered Vintage Grille AF!

This kit is designed to install onto your 1971-72 Chevrolet Truck, Suburban, Panel or Blazer and is the ultimate front-end accessory to your truck. No more cheap aftermarket or 50+ year old brittle OEM grilles on your classic GM truck.

These grilles are available in polished or brushed finish. No additional coating is applied onto the aluminum so that grilles can be touched up by polishing if necessary.

Some customers have anodized, ceramic coated, or even powder coated these grilles and there are positives and negatives with each of these coatings. Contact your local shop that does these processes to understand what is best for you.



Special note on handling of polished grilles: We recommend handling these with cotton gloves or cotton t-shirt during install. Any smudges or light scratches can be cleaned with common kitchen flour or your favorite aluminum.



Parts List

QTY	DESCRIPTION
-1-	GRILLE, ALUMINUM FABRICATED
-4-	GRILL MOUNT BRACKETS

HARDWARE LIST:

Identifier	Qty	Description	Where Used
A	4	3/8-16 UNC GR 5 BOLTS, 1.5" LONG	Used to bolt grille mount brackets to core support
B	4	3/8-16 UNC NYLOC NUTS	Used to secure bolts to core support
C	4	3/8 FENDER WASHERS	Used on backside of core support on 3/8 hardware
D	10	1/4-20 UNC GR 5 BOLTS, 1" LONG	Used to secure Grille to Grille Mount brackets (8 in this location) & Grille to stock center grille support (2 in this location)
E	20	1/4 WASHERS	Used on 1/4" bolts (2 per bolt)
F	10	1/4-20 UNC NYLOC NUTS	Used to secure Grille to Grille Mount brackets & Grille to stock center grille support

1971-72 GRILLE AF install

CAUTION

Note that it may be necessary to remove radiator from truck to install this product

Begin by removing the stock grille from your truck. There are numerous videos on YouTube outlining methodology on how to do this.

Search for **“1969-72 Chevy Truck - Remove & Replace the Grille - Inner/Outer Assembly”**



Once grille assembly has been removed from truck, carefully separate the outer grille from the inner grille.

Install the grille mount brackets to the inside of the grille brackets as shown in picture and loosely install hardware between grille and grille brackets.

CAUTION

Recommend having a friend to help for this next step to prevent damage to truck or grille.

CAUTION

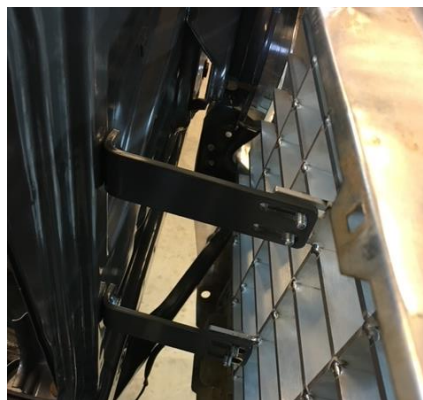
For polished grille, use masking tape on outside perimeter of grille to keep from scratching grille during installation.

Have a friend hold the inner grille against truck and carefully install outer grille onto truck (over headlights)

Adjust inner grille to correct location / side to side & up & down – the bottom rib of the aluminum grille should be just above the outer grille

Once grille is in correct location, mark the drill locations on the core support 4x by tracing holes

Remove the outer grille & inner grille from truck and set aside



Driver side mounts looking toward driver headlight

CAUTION

BEFORE DRILLING INTO ANY VEHICLE CHECK THAT THE AREA TO BE DRILLED IS CLEAR OF RADIATOR, WATER LINES, FUEL LINES, ELECTRICAL WIRING, OR KEY MECHANICAL EQUIPMENT. ALWAYS USE CAUTION WHEN DRILLING OR CUTTING ON A VEHICLE.

Center punch the four holes and drill each of the four holes starting with a small drill bit and increase drill bit size until all four holes reach 3/8

Once holes are drilled, mount grille brackets to truck (it may be easier to do this with grille brackets removed from truck)

Install fender washers on backside of core support under nyloc nuts (locking nuts) and leave loose

Install inner grille into grille brackets and loosely install all hardware

Slip outer grille over inner grille and begin checking fitment side to side / up and down while tightening up all hardware

If bowtie is not already installed, install bow tie onto grille (new bow ties are available from many different retailers) – check that bowtie is centered on grille side to side (make sure that thicker end of bowtie is on bottom of grille) and use stock bowtie hardware to fasten to grille



Double check that all inner grille hardware is tight

Reinstall outer grille hardware onto truck

Reinstall radiator (if it was removed from truck)

Installation is complete



Recommended care:

Regular washing with fresh water and mild car wash detergents followed by rinsing and drying with a soft towel is the best minimum care.

Use a polishing product intended for aluminum as necessary over time.

Thank you for supporting our small business and check out our other products at:

EngineeredVintage.com

