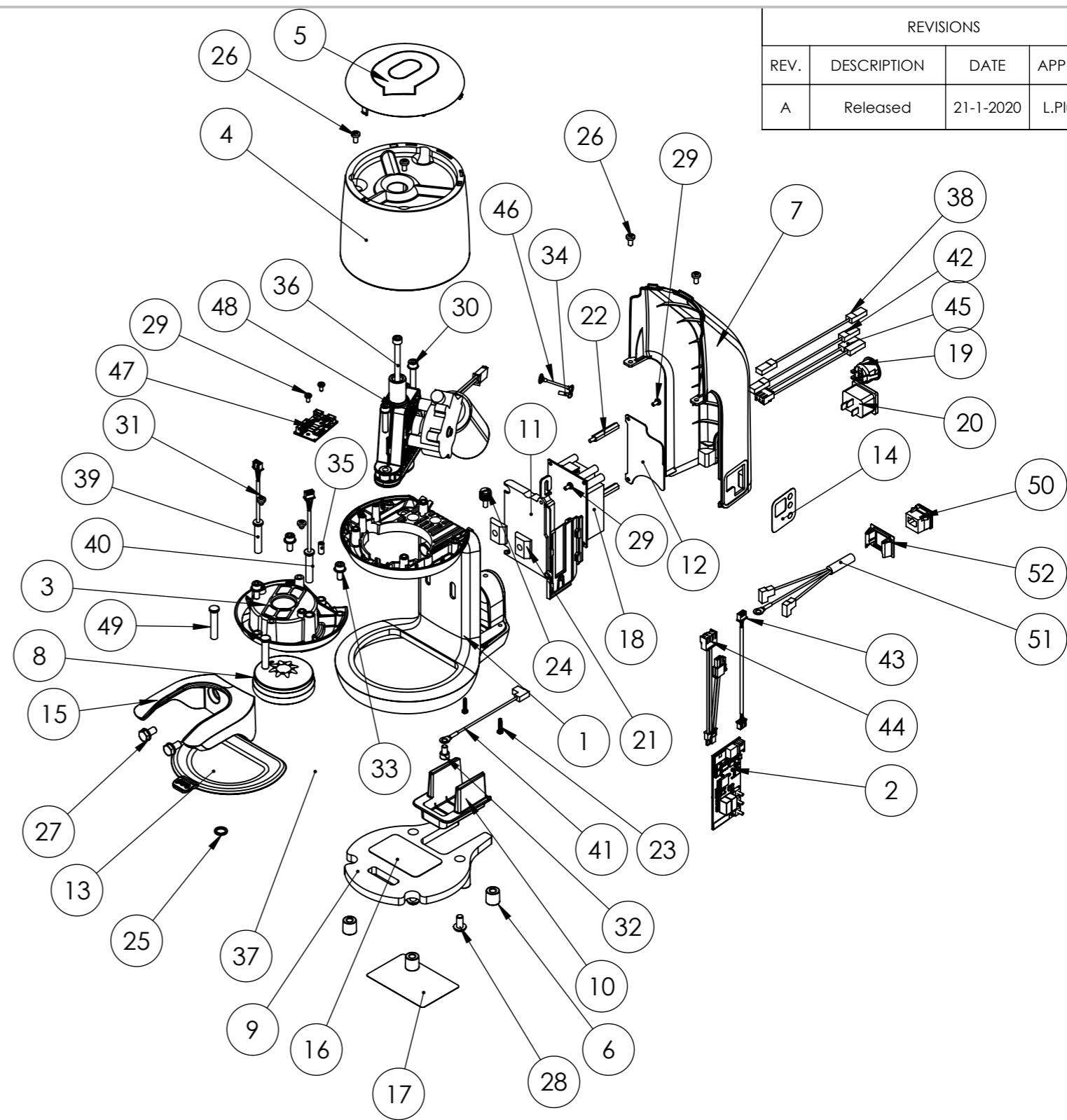


| ITEM NO. | PART NUMBER | DESCRIPTION | QTY. |
|----------|--------------|---|------|
| 1 | 1-210-0343-1 | Main body - Mini - Black. White main body = part 1-210-0344-1 | 1 |
| 2 | 1-210-0101-1 | Motor controller - Q1/Mini | 1 |
| 3 | 1-210-0377-2 | Upper clamp - 71mm - Mini, for tamper base range 56-59mm. For range 53-55 Upper clamp - 66mm - Mini is required, part 1-210-378-1 | 1 |
| 4 | 1-210-0357-1 | Middle cover - Mini - black. White middle cover = part 1-210-0358-1 | 1 |
| 5 | 1-210-0364-1 | Top cover - Mini - black. White top cover = part 1-210-0365-1 | 1 |
| 6 | 1-210-0035-2 | Rubber foot Q-line | 4 |
| 7 | 1-210-0350-1 | Back cover - Mini - Black. White back cover = part 1-210-0350-1 | 1 |
| 8 | 1-210-0043-1 | Tamper base - Mini - 58.3mm. 58.0mm = part 1-210-0050-6, 57.3mm = part 1-210-0051-2, 54.3mm = part 1-210-0046-2, 53.0mm = part 1-210-0055-4 | 1 |
| 9 | 1-210-0376-1 | Counter weight - Mini | 1 |
| 10 | 1-210-0373-2 | Cover - bottom side - Mini | 1 |
| 11 | 1-210-0372-2 | Support frame - converter/ motor controller | 1 |
| 12 | 1-210-0374-1 | EMC shielding plate | 1 |
| 13 | 1-210-0370-2 | Ground coffee basket - Mini, Black | 1 |
| 14 | 1-210-0384-1 | Display sticker - Mini | 1 |
| 15 | 1-210-0383-3 | Lower clamp - Mini (matt chromium) | 1 |
| 16 | 1-210-0323-1 | Sticker tamp setting Q1-M4, sticker with tamp setting P0-P2: P0 = speedy tamp P1 = precise (slow) P2 = single tamp | 1 |
| 17 | 1-210-0064-1 | Product information label | 1 |
| 18 | 1-110-0154-1 | AC/DC converter | 1 |
| 19 | 1-110-0014-1 | On/off switch | 1 |
| 20 | 1-110-0015-1 | C13 power entry socket | 1 |
| 21 | 1-110-0149-1 | Threaded plate - M6 | 2 |
| 22 | 1-110-0089-1 | M3x30 spacer | 2 |
| 23 | 1-110-0166-1 | Screw for plastic, 3x14mm, zinc plated | 2 |
| 24 | 1-110-0167-1 | Slotted thumb screw M4x10 | 1 |
| 25 | 1-110-0151-1 | Ring magnet Ø 12/9 mm, Neodymium | 1 |
| 26 | 1-110-0029-2 | Cross recessed raised cheese head screw M4x10 | 5 |
| 27 | 1-110-0098-1 | Hexagon head cap screw M6x14 + washer (SEM) | 2 |
| 28 | 1-110-0168-1 | Hexagon socket button head screw - M6x8 | 2 |
| 29 | 1-110-0022-2 | Cross head screw M3x8 + washer (SEM) | 5 |
| 30 | 1-110-0020-1 | Hexagon head cap screw M5x25 + washer (SEM) | 2 |
| 31 | 1-110-0133-1 | Cross head screw M4x4 | 2 |
| 32 | 1-110-0143-1 | hexagon head cap screw M5x8 + washer (SEM) | 1 |
| 33 | 1-110-0088-1 | Hexagon head cap screw M5x12 + tooth lock washer (SEM) | 3 |
| 34 | 1-110-0073-2 | Metal screw 2.9x12 | 1 |
| 35 | 1-110-0037-1 | Hexagon socket set screw M5x12, A2 | 1 |
| 36 | 1-110-0075-1 | Hexagon head cap screw M5x100, locking bolt for tamper base | 1 |
| 37 | 1-410-0022-1 | Induction sensor + connector | 1 |
| 38 | 1-410-0013-1 | On/Off switch cable - blue - M-line | 1 |
| 39 | 1-410-0024-1 | Induction sensor 6.5mm + connector (short cable) | 1 |
| 40 | 1-410-0025-1 | Induction sensor 6.5mm + connector (long cable) | 1 |
| 41 | 1-410-0005-2 | Grounding cable | 1 |
| 42 | 1-410-0014-1 | On/Off switch cable - brown - M-line | 1 |
| 43 | 1-410-0026-1 | Cable to sensor connection board + connectors (only for portafilter levelling system) | 1 |
| 44 | 1-410-0012-3 | Motor cable and input cable controller board | 1 |
| 45 | 1-410-0015-2 | Input cable converter - M-line | 1 |
| 46 | 1-410-0009-3 | Earthing cable DC motor and top plate | 1 |
| 47 | 1-410-0023-1 | Sensor controller board (only for portafilter levelling system) | 1 |
| 48 | 1-310-0008-1 | Drive unit - Mini | 1 |
| 49 | 1-210-0098-1 | Dummy sensor - 6.5mm, POM. For units without extra portafilter sensors. | 2 |
| 50 | 1-110-0021-1 | Cable fixation clamp, for hard-wired version only | 1 |
| 51 | 1-410-0007-4 | Power cable KOREA + connectors, hard-wired. Australian hard-wired = part 1-410-0027-1 | 1 |
| 52 | 1-210-0032-1 | Cable fixation support, for hard-wired only | 1 |
| 53 | 1-410-0022-1 | Induction sensor + connector | 1 |



| REVISIONS | | | |
|-----------|-------------|-----------|------------|
| REV. | DESCRIPTION | DATE | APPROVED |
| A | Released | 21-1-2020 | L.Pluimers |

| | | | |
|--|--------------------------------------|----------------------|-----------------------------|
| Geometric dimensioning and tolerancing according to NEN-ISO1101 and NEN-ISO 2768-1 | FINISH: | DO NOT SCALE DRAWING | DEBUR AND BREAK SHARP EDGES |
| Barista Technology B.V. Kotterstraat 14 3133 KW Vlaardingen The Netherlands | | SCALE:1:5 | |
| MATERIAL: | Part name: PUQPRESS - Mini | | |
| WEIGHT: g | Part number.: All model variants | | A3 |
| Doc: 110-1 | | Page: 1 of 1 | |