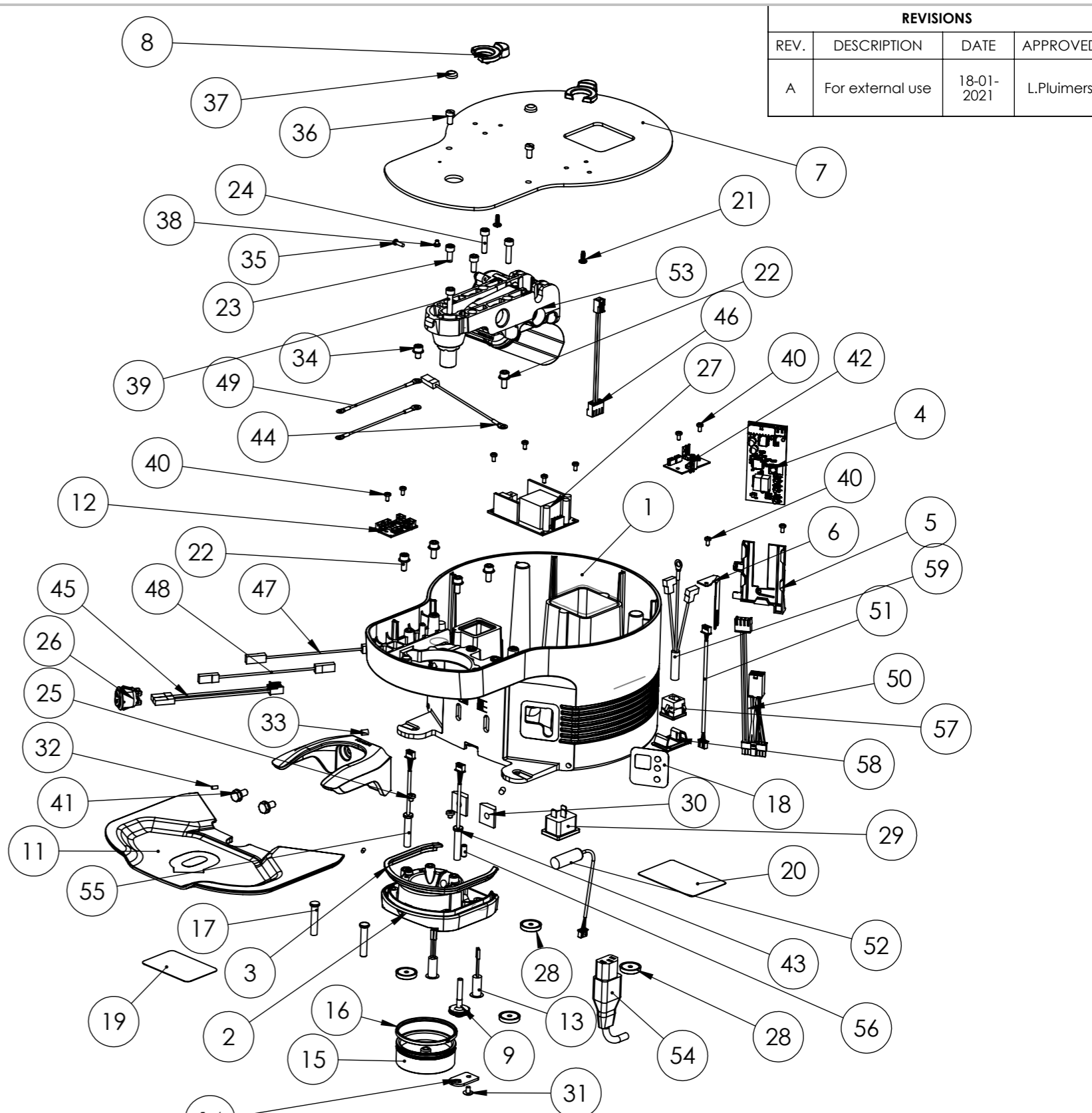


ITEM NO.	PART NUMBER	DESCRIPTION	QTY.
1	1-210-0290-2	Main body - M5 black. White main body = part 1-210-0291-1	1
2	1-210-0243-6	Upper clamp - 71mm - M-line - low type, (for tamper base rang 56-59mm). For tamper 53-55, use Upper clamp 66mm - M-line low type, part 1-210-244-5.	1
3	1-210-0251-2	Contour ring upper clamp - M3/4/5 - Black Part 1-210-0250-2 is white ring for white main body	1
4	1-210-0100-1	Motor controller board for encoder motor	1
5	1-210-0026-1	Motor controller - support frame	1
6	1-210-0276-1	Motor controller bracket - M3/4/5	1
7	1-210-0294-1	Top plate M5 - black. White to plate = part 1-210-0295-1	1
8	1-210-0278-2	Rubber feet aligner	2
9	1-210-0271-1	Shaft lower clamp adjustment - M-line - low type	1
10	1-210-0246-4	Lower clamp M-line low type	1
11	1-210-0296-1	Ground coffee basket - M5	1
12	1-410-0023-1	Sensor controller board	1
13	1-410-0017-1	LED lamp holder + cable	2
14	1-210-0209-1	Bracket for lower clamp adjustment - M2	1
15	1-210-0256-1	Tamper base - low type - 58.0mm. Part 1-210-0255-1 = 58.3mm, 1-210-0258-1 = 54.3mm, 1-210-0259- = 53.0mm	1
16	1-210-0269-2	Wear ring 61x2.5 small type, white. Part 1-210-0270-2 = ring for 54.3 and 53.0mm (grey colour)	1
17	1-210-0098-1	Dummy sensor - 6.5mm. For units without extra portafilter sensors.	2
18	1-210-0275-1	Display sticker - M3/M5	1
19	1-210-0322-1	Sticker tamp settings Q2 - M2- M3 - M5, sticker with tamp settings P0 - P4	1
20	1-210-0261-1	Product information sticker.	1
21	1-110-0150-1	Screw for plastic, 3.5x10mm	2
22	1-110-0088-1	Hexagon head cap screw M5x12 + tooth lock washer (SEM)	5
23	1-110-0026-1	Hexagon head cap screw, M5x12	2
24	1-110-0027-1	Hexagon head cap screw M5x25	2
25	1-110-0133-1	Cross head screw m4x4	2
26	1-110-0014-1	ON/OFF switch	1
27	1-110-0154-1	AC/DC converter	1
28	1-110-0090-1	Rubber feet	4
29	1-110-0015-1	C13 Euro socket	1
30	1-110-0149-1	Threaded plate - M6	2
31	1-110-0099-1	Slotted mushroom head screw M4x6	1
32	1-110-0157-1	Grooved pin, 3x6mm	2
33	1-110-0152-1	Rod magnet	2
34	1-110-0143-1	hexagon head cap screw M5x8 + tooth lock washer (SEM)	1
35	1-110-0073-1	Cross recessed pan head tapping screw PH - 2.9x13 (SEM)	1
36	1-110-0155-1	Slotted cheese head screw M5x10	2
37	1-110-0156-1	Cover Cap - flat-head screw M5	2
38	1-110-0136-1	Cross head screw M3x4	1
39	1-110-0153-1	Hexagon head cap screw, M5x30	1
40	1-110-0022-1	Cross head screw M3x8 + lock washer (SEM)	10
41	1-110-0098-1	Hexagon head cap screw M6x14 + washer (SEM)	2
42	1-410-0021-1	PCB junction box	1
43	1-410-0024-1	Induction sensor 6.5mm + connector (short cable)	1
44	1-410-0005-2	Grounding cable	1
45	1-410-0015-2	Input cable converter - M-line	1
46	1-410-0016-5	Connection cable junction box	1
47	1-410-0013-1	On/Off switch cable - blue - M-line	1
48	1-410-0014-1	On/Off switch cable - brown - M-line	1
49	1-410-0009-3	Earthing cable DC motor and top plate	2
50	1-410-0029-4	ENCODER motor cable and input cable controller board	1
51	1-410-0026-1	Cable to sensor connection board + connectors	1
52	1-410-0022-1	Induction sensor + connector	1
53	1-310-0015-1	Drive unit - M-line low type for M3 and M5 units. Encoder motor.	1
54	1-110-0016-1	Power cable - EU plug. Part 1-110-0018-1 = AUS plug, 1-110-0007-1 = Japan plug, 1-110-0017-1 = UK plug, 1-110-0011-1 = USA plug	1
55	1-410-0025-1	Induction sensor 6.5mm + connector (long cable)	1
56	1-110-0037-1	Hexagon socket set screw - M5x12	1
57	1-110-0021-1	Cable fixation clamp, clamp to fix cable, for hard-wired version only	1
58	1-210-0032-1	Cable fixation support, ABS, for hard-wired version only	1
59	1-410-0007-4	Power cable KOREA + connectors, hard-wired. Australian hard-wired = part 1-410-0027-1	1



REVISIONS			
REV.	DESCRIPTION	DATE	APPROVED
A	For external use	18-01-2021	L.Pluimers

Geometric dimensioning and tolerancing according to NEN-ISO1101 and NEN-ISO 2768-1	FINISH:	DO NOT SCALE DRAWING	DEBUR AND BREAK SHARP EDGES
Barista Technology B.V. Kotterstraat 14 3133 KW Vlaardingen The Netherlands		Part name: PUQPRESS M5	
MATERIAL:	Part number.: All model variants		A3
WEIGHT: g	Doc: 110-1	Page: 1 of 1	