

Qty. Description

1 HYDRO MULTI-E 2 CRE 10-4



Note! Product picture may differ from actual product

Product No.: [99614349](#)

GRUNDFOS Hydro Multi-E booster sets are designed for the transfer and pressure boosting of clean water in waterworks, blocks of flats, hotels, industry, hospitals, schools, etc.

GRUNDFOS Hydro Multi-E booster sets consists of 2 to 3 CR(N)E pumps coupled in parallel and mounted on a common base frame provided with all the necessary fittings.

Hydro Multi-E is mounted on a common base frame made in black painted mild steel.

On the suction side are fitted a suction manifold (AISI 316 or EN 1.4571) and two pressure transmitters which are mounted on an isolating valve.

On the discharge side of the pumps are fitted a non-return valve, an isolating valve, a pressure gauge, two pressure transmitters mounted on an isolating valve, a diaphragm tank and a stainless steel discharge manifold (AISI 316 or EN 1.4571).

The Hydro Multi-E is fitted with an on/off-switch for the supply voltage.

The Hydro Multi-E is designed for maintaining a constant pressure regardless of flow changes and fluctuation.

The internal PI-controller regulates the number of running pumps and the speed of the pumps according to the required flow.

The system can be operated directly on the graphical display of any of the pumps or via Grundfos GO (available as accessory)

Besides the system features:

- 2 Relay outputs
- 2 Digital inputs (one used for external start/stop)
- 2 Digital configurable input/output (one used for external start/stop)
- 3 analogue inputs (one used for discharge pressure and one used for inlet pressure)
- Multi-Master functionality
- 2 Limit exceed functions (one used for dry running protection)
- Set-point influence
- Pipe filling function
- Proportional pressure and High Efficient PM motors

Available communication protocols:

- LON
- PROFIBUS DP
- PROFIBUS IO
- BACnet MS/TP
- BACnet IP
- Modbus RTU
- Modbus TCP

Company name: Parkway Process Solutions
Created by: Parkway Process Solutions
Phone: +61 (0) 390 693 200
Email: solutions@pwnps.com
Date: 11/15/2021

Qty. Description

Ethernet IP
Cellular 3G/4G
GiC/GRM

When delivered, the GRUNDFOS Hydro Multi-E booster set is factory tested and ready for operation.

Liquid:

Pumped liquid: Water
 Liquid temperature range: 5 .. 60 °C
 Selected liquid temperature: 20 °C
 Density: 998.2 kg/m³

Materials:

Pump housing: Cast iron

Installation:

Maximum operating pressure: 10 bar
 Maximum permissible inlet pressure: PN 10 bar
 Flange standard: DIN ISO 7/1
 Manifold inlet: R 2 1/2
 Manifold outlet: R 2 1/2

Electrical data:

IE Efficiency class: IE5
 Power (P2) main pump: 1.5 kW
 Mains frequency: 50 / 60 Hz
 Rated voltage: 3 x 380-415 V
 Rated current: 6.2 A
 Start. method: electronically
 Enclosure class (IEC 34-5): IP55

Tank:

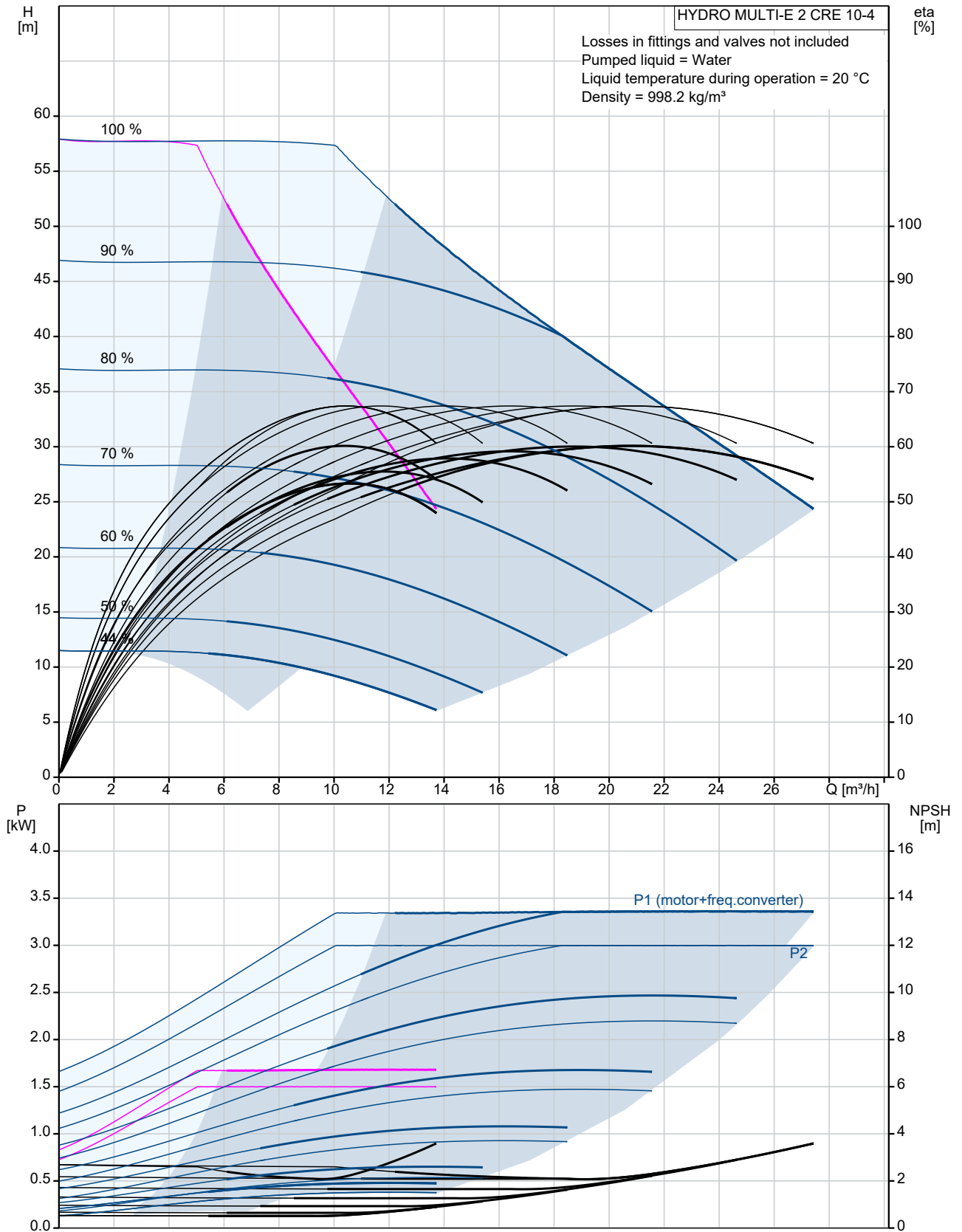
Volume of pressure tank: 24 l
 Diaphragm tank: Yes

Others:

Net weight: 140 kg
 Gross weight: 170 kg
 Shipping volume: 1.01 m³
 Language: Multi
 Country of origin: SG
 Custom tariff no.: 8413709062

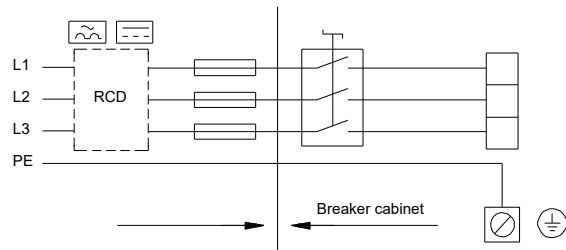
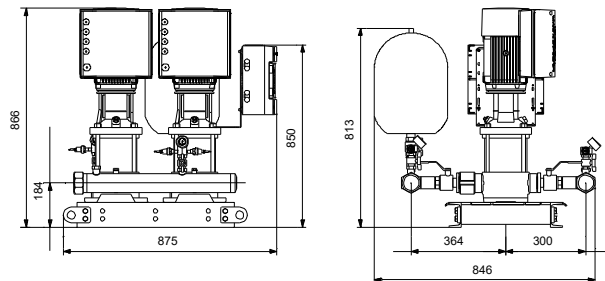
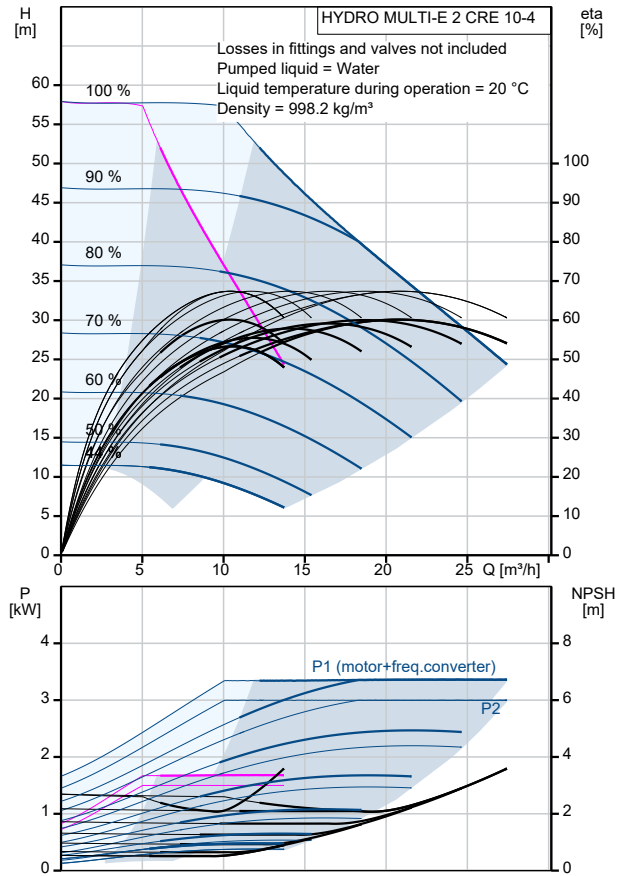
Company name: Parkway Process Solutions
Created by: Parkway Process Solutions
Phone: +61 (0) 390 693 200
Email: solutions@pwnps.com
Date: 11/15/2021

99614349 HYDRO MULTI-E 2 CRE 10-4



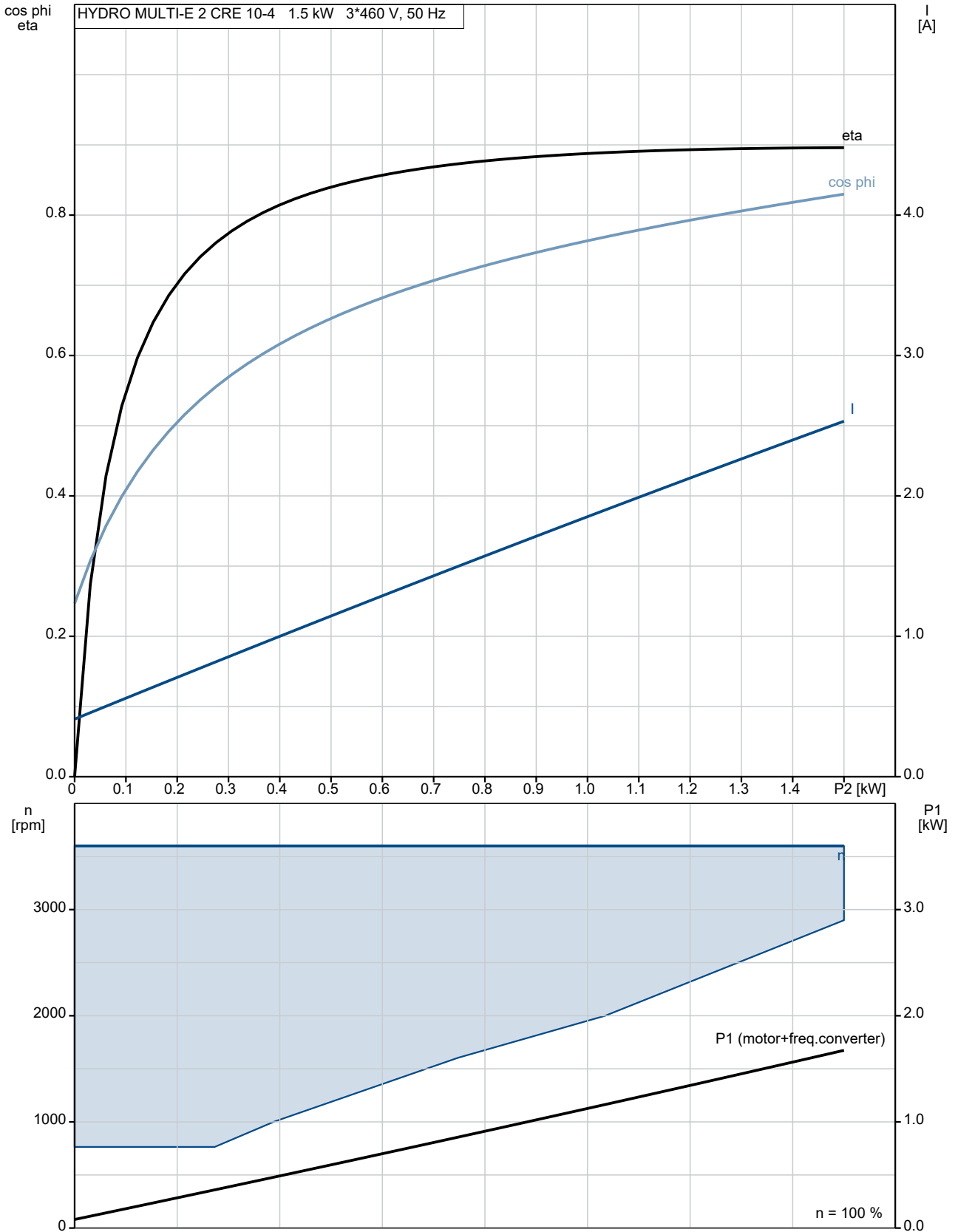
Company name: Parkway Process Solutions
Created by: Parkway Process Solutions
Phone: +61 (0) 390 693 200
Email: solutions@pwnps.com
Date: 11/15/2021

Description	Value
General information:	
Product name:	HYDRO MULTI-E 2 CRE 10-4
Product No:	99614349
EAN number:	5713831935742
Price:	
Technical:	
Max flow:	36.2 m ³ /h
Max flow:	36.2 m ³ /h
Min flow system:	4.8 m ³ /h
Head max:	60 m
Pump name:	CRE 10-4
Number of pumps:	2
Materials:	
Pump housing:	Cast iron
Manifolds:	Stainless steel
Installation:	
Maximum operating pressure:	10 bar
Maximum permissible inlet pressure:	PN 10 bar
Flange standard:	DIN ISO 7/1
Manifold inlet:	R 2 1/2
Manifold outlet:	R 2 1/2
Liquid:	
Pumped liquid:	Water
Liquid temperature range:	5 .. 60 °C
Selected liquid temperature:	20 °C
Density:	998.2 kg/m ³
Electrical data:	
IE Efficiency class:	IE5
Power (P2) main pump:	1.5 kW
Mains frequency:	50 / 60 Hz
Rated voltage:	3 x 380-415 V
Rated current:	6.2 A
Start. method:	electronically
Enclosure class (IEC 34-5):	IP55
Tank:	
Volume of pressure tank:	24 l
Diaphragm tank:	Yes
Others:	
Net weight:	140 kg
Gross weight:	170 kg
Shipping volume:	1.01 m ³
Language:	Multi
Sales region:	Asia
Product range:	I
Country of origin:	SG
Custom tariff no.:	8413709062



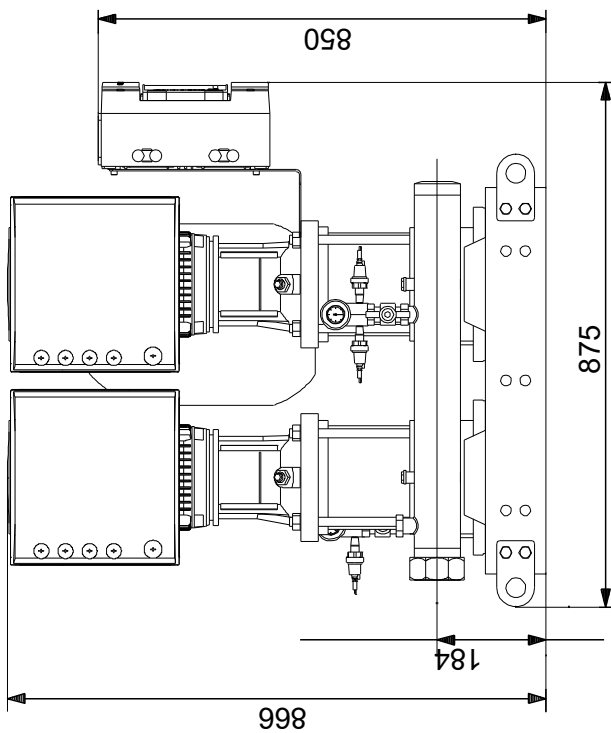
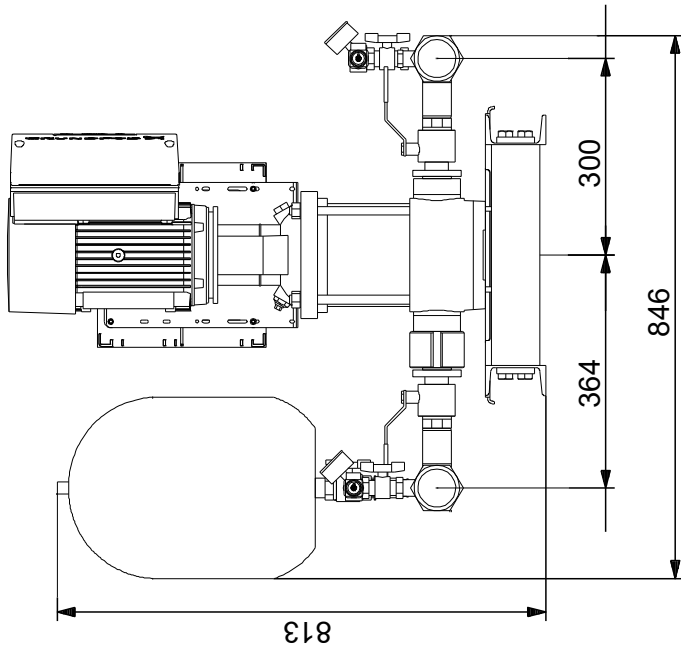
Company name: Parkway Process Solutions
Created by: Parkway Process Solutions
Phone: +61 (0) 390 693 200
Email: solutions@pwnps.com
Date: 11/15/2021

99614349 HYDRO MULTI-E 2 CRE 10-4



Company name: Parkway Process Solutions
Created by: Parkway Process Solutions
Phone: +61 (0) 390 693 200
Email: solutions@pwnps.com
Date: 11/15/2021

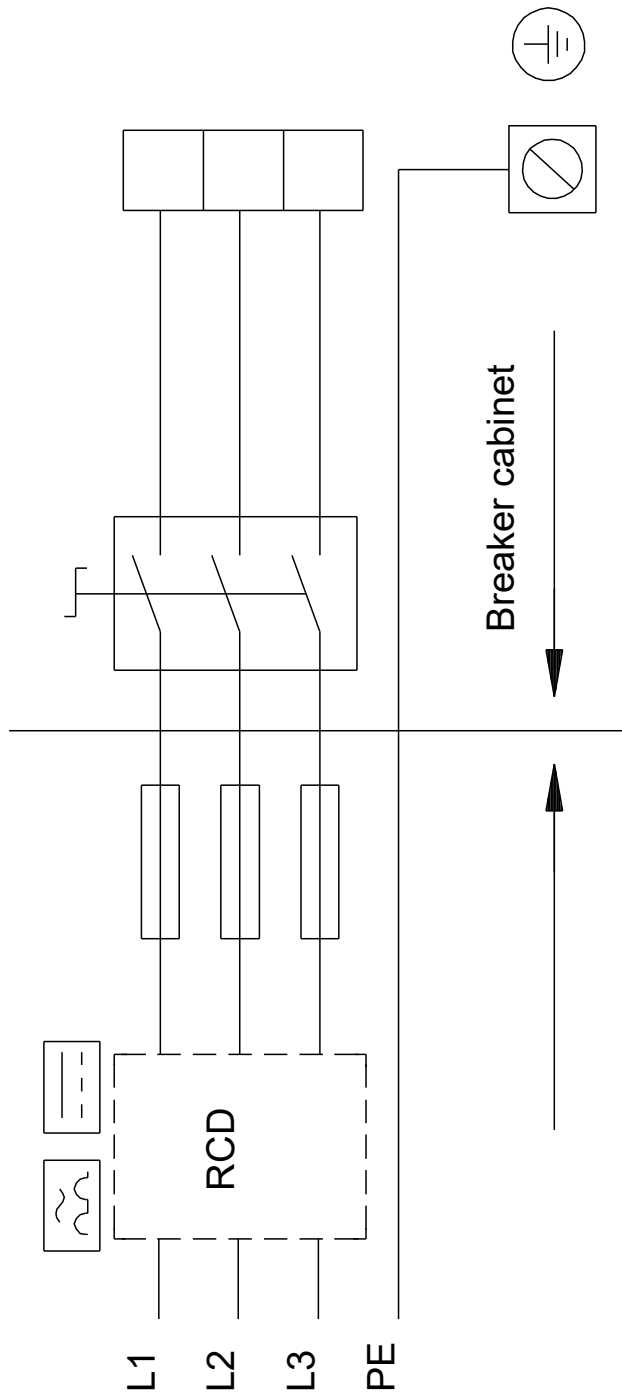
99614349 HYDRO MULTI-E 2 CRE 10-4



Note! All units are in [mm] unless others are stated.
Disclaimer: This simplified dimensional drawing does not show all details.

Company name: Parkway Process Solutions
Created by: Parkway Process Solutions
Phone: +61 (0) 390 693 200
Email: solutions@pwnps.com
Date: 11/15/2021

99614349 HYDRO MULTI-E 2 CRE 10-4



Note! All units are in [mm] unless others are stated.

Company name: Parkway Process Solutions
Created by: Parkway Process Solutions
Phone: +61 (0) 390 693 200
Email: solutions@pwnps.com
Date: 11/15/2021

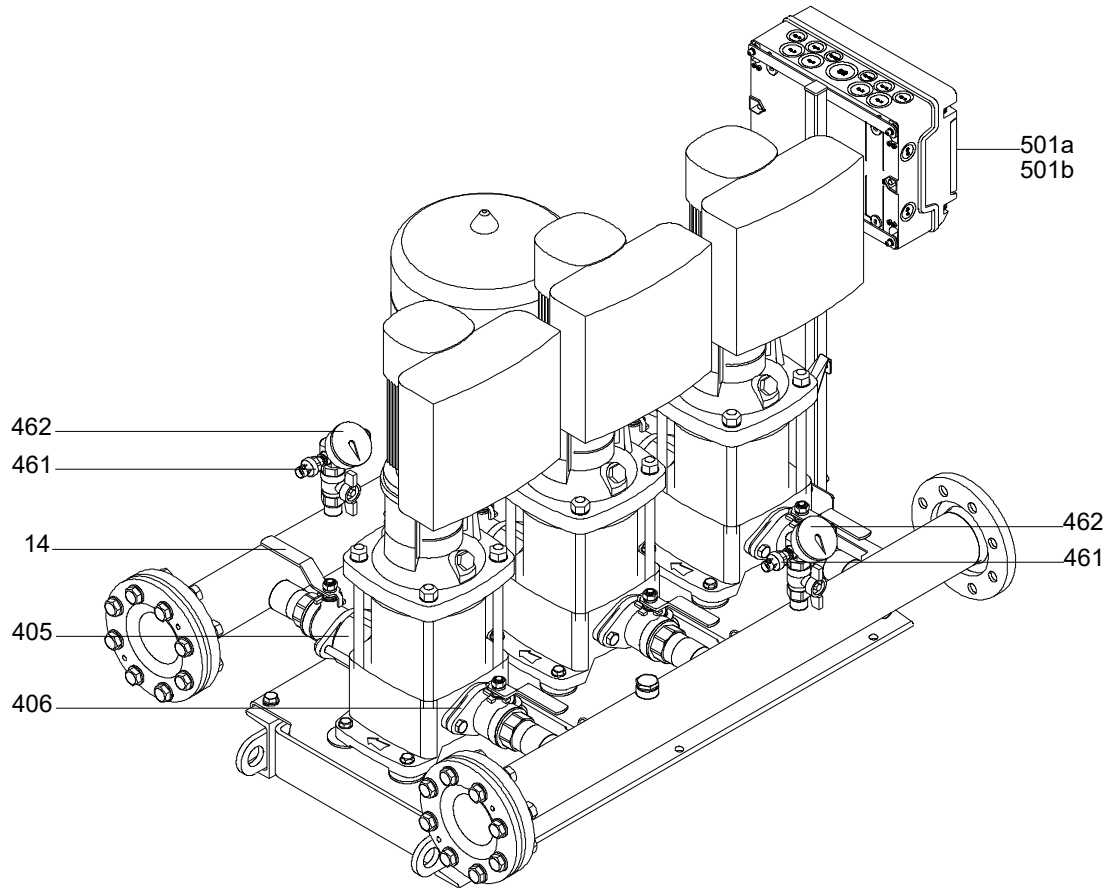
Order Data:

Product name: HYDRO MULTI-E 2 CRE 10-4
Amount: 1
Product No: 99614349
Price:

Total: Price on request

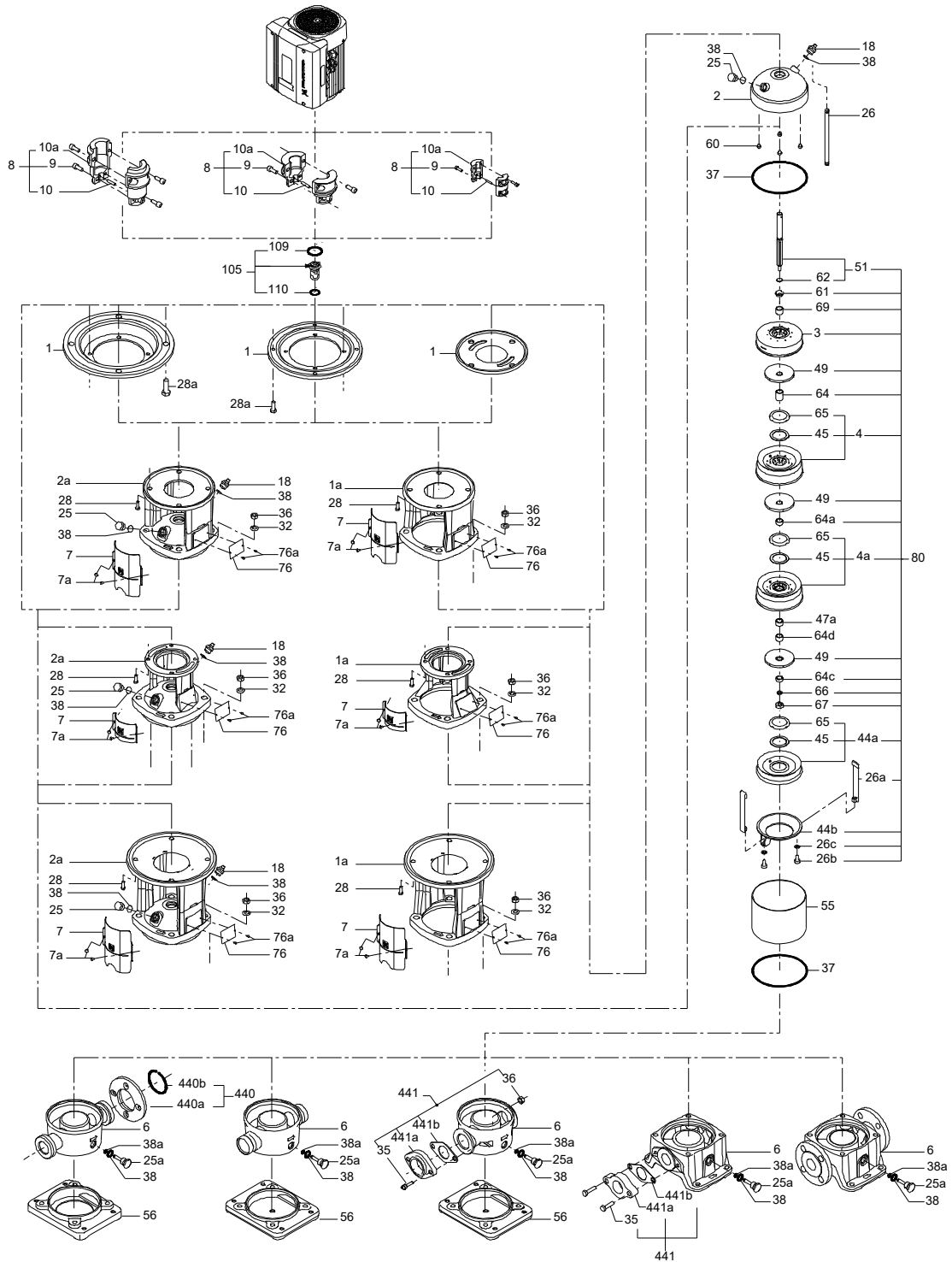
Company name: Parkway Process Solutions
Created by: Parkway Process Solutions
Phone: +61 (0) 390 693 200
Email: solutions@pwnps.com
Date: 11/15/2021

(TM076325 for project Multi-E Asia Pacific)



Company name: Parkway Process Solutions
Created by: Parkway Process Solutions
Phone: +61 (0) 390 693 200
Email: solutions@pwnps.com
Date: 11/15/2021

(tm069460 for MECR 10 standard)



Company name: Parkway Process Solutions
Created by: Parkway Process Solutions
Phone: +61 (0) 390 693 200
Email: solutions@pwnps.com
Date: 11/15/2021

Spare parts HYDRO MULTI-E 2 CRE 10-4, Product No. 99614349
Produced After 1948 (production year and week number)

Pos	Description	Annotation	Classification Data	Part no.	Qty.	Unit
-	Kit, Manometer 0-10 bar			97896856	2	pcs
462	Pressure gauge				1	
-	Kit, Non-return valve			96637444	1	pcs
405	Non-return valve				1	
-	Spare, Cabinet			99876844	1	pcs
501a	Cabinet				1	
-	Spare, Fusebox			99876818	1	pcs
501b	Fusebox				1	
-	Spare, Gasket			99876893	4	pcs
406	Gasket		Internal diameter: 44 Outer diameter: 60 Thickness: 2		1	
-	Spare, PressureTr. 0-10 bar			99257835	1	pcs
461	Pressure transducer				1	
-	Spare, PressureTr. 0-6 bar			99257833	1	pcs
461	Pressure transducer				1	
-	Spare, Valve with flange			99876846	2	pcs
14	Valve cpl.				1	
-	Pump				2	pcs
-	Kit, Chamber stack			96508406	1	
-	80	Chamber stack	Bearing type: SIC			
-	3	Top intermediate chamber				
		Spare, Turbulence optimizer KP				
		Guide vane				
-	4a	Intermediate chamber cpl.				
		Guide cup				
		Bearing plate				
		Guide vane				
3		Intermediate chamber				
45		Neck ring cpl.				
47		Bearing bush				
65		Retainer				
-	4	Intermediate chamber cpl.				
		Sand Lifter				
		Guide cup				
		Front plate				
		Guide vane				
3		Intermediate chamber				
45		Neck ring cpl.				
65		Retainer				
26a		Strap cpl.				
26.c		Washer	Designation: DIN 125A Thickness: 1,6			
26		Hex head screw				
44b		Inlet part				
-	44a	Inlet part cpl.				
		Guide cup				
		Inlet part				
45		Neck ring cpl.				
65		Retainer				
47a		Bearing ring				

Company name: Parkway Process Solutions
Created by: Parkway Process Solutions
Phone: +61 (0) 390 693 200
Email: solutions@pwnps.com
Date: 11/15/2021

Pos	Description	Annotation	Classification Data	Part no.	Qty.	Unit
49	Impeller cpl.					
- 51	Shaft, spline, cpl.					
	Bar					
62	Stop ring					
64c	Spacer					
64a	Spacing bush		Length (mm): 9.00			
64.d	Spacer					
64	Spacing pipe		Length (mm): 29.05			
66	Wedge lock washer					
67	Lock nut		Thread: M8			
69	Spacing bush		Length (mm): 18.00			
-	Kit, Coupling			96511350	1	
	Adjusting fork					
9	Hex socket head cap screw		Designation: DIN 912			
			Length (mm): 25			
			Thread: M8			
10a	Coupling half					
10	Shaft pin		Diameter: 5			
			Length (mm): 26			
-	Kit, Coupling guard			96509612	1	
7.a	Combi Slot Torx screw					
7	Coupling guard					
-	Kit, Gaskets			96509609	1	
	Gasket					
24	O-ring					
37	O-ring					
38	O-ring					
38	O-ring					
38	O-ring					
60	Spring					
415	Gasket		Internal diameter: 44			
			Outer diameter: 60			
			Thickness: 2			
441b	Gasket		Internal diameter: 49			
			Outer diameter: 92			
			Thickness: 2			
-	Kit, Plug			96511311	1	
- 18	Air vent screw					
	Spindle					
	Plug					
25a	Drain plug					
25	Plug					
38	O-ring					
38	O-ring					
38	O-ring					
38	O-ring		Diameter: 5,3			
			Material type: FKM			
			Thickness: 2,4			
38	O-ring		Diameter: 16,3			
			Material type: FKM			
			Thickness: 2,4			
38	O-ring		Diameter: 16,3			
			Material type: FKM			
			Thickness: 2,4			
-	Kit, Shaft seal HQQE			96511844	1	
105	Shaft seal		Material type: HQQE			

Company name: Parkway Process Solutions
Created by: Parkway Process Solutions
Phone: +61 (0) 390 693 200
Email: solutions@pwnps.com
Date: 11/15/2021

Pos	Description	Annotation	Classification Data	Part no.	Qty.	Unit
-	Kit, Wear parts			96511889	1	
- 4a	Intermediate chamber cpl.					
	Sand Lifter					
	Guide cup					
	Bearing plate					
	Guide vane					
3	Intermediate chamber					
45	Neck ring cpl.					
47	Bearing bush					
65	Retainer					
26.c	Washer		Designation: DIN 125A Thickness: 1,6			
26.b	Hex head screw					
45	Neck ring cpl.					
47a	Bearing ring					
62	Retaining ring					
64c	Spacer					
64a	Spacing bush		Length (mm): 9.00			
64.d	Spacer					
65	Retainer					
66	Wedge lock washer					
67	Lock nut		Thread: M8			
-	Motor				1	
-	Kit, Adapter			98345796		
- 252a	Adapter set					
	Adapter					
	Adapter					
167	Cable gland					
-	Kit, Bearing cpl.			98330605		
111	Ball bearing		Designation: 6204.2Z.C3.SYN			
154	Ball bearing					
156d	Gasket		Internal diameter: 114,80 Outer diameter: 121,20 Thickness: 0,25			
156c	Seal ring					
156c	Seal ring					
157	O-ring		Diameter: 47 Material type: NBR Thickness: 3			
158	Waved washer					
-	Kit, Blanking plug			98334761		
252b	Plug cpl.					
-	Kit, Cable gland			98337336		
- 293	Cable glands set			98271484		
167	Cable gland					
167	Cable gland					
-	Kit, Connector plugs			98403113		
266	Connector plug 10-pole					
266	Connector plug 2-pole					
266	Connector plug 8-pole					
266	Connector plug 8-pole					
266	Connector plug 8-pole					
266	Connector plug 3-pole					
266	Connector plug 3-pole					
266	Connector plug 3-pole					
-	Kit, Control box			98606009		

Company name: Parkway Process Solutions
Created by: Parkway Process Solutions
Phone: +61 (0) 390 693 200
Email: solutions@pwnps.com
Date: 11/15/2021

Pos	Description	Annotation	Classification Data	Part no.	Qty.	Unit
152	Pan head thread forming screw					
166	Torx Screw					
178	Pan head thread forming screw					
251d	Pan head thread forming screw					
251b	Control box					
251a	Control box					
252b	Plug cpl.					
268a	Base					
268	Pan head screw					
273b	Battery					
273	Funct. Module cpl.					
275a	Pin					
277a	Cross recess Pan head screw					
277a	Cross recess Pan head screw					
277a	Cross recess Pan head screw					
277	Isolation cover					
286	Spacer					
286	Spacer					
287	Cover					
288b	Retaining ring					
288a	Pan head thread forming screw					
288	Wire clamp					
289	Wire clamp					
290	Control panel, cpl.					
-	Kit, Control box upper				98334769	
251d	Pan head thread forming screw					
251b	Control box					
-	Kit, Control panel				98939971	
290	Control panel, cpl.					
-	Kit, Cover				98330622	
287	Cover					
-	Kit, Fan				98290124	
152	Pan head thread forming screw					
156c	Seal ring					
156	Fan					
-	Kit, Flange (DE)				98290128	
156d	Gasket		Internal diameter: 114,80 Outer diameter: 121,20 Thickness: 0,25			
156b	Flange					
185	Cross recess Pan head screw					
186	Drain plug					
188	Retaining ring					
-	Kit, Funct. module				98334777	
273a	Cross recess Pan head screw					
273	Funct. Module cpl.					
275a	Pin					
286	Spacer					
-	Kit, Isolation cover				98330625	
277a	Cross recess Pan head screw					
277	Isolation cover					
-	Kit, Lower part cpl.				98330619	
178	Pan head thread forming screw					
251a	Control box cpl.					
275a	Pin					
277a	Cross recess Pan head screw					

Company name: Parkway Process Solutions
Created by: Parkway Process Solutions
Phone: +61 (0) 390 693 200
Email: solutions@pwnps.com
Date: 11/15/2021

Pos	Description	Annotation	Classification Data	Part no.	Qty.	Unit
277	Isolation cover					
-	Kit, Motor			98293853		
	Terminal					
99a	Retaining ring					
99	Retaining ring					
111	Ball bearing		Designation: 6204.2Z.C3.SYN			
150	Stator					
150	Stator housing					
151	Fan cover					
152	Pan head thread forming screw					
154	Ball bearing					
156d	Gasket		Internal diameter: 114,80 Outer diameter: 121,20 Thickness: 0,25			
156c	Seal ring					
156c	Seal ring					
156b	Flange					
156	Fan					
157	O-ring		Diameter: 47 Material type: NBR Thickness: 3			
158	Waved washer					
172	Shaft w/rotor					
178	Pan head thread forming screw					
185	Cross recess Pan head screw					
186	Drain plug					
203	Terminal plug					
289a	Pan head thread forming screw					
-	Kit, Plug			99369622		
	Terminal					
203	Terminal plug					
205	Pan head thread forming screw					
-	Kit, Screws			98330627		
268a	Base					
268	Pan head screw					
288b	Retaining ring					
288a	Pan head thread forming screw					
288	Wire clamp					
289a	Pan head thread forming screw					
289	Wire clamp					
	Pan head thread forming screw			99598708		
111	Ball bearing		Designation: 6204.2Z.C3.SYN	97914979		
152	Pan head thread forming screw			99834207		
152	Pan head thread forming screw			99814578		
156d	Gasket		Internal diameter: 114,80 Outer diameter: 121,20 Thickness: 0,25	99406425		
156	Fan			96591801		
159a	Seal ring			97689816		
186	Drain plug			99980519		
251d	Pan head thread forming screw			98995460		
266	Connector plug 3-pole			99421265		
2a	Pump head			98785091	1	
+ 3	Top intermediate chamber			96538970	1	
+ 3	Top intermediate chamber			98415149	1	
+ 4a	Intermediate chamber cpl.			98371073	1	

Company name: Parkway Process Solutions
Created by: Parkway Process Solutions
Phone: +61 (0) 390 693 200
Email: solutions@pwnps.com
Date: 11/15/2021

Pos	Description	Annotation	Classification Data	Part no.	Qty.	Unit
+ 4a	Intermediate chamber cpl.			96538850	1	
+ 4a	Intermediate chamber cpl.			98371072	1	
- 4	Intermediate chamber cpl.			96538818	2	
3	Intermediate chamber			96536045		
3	Intermediate chamber			98415145		
45	Neck ring cpl.			96538856		
65	Retainer			98354675		
+ 4	Intermediate chamber cpl.			98371071	2	
6	Base			98818812	1	
7.a	Combi Slot Torx screw			96886324	4	
10	Shaft pin		Diameter: 5	96536473	1	
			Length (mm): 26			
10	Shaft pin		Diameter: 5	96587588	1	
			Length (mm): 26			
+ 18	Air vent screw			96547461	1	
+ 18	Air vent screw			95061351	1	
25	Plug			96536013	1	
25a	Drain plug			96535881	1	
26a	Strap cpl.			98952934	2	
26.c	Washer		Designation: DIN 125A	99262704	2	
			Thickness: 1,6			
26.c	Washer		Designation: DIN 125A	99886930	2	
			Thickness: 1,6			
26	Staybolt			98982839	4	
28	Hex head screw		Length (mm): 25	99335941	4	
			Thread: M8			
28	Hex head screw		Length (mm): 45 MM	96620474	4	
			Thread: M12			
32	Washer		Designation: DIN 125 A	98923051	4	
			Internal diameter: 17			
			Outer diameter: 30			
			Thickness: 3			
36	Hex nut		Thread: M16	96620480	4	
37	O-ring			96538857	2	
38	O-ring			99198791	1	
38	O-ring			99198815	2	
38	O-ring			99412727	2	
44b	Inlet part			98814595	1	
+ 44a	Inlet part cpl.			97973678	1	
47a	Bearing ring			96538795	1	
49	Impeller cpl.			96538796	4	
49	Impeller cpl.			98394441	4	
+ 51	Shaft, spline, cpl.			98368606	1	
55	Outer sleeve			98812620	1	
60	Spring			96538963	4	
64c	Spacer			97980241	1	
64a	Spacing bush		Length (mm): 9.00	96538950	1	
64.d	Spacer			97516851	1	
64	Spacing pipe		Length (mm): 29.05	96535101	2	
66	Wedge lock washer			96536157	1	
66	Wedge lock washer			92575609	1	
67	Lock nut		Thread: M8	98277008	1	
69	Spacing bush		Length (mm): 18.00	96538948	1	
76a	Rivet			96620489	1	
105	Shaft seal		Material type: HQQE	96538914	1	
415	Gasket		Internal diameter: 44	96536048	2	

Company name: Parkway Process Solutions
Created by: Parkway Process Solutions
Phone: +61 (0) 390 693 200
Email: solutions@pwnps.com
Date: 11/15/2021

Pos	Description	Annotation	Classification Data	Part no.	Qty.	Unit
			Outer diameter: 60			
			Thickness: 2			
415	Gasket		Internal diameter: 44	99364495	2	
			Outer diameter: 60			
			Thickness: 2			
440a	Flange		Thread: RP 1 1/2	99037027	2	