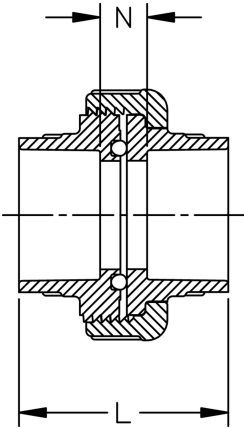
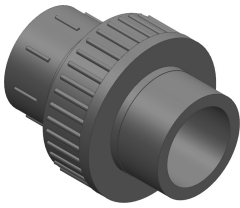


## Union Type 375 (S x S) Schedule 80 Harvel® PVC

235 psi @ 73°F (16.2 bar @ 22.7°C)



Size (inch)	P/L	EPDM Part No.	FKM Part No.	Pack Qty	L (inch)	N (inch)
½	608	<b>897-375-005</b>	<b>857-375-005</b>	5	2.56	0.78
¾	608	<b>897-375-007</b>	<b>857-375-007</b>	5	2.80	0.76
1	608	<b>897-375-010</b>	<b>857-375-010</b>	5	3.22	0.89
1 ¼	608	<b>897-375-012</b>	<b>857-375-012</b>	5	3.56	0.99
1 ½	608	<b>897-375-015</b>	<b>857-375-015</b>	5	3.76	0.92
2	608	<b>897-375-020</b>	<b>857-375-020</b>	2	4.18	1.11

The technical data are not binding. They neither constitute expressly warranted characteristics nor guaranteed properties nor a guaranteed durability. They are subject to modification. Our General Terms of Sale apply.

Georg Fischer Piping Systems Ltd, Postfach, CH-8201 Schaffhausen/Switzerland

Phone +41 -(0)52-631 1111

e-mail: [info.ps@georgfischer.com](mailto:info.ps@georgfischer.com)

Internet: <http://www.gfps.com>