

Qty.	Description
------	-------------

1	DDA 120-7
---	-----------



Note! Product picture may differ from actual product

Product No.: [99246423](#)

Type key:

DDA 120-7 AR-PV/T/C-F-31U3U3IG

The SMART Digital DDA is a compact positive displacement, diaphragm dosing pump with variable-speed drive (PMS motor) and intelligent control electronics with minimum energy consumption.

The SMART Digital Dosing series operates at full stroke length to ensure optimum accuracy, priming and suction, even for high-viscosity or degassing liquids.

The duration of each discharge stroke varies according to the capacity set, resulting in optimum smooth and continuous discharge flow.

The mounting plate allows quick installation and service. The control cube can be turned easily into front, left or right position. The click wheel and the multi-coloured backlit graphical, plain-text LC display make commissioning and operation intuitive. The control elements are protected by a transparent cover.

The dosing head is composed of:

- Long lifetime and universal, chemically resistant full double PTFE diaphragm.
- Ball valves for highest dosing accuracy.
- Deaeration valve for easy startup.

Operating modes:

- Manual dosing in ml/h, l/h or gph.
- Pulse control in ml/pulse (incl. memory function).
- Analog control 0/4-20 mA (scalable).
- Pulse-based batch function in ml, l or gal.
- Timer-based batch function (Dosing timer, cycle or week).
- Fieldbus control (GENIbus prepared for Grundfos CIU fieldbus modules).

Other features:

- Auto deaeration during pump standby to avoid breakdowns due to air-locking.
- Two SlowMode steps (anti-cavitation), 50 % (maximum flow: 60 l/h) and 25 % (maximum flow)
- Service information display to show when service and which wear-part order number is required.
- Two-step key lock function to protect the pump against unauthorised access.
- Additional display function to provide further information, e.g. the actual mA input signal.
- Counter for total dosed volume (resettable), operating hours, etc.
- Save and load customised settings as well as reload of factory settings.

Signal inputs/outputs:

- Input for pulse, analog 0/4-20mA and external stop.
- Input for low-level and empty-tank signal.
- Two potential-free output relays for maximum 30 V AC/DC (configurable, e.g. alarm, stroke signal, pump dosing, timer etc.)
- Output analog 0/4-20mA.
- Fieldbus communication interface (GENIbus, for connection of the Grundfos CIU fieldbus converter).

Controls:

Control variant:

AR

Level control:

YES

Qty.	Description
	<p>Analog input: 0/4-20 MA Pulse control: YES Ext. Stop input: YES Analog output: 0/4-20 MA Output relays: 2 Bus communication: YES</p> <p>Liquid: Pumped liquid: Water Liquid temperature range: 0 .. 50 °C Selected liquid temperature: 20 °C Density: 998.2 kg/m³</p> <p>Technical: Type key: DDA 120-7 AR-PV/T/C-F-31U3U3IG Max. Flow: 120 l/h Max. flow in slow mode 50%: 60 l/h Max. flow in slow mode 25%: 30 l/h Min flow: 150 ml/h Turn-down ratio: 1:800 Approvals on nameplate: CE,CSA-US,NSF61,RCM Valve type: Standard Maximum viscosity at 100 %: 100 mPas Maximum viscosity in slow mode 50 %: 1500 mPas Maximum viscosity in slow mode 25 %: 3000 mPas Accuracy of repeatability: 1.5 %</p> <p>Materials: Dosing head: PVDF (Polyvinylidene fluoride) Valve ball: Ceramic Gasket: PTFE</p> <p>Installation: Range of ambient temperature: 0 .. 45 °C Maximum operating pressure: 7 bar Installation set: NO Installation type: No installation set Pump inlet: Conn.pack U3 (hose ID.19mm &.. Pump outlet: Conn.pack U3 (hose ID.19mm &.. Max. Suction lift during operation: 3 m Max. Suction lift during priming: 1.5 m</p> <p>Electrical data: Maximum power input - P1: 62 W Mains frequency: 50 / 60 Hz Rated voltage: 1 x 100-240 V Enclosure class (IEC 34-5): IP65 / NEMA 4X Length of cable: 1.5 m Type of cable plug: Australia, New Zealand, Taiwan Inrush current: 70A at 240V (35A/100V) for 2ms</p> <p>Others: Net weight: 7 kg Gross weight: 7 kg Color: RED Country of origin: FR Custom tariff no.: 8413509060</p>



Company name:

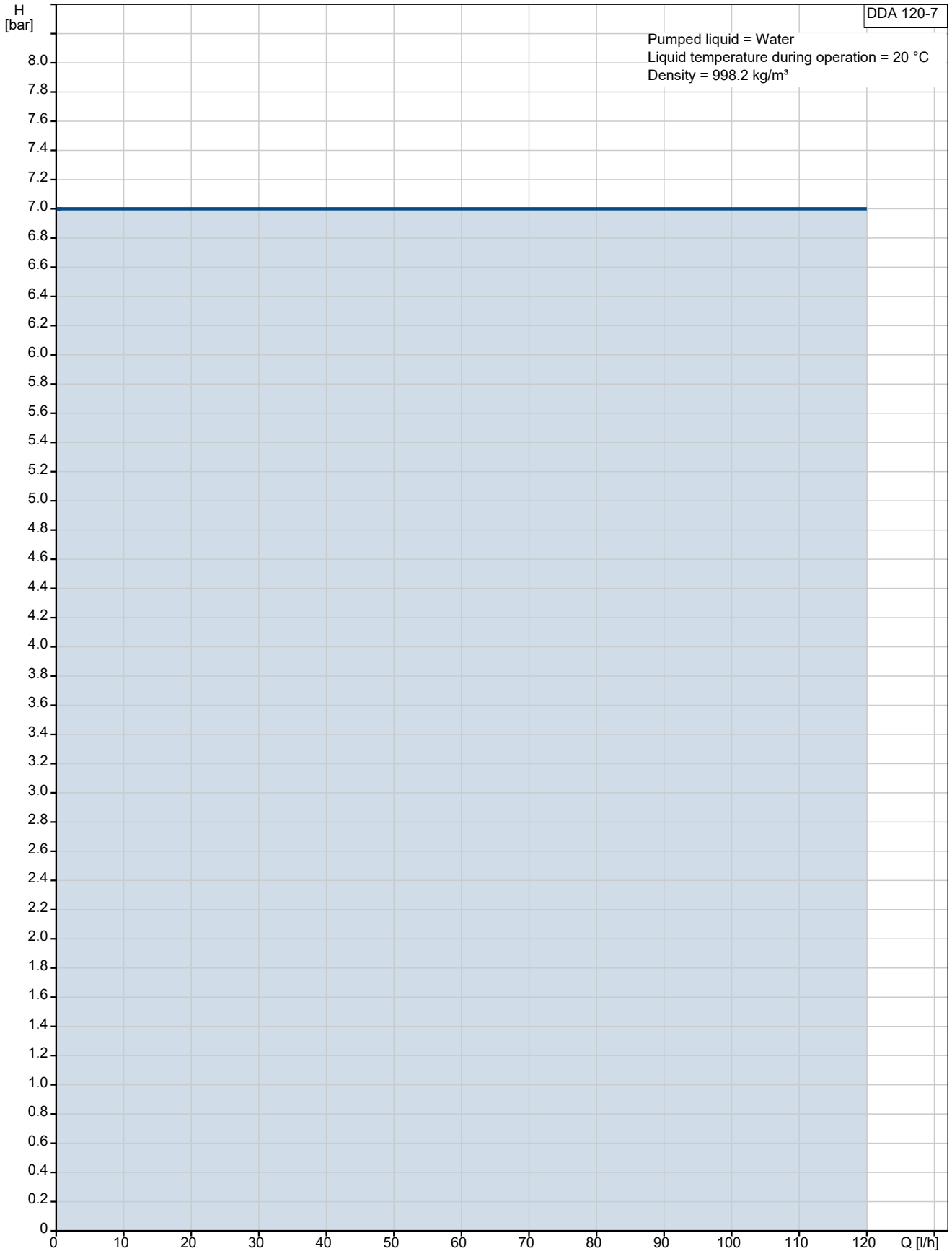
Created by:

Phone:

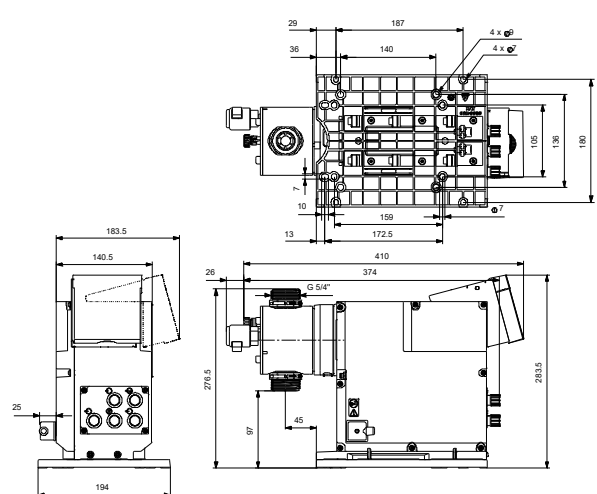
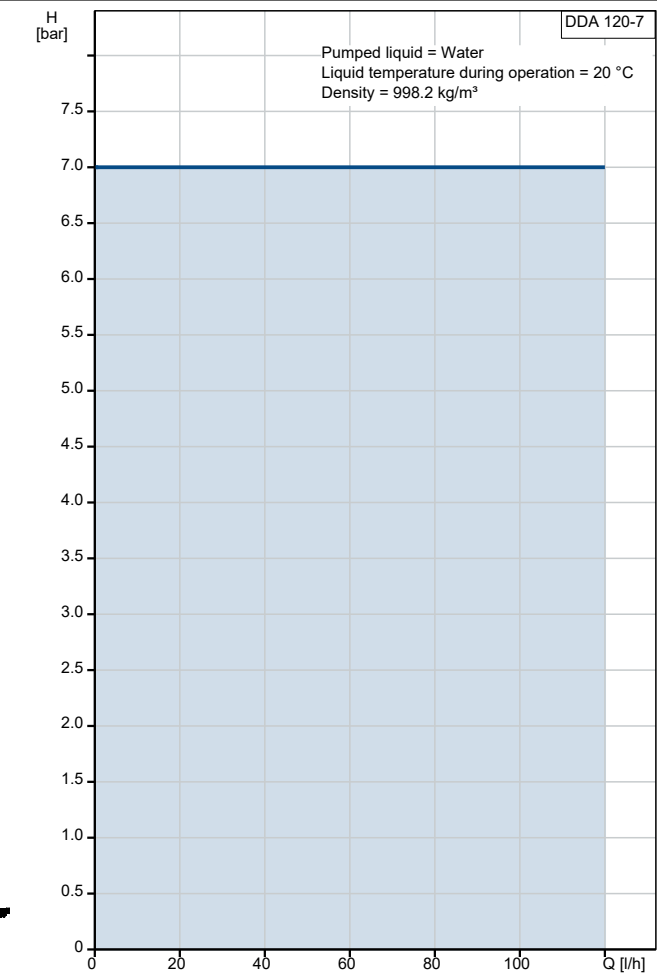
Date:

15/04/2021

99246423 DDA 120-7



Description	Value
General information:	
Product name:	DDA 120-7
Product No:	99246423
EAN number:	5712609451651
Price:	
Technical:	
Type key:	DDA 120-7 AR-PV/T/C-F-31U3U3IG
Max. Flow:	120 l/h
Max. flow in slow mode 50%:	60 l/h
Max. flow in slow mode 25%:	30 l/h
Min flow:	150 ml/h
Turn-down ratio:	1:800
Approvals on nameplate:	CE,CSA-US,NSF61,RCM
Valve type:	Standard
Maximum viscosity at 100 %:	100 mPas
Maximum viscosity in slow mode 50 %:	1500 mPas
Maximum viscosity in slow mode 25 %:	3000 mPas
Accuracy of repeatability:	1.5 %
Materials:	
Dosing head:	PVDF (Polyvinylidene fluoride)
Valve ball:	Ceramic
Gasket:	PTFE
Installation:	
Range of ambient temperature:	0 .. 45 °C
Maximum operating pressure:	7 bar
Installation set:	NO
Installation type:	No installation set
Pump inlet:	Conn.pack U3 (hose ID.19mm &..
Pump outlet:	Conn.pack U3 (hose ID.19mm &..
Max. Suction lift during operation:	3 m
Max. Suction lift during priming:	1.5 m
Liquid:	
Pumped liquid:	Water
Liquid temperature range:	0 .. 50 °C
Selected liquid temperature:	20 °C
Density:	998.2 kg/m ³
Electrical data:	
Maximum power input - P1:	62 W
Mains frequency:	50 / 60 Hz
Rated voltage:	1 x 100-240 V
Enclosure class (IEC 34-5):	IP65 / NEMA 4X
Length of cable:	1.5 m
Type of cable plug:	Australia, New Zealand, Taiwan
Inrush current:	70A at 240V (35A/100V) for 2ms
Controls:	
Control variant:	AR
Control panel:	FRONT-MOUNTED
Level control:	YES
Analog input:	0/4-20 MA
Pulse control:	YES
Ext. Stop input:	YES
Analog output:	0/4-20 MA





Company name:

Created by:

Phone:

Date:

15/04/2021

Description	Value
Output relays:	2
Bus communication:	YES
Others:	
Net weight:	7 kg
Gross weight:	7 kg
Color:	RED
Country of origin:	FR
Custom tariff no.:	8413509060