



5900 Schooner Street – Belleville, MI 48111 – USA

TEL (800) 422-2558 – FAX (734) 665-9099

Visit us at: www.Eberbachlabtools.com

E7200.00 High Speed *POWER STIR*[®]
VARIABLE SPEED 150-2500 rpm
115 V, 50/60 HZ

USE AND CARE FOR CATALOG NUMBER:

E7200.00 High Speed POWER STIR®

VARIABLE SPEED 150-2500 rpm, 115 V, 50/60 HZ

GENERAL INFORMATION

1. Handle this unit with care. Unpack and check that the contents coincide with the packing-list. If any part is damaged or missing, please advise the distributor immediately.
2. Do not install or use this equipment without first reading this manual.
3. This manual should always be attached to the equipment and made available to all users.
4. If you have any doubts or inquiries, please contact your supplier or ***Eberbach Corporation*** technical service.

PACKING LIST

The standard equipment consists of the following components:

Item	Cat No.	Qty.
High Speed <i>Power Stir</i> ®	E7200.00	1
Hex (Allen) Key 3/16"	5647	1
Instruction Manual		1

OPERATION

Clamp the stirrer upright to a support stand (up to .75" Diam) using the four arm knob. **Do not overtighten!** Set Screws and an allen key are provided as an option for permanent mounting. **Do not overtighten!**

Connect the power cord to a 115 V, 50/60 Hz outlet. Insert an agitator rod through both screw chucks and tighten by hand only, **do not use pliers.** If necessary loosen the chucks then rotate the rod slightly and retighten in order to minimize wobble.

This Power Stir is driven by a *Bodine* permanent magnet DC Motor and is rated for continuous duty under normal operation.

Operating speed can be adjusted with the motor speed control. Because the torque and speed of this motor vary automatically, the speed control will not regulate speed under varying load conditions. Readjust the speed as necessary when load conditions vary.

NEVER touch components that are moving!

Typical medium duty applications of this stirrer are:

- Mixing aqueous liquids.
- Mixing small amounts of viscous liquids.
- Tissue homogenization using small tissue grinders.
- Stirring during liquid reactions of varying viscosity.

MAINTENANCE

Motor:

In the case of a high duty cycle, brushes should be inspected and/or replaced at determined intervals (12-24 months). Brushes can be removed by carefully following the steps outlined below:

1. Unscrew the black plastic brush holders located on either side of the motor near the speed control housing. Be careful not to lose the internal spring when unscrewing the brush holder.
2. Replace if brushes are worn to less than 1/8".

OVERLOADING AND FUSE REPLACEMENT

The stirrer is rated for continuous duty and is intended to be utilized for mixing of aqueous solutions and tissue homogenizing (using medium diam pestle). The unit is equipped with a thermal circuit breaker in the event that the stirrer rod or pestle is stopped or overloaded. If the circuit breaker is triggered, remove any obstruction and wait for breaker to cool then proceed to reset.

Replacement fuse for the motor is a 2 Amp Slow Blow (Time Delay). Replace fuses only once. Preventative maintenance has set the fuse to blow if the motor is over worked.

NOTE: If fuse blows immediately after replacement, repairs may be needed.

If you have any doubts or inquiries concerning operation contact your supplier or **Eberbach Corporation** technical service @ **1-800-422-2558**.

CAT. NO. 7200 REPLACEMENT PARTS LIST

<u>PART NO.</u>	<u>DESCRIPTION</u>	<u>QTY.</u>
EP7085.300	Knurled Chuck (male)	2
EP7085.302	Hex Chuck (female)	2
EP7085.303	Hollow Drive Shaft	1
EP7085.305	Clamp Nut (3/8-16)	2
EP7085.309	Lower Body Housing	1
EP7085.310	Upper Body Housing	1
EP7085.311	DC motor control w/modified Bracket	1
EP7195.100	Spindle Pulley	1
4125	Bearing R8-zz 1/2 ID x 1-1/8 OD	2
4265	Belt 137 tooth 3mm pitch x 9mm Wide GT2	1
4499	Pulley 60t 3mm GT2 with .3125" Bore	1
4798	Knob 4-arm Comfort Grip 3/8-16 Stud	1
5331	Retaining Ring Zinc Plated	2
5647	Allen Wrench	1
6120.1	Circuit Breaker .5 Amp	1
6126.5	Fuse 2 Amp Time Delay (Slow Blow)	1
6532	Rocker Switch, Snap in	1
6924	Motor 1/17 HP Bodine # 0043	1
6933.5	Brush, Motor	2
6934.5	Spring (Brush, Motor)	2
8456	3/8-16 Set Screw	2

If you have any doubts or inquiries concerning the installation or ordering of replacement parts please contact your supplier or **Eberbach Corporation** Technical Service @ **1-800-422-2558**.

Eberbach
 Model 7200
 Variable Speed
 Overhead Stirrer

8593

EP7085.302

BREAKER
 (230V)

EP7085.300

4499

4265

EP7085.304

4125

5331

EP7085.303

EP7195.100

5331

4125

EP7085.304

EP7085.302

EP7085.300

6924

8289

MOTOR CORD

8592

BREAKER

EP7085.310

EP7085.25.310

EP7085.307

EP7085.305

4798

FUSE

POWER CORD

7950

EP7085.309

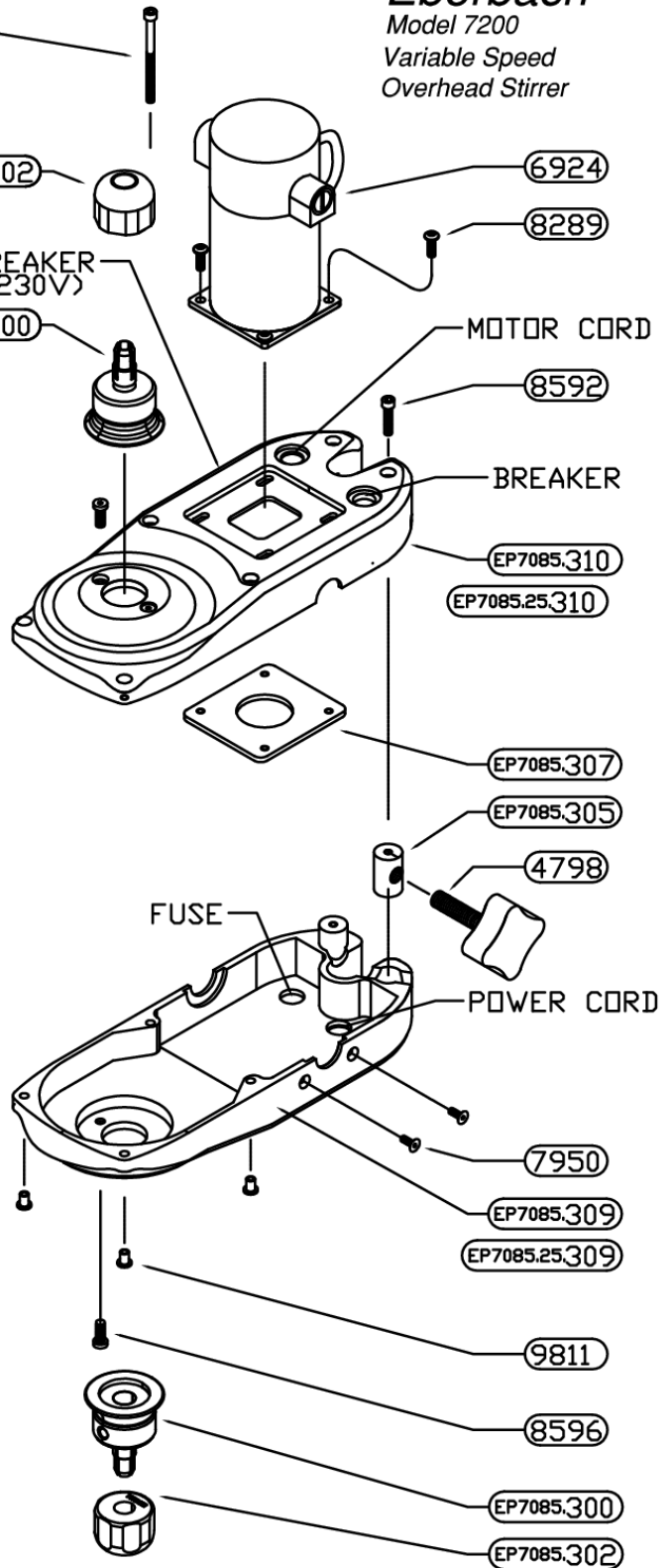
EP7085.25.309

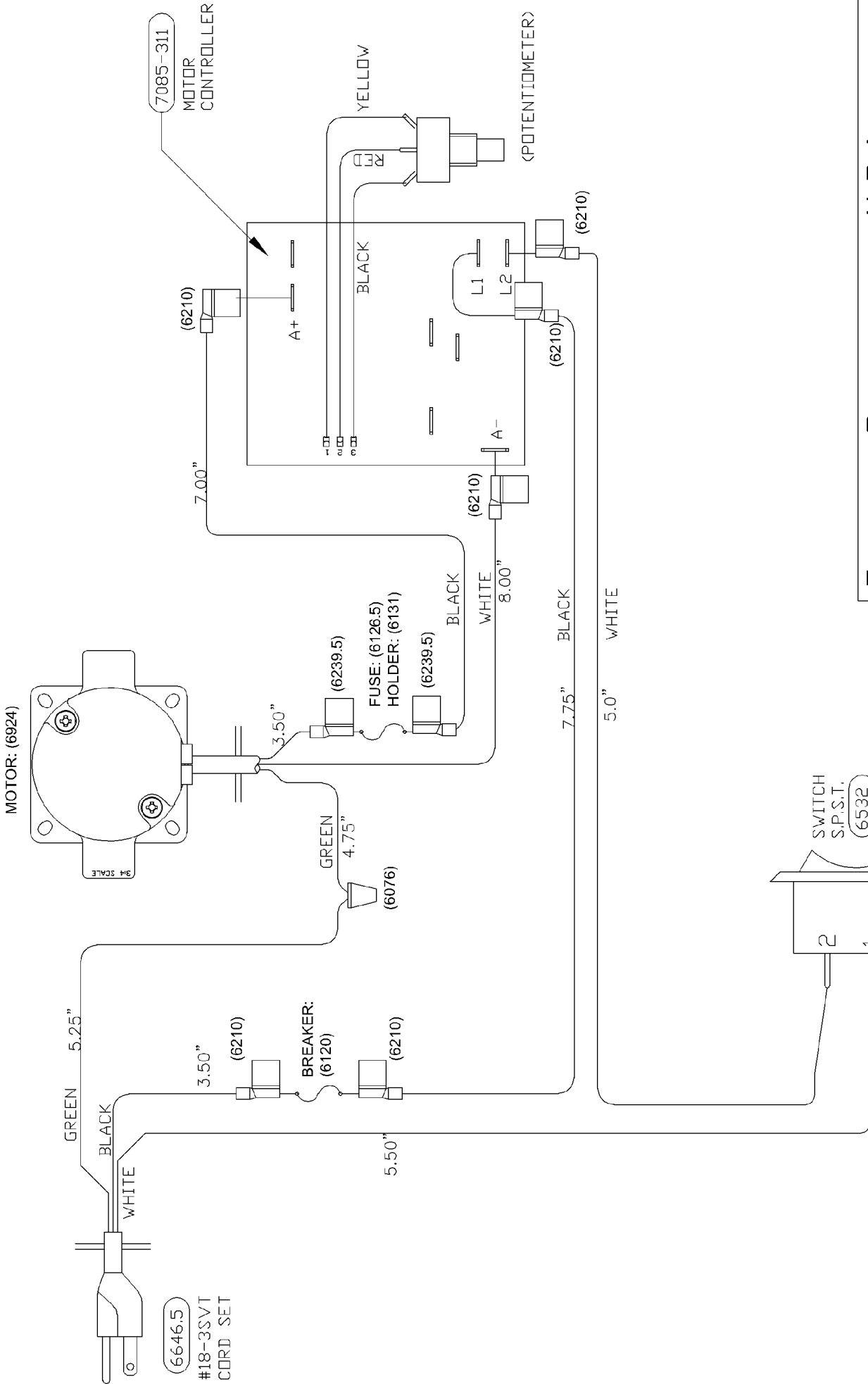
9811

8596

EP7085.300

EP7085.302





EBERBACH CORPORATION U.S.A.		ELECTRICAL DIAGRAM	
SPEED RANGE	ASSEMBLY	PART NAME	DATE
XXX - XXX			1/25/2021
50 W/HR (625)		SCALE N/A	DEPT.
100 W/HR (620)			FAB.
TOLEANCE UNLESS OTHERWISE STATED		REV D 1	ASM.
DECIMAL			
.X ± .1			
.XX ± .01			
			REV. 4
			125-202
			J.S.D.
			PART NO.
			E7200.605A

SOLDER TO SWITCH