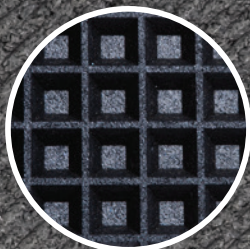


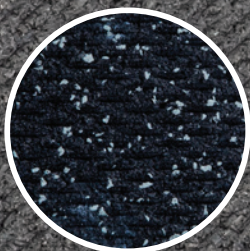
# GAMES SYSTEM

# STADIUM INDOOR/OUTDOOR

- Modular Loose Lay Interlocking System
- Impact Zones Provide Superior Impact and Noise Mitigation
- Enhanced Traction In Wet Environments
- Anti-Fungal/Anti-Microbial Closed Cell Material
- Durable Re-Vulcanized Rubber



Waffle Bottom Design  
Impact Zones for  
Shock & Noise  
Mitigation



Diamond Top Design  
Enhanced Traction  
Available in Black & 30% Grey

3/4" (18mm)



2'x2'  
Beveled  
Corner

2'x2'  
Beveled  
Edge

4'x6'  
CENTER  
Available With  
& Without Edges

The **GAMES SYSTEM** - Designed to withstand and to perform at the highest levels. The **GAMES SYSTEM** has been engineered to create the best surface for dynamic lifting and performance environments. Offered in two designs, Stadium and Arena, The **GAMES SYSTEM** has been developed with our motto at its core, "Performance, built from the ground up".

Offering the highest level of performance from the **Shok Lok** system of impact mitigation which utilizes Impact Zones within its base to dramatically reduce noise, vibration, and impact. The Force Reduction and Energy Restitution qualities have been engineered to offer the most comfort while enabling the highest levels of performance for the users.

We also offer both versions in our patented **MASS\*** system of interlock and include three interlocked edge pieces with every core mat. This allows for our core center mats that measure 66" X 44" to work with the included edges or with our beveled and straight edge trim pieces that measure 22" X 22". This system allows versatility and ease of installation.

The Stadium enhanced traction surface offers a higher level of traction when wet and is perfect for outdoor events while our Arena smooth top surface is perfect for facilities and indoor use where regular cleaning and safety protocols are required.

**SURFACECo**  
**SPORT**

SurfaceCo SPORT  
1350 Venture Drive, Janesville, Wisconsin 53546  
Phone: 608.314.9294 • 800.314.9304  
[www.surfaceco.com](http://www.surfaceco.com)

The **GAMES SYSTEM Stadium Series** is made specifically for high intensity workouts that demand superior impact and noise mitigation. Coupled with enhanced traction in wet environments, the system is the perfect solution for indoor and outdoor environments.



HEAVY DUTY



HIGH  
TENSILE



INTERLOCKING  
PRODUCT



CLOSED  
CELL



ANTI  
MICROBIAL



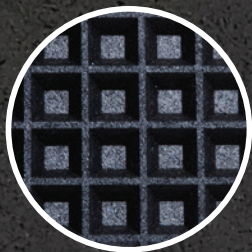
MADE IN  
THE USA



# GAMES SYSTEM

# ARENA INDOOR SURFACE

- Modular Loose Lay Interlocking System
- Impact Zones Provide Superior Impact and Noise Mitigation
- Smooth Easy Clean Top
- Anti-Fungal/Anti-Microbial Closed Cell Material
- Durable Re-Vulcanized Rubber



**Waffle Bottom Design**  
Impact Zones for  
Shock & Noise  
Mitigation



**Smooth Surface for**  
Easy Cleaning &  
Disinfecting

Available in Black & 30% Grey



**3/4" (18mm)**

**2'x2'**  
Beveled  
Corner

**2'x2'**  
Beveled  
Edge

**4'x6'**  
CENTER  
Available With  
& Without Edges

The **GAMES SYSTEM** - Designed to withstand and to perform at the highest levels. The **GAMES SYSTEM** has been engineered to create the best surface for dynamic lifting and performance environments. Offered in two designs, Stadium and Arena, The **GAMES SYSTEM** has been developed with our motto at its core, "Performance, built from the ground up".

Offering the highest level of performance from the **Shok Lok** system of impact mitigation which utilizes Impact Zones within its base to dramatically reduce noise, vibration, and impact. The Force Reduction and Energy Restitution qualities have been engineered to offer the most comfort while enabling the highest levels of performance for the users.

We also offer both versions in our patented **MASS\*** system of interlock and include three interlocked edge pieces with every core mat. This allows for our core center mats that measure 66" X 44" to work with the included edges or with our beveled and straight edge trim pieces that measure 22" X 22". This system allows versatility and ease of installation.

The Stadium enhanced traction surface offers a higher level of traction when wet and is perfect for outdoor events while our Arena smooth top surface is perfect for facilities and indoor use where regular cleaning and safety protocols are required.

**SURFACECo**  
**SPORT**

SurfaceCo SPORT  
1350 Venture Drive, Janesville, Wisconsin 53546  
Phone: 608.314.9294 • 800.314.9304  
[www.surfaceco.com](http://www.surfaceco.com)

The **GAMES SYSTEM Stadium Series** is made specifically for high intensity workouts that demand superior impact and noise mitigation. Coupled with an easy to clean and disinfect surface, the system is the perfect solution for indoor facilities.



HEAVY DUTY



HIGH  
TENSILE



INTERLOCKING  
PRODUCT



CLOSED  
CELL



ANTI  
MICROBIAL



MADE IN  
THE USA