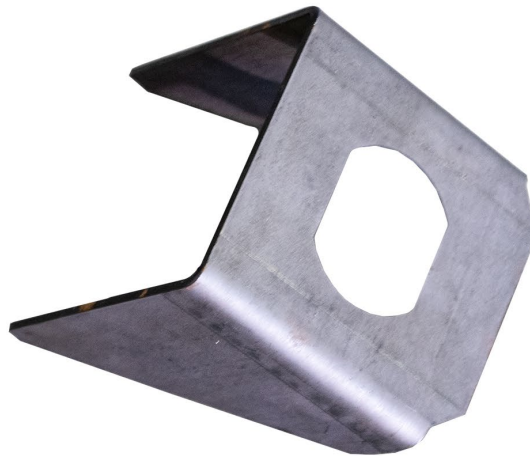




**RUST
BUSTER**
FRAMEWORKS

RB7508
04-12 Chevy/GMC Colorado/ Canyon
Center Cab Mount



REQUIRED TOOLS

Jack Stands or Lift
Mig Welder
Paint/Primer
Locking Pliers
Hand Grinder
Cutting Wheel or Torch
Welding Gloves
Welding Hood/Shield
Ear & Eye Protection
Sockets & Ratchet
Fire Extinguisher

KIT CONTAINS

Center cab Mount

QTY

1



**RUST
BUSTER**
F R A M E W O R K S

RB7508

**04-12 Chevy/GMC Colorado/ Canyon
Center Cab Mount**

1) PREPARING YOUR VEHICLE

Begin by disconnecting your battery prior to starting your installation.

Inspect your vehicle for leaking fuel lines, fuel tank and engine components. If you have fuel leaks repair all leaks prior to starting your installation. If your fuel tank is near your welding area **remove your tank prior to welding.**

Remove all combustible items above the work area such as seats, carpets, padding, etc.

Keep all flammable materials away from the vehicle work area.

2) PREPARING YOUR WORKSTATION

Keep a fire extinguisher close by in the case of fire and make sure you always have a designated "Fire Watch" to assist during the cutting or welding phases.

Abide by all apprenticed welding safety standards and practices.

Always use appropriate welding eye protection, ear protection, and work and fire safety gloves during the installation and within the work area.



WARNING!

If you are unsure on how to perform the installation or how to operate any of the required tools listed above, it is **HIGHLY** advised that you enlist the work of a certified welder/installer.

Failure to follow proper safety precautions and instructions may result in serious injury. **The user assumes all liability when installing the product.**



RUST BUSTER

F R A M E W O R K S

RB7508

04-12 Chevy/GMC Colorado/ Canyon Center Cab Mount

3) PREPARING FOR YOUR INSTALL

Remove the cab bolt and bushing from the mount. You may need to remove all the cab bolts on the side you're working on and jack the body up slightly to access the bushings.

Mark the location of the existing mount for installation reference.

4) CUT

Begin cutting the mount off followed by grinding down the zones free of rust and debris, revealing bare metal.



Paint the part and work area with a weldable primer to help prevent against rust.

5) WELD

Remove any potential fire hazards from the work area. Tac weld the part to the frame. Following proper welding procedures, begin welding the part.

100% weld around all edges.

6) PAINT AND PROTECT

If you chose not to protect your part in (Step 4), coat the part and work area with a primer or other rust inhibitor to help prevent or reduce the risk of rust formation.

Reinstall your bolts and bushings.

