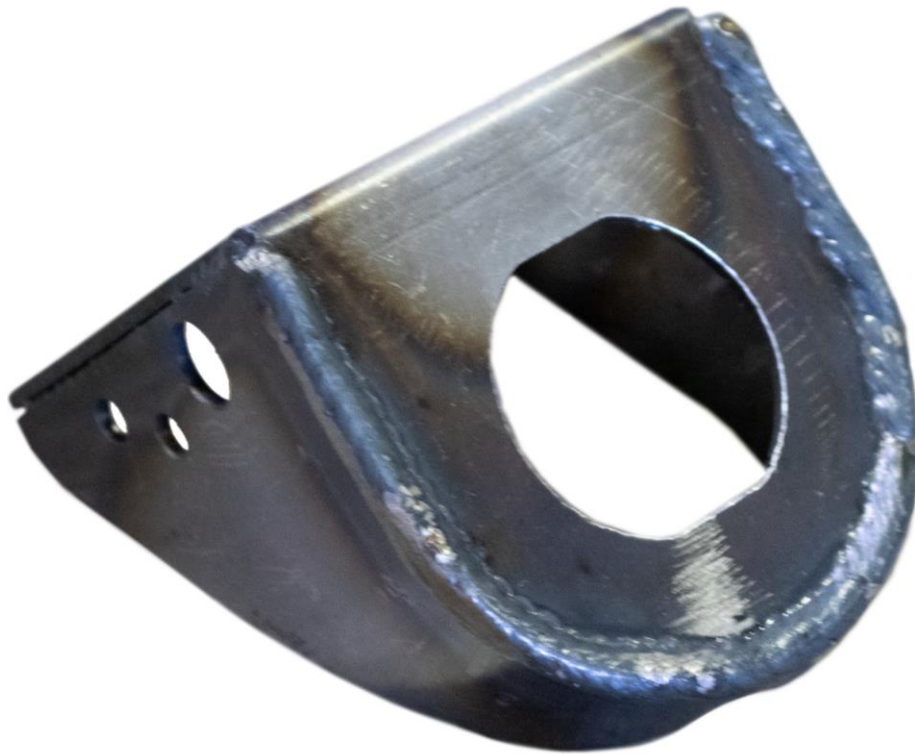




RUST BUSTER

RB7418
Center Body Mount

2002-2013 Chevy Avalanche 1500, 2000-2014 Chevy
Suburban, 2000-2014 GMC Yukon XL, 2003-2013
Escalade EXT, 2003-2014 Escalade ESV



VIDEO AVAILABLE

REQUIRED TOOLS

Jack Stands or Lift
Mig Welder
Paint/Primer
Hand Grinder
Cutting Wheel or Torch
Welding Gloves
Welding Hood/Shield
Ear & Eye Protection
Sockets & Ratchet
Fire Extinguisher

KIT CONTAINS

Center Body Mount

QTY

1



RUST BUSTER

RB7418
Center Body Mount

**2002-2013 Chevy Avalanche 1500, 2000-2014 Chevy
Suburban, 2000-2014 GMC Yukon XL, 2003-2013
Escalade EXT, 2003-2014 Escalade ESV**

1) PREPARING YOUR VEHICLE

Begin by disconnecting your battery prior to starting your installation.

Inspect your vehicle for leaking fuel lines, fuel tank and engine components. If you have fuel leaks repair all leaks prior to starting your installation. If your fuel tank is near your welding area **remove your tank prior to welding.**

Remove all combustible items above the work area such as seats, carpets, padding, etc.

Keep all flammable materials away from the vehicle work area.

2) PREPARING YOUR WORKSTATION

Keep a fire extinguisher close by in the case of fire and make sure you always have a designated "Fire Watch" to assist during the cutting or welding phases.

Abide by all apprenticed welding safety standards and practices.

Always use appropriate welding eye protection, ear protection, and work and fire safety gloves during the installation and within the work area.



WARNING!

If you are unsure on how to perform the installation or how to operate any of the required tools listed above, it is **HIGHLY** advised that you enlist the work of a certified welder/installer.

Failure to follow proper safety precautions and instructions may result in serious injury. **The user assumes all liability when installing the product.**



RUST BUSTER

RB7418
Center Body Mount

2002-2013 Chevy Avalanche 1500, 2000-2014 Chevy Suburban, 2000-2014 GMC Yukon XL, 2003-2013 Escalade EXT, 2003-2014 Escalade ESV

3) **PREPARING FOR YOUR INSTALL**

Lift up your vehicle. (Optional)



Using an 18mm socket, remove the body mount bolt and bushing.

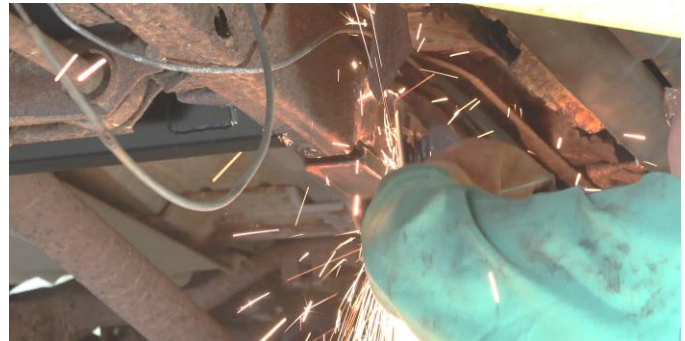


CUT

Cut off the factory center body mount.



Grind down the frame free of rust and debris, revealing bare metal.



Spray the work area with a weldable primer to help prevent against rust development.





RUST BUSTER

RB7418 Center Body Mount

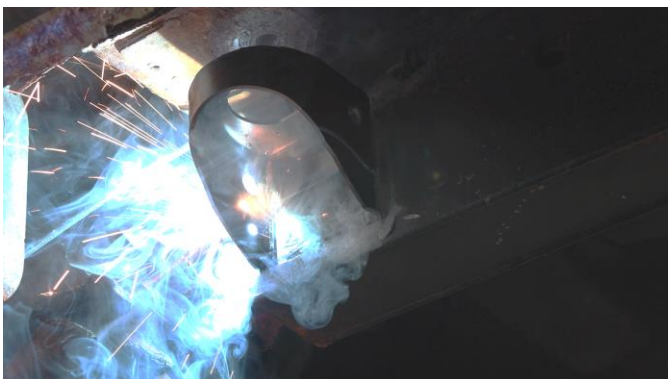
2002-2013 Chevy Avalanche 1500, 2000-2014 Chevy Suburban, 2000-2014 GMC Yukon XL, 2003-2013 Escalade EXT, 2003-2014 Escalade ESV

4) WELD

Hold up your body mount up to the frame and line it up where the original body mount was located.



Remove any potential fire hazards from the work area. Following proper welding procedures, tack weld the part onto the frame before welding it on fully. Weld 100% around all edges.



5) PAINT AND PROTECT

Coat the part and work area with a primer or other rust inhibitor to help prevent or reduce the risk of rust formation.



6) REINSTALL

With an 18mm socket, reinstall your body mount bolt and bushing.

