



RUST BUSTER

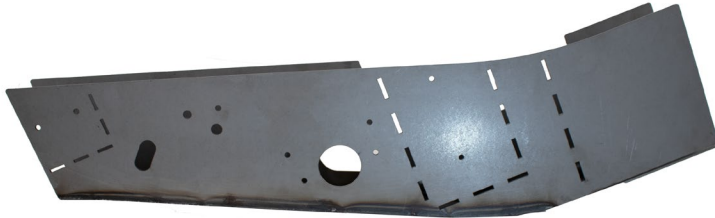
FRAMEWORKS

RB7336/RB7337/RB7345/RB7346

07-13 Chevy/GMC Silverado/ Sierra Ext Cab
Mid-Frame Section & Mounts



RB7336L & RB7336R



RB7337



RB7345L & RB7345R

RB7346



REQUIRED TOOLS

- Jack Stands or Lift
- Mig Welder
- Paint/Primer
- Locking Pliers
- Hand Grinder
- Cutting Wheel or Torch
- Welding Gloves
- Welding Hood/Shield
- Ear & Eye Protection
- Sockets & Ratchet
- Fire Extinguisher

KIT CONTAINS

- RB7336**
Mid-Frame Section
- RB7337**
Rear Leaf Spring Mount
M16 Hex Bolt
M16 Washer
M16 Nyloc Flange Nut
- RB7345**
Forward Bed Mount
- RB7346**
Center Bed Mount

QTY

- 1
- 1
- 1
- 1
- 1
- 1



RUST BUSTER

F R A M E W O R K S

RB7336/RB7337/RB7345/RB7346

07-13 Chevy/GMC Silverado/ Sierra Ext Cab
Mid-Frame Section & Mounts

1) PREPARING YOUR VEHICLE

Begin by disconnecting your battery prior to starting your installation.

Inspect your vehicle for leaking fuel lines, fuel tank and engine components. If you have fuel leaks repair all leaks prior to starting your installation. If your fuel tank is near your welding area **remove your tank prior to welding.**

Remove all combustible items above the work area such as seats, carpets, padding, etc.

Keep all flammable materials away from the vehicle work area.

2) PREPARING YOUR WORKSTATION

Keep a fire extinguisher close by in the case of fire and make sure you always have a designated "Fire Watch" to assist during the cutting or welding phases.

Abide by all apprenticed welding safety standards and practices.

Always use appropriate welding eye protection, ear protection, and work and fire safety gloves during the installation and within the work area.



WARNING!

If you are unsure on how to perform the installation or how to operate any of the required tools listed above, it is **HIGHLY** advised that you enlist the work of a certified welder/installer.

Failure to follow proper safety precautions and instructions may result in serious injury. **The user assumes all liability when installing the product.**



RUST BUSTER

FRAMEWORKS

RB7336/RB7337/RB7345/RB7346

07-13 Chevy/GMC Silverado/ Sierra Ext Cab
Mid-Frame Section & Mounts

3) PREPARING FOR YOUR INSTALL

Remove your vehicle's bed and wheel.



Jack up the rear axle and support the frame with jack stands.



With a 24mm socket, remove the bolt securing the forward leaf spring, and push it out of the pocket.



With a 21mm socket, remove the upper bolt from the front and rear shock to allow the leaf springs to swing out of the way.





RUST BUSTER

FRAMEWORKS

RB7336/RB7337/RB7345/RB7346
07-13 Chevy/GMC Silverado/ Sierra Ext Cab
Mid-Frame Section & Mounts

Hold the part up to the frame and mark off its coverage and your cut lines.



Decide whether you are keeping the three mounts in the area. If you intend on retaining them, you will need to modify our part. The section comes with perforated plates positioned where the brackets are installed. You will need to cut along these lines to remove the respective plate as desired.



4) CUT

Begin cutting the frame along your cut lines.





RUST BUSTER

FRAMEWORKS

RB7336/RB7337/RB7345/RB7346
07-13 Chevy/GMC Silverado/ Sierra Ext Cab
Mid-Frame Section & Mounts

Clean and grind the work area free of rust and debris, revealing bare metal.



Paint the part and work area with a weldable primer to help prevent against rust.



Push the part onto the frame while using the frame holes for alignment.



Put the remaining plates on outside of the rails on each side of the vehicle, and C-Clamp them into place.

5) WELD

Remove any potential fire hazards from the work area. Tac weld the part to the frame. Following proper welding procedures, begin welding the part. 100% weld around all edges.



If you've purchased **RB7337**, **RB7345**, and **RB7346** (Bed mounts & Leaf Spring Mount), weld them to the section at this time. Each mount features **small holes** that are designed to assist in alignment. Line up these holes with the same holes in the Mid-Frame Section. Once aligned, C-clamp the part to the frame. 100% weld the part along all edges.

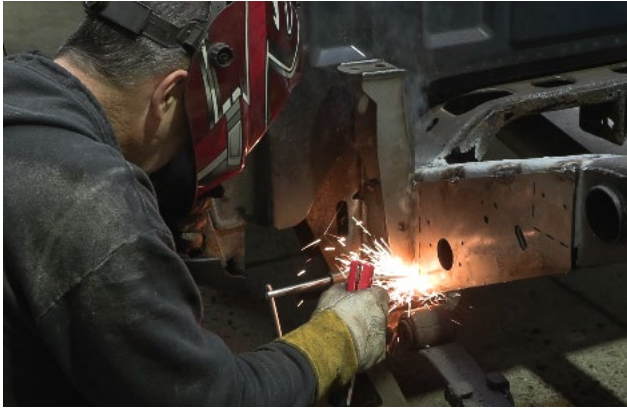




RUST BUSTER

F R A M E W O R K S

RB7336/RB7337/RB7345/RB7346
07-13 Chevy/GMC Silverado/ Sierra Ext Cab
Mid-Frame Section & Mounts



6) PAINT AND PROTECT

If you chose not to protect your part in (Step 4), coat the part and work area with a primer or other rust inhibitor to help prevent or reduce the risk of rust formation.

Reinstall your leaf spring.

