



RUST BUSTER

F R A M E W O R K S

RB7308

**Chevy/GMC® 88-98 K1500/2500
Core Support Mounts**



VIDEO AVAILABLE



REQUIRED TOOLS

Jack Stands or Lift
Mig Welder
Paint/Primer
Locking Pliers
Hand Grinder
Cutting Wheel or Torch
Welding Gloves
Welding Hood/Shield
Ear & Eye Protection
Sockets & Ratchet
Fire Extinguisher & Water

KIT CONTAINS

Core Support

QTY

2

BUSHINGS NOT INCLUDED



**RUST
BUSTER**
F R A M E W O R K S

RB7308

**Chevy/GMC® 88-98 K1500/2500
Core Support Mounts**

1) PREPARING YOUR VEHICLE

Begin by disconnecting your battery prior to starting your installation.

Inspect your vehicle for leaking fuel lines, fuel tank and engine components. If you have fuel leaks repair all leaks prior to starting your installation. If your fuel tank is near your welding area **remove your tank prior to welding.**

Remove all combustible items above the work area such as seats, carpets, padding, etc.

Keep all flammable materials away from the vehicle work area.

2) PREPARING YOUR WORKSTATION

Keep a fire extinguisher and water close by in the case of fire and make sure you always have a designated "Fire Watch" to assist during the cutting or welding phases.

Abide by all apprenticed welding safety standards and practices.

Always use appropriate welding eye protection, ear protection, and work and fire safety gloves during the installation and within the work area.



WARNING!

If you are unsure on how to perform the installation or how to operate any of the required tools listed above, it is **HIGHLY** advised that you enlist the work of a certified welder/installer.

Failure to follow proper safety precautions and instructions may result in serious injury. **The user assumes all liability when installing the product.**



**RUST
BUSTER**
FRAMEWORKS

RB7308

**Chevy/GMC® 88-98 K1500/2500
Core Support Mounts**

3) PREPARING FOR YOUR INSTALL

Headlights

Begin removing your lower headlight. With a screwdriver, remove the 4 screws from both lights and pull the unit out.



Remove the headlights and turn signal by pinch their plastic clips and rotating them out.



Grill

Start removing the grill. With a 7mm socket, remove the 10 grill hex bolts: 4 on top



1 below the hood latch



2 in each headlight cavity





RUST BUSTER

FRAMEWORKS

RB7308

Chevy/GMC® 88-98 K1500/2500 Core Support Mounts

And 1 at the center of the base

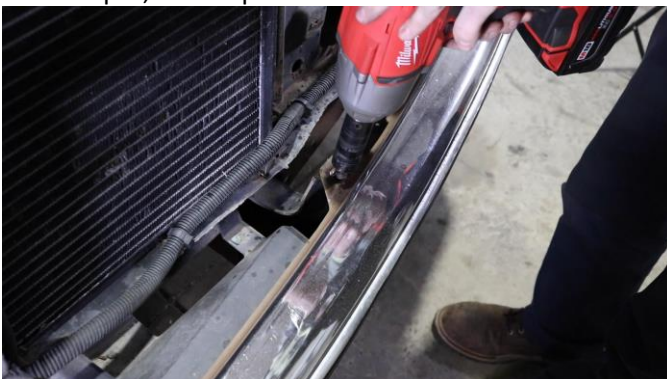


Bumper

Begin removing the bumper. Remove the plastic bumper cover.



With an 18mm socket, remove the 8 bolts retaining the bumper, 4 on top and 4 on the bottom.



Core Support Mounts/Bumper Brackets

Begin disassembling the bumper brackets and support mounts. With 2 18mm sockets, remove the bushing bolt from the mount.



With an 18mm socket, remove the 5 bolts from inside the supports, and remove the bumper brackets.





RUST BUSTER

F R A M E W O R K S

RB7308

Chevy/GMC® 88-98 K1500/2500 Core Support Mounts

With a 15mm socket, remove all body mount bolts from the vehicle.

Cut

With a jack or lift, raise the body off the frame and remove the core support mount bushings.



Begin cutting the mount from the frame. Clean the area of rust and debris, revealing bare metal.



Coat the part and work area in a weldable primer to help prevent the creation of rust.

Place the part up to the frame and loosely secure it with the 3 inner bolts and the corresponding bumper bracket. This will help align the part and reduce weld spacing. Ensure the top of the mount is parallel with the top of the frame before continuing.





RUST BUSTER

F R A M E W O R K S

RB7308

**Chevy/GMC® 88-98 K1500/2500
Core Support Mounts**

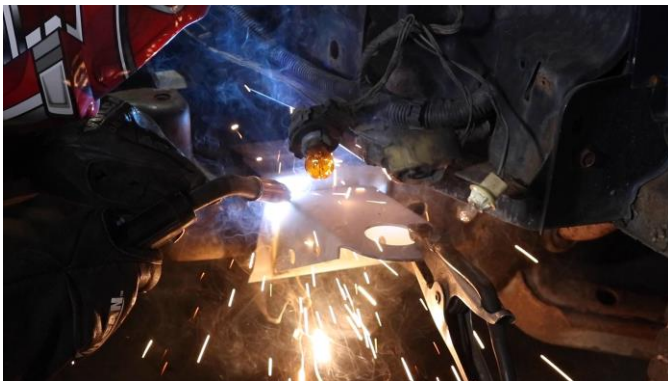
4) WELD

Tac weld the part to the frame, followed by removing the bolts and bumper bracket.

Remove any remaining potential fire hazards on both the vehicle and surrounding area.

Tighten the inner bolts and, while following proper welding procedures, begin welding the part.

100% weld around all edges.



5) PAINT AND PROTECT

If you chose not to protect your part in (Step 3), coat the part and work area with a primer or other rust inhibitor to help prevent or reduce the risk of rust formation.

6) INSTALL/REINSTALL THE BUSHINGS

Lower the vehicle back down.

7) INSTALL/REINSTALL BUSHING BOLTS AND BUMPER BRACKETS

8) INSTALL/REINSTALL YOUR BUMPER

9) INSTALL/REINSTALL YOUR GRILL

10) INSTALL REINSTALL YOUR LIGHTS