



**RUST  
BUSTER**  
F R A M E W O R K S

**RB7109R**

**Toyota® 95-04 Tacoma  
Passenger Side Rear Shock Mount**



**REQUIRED TOOLS**

Jack Stands or Lift  
Mig Welder  
Paint/Primer  
Locking Pliers  
Hand Grinder  
Cutting Wheel or Torch  
Welding Gloves  
Welding Hood/Shield  
Ear & Eye Protection  
Sockets & Ratchet  
Fire Extinguisher & Water

**KIT CONTAINS**

Passenger Side Rear Shock Mount  
Shock Mount Stud  
Spacer  
½" Washer  
½" Nyloc Nut  
7/16" Nyloc Nut  
2" Washer

**QTY**

1  
1  
1  
1  
1  
1  
1

**BUSHINGS NOT INCLUDED**



**RUST  
BUSTER**  
F R A M E W O R K S

**RB7109R**

**Toyota® 95-04 Tacoma  
Passenger Side Rear Shock Mount**

**1) PREPARING YOUR VEHICLE**

Begin by disconnecting your battery prior to starting your installation.

Inspect your vehicle for leaking fuel lines, fuel tank and engine components. If you have fuel leaks repair all leaks prior to starting your installation. If your fuel tank is near your welding area **remove your tank prior to welding.**

Remove all combustible items above the work area such as seats, carpets, padding, etc.

**Keep all flammable materials away from the vehicle work area.**

**2) PREPARING YOUR WORKSTATION**

Keep a fire extinguisher and water close by in the case of fire and make sure you always have a designated "Fire Watch" to assist during the cutting or welding phases.

Abide by all apprenticed welding safety standards and practices.

Always use appropriate welding eye protection, ear protection, and work and fire safety gloves during the installation and within the work area.



**WARNING!**

If you are unsure on how to perform the installation or how to operate any of the required tools listed above, it is **HIGHLY** advised that you enlist the work of a certified welder/installer.

Failure to follow proper safety precautions and instructions may result in serious injury. **The user assumes all liability when installing the product.**



# RUST BUSTER

F R A M E W O R K S

**RB7109R**

## Toyota® 95-04 Tacoma Passenger Side Rear Shock Mount

### 3) PREPARING FOR YOUR INSTALL

Lift or Jack your vehicle, and support it with jack stands.



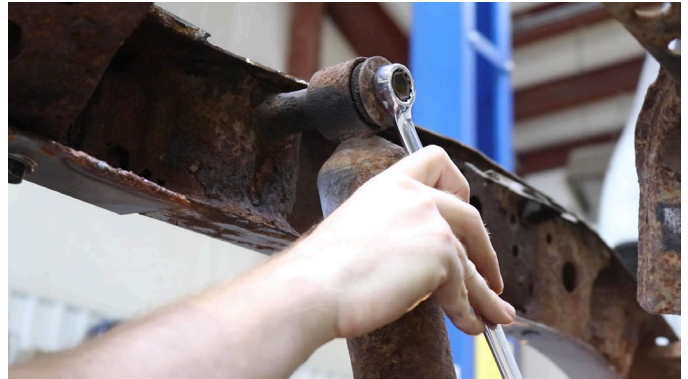
**LIFT IS NOT REQUIRED, BUT RECOMMENDED**

Remove your vehicle's hitch, rear bumper, and bed. For a tutorial on how to do this, please visit [www.youtube.com/rust\\_buster\\_frameworks](http://www.youtube.com/rust_buster_frameworks) for a step-by-step guide and walkthrough.



Remove your vehicle's wheels on the side you're working on.

With a 17mm socket, remove the bolt from your shock, and pull the shock off the stud.



(OPTIONAL): Coat the part with a weld-able primer or other rust inhibitor prior to installation to help prevent or reduce the risk of rust formation.

Note: If you purchase our Over-Axle Frame Section (**RB7108R**), you will need to install it first, prior to installing the shock mount.





# RUST BUSTER

FRAMEWORKS

RB7109R

## Toyota® 95-04 Tacoma Passenger Side Rear Shock Mount

### 4) CUT

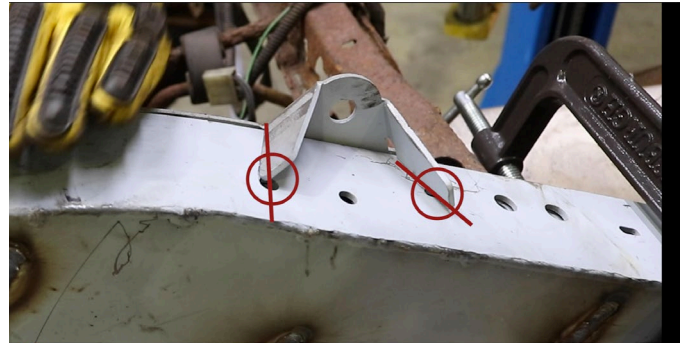
Begin cutting away the bracket and stud while trying to avoid damage to the frame rail.



Begin cleaning the frame of any rust and debris, revealing bare metal.



Place the mount into the channel so that both its angle and the show flanges are aligned. The flanges will bisect the shown holes, just before the Gas Tank Crossmember.



Coat the part and area with a weld-able primer prior

### 5) WELD

Remove any remaining potential fire hazards on both the vehicle and surrounding area.

Use a jack stand or C-clamps to hold the part into place and, while following proper welding procedures, begin welding the part.



Coat the part and area with a weld-able primer prior

100% weld around all edges.

### 6) PAINT AND PROTECT

If you chose not to protect your part in (Step 3), coat the part and work area with a primer or other rust inhibitor to help prevent or reduce the risk of rust formation.



**RUST  
BUSTER**  
F R A M E W O R K S

**RB7109R**

**Toyota® 95-04 Tacoma  
Passenger Side Rear Shock Mount**

**7) REASSEMBLE YOUR VEHICLE**

Install the supplied Shock Stud with a 19mm socket and pliers.



[Some bushing may be too small for the sleeve/spacer we included. You may install the bushing without it, if you wish]

Reassemble the rest of your vehicle.



Reinstall your bushing and shock.

