



Kia Stinger BIG MOUTH Ram Air Intake Installation Guide



Bumper Removal

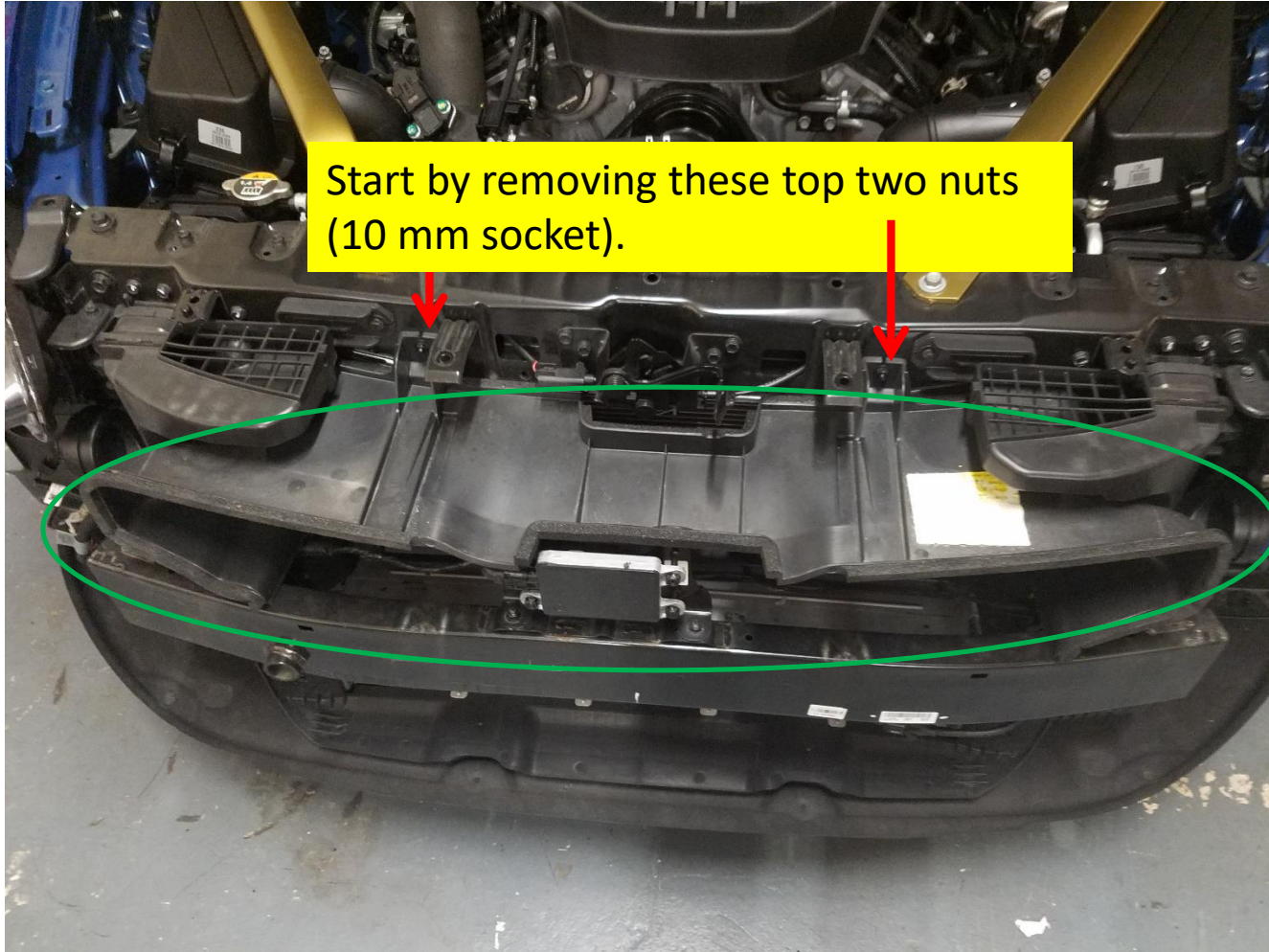
Your best resource for bumper removal is Youtube or by viewing this thread.

<https://stingerforum.org/threads/has-anyone-pulled-their-front-bumper.4330/>

Once you remove the bumper, please continue with this installation guide

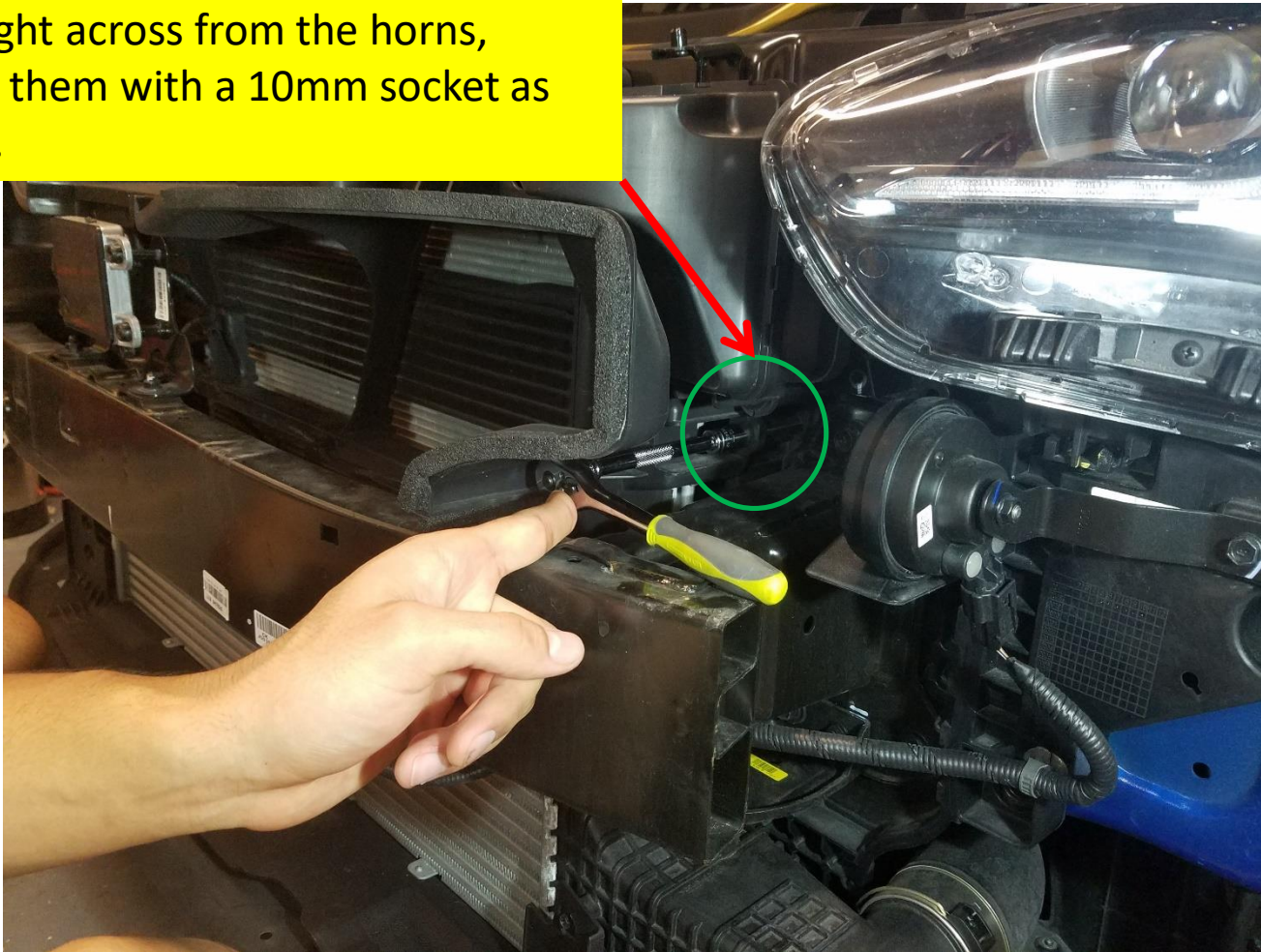
Shroud Removal

You will need to remove the shroud prior to installation.
There are 6 screws that need to be extracted.



Shroud Removal

There are two more screws on either side, right across from the horns, extract them with a 10mm socket as shown.



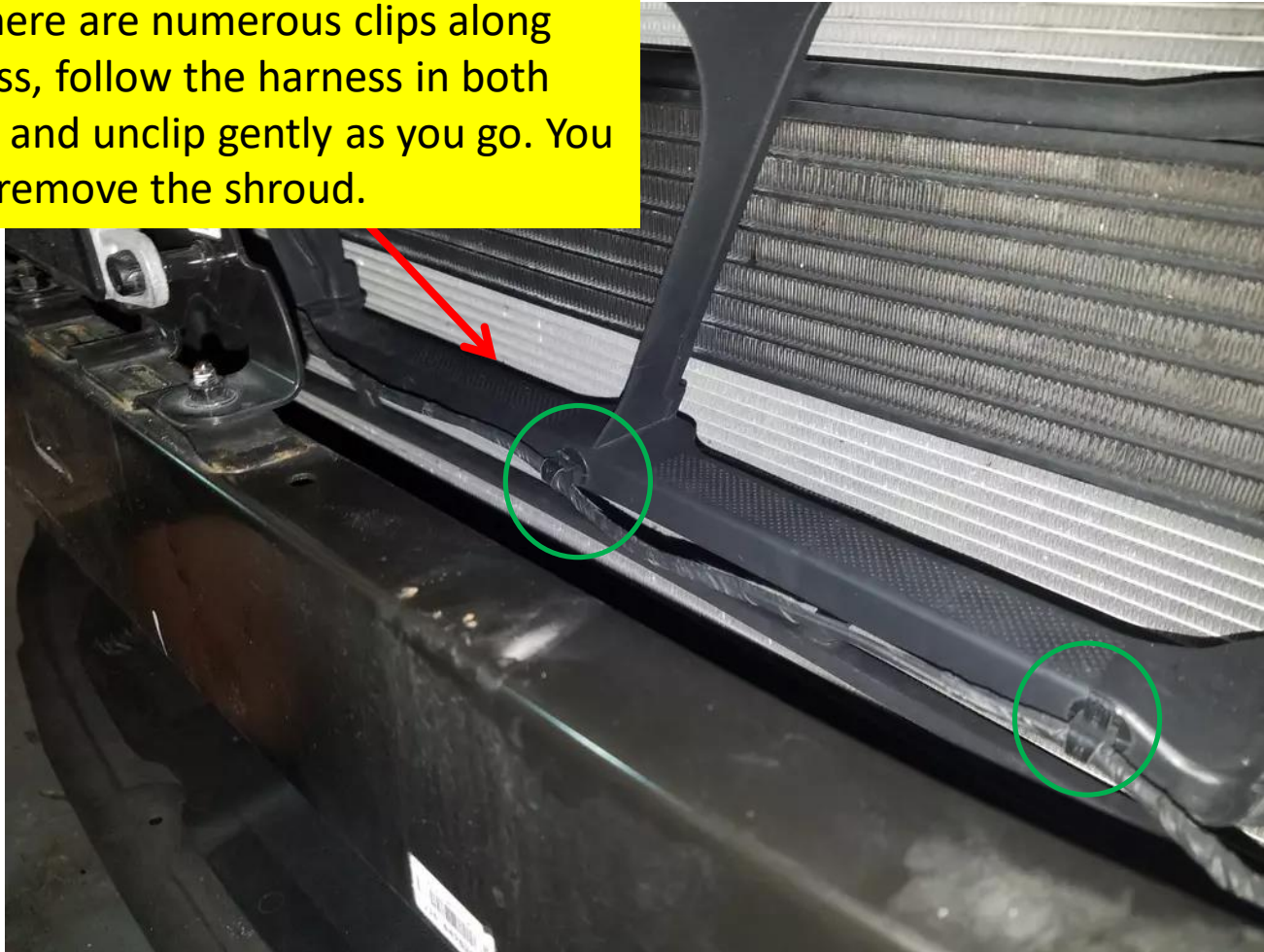
Shroud Removal

Directly above the intercooler there is a screw (10 mm), one on each side, extract them.



Shroud Removal

Carefully unclip the wire harness from the shroud, there are numerous clips along the harness, follow the harness in both directions and unclip gently as you go. You may now remove the shroud.



Stock Snorkel Removal

The stock snorkels are an eye-sore, get rid of them by removing the three screws. The first two screws are located here.



In this illustration, they have already been removed. You will need to re-use these screws at a later time, keep them.

Stock Snorkel Removal

The stock snorkel bottom screw is located here. Remove it.



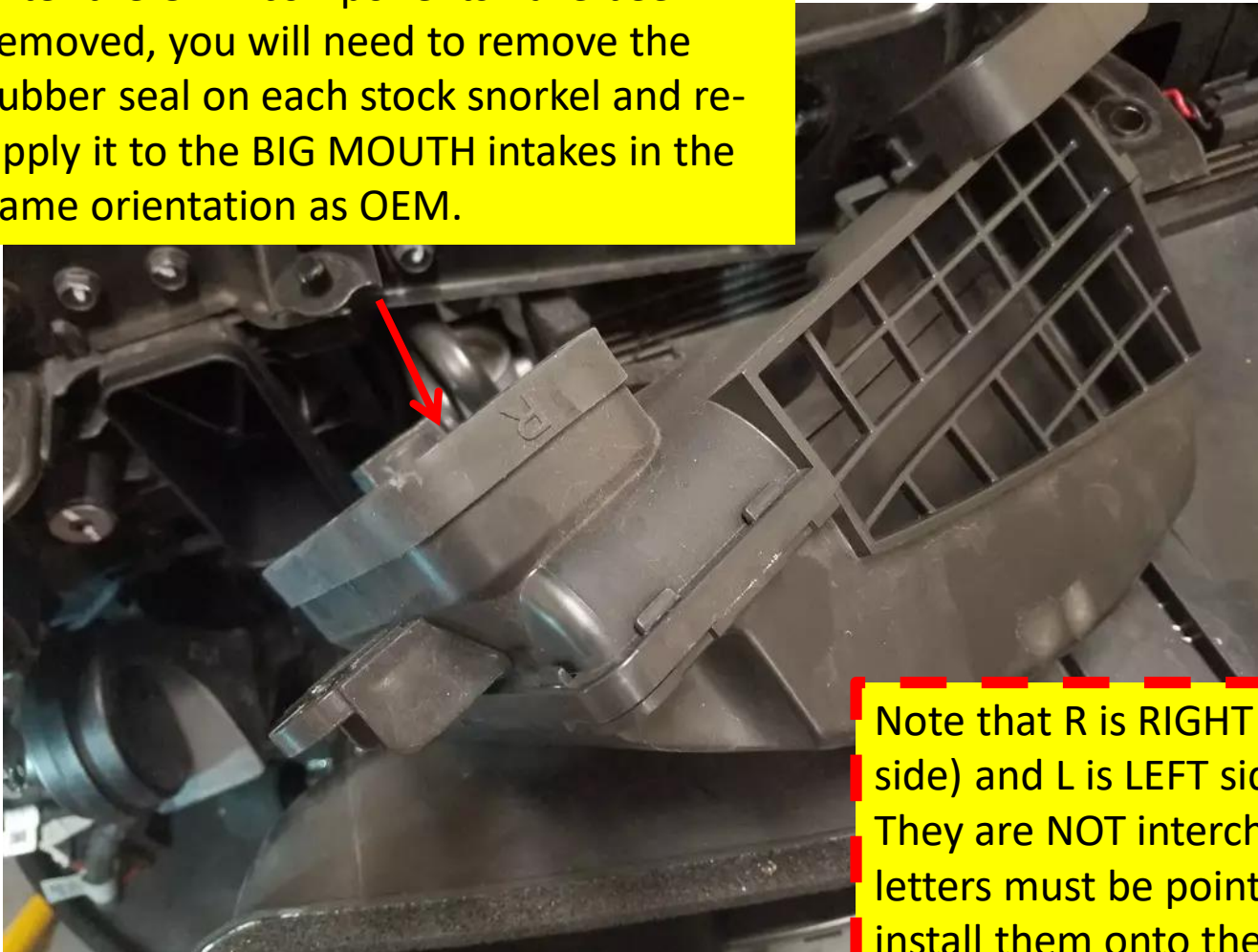
Stock Hardware

You will need to re-use two of the three screws from each side of the OEM snorkels. Keep them handy.



Apply Seal to BIG MOUTH Intakes

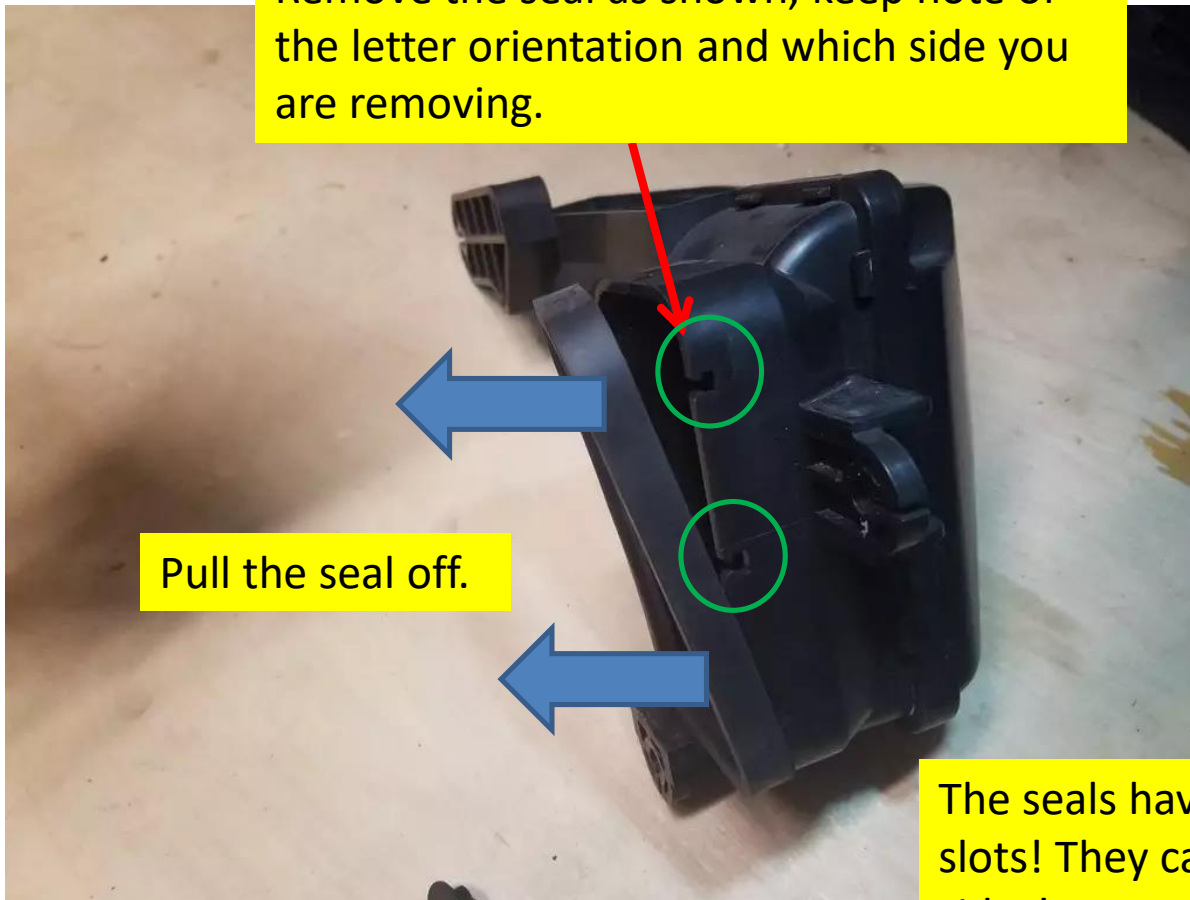
After the OEM components have been removed, you will need to remove the rubber seal on each stock snorkel and re-apply it to the BIG MOUTH intakes in the same orientation as OEM.



Note that R is RIGHT side (or passenger side) and L is LEFT side (or driver side). They are NOT interchangeable and the letters must be pointing up when you re-install them onto the BIG MOUTH intakes!

Remove OEM Seals

Remove the seal as shown, keep note of the letter orientation and which side you are removing.



Pull the seal off.

The seals have asymmetric alignment slots! They cannot be flipped or swapped sides!

Apply Seals to BIG MOUTH Intakes

Apply the seal to the big mouths as shown, in the correct orientation as dictated in the previous slides.



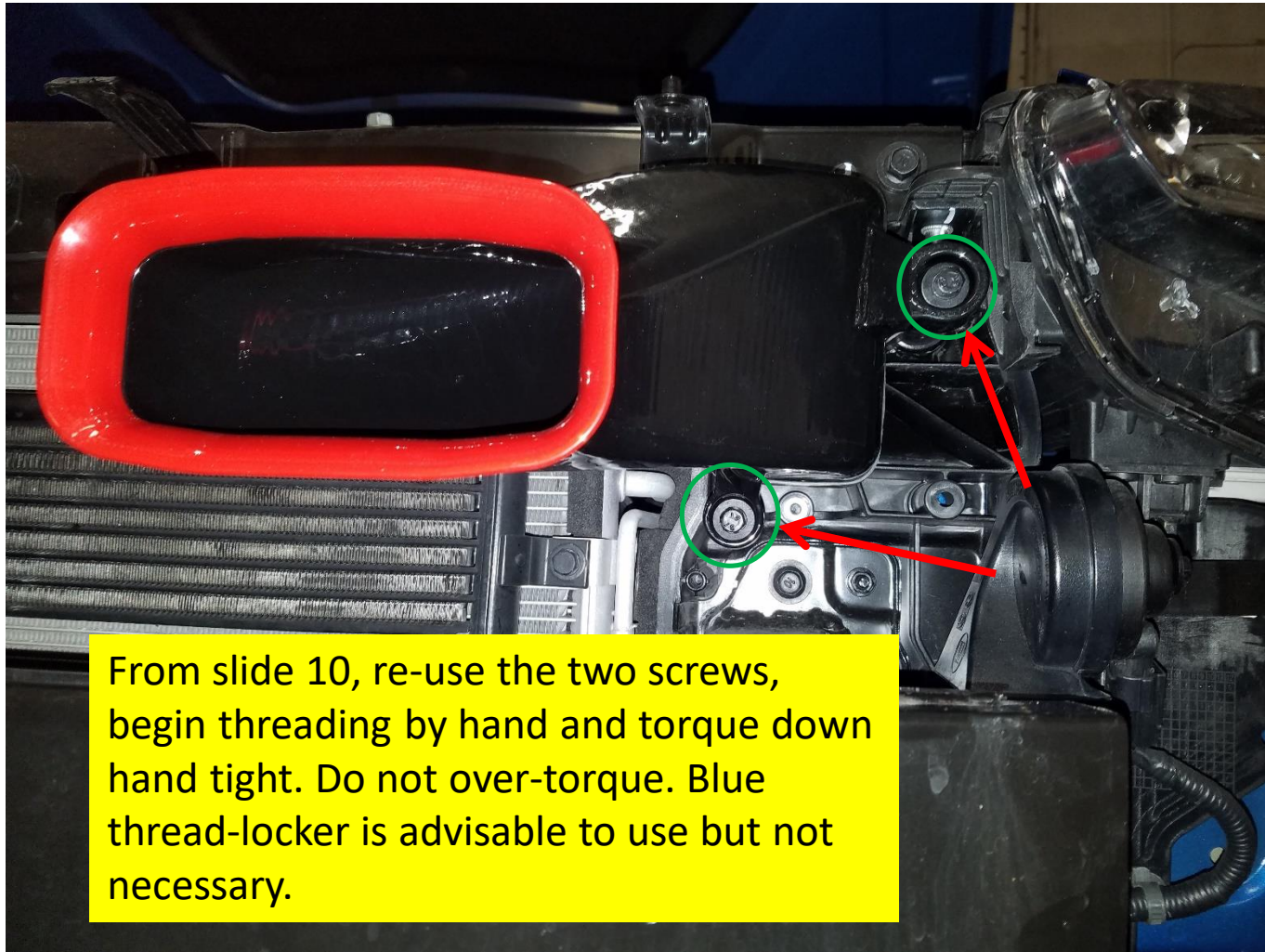
Make sure the slots line up with the seal rubber pegs that are inside the seal, you will feel them seat properly.

Install the BIG MOUTH

Carefully slide the big mouth intakes over the stock ports and ensure the bolt holes line up.

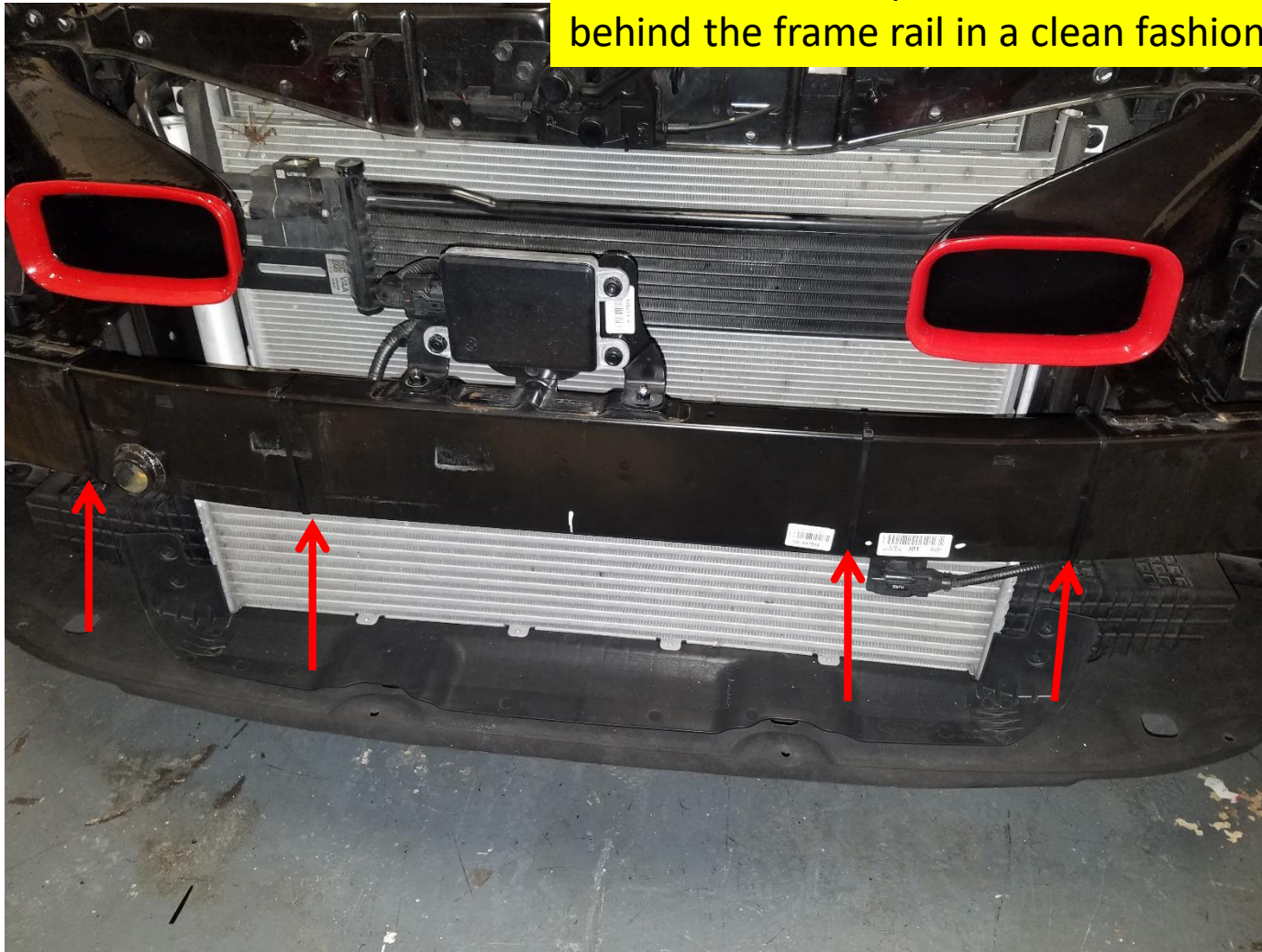


Install the BIG MOUTH



Zip Tie Harness

You will need to zip tie the electrical harness behind the frame rail in a clean fashion.





Re-install Bumper

You may choose to run without the grille for a more aggressive appearance. You can remove it while the bumper is off by using a phillips screw driver from the back side of the bumper. Do note, GT2 owners will have the forward sensor exposed. In the future, we may develop a protector plate for the GT2 owners who wish to run without grilles.

