

# Antunes WATER

ANTUNES [www.antuneswater.com](http://www.antuneswater.com) 180 Kehoe Blvd., Carol Stream, Illinois 60188

## RO Permeate Check Valve Replacement Kit (P/N 7010035)

### **PARTS INCLUDED: Kit 7010035**

- 1 Permeate Check Valve (P/N 2080253)
- 1 Instruction Sheet (P/N 1011632)

### **General**

The Permeate Check Valve should be examined for damage and leaks every 6 months when filters are changed. Although the check valve is well constructed and should last an exceedingly long time, it may eventually need replacement. If you have any questions or experience problems with the check valve replacement, please contact Antunes technical services at (877) 392-7854 toll free.

### **Instructions**

#### **Depressurize and Drain the System**

1. Turn off system water by closing the inlet valve.
2. Close the storage tank water valve at top of tank.
3. Open drinking faucet and allow water to run from the faucet until the flow of water stops, indicating that the system has been de-pressurized. Close the faucet.

#### **Replace the Permeate Check Valve**

1. Identify the Permeate Check Valve located on the membrane housing. See Figures 1 and 2.
2. Remove tubing from the check valve by pushing in on the collets and gently pulling the tubing free.
3. Unscrew the old check valve and dispose.
4. Use thread tape or sealant with the new check valve and screw valve into the membrane housing.
5. Connect tubing to check valve by gently pushing tube into easy-connect fitting. Ensure that tubing connection is secure.

#### **Return the system to service**

1. Open the storage tank water valve at top of tank.
2. Turn on system water by opening the inlet valve.
3. Ensure there are no leaks by inspecting system frequently in the 24 hours following the filter change.
4. The system is now ready to use.

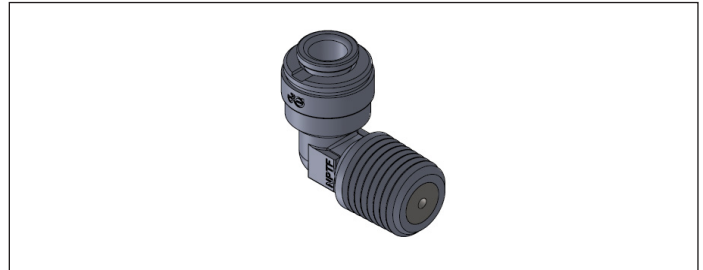


Figure 1. Permeate Check Valve

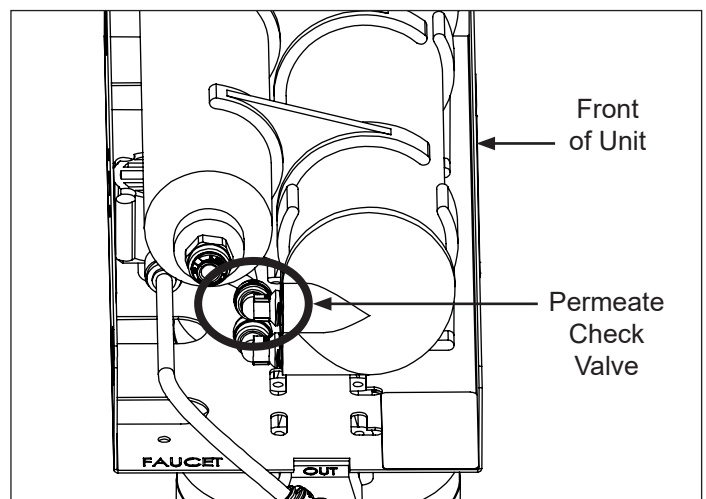


Figure 2. Permeate Check Valve Location