



LinkControl 7 Software

Norsat's LinkControl 7 software offers an intuitive and powerful set of tools for satellite communications professionals and amateurs. Delivering a robust and complete package of acquisition and control interfaces, LinkControl 7 empowers new users to run complex VSAT systems and enables professionals to work more efficiently in the field. LinkControl 7 seamlessly integrates the various hardware and procedures into user friendly steps.

Intuitive

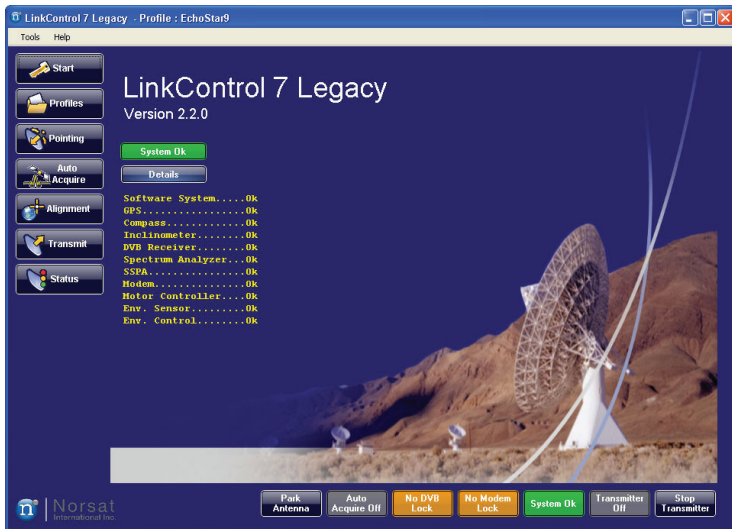
Novice operators can rely on the LinkControl 7 suite of tools and procedures to guide them through the steps required to get a satellite system up and running with ease. Experienced operators and administrators can easily optimize the field experience by adjusting system set up options. LinkControl 7 also automates many monitoring tasks.

Flexible

LinkControl 7 operates similarly on all supported systems, removing the need for users to learn multiple interfaces. Configurable systems auto-detect the components making switching bands or modems as easy as pressing a button. Administrators can configure profiles that will allow field users to switch configurations swiftly, without the need for extensive satellite communications expertise. LinkControl 7 runs on several operating systems including Windows and MacOS.

Advanced

Using client-server architecture, LinkControl 7 frees the user from being directly tied to a system. Clients can be run from devices on a local network, granting system access to multiple users the system at the same time; more remote users can also access the equipment given access to the same IP addresses. Specialty clients can also be deployed, which enhances the user experience; adding SNMP or Two-Button Interfaces.



Flexible

- Multi-OS
- System Configuration
- Profile Configuration System

Intuitive

- Simple Satellite Acquisition
- Automated Tasks
- Administrative controls

Advanced

- Client-Server architecture
- Multi-User interface
- Specialty Clients

LinkControl 7 Software

Features

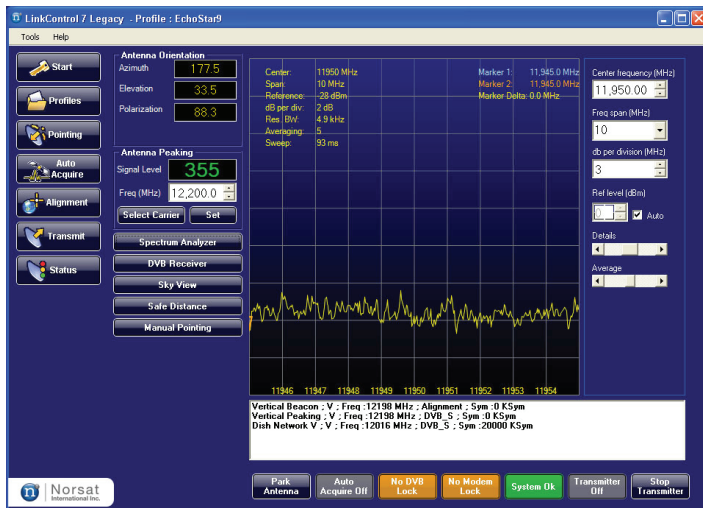
- Assisted Acquisition process
- Auto-Acquisition via user interface or physical buttons
- Status and monitoring with integrated troubleshooting
- Advanced satellite communications tools
- Full integration of modems, SSPAs and other devices
- Closed Loop and Open Loop power control
- Satellite Tracking
- Extensive Satellite Almanac
- Management of multiple RF bands (C, X, Ku and Ka bands)

Profile System

- Set up acquisition details at home for deployment in the field
- Switch Modem/Encoder parameters quickly
- Deploy to a fleet of equipment quickly
- Easy switch between RF bands

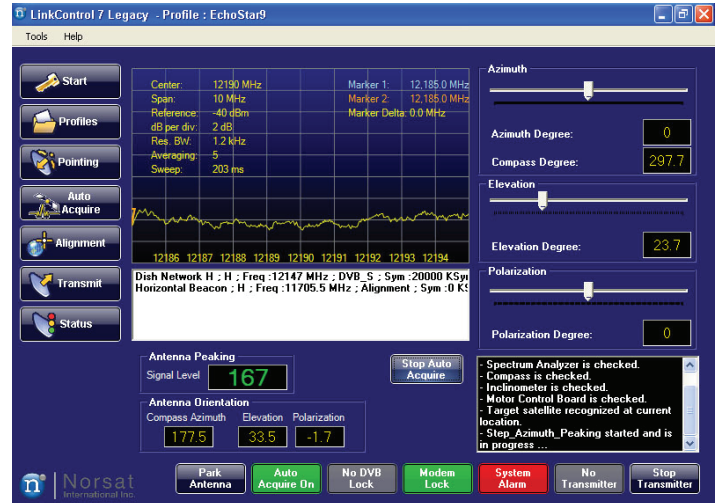
Auto-Acquire

- One touch to acquire
- Uses GPS, Compass and inclinometer for location data
- Finds satellite using beacon detection, spectrum analyzer, DVB/S(2) and modem tools
- Inclined orbit tracking
- Polarization isolation as well as automated peaking



Satellite Communication Tools

- Spectrum Analyzer
- GPS and Compass integration
- Motor Controls
- DVB/S(2) Receivers
- Closed Loop Power control
- Safe distance calculations
- Environmental monitoring



Advanced Options

- Multi and remote client support
- SNMP client option
- Physical Button interface

Installation Requirements

- Windows:** Windows XP, Windows XP Embedded, Windows 7 and Windows7 embedded. Requires .NET installed
- MacOSX:** requires 10.6 or higher.