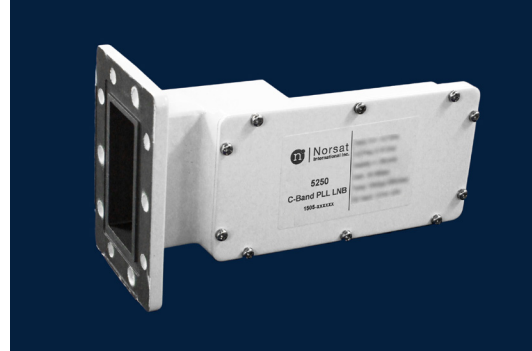




LNB

C-BAND PLL

5200



SPECIFICATIONS

Noise Temperature	15K typ., 30K max. at room temp. @ CF
L.O. Stability	± 150 KHz, ± 250 KHz
Phase Noise (SSB) max.	-73 dBc/Hz at 1 kHz -83 dBc/Hz at 10 kHz -95 dBc/Hz at 100 kHz
Input VSWR	2.5 : 1 max.
Output VSWR	2.5 : 1 max.
Gain	60 dB typ., 55 dB min., 70 dB max.
Gain Flatness (over full band)	≤ 5 dB p-p
Output P1dB	+ 10 dBm min.

DC Power	+ 12V to + 24V DC
Current	250 mA max.
Input (waterproof)	CPR 229G waveguide grooved
Output (waterproof)	F-Connector (75 Ohm) N-Connector (50 Ohm)
Dimensions (L x W x H)	179 mm x 99 mm x 70 mm (7.05 in x 3.9 in x 2.75 in)
Weight	575 g (20.3 oz)
Operating Temperature	- 40 to + 60°C
Storage Temperature	- 50 to + 70°C

FREQUENCY BANDS

Frequency Band (GHz)	3.4 - 4.2
L.O. Frequency (GHz)	5.15
IF Frequency (MHz)	950 - 1750

HOW TO ORDER

5250F



F - 75 Ohm
N - 50 Ohm
15: ±150 kHz
25: ±250 kHz

MECHANICAL DIAGRAM

