



LNB

KU-BAND QUAD BAND PLL

1000HU



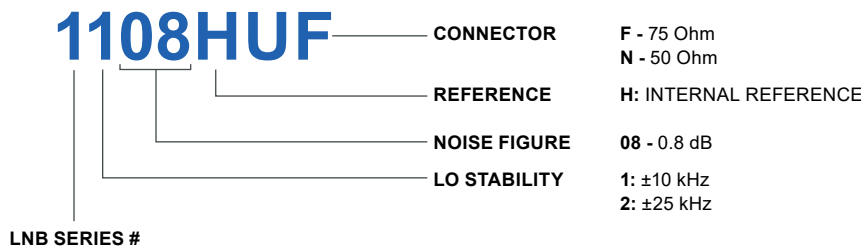
SPECIFICATIONS

Noise Figure	0.8 dB typ., 1.0 dB max. at room temp. @ CF	DC Power	+ 12V to + 24V DC (See below for Band Select)
L.O. Stability	±10kHz, ±25 kHz	Tone:	Frequency 22 kHz ±4 kHz Amplitude Voltage 0.6 ± 0.2 V Duty Cycle 50% ±10%
Phase Noise (SSB) max.	-70 dBc at 1 kHz -80 dBc at 10 kHz -95 dBc at 100 kHz	Current	350 mA max.
Input VSWR	2.5 : 1 max.	Input (waterproof)	WR-75 waveguide grooved
Output VSWR	2.5 : 1 max.	Output (waterproof)	F-Connector (75 Ohm) N-Connector (50 Ohm)
Gain	60 dB typ., 55 dB min., 65 dB max.	Dimensions (L x W x H)	128 mm x 60 mm x 42 mm (5.04 in x 2.36 in x 1.65 in)
Gain Flatness (over full band)	5 dB p-p	Weight	450g max.
Output P1dB	+ 5 dBm min.	Operating Temperature	- 40 to +60°C
		Storage Temperature	- 40 to +80°C

FREQUENCY BANDS

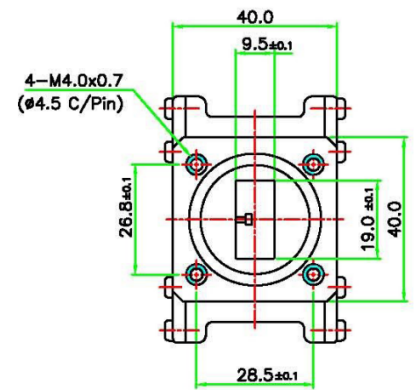
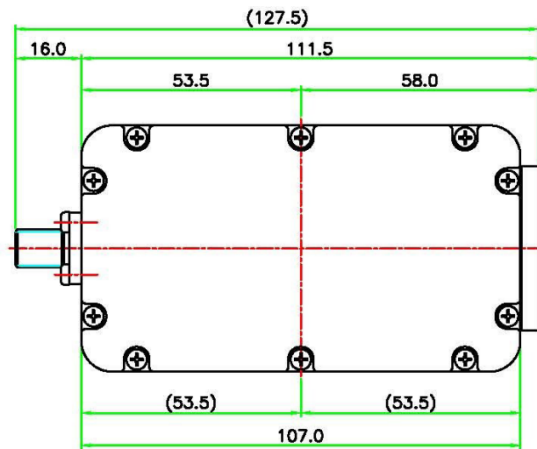
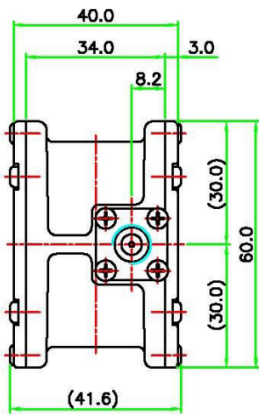
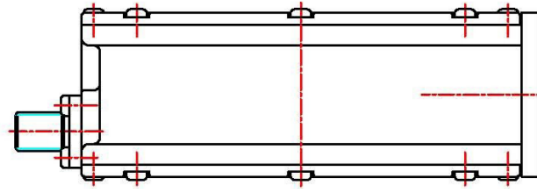
	Band 1 (13V)	Band 2 (13V / 22 kHz Tone)	Band 3 (18V)	Band 4 (18V / 22 kHz Tone)
Frequency Band (GHz)	10.70 - 11.70	10.95 - 11.70	11.70 - 12.75	12.25 - 12.75
L.O. Frequency (GHz)	9.75	10.00	10.75	11.30
IF Frequency (MHz)	950 - 1950	950 - 1700	950-2000	950 - 1450

HOW TO ORDER





MECHANICAL DIAGRAM



UNIT : mm