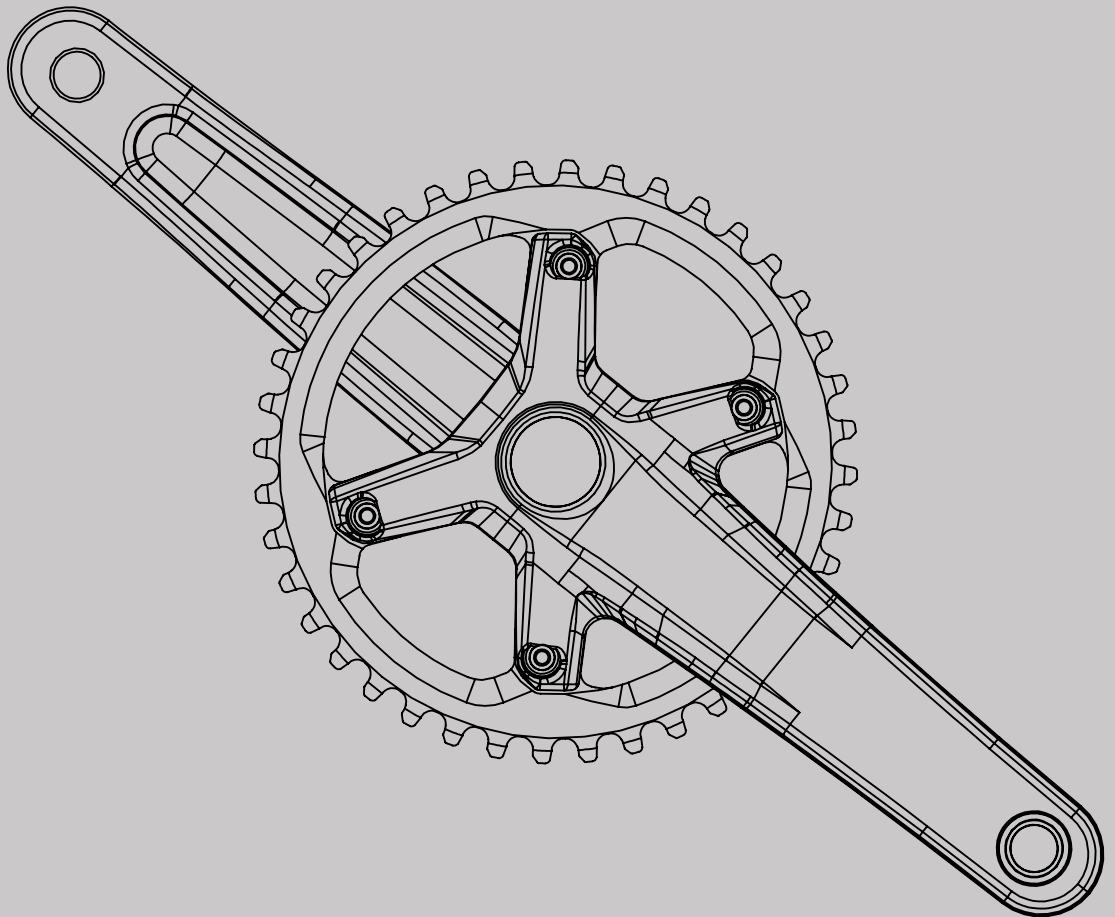


microSHIFT

SWORD Crankset Installation Manual

† SWORD



Important Notice



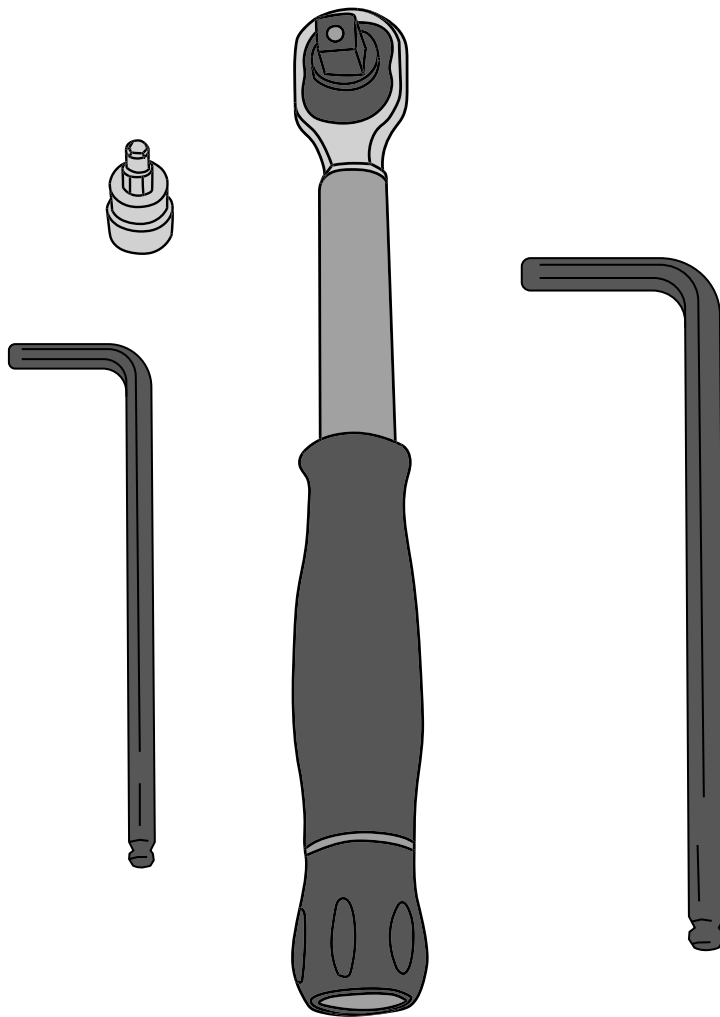
REMINDER

Before installing the products, please read and understand the installation procedures. Improper installation can lead to premature product failures or even injuries. If you have any questions on how to install, please contact us or consult with a professional bicycle mechanic.

This installation applies to the 1x and 2x SWORD cranksets

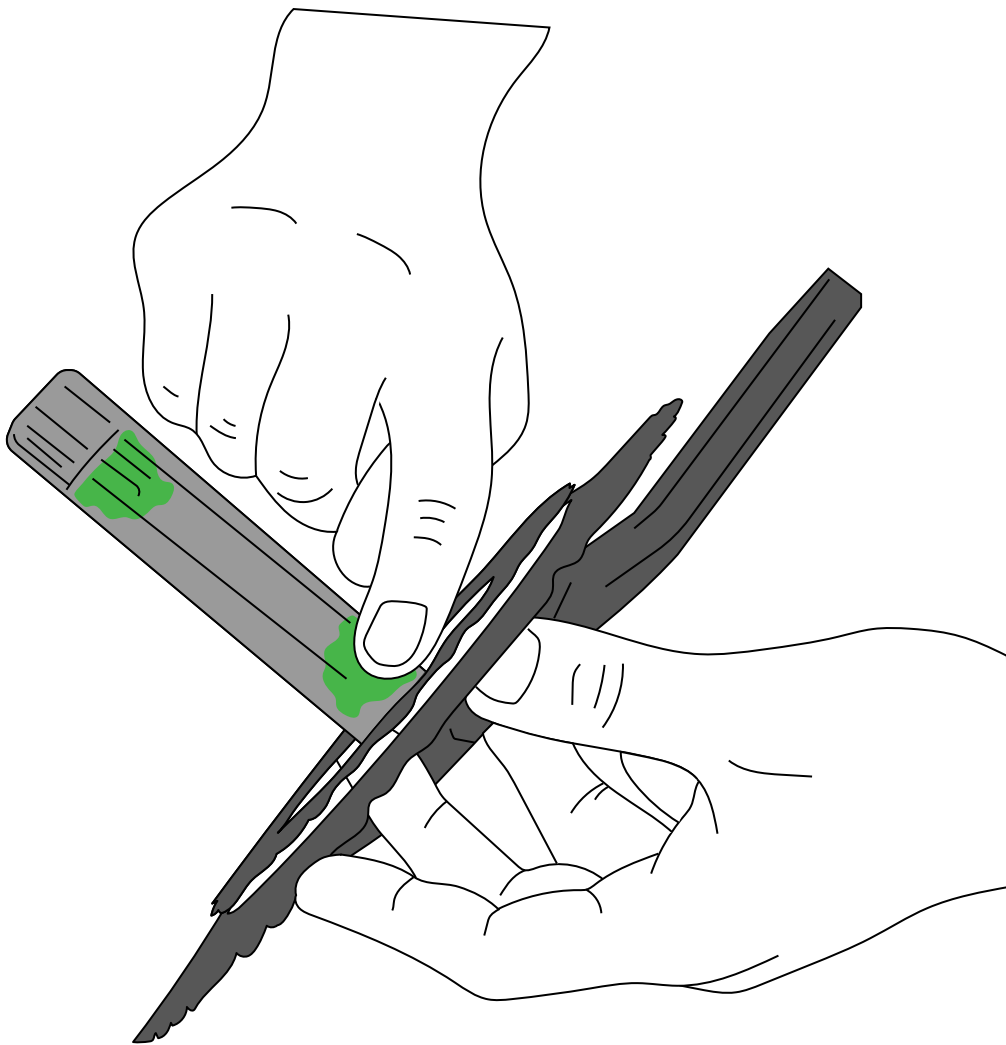
Tools and Supplies

- Torque Wrench
- 5mm Hex Bit
- 5mm Hex Wrench
- 8mm Hex Wrench



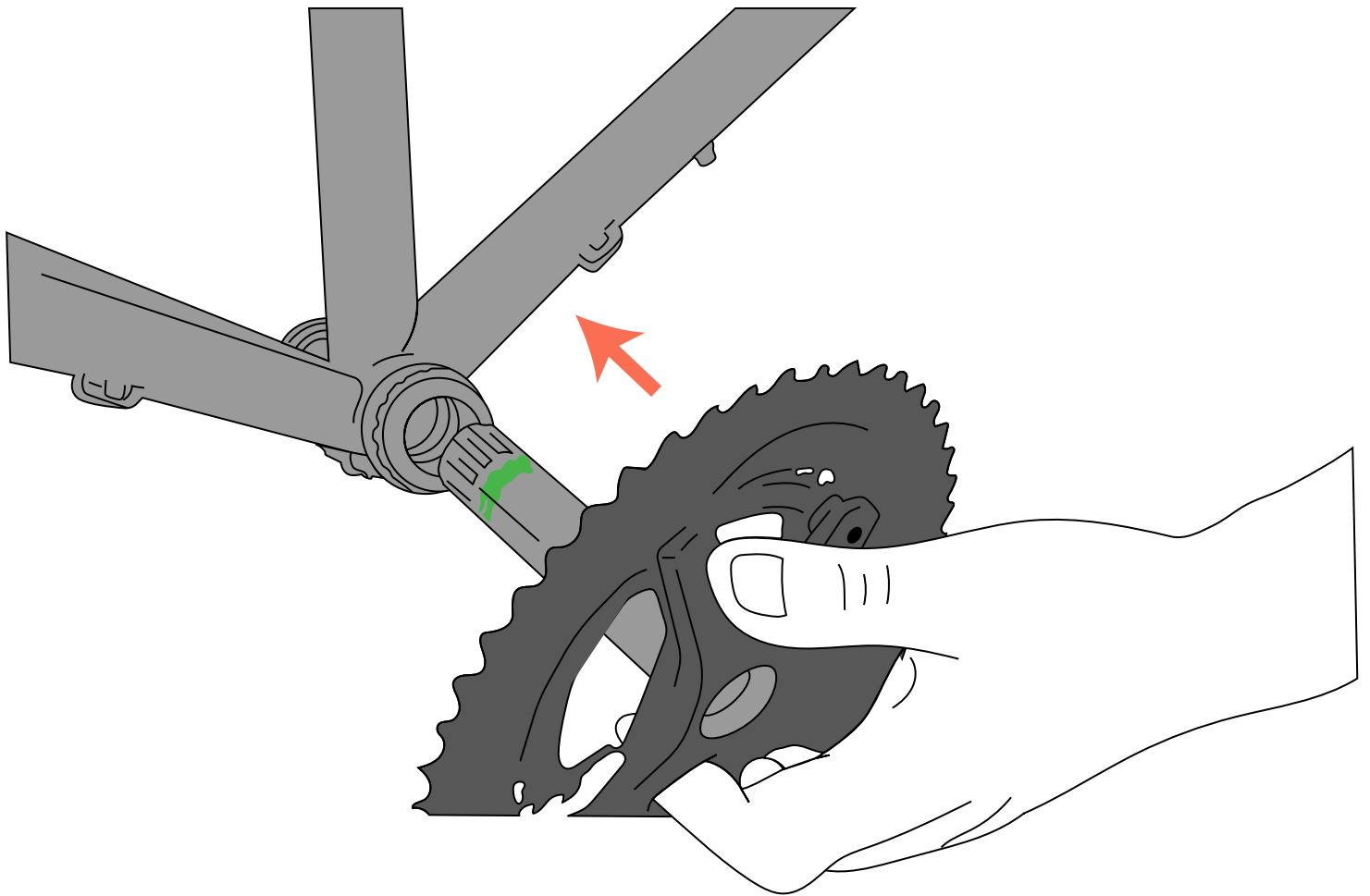
1.

Apply a thin layer of **grease** to the bearing seats on the spindle.



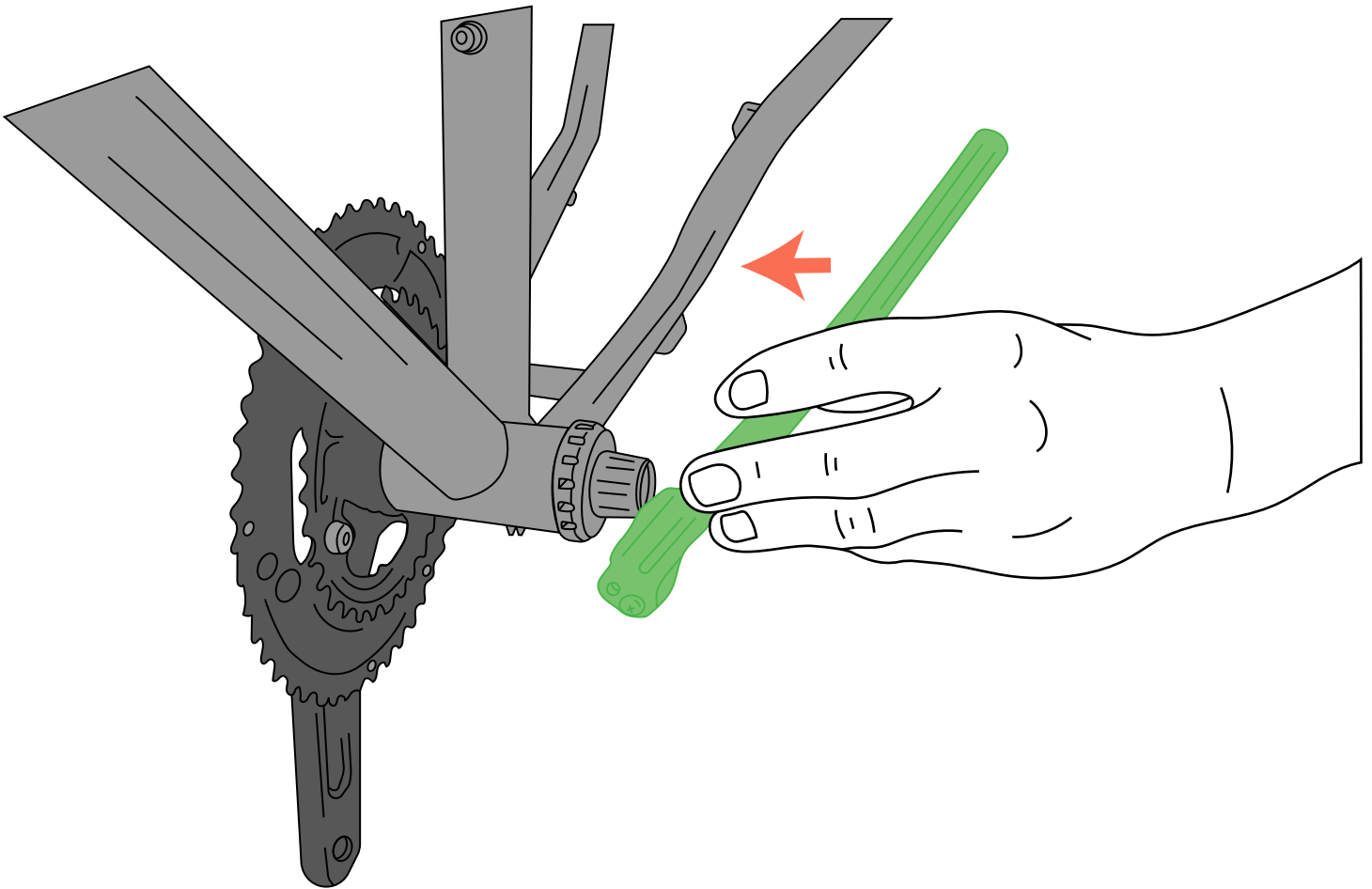
2.

Slide the crank through the drive side bottom bracket.



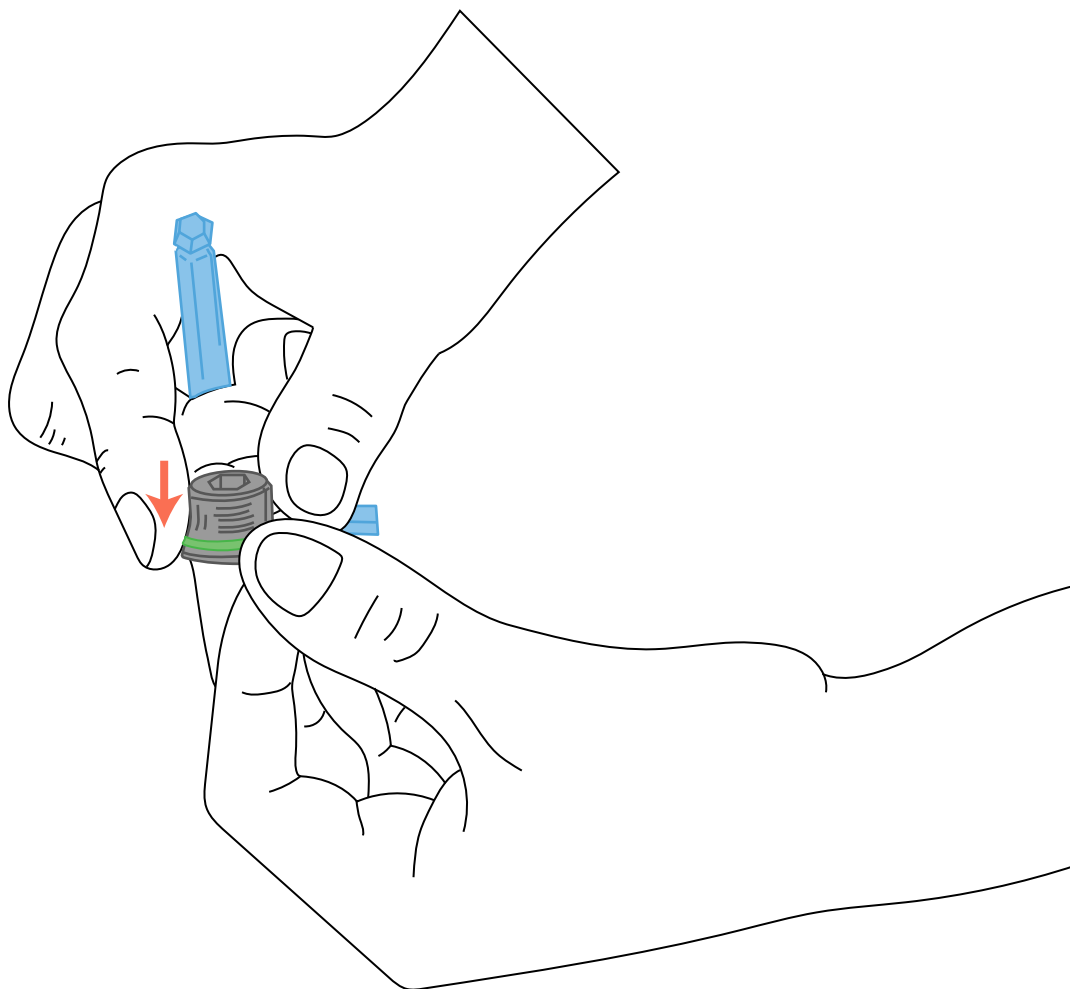
3.

Slide the **left side crank** arm onto the spindle.



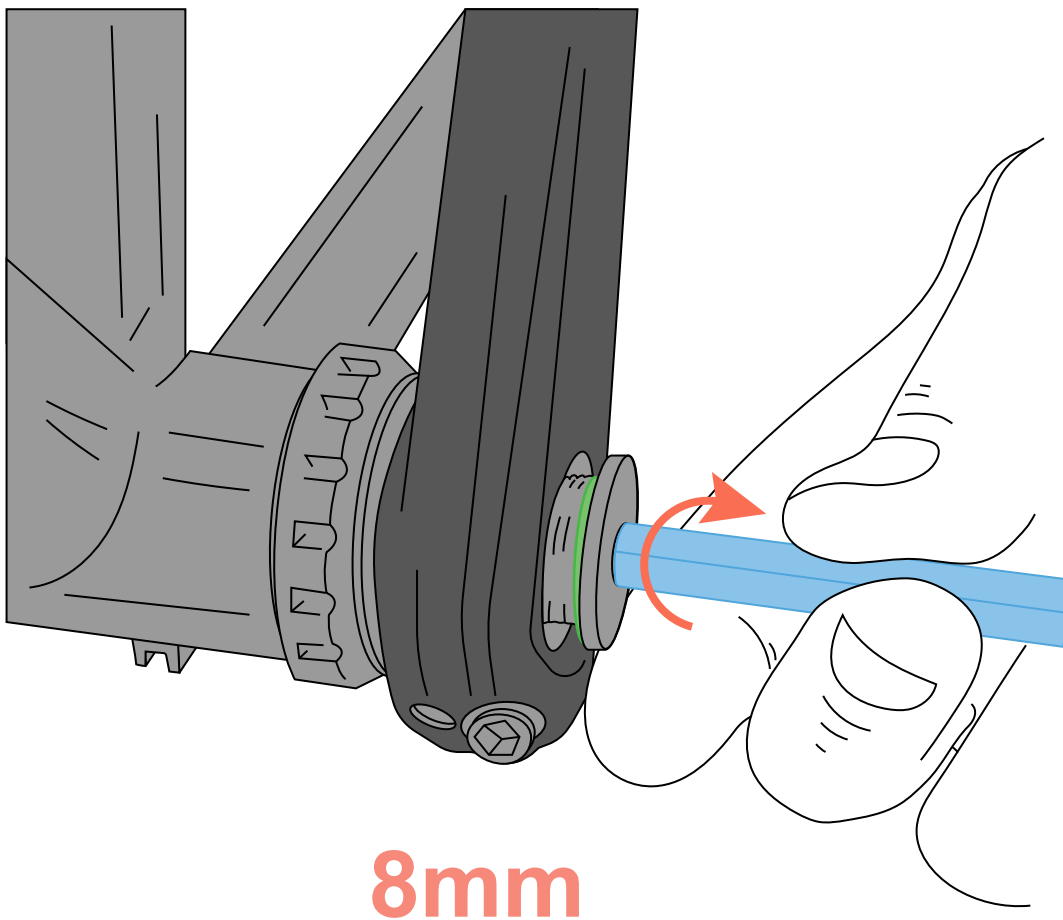
4.

The crank includes **a washer** that goes on the preload bolt. Make sure the washer washer is on the preload bolt.



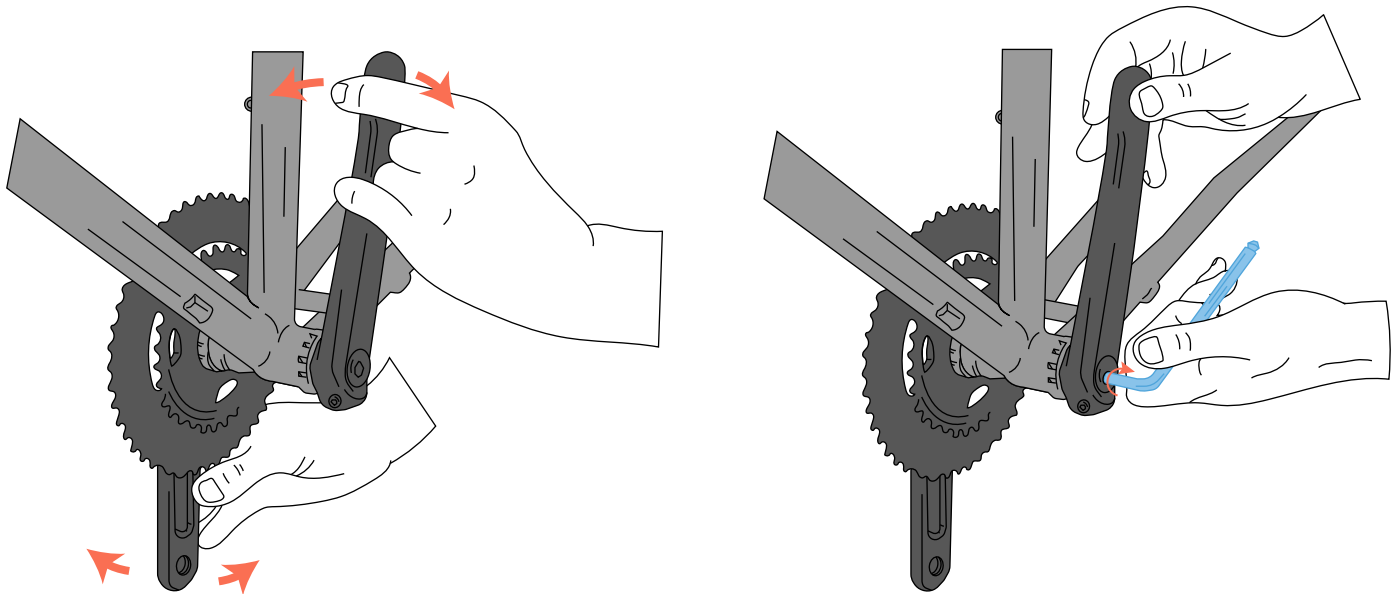
5.

Thread the preload bolt into the spindle with your **8mm hex wrench**.



6.

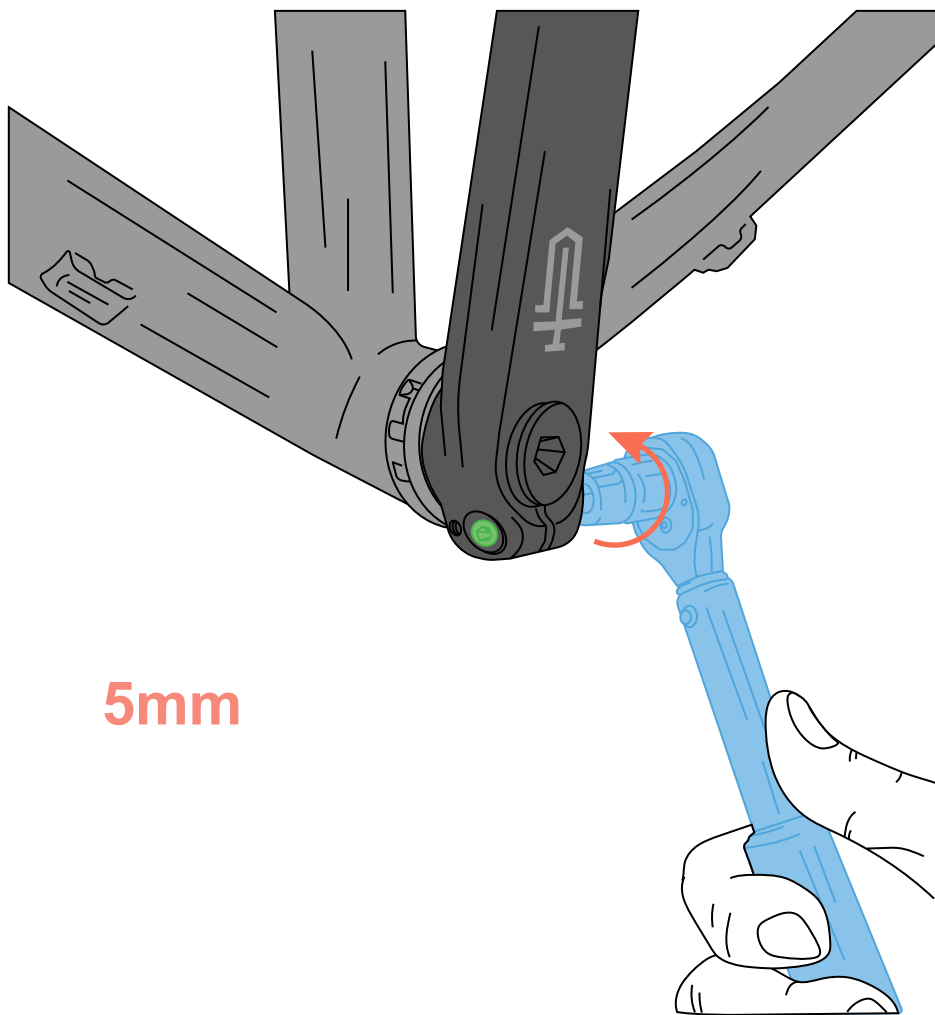
The preload bolt is for removing play between the spindle and bottom bracket bearings. Lightly tighten the preload bolt until there is no play between the spindle and bottom bracket bearings and no further, about 1-3Nm. Check for play by rocking the crank arms side to side. If play exists, tighten the preload bolt further. Do not exceed 3Nm.



1-3Nm

7.

Tighten **both crank arm pinch bolts** to **12-15Nm**. Alternate between bolts as you tighten them.



microSHIFT



www.microSHIFT.com