



PARTICLE SEPARATOR X2

www.kwtfilters.com

P/N: 20-1005

Approx. Install Time: 0 Hrs 45 Min

INSTALLATION INSTRUCTIONS

VEHICLE TYPE

Year: 2011 - 2014
Make: **Polaris**
Model: **RZR 900**
Engine: **875cc, 999cc**

TOOLS REQUIRED

- 3/16" Standard Wrench
- 1/8" Standard Wrench
- Phillips Screwdriver
- Wire Cutters/Scissors
- 4" Diameter Hole Saw or Dremel Tool

BEFORE YOU START

Please read the entire installation manual before proceeding.
Ensure all part items listed on page 4 exist
If you are missing any of the components, call our customer support at 888-340-5055.
Do not work on the vehicle while the engine is running or hot.
Ensure vehicle is turned off and brake is on.

BOLT TORQUE GUIDE

Size	Torque
5/16"	25.8in-lbs
5/32"	34.5in-lbs

**Recommend using Loctite on all bolts during assembly*

WARNING:

THIS EQUIPMENT SHOULD BE INSTALLED, ADJUSTED, AND SERVICED BY PERSONNEL FAMILIAR WITH THE CONSTRUCTION AND OPERATION OF THIS TYPE OF EQUIPMENT AND THE HAZARDS INVOLVED. FAILURE TO OBSERVE THIS PRECAUTION COULD RESULT IN SEVERE INJURY. READ THIS MANUAL THOROUGHLY AND MAKE SURE YOU UNDERSTAND THE PROCEDURES BEFORE YOU ATTEMPT TO OPERATE THIS EQUIPMENT. THE PURPOSE OF THIS MANUAL IS TO PROVIDE YOU WITH INFORMATION NECESSARY TO SAFELY OPERATE, MAINTAIN, AND TROUBLESHOOT THIS EQUIPMENT. DO NOT USE THIS EQUIPMENT FOR ANY REASON OTHER THAN ITS INTENDED PURPOSE. FAILURE TO FOLLOW THESE INSTRUCTIONS WILL VOID ANY WARRANTY. KEEP THIS MANUAL FOR FUTURE REFERENCE. THE INFORMATION CONTAINED IN THIS MANUAL IS SUBJECT TO CHANGE WITHOUT NOTICE.



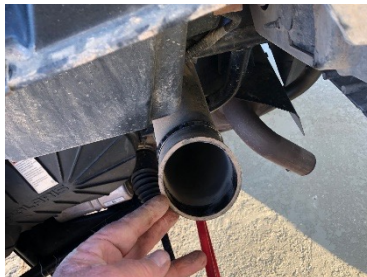
PARTICLE SEPARATOR X2 P/N: 20-1005

INSTALLATION INSTRUCTIONS

STEP 1. The preferred placement for the Particle Separator (1) is nearest to the engine intake and on the bottom bar of the roll cage. Make sure you have enough room to fit the clamps and particle separator on the roll cage without any interference. Planning ahead will save you time during the install. Our clamps are adaptable enough to work around any additional accessories you may have on the roll cage in addition to the particle separator. Prior to installing the Particle Separator



STEP 2. Remove the fender panel behind the driver's seat revealing the stock box attached to your air intake box. Remove the plastic box that attaches to the air filter intake revealing your oil drain off, and air intake tube. The small oil breather will need to be zip-tied off to the side. Dispose of the stock box shown in picture 1.



STEP 3. Insert duct coupler (8) into the flex hose (9). Add two hose clamps (2) over the flexible hose (8) and the duct coupler (8). Insert duct coupler (8) and flexible hose (9) into the intake airbox. Tighten one hose clamp (2) over the duct coupler and one hose clamp (2) over the flex hose (9).



STEP 4. You will now cut a 4" hole behind the driver seal on the sidewall corner of the bed (see photo 1), using a 4" diameter hole saw or trim using a dremel. Install included rubber stripping around the hole in the air plastic panel. Insert the flexible hose (9) through the hole and attach to the stock tube that was revealed when taking out the plastic box.





PARTICLE SEPARATOR X2 P/N: 20-1005

POLARIS 900 INSTALLATION INSTRUCTIONS

STEP 5. Use 1/8" Hex Key to unscrew bolt and remove from Roll Bar Clamp (7). Install Clamp onto roll bar being. Insert Metal Bracket (5) onto the on the Roll Bar Clamp (7), then insert Roll Bar Clamp (7) bolt into the Roll Bar Clamp (7) and tighten slightly. Do not fully tighten. Clamp should rotate freely and will be fully tightened later in assembly. After Roll Bar Clamps (1) are installed, measure gap between the Metal Brackets (5) and set at 9.5 inches and tighten bolt on pivot body per the torque guide on page 1.



STEP 6. For upper roll bar installations use Step 5 with Metal Brackets (5). Install Particle Separator (1) onto the Metal Brackets (5) on the left and right-side using Bolt (6) and Washer (4) and a 3/16" standard wrench to tighten. Washer **MUST** be between the Metal Bracket (5) and Particle Separator (1). If the washer is placed under the head of the Bolt (6) the Particle Separator will rotate freely and may cause damage.



STEP 7. Measure the flex hose ducting (8) to the Particle Separator (1), *if necessary*, cut excess off the Flexible Hose Duct (8) with wire cutters or scissors. NOTE: pull 1" of the internal wire from the top of the hose for a secure fit to the Particle Separator (1). Insert the Hose Clamp (2) over the end of the Flexible Hose Duct (8) that is sticking out of the Air Intake cover. Place the Flexible Hose Duct (9) over the Particle Separator (1) intake and tighten with a Philips screwdriver.

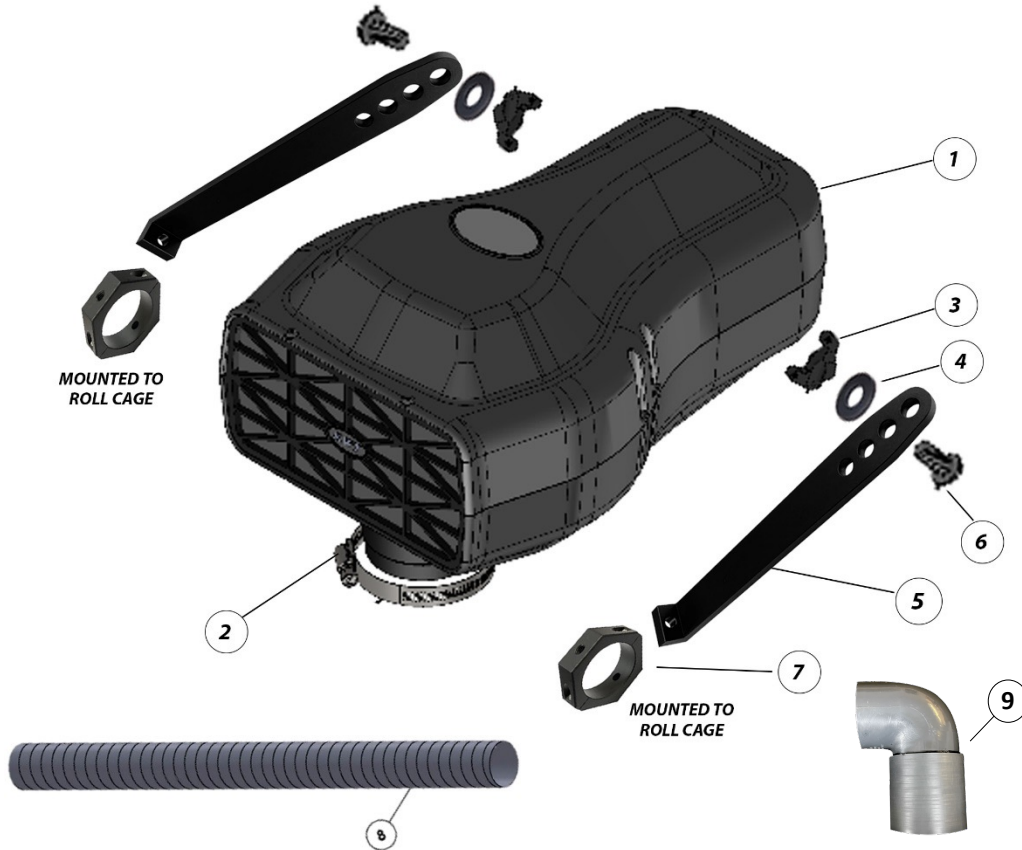




PARTICLE SEPARATOR X2 P/N: 20-1005

INSTALLATION INSTRUCTIONS (CONTINUED)

EXPLODED VIEW / PARTS LIST



ITEM	QTY	DESCRIPTION	PART NUMBER
1	1	PARTICLE SEPARATOR	KW9728-01
2	2	HOSE CLAMP	KW9728-02
3	2	MOUNTING BRACKET	KW9728-03
4	2	WASHER, 5/16 NORD-LOCK	KW9728-04
5	2	BRACKET, METAL	KW9728-05

ITEM	QTY	DESCRIPTION	PART NUMBER
6	2	BOLT 5/16-18x 5/8	KW9728-06
7	2	CLAMP, ROLL BAR	KW9728-07a
8	1	FLEXIBLE DUCT HOSE 3.25" DIA	KW9728-08
9	1	DUCT ADAPTOR	KW9728-09

SIDE NOTE

KWT recommends that you apply a layer of waterproof grease, such as made by Bel-Ray or Super Lube, on the inside flange of the stock Air Filter Box to keep dust from bypassing the O-ring Seal.



PARTICLE SEPARATOR X2 P/N: 20-1005 INSTALLATION INSTRUCTIONS (CONTINUED)

ONGOING MAINTENANCE

Your KWT Particle Separator requires very little if any maintenance depending on where you drive. Always check to make sure the opening in front of the Particle Separator is not blocked by mud or other debris each time you exit the UTV.

To clean your Particle Separator, review the cleaning instructions below. The dirt collection chamber should be emptied monthly. Intervals may increase as you increase riding miles.

CLEANING INSTRUCTIONS

To clean the KWT Particle Separator push in the three buttons located on the bottom to release the dirt collection tray. Empty the dirt by taping it out. Prior to reinstalling the dirt tray, press and engage all 3 buttons. Install the tray in place starting from the back. Squeeze the dirt collection chamber onto the filter until hearing an audible “click”. Repeat for the two front buttons. To ensure the dirt collection tray is securely fastened, gently pull down on each of the three corners to make sure no gaps are visible.

