



PARTICLE SEPARATOR X2

Install Video on YouTube

www.kwtfilters.com

P/N: 22-7001

Approx. Install Time: 0 Hrs 60 Min

INSTALLATION INSTRUCTIONS

VEHICLE TYPE

Year: **2022**
Make: **CFMOTO**
Model: **Zforce H.O. EX**
Engine: **950**

TOOLS REQUIRED

- 5/16" Standard Wrench
- 5/32" Allen Wrench
- Phillips Screwdriver
- Wire Cutters, Scissors
- 4" Diameter Hole Saw and Drill

BEFORE YOU START

Please read the entire installation manual before proceeding.
Ensure all part items listed on page 4 exist
If you are missing any of the components, call our customer support at 888-340-5055.
Do not work on the vehicle while the engine is running or hot.
Ensure vehicle is turned off and brake is on.

BOLT TORQUE GUIDE

Size	Torque
5/16"	25.8in-lbs
5/32"	34.5in-lbs

WARNING:

THIS EQUIPMENT SHOULD BE INSTALLED, ADJUSTED, AND SERVICED BY PERSONNEL FAMILIAR WITH THE CONSTRUCTION AND OPERATION OF THIS TYPE OF EQUIPMENT AND THE HAZARDS INVOLVED. FAILURE TO OBSERVE THIS PRECAUTION COULD RESULT IN SEVERE INJURY. READ THIS MANUAL THOROUGHLY AND MAKE SURE YOU UNDERSTAND THE PROCEDURES BEFORE YOU ATTEMPT TO OPERATE THIS EQUIPMENT. THE PURPOSE OF THIS MANUAL IS TO PROVIDE YOU WITH INFORMATION NECESSARY TO SAFELY OPERATE, MAINTAIN, AND TROUBLESHOOT THIS EQUIPMENT. DO NOT USE THIS EQUIPMENT FOR ANY REASON OTHER THAN ITS INTENDED PURPOSE. FAILURE TO FOLLOW THESE INSTRUCTIONS WILL VOID ANY WARRANTY. KEEP THIS MANUAL FOR FUTURE REFERENCE. THE INFORMATION CONTAINED IN THIS MANUAL IS SUBJECT TO CHANGE WITHOUT NOTICE.



PARTICLE SEPARATOR X2 P/N: 22-7001

INSTALLATION INSTRUCTIONS

SEE EXPLODED VIEW ON PAGE 4 FOR ASSOCIATED ITEM PART NUMBERS

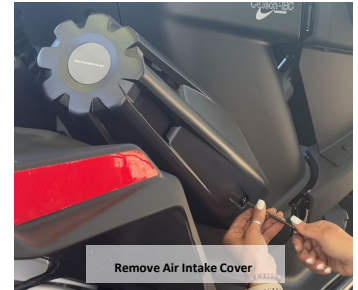
STEP 1. The preferred placement for the Particle Separator (1) is nearest to the engine intake on the right passenger side of the vehicle, located on the top bar of the roll cage. Make sure you have enough room to fit the clamps and particle separator on the roll cage without any interference. Planning ahead will save you time during the install. Prior to installing the Particle Separator (1), remove the passenger seat, panel cover behind passenger seat, and air intake cover on the passenger side of the vehicle. Disconnect the air intake ducting from the air filter box by loosening the 2 hose clamps and removing the standard bolt. Once both are removed, pull the stock air intake duct out and throw away.



Remove Passenger Seat



Panel Behind Passenger Seat



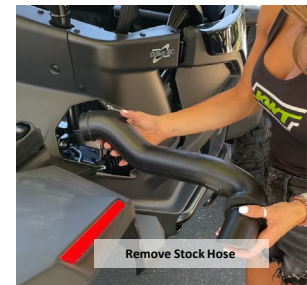
Remove Air Intake Cover



Disconnect Outside Duct Connection



Disconnect Hose Connection to Air filter box



Remove Stock Hose

STEP 2. Measure the center of the panel adjacent to the stock air filter compartment on the right. Cut a hole using a 4" diameter hole saw. Insert included rubber stripping around the hole. Insert Flexible Hose Duct (8) from the air intake area through the panel hole. Connect the Duct Adapter (9) inside the vehicle's air intake, place the Hose Clamp (2) over the end of the Flexible Hose Duct (8) and securely tighten. Insert Flexible Hose Duct (8) over the Duct Adapter (9) and tighten Hose Clamp (2) with a Phillips screwdriver.



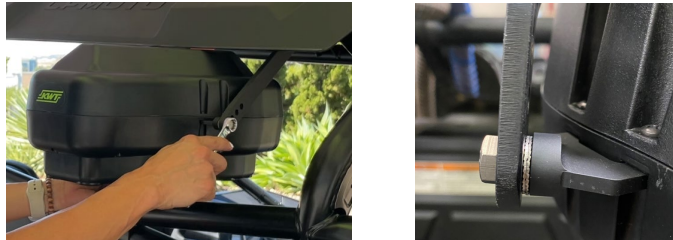


PARTICLE SEPARATOR X2 P/N: 22-7001 INSTALLATION INSTRUCTIONS (CONTINUED)

STEP 3. Use 1/8" Allen wrench to unscrew bolts from Roll Bar Clamps (7). Install Clamp onto the top roll bar. Do not fully tighten, clamps should be able to rotate slightly and will be fully tightened later in assembly. Place Metal Brackets (5) onto the on the Roll Bar Clamps (7) using provided hardware and tighten. After Roll Bar Clamps (7) and Metal Bracket (5) are installed, measure gap between the Metal Brackets (5) and set at 9.5 inches. Tighten Roll Bar Clamps (7) and Metal Brackets (5) per the torque guide on page 1.



STEP 4. Install Particle Separator (1) onto the Metal Brackets (5) on the left and right-side using Bolt (6) and Washer (4). Washer **MUST** be between the Metal Bracket (5) and Particle Separator (1). If the washer is placed under the head of the Bolt (6) the Particle Separator will rotate freely and may cause damage. Loctite is recommended.



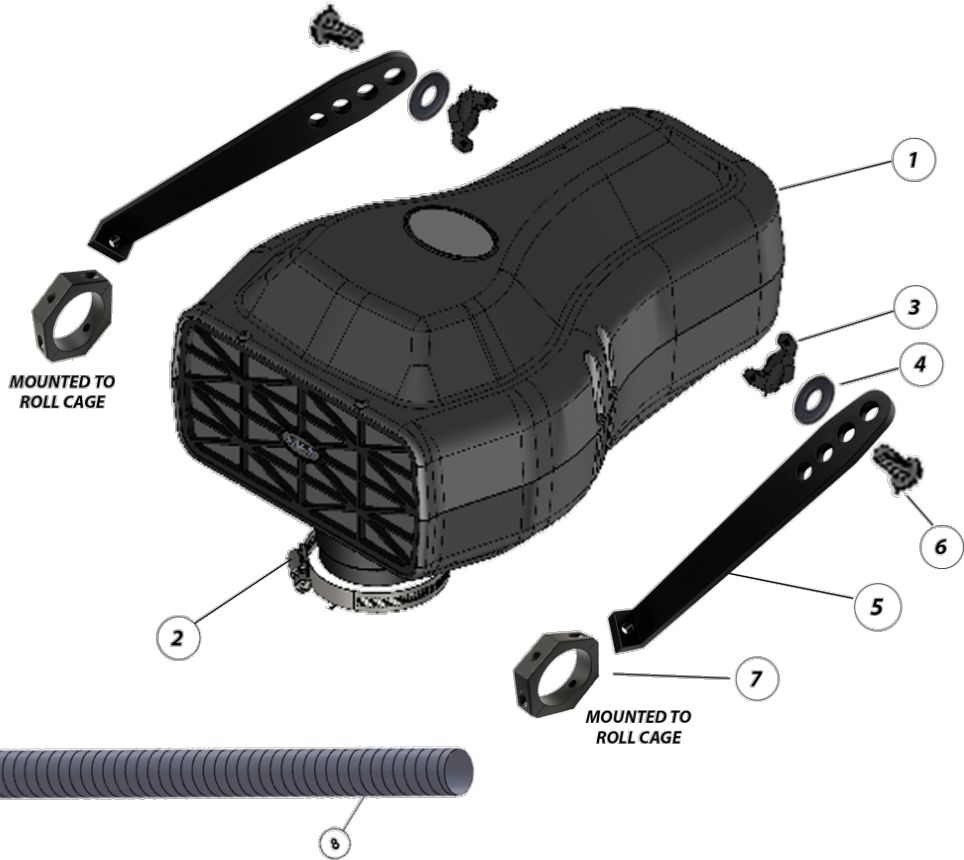
STEP 5. Measure Flexible Hose Duct (8) to Particle Separator (1) inlet, if necessary, cut excess off the Flexible Duct (8) with scissors and wire cutters for better fit. NOTE: If cut, pull 1" of internal wire out from the top of the hose to ensure a tight fit around the Particle Separator (1). Insert the Hose Clamp (2) over the end of the Flexible Duct Hose (8) that is sticking out of the air intake panel. Place the Flexible Duct Hose (8) over the Particle Separator (1) intake and tighten Hose Clamp (2) with a screwdriver. Once completed, replace air intake side cover, panel behind passenger seat, and the passenger seat back onto the vehicle.





PARTICLE SEPARATOR X2 P/N: 22-7001 INSTALLATION INSTRUCTIONS (CONTINUED)

EXPLODED VIEW / PARTS LIST



ITEM	QTY	DESCRIPTION	PART NUMBER
1	1	PARTICLE SEPARATOR	KW9728-01
2	2	HOSE CLAMP	KW9728-02
3	2	MOUNTING BRACKET	KW9728-03
4	2	WASHER, 5/16 NORD-LOCK	KW9728-04
5	2	BRACKET, METAL	KW9728-05

ITEM	QTY	DESCRIPTION	PART NUMBER
6	3	BOLTS 5/16-18 x 5/8	KW9728-06
7	2	CLAMP, ROLL BAR	KW9728-07
8	1	FLEXIBLE DUCTHOSE, 3.25" DIA	KW9728-09
9	1	DUCT ADAPTER	KW9728-08

SIDE NOTE

KWT recommends that you apply a layer of waterproof grease, such as made by Bel-Ray or Super Lube, on the inside flange of the stock air filter to keep dust from bypassing the seal.



PARTICLE SEPARATOR X2 P/N: 22-7001 INSTALLATION INSTRUCTIONS (CONTINUED)

ONGOING MAINTENANCE

Your KWT Particle Separator requires very little if any maintenance depending on where you drive. Always check to make sure the opening in front of the Particle Separator is not blocked by mud or other debris each time you exit the UTV.

To clean your Particle Separator, review the cleaning instructions below. The dirt collection chamber should be emptied monthly. Intervals may increase as you increase riding miles.

CLEANING INSTRUCTIONS

To clean the KWT Particle Separator push in the three buttons located on the bottom to release the dirt collection tray. Empty the dirt by taping it out. Prior to reinstalling the dirt tray, press and engage all 3 buttons. Install the tray in place starting from the back. Squeeze the dirt collection chamber onto the filter until hearing an audible “click”. Repeat for the two front buttons. To ensure the dirt collection tray is securely fastened, gently pull down on each of the three corners to make sure no gaps are visible.

