



# PARTICLE SEPARATOR X2

[www.kwtfilters.com](http://www.kwtfilters.com)

**P/N: 22-1004**

Approx. Install Time: 0 Hrs 45 Min

## INSTALLATION INSTRUCTIONS

### VEHICLE TYPE

Year: 2022  
Make: Polaris  
Model: RZR TURBO R  
Engine: 1000cc and 1000cc Turbo

### TOOLS REQUIRED

- 3/16" Allen Wrench
- 1/8" Allen Wrench
- Phillips Screwdriver
- Wire Cutters/Scissors
- 4" Diameter Hole Saw or Dremel Tool

### BEFORE YOU START

Please read the entire installation manual before proceeding.  
Ensure all part items listed on page 4 exist  
If you are missing any of the components, call our customer support at 888-340-5055.  
Do not work on the vehicle while the engine is running or hot.  
Ensure vehicle is turned off and brake is on.

### BOLT TORQUE GUIDE

Size	Torque
1/8"	25.8in-lbs
3/16"	34.5in-lbs

### WARNING:

**THIS EQUIPMENT SHOULD BE INSTALLED, ADJUSTED, AND SERVICED BY PERSONNEL FAMILIAR WITH THE CONSTRUCTION AND OPERATION OF THIS TYPE OF EQUIPMENT AND THE HAZARDS INVOLVED. FAILURE TO OBSERVE THIS PRECAUTION COULD RESULT IN SEVERE INJURY. READ THIS MANUAL THOROUGHLY AND MAKE SURE YOU UNDERSTAND THE PROCEDURES BEFORE YOU ATTEMPT TO OPERATE THIS EQUIPMENT. THE PURPOSE OF THIS MANUAL IS TO PROVIDE YOU WITH INFORMATION NECESSARY TO SAFELY OPERATE, MAINTAIN, AND TROUBLESHOOT THIS EQUIPMENT. DO NOT USE THIS EQUIPMENT FOR ANY REASON OTHER THAN ITS INTENDED PURPOSE. FAILURE TO FOLLOW THESE INSTRUCTIONS WILL VOID ANY WARRANTY. KEEP THIS MANUAL FOR FUTURE REFERENCE. THE INFORMATION CONTAINED IN THIS MANUAL IS SUBJECT TO CHANGE WITHOUT NOTICE.**



# PARTICLE SEPARATOR X2 P/N: 22-1004

## INSTALLATION INSTRUCTIONS

SEE EXPLODED VIEW ON PAGE 4 FOR ASSOCIATED ITEM PART NUMBERS

**STEP 1.** The preferred placement for the Particle Separator (1) is nearest to the engine intake on the right passenger side of the vehicle, utilizing the diagonal bar of the roll cage. The Universal Mount is our recommended installation for this vehicle. Planning ahead the placement of your KWT particle separator will save you time during the install. Our clamps are adaptable enough to work around any additional accessories you may have on the roll cage, in addition to the particle separator.



**STEP 2.** Use 1/8" allen wrench to unscrew the side bolts from Roll Bar Clamp (7). Install the Clamp onto the side diagonal roll bar. Do not fully tighten, the clamp should be able to rotate slightly and will be fully tightened later in assembly. Mount the Hanger Bracket (5) onto the Roll Bar Clamp (7) in the 3<sup>rd</sup> hole closest to the bend with the Hex head bolt (6) provided and tighten. Make sure to fully tighten the Hanger Bracket onto the roll bar clamp prior to installing the Particle Separator, it will be difficult to adjust after the filter is installed.



**STEP 3.** Install Particle Separator (1) onto the Hanger Bracket (5) on each side using Hex Head Screw (6) and Lock Washer (4). The lock washer **MUST** be between the Hanger Bracket (5) and Particle Separator Side Mount (3). If the washer is placed under the head of the Bolt (6) the Particle Separator will rotate freely and may cause damage.







# PARTICLE SEPARATOR X2 P/N: 22-1004 INSTALLATION INSTRUCTIONS (CONTINUED)

**STEP 4.** Locate the stock engine Air Filter Box (Forward of Engine) and flexible rubber Intake Hose located on the on the passenger side of the Air Filter Box. Using a screwdriver (or equivalent tool) loosen the Hose Clamp holding the OEM flexible rubber Intake Hose (shown below) and remove. You can discard the stock intake hose.



**STEP 5.** Insert the KWT Flexible Hose Duct (8) onto the stock RZR Filter Air Box intake and tighten the Hose Clamp (2) as shown below.

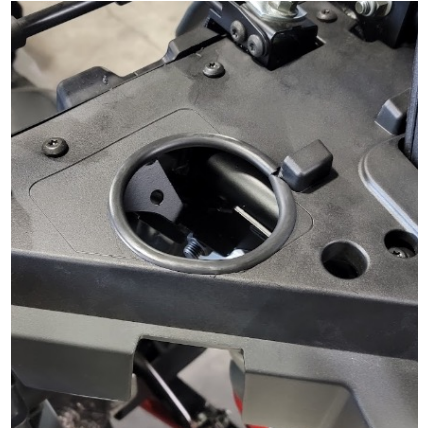
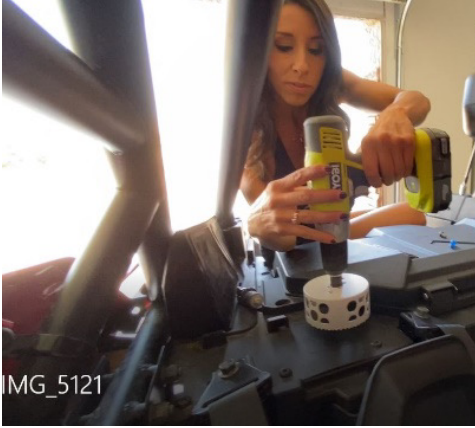






# PARTICLE SEPARATOR X2 P/N: 22-1004 INSTALLATION INSTRUCTIONS (CONTINUED)

**STEP 6.** Measure a hole that will align with the air intake on the panel behind the passenger seat. Cut a hole using a 4" diameter hole saw or trim using a Dremel. Install included rubber stripping around the hole in the plastic panel.



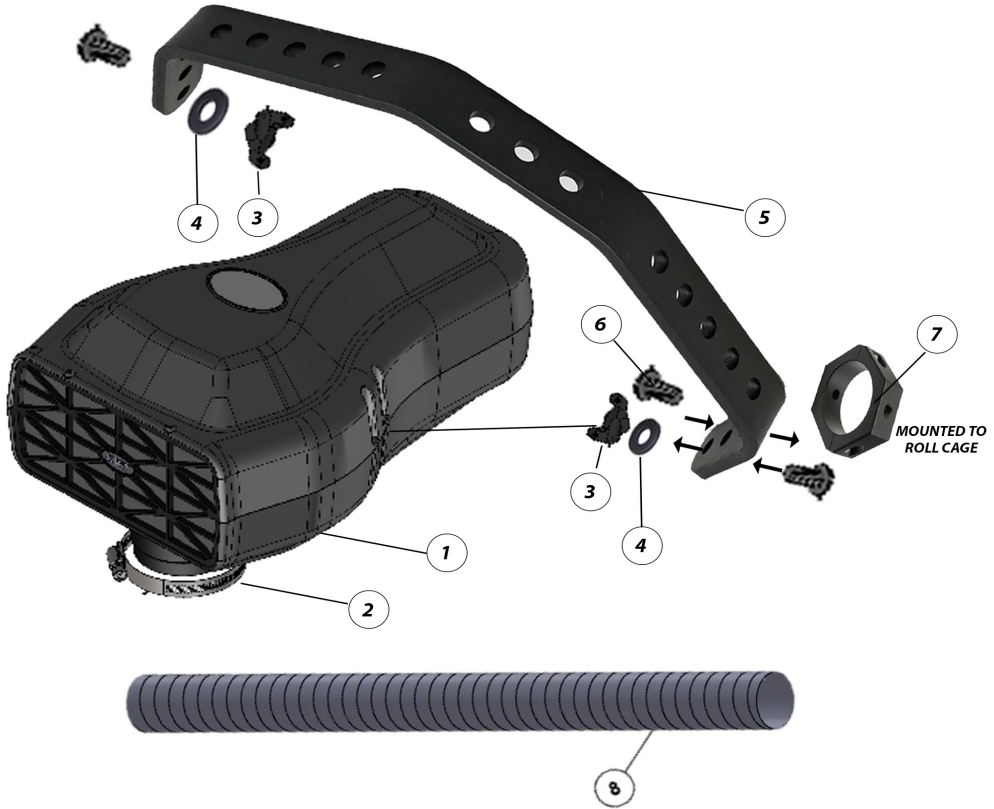
**STEP 7.** Insert the other end of the Flexible Duct (8) through the panel. Measure the ducting to the Particle Separator. If necessary, cut excess length from the Flexible Duct Hose (8) with wire cutters and scissors for a better fit. NOTE: If cut, pull 1" of internal wire out from the top of the hose to ensure a secure fit around the Particle Separator (1). Insert the Hose Clamp (2) over the end of the Flexible Duct Hose (8) that is sticking out of the Air Intake cover. Place the Flexible Duct Hose (8) over the Particle Separator (1) intake and tighten with a screwdriver.





# PARTICLE SEPARATOR X2 P/N: 22-1004 INSTALLATION INSTRUCTIONS (CONTINUED)

## EXPLODED VIEW / PARTS LIST



ITEM	QTY	DESCRIPTION	PART NUMBER
1	1	PARTICLE SEPARATOR	KW9728-01
2	2	HOSE CLAMP	KW9728-02
3	2	SIDE MOUNT	KW9728-03
4	2	WASHER, 5/16 NORD-LOCK	KW9728-04
5	2	HANGER BRACKET	KW9728-05

ITEM	QTY	DESCRIPTION	PART NUMBER
6	2	SCREW 5/16-18x5/8	KW9728-06
7	2	CLAMP, ROLL BAR	KW9728-07a
8	1	FLEXIBLE DUCT HOSE 3.25" DIA	KW9728-09

### SIDE NOTE

KWT recommends that you apply a layer of waterproof grease, such as made by Bel-Ray or Super Lube, on the inside flange of the stock Air Filter Box to keep dust from bypassing the O-ring Seal.



# PARTICLE SEPARATOR X2 P/N: 22-1004 INSTALLATION INSTRUCTIONS (CONTINUED)

## ONGOING MAINTENANCE

Your KWT Particle Separator requires very little if any maintenance depending on where you drive. Always check to make sure the opening in front of the Particle Separator is not blocked by mud or other debris each time you exit the UTV.

To clean your Particle Separator, review the cleaning instructions below. The dirt collection chamber should be emptied monthly. Intervals may increase as you increase riding miles.

## CLEANING INSTRUCTIONS

To clean the KWT Particle Separator push in the three buttons located on the bottom to release the dirt collection tray. Empty the dirt by taping it out. Prior to reinstalling the dirt tray, press and engage all 3 buttons. Install the tray in place starting from the back. Squeeze the dirt collection chamber onto the filter until hearing an audible “click”. Repeat for the two front buttons. To ensure the dirt collection tray is securely fastened, gently pull down on each of the three corners to make sure no gaps are visible.

