



PARTICLE SEPARATOR X2

www.kwtfilters.com

P/N: 20-3000

Approx. Install Time: 60 Min

INSTALLATION INSTRUCTIONS

VEHICLE TYPE

Year: **2020-2023**
Make: **Honda**
Model: **Talon**
Engine: **1000**

TOOLS REQUIRED

- 3/16" Allen Wrench
- 1/8" Allen Wrench
- Phillips Screwdriver
- Wire Cutters/Scissors
- 4" Diameter Hole Saw and Drill

BEFORE YOU START

Please read the entire installation manual before proceeding.
Ensure all part items listed on page 4 exist
If you are missing any of the components, call our customer support at 888-340-5055.
Do not work on the vehicle while the engine is running or hot.
Ensure vehicle is turned off and brake is on.

BOLT TORQUE GUIDE

Size	Torque
5/16"	25.8in-lbs
5/32"	34.5in-lbs

**Recommend using Loctite on all bolts during assembly*

WARNING:

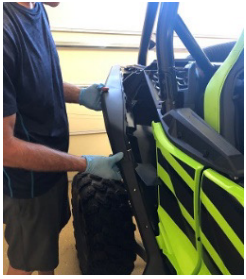
THIS EQUIPMENT SHOULD BE INSTALLED, ADJUSTED, AND SERVICED BY PERSONNEL FAMILIAR WITH THE CONSTRUCTION AND OPERATION OF THIS TYPE OF EQUIPMENT AND THE HAZARDS INVOLVED. FAILURE TO OBSERVE THIS PRECAUTION COULD RESULT IN SEVERE INJURY. READ THIS MANUAL THOROUGHLY AND MAKE SURE YOU UNDERSTAND THE PROCEDURES BEFORE YOU ATTEMPT TO OPERATE THIS EQUIPMENT. THE PURPOSE OF THIS MANUAL IS TO PROVIDE YOU WITH INFORMATION NECESSARY TO SAFELY OPERATE, MAINTAIN, AND TROUBLESHOOT THIS EQUIPMENT. DO NOT USE THIS EQUIPMENT FOR ANY REASON OTHER THAN ITS INTENDED PURPOSE. FAILURE TO FOLLOW THESE INSTRUCTIONS WILL VOID ANY WARRANTY. KEEP THIS MANUAL FOR FUTURE REFERENCE. THE INFORMATION CONTAINED IN THIS MANUAL IS SUBJECT TO CHANGE WITHOUT NOTICE.



PARTICLE SEPARATOR X2 P/N: 20-3000

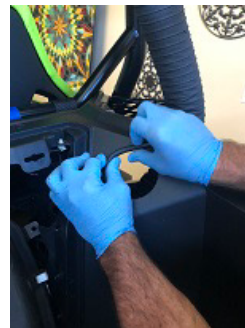
INSTALLATION INSTRUCTIONS

STEP 1. The preferred placement for the Particle Separator (1) is nearest to the engine intake and on the bottom bar of the roll cage. Make sure you have enough room to fit the clamps and particle separator on the roll cage without any interference. Planning will save you time during the install. Roll bar clamps (7) are adaptable enough to work around any additional accessories you may have on the roll cage in addition to the particle separator. Prior to installing the Particle Separator (1), remove the plastic body parts, air filter compartment cover and stock air intake from the vehicle.

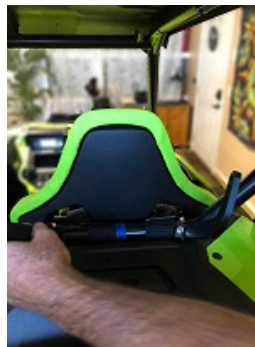


SEE EXPLODED VIEW ON PAGE 4 FOR ASSOCIATED ITEM PART NUMBERS

STEP 2. Insert the Duct Adapter (9) inside the vehicle's air intake, place the Hose Clamp (2) over the end of the Flexible Hose Duct (8). Insert Flexible Hose Duct (8) over the Duct Adapter (9) and tight Hose Clamp (2) with a Phillips screwdriver. Measure the center of the panel adjacent to the stock air filter compartment. Cut a hole using a 4" diameter hole saw. Insert included rubber stripping around the hole. Insert Flexible Hose Duct (9) from the air intake area through the panel hole.



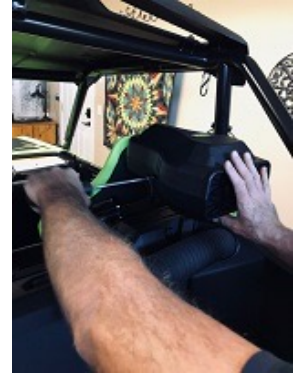
STEP 3. Put the air filter box cover back into place. Use 1/8" allen wrench to unscrew bolts from Roll Bar Clamps (7). Install Roll Bar Clamps (7) onto roll bar being. Do not fully tighten, clamps should be able to rotate slightly and will be fully tightened later in assembly. Place Metal Brackets (5) onto the on the Roll Bar Clamps (7) and tighten with an Allen wrench. After Roll Bar Clamps (7) and Metal Bracket (5) are installed, measure gap between the Metal Brackets (5) and set at 9.5 inches and tighten Roll Bar Clamps (7) and Metal Brackets (5) per the torque guide on page 1.



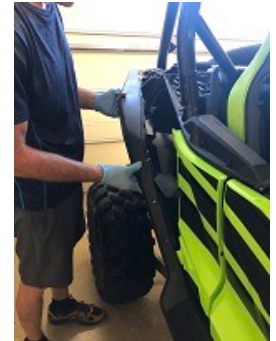
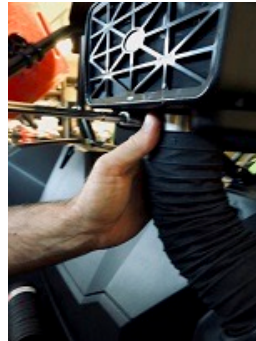
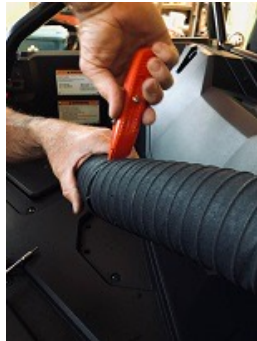


PARTICLE SEPARATOR X2 P/N: 20-3000 INSTALLATION INSTRUCTIONS (CONTINUED)

STEP 4. Install Particle Separator (1) onto the Metal Brackets (5) on the left and right-side using Screw (6) and Washer (4) and a 3/16" Allen wrench to tighten. Washer **MUST** be between the Metal Bracket (5) and Particle Separator (1). If the washer is placed under the head of the Screw (6) the Particle Separator will rotate freely and may cause damage.



STEP 5. Measure Flexible Duct Hose (8) to Particle Separator (1) inlet, if necessary, cut excess hose off the Flexible Duct (8) with wire cutters and scissors. NOTE: Pull 1" of internal wire out from the top of the hose to ensure a tight fit around the Particle Separator (1). Insert the Hose Clamp (2) over the end of the Flexible Duct Hose (8) that is sticking out of the air intake panel. Place the Flexible Duct Hose (8) over the Particle Separator (1) intake and tighten Hose Clamp (2) with a Philips screwdriver. Once completed replace all side plastics back onto the vehicle.



Completed Install Pictures

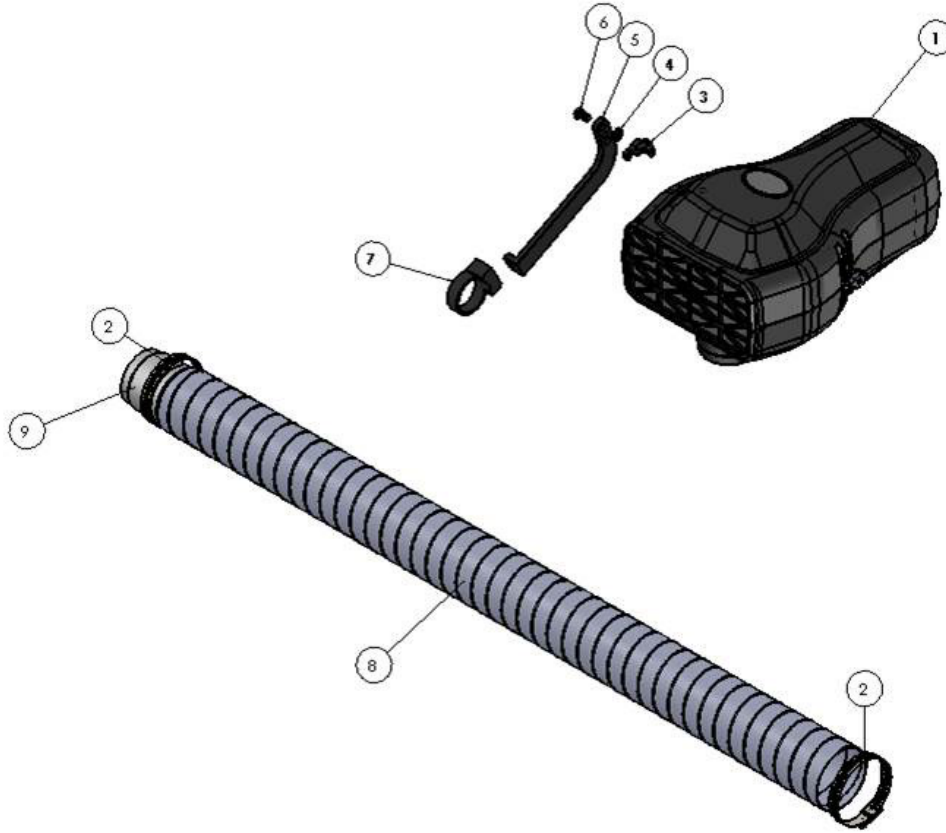




PARTICLE SEPARATOR X2 P/N: 20-3000

INSTALLATION INSTRUCTIONS (CONTINUED)

EXPLODED VIEW / PARTS LIST



ITEM	QTY	DESCRIPTION	PART NUMBER
1	1	PARTICLE SEPARATOR	KW9728-01
2	2	HOSE CLAMP	KW9728-02
3	2	MOUNTING BRACKET	KW9728-03
4	2	WASHER, 5/16 NORD-LOCK	KW9728-04
5	2	BRACKET, METAL	KW9728-05

ITEM	QTY	DESCRIPTION	PART NUMBER
6	2	SCREW 5/16-18 x 5/8	KW9728-06
7	2	CLAMP, ROLL BAR	KW9728-07
8	1	FLEXIBLE DUCTHOSE, 3.25" DIA	KW9728-09
9	1	DUCT ADAPTER	KW9728-08

SIDE NOTE

KWT recommends that you apply a layer of waterproof grease, such as made by Bel-Ray or Super Lube, on the inside flange of the stock air filter to keep dust from bypassing the seal.



PARTICLE SEPARATOR X2 P/N: 20-3000 INSTALLATION INSTRUCTIONS (CONTINUED)

ONGOING MAINTENANCE

Your KWT Particle Separator requires very little if any maintenance depending on where you drive. Always check to make sure the opening in front of the Particle Separator is not blocked by mud or other debris each time you exit the UTV.

To clean your Particle Separator, review the cleaning instructions below. The dirt collection chamber should be emptied monthly. Intervals may increase as you increase riding miles.

CLEANING INSTRUCTIONS

To clean the KWT Particle Separator push in the three buttons located on the bottom to release the dirt collection tray. Empty the dirt by taping it out. Prior to reinstalling the dirt tray, press and engage all 3 buttons. Install the tray in place starting from the back. Squeeze the dirt collection chamber onto the filter until hearing an audible “click”. Repeat for the two front buttons. To ensure the dirt collection tray is securely fastened, gently pull down on each of the three corners to make sure no gaps are visible.

