



PARTICLE SEPARATOR X2

www.kwtfilters.com

P/N: 20-2000

Approx. Install Time: 0 Hrs 45 Min

INSTALLATION INSTRUCTIONS

VEHICLE TYPE

Year: **2015 - 2023**
Make: **CAM AM**
Model: **Maverick X3**
Engine: **1000cc and Turbo**

TOOLS REQUIRED

- 3/16" Allen Wrench
- 1/8" Allen Wrench
- Phillips Screwdriver
- Wire Cutters/scissors
- 4" Diameter Hole Saw or Dremel Tool

BEFORE YOU START

Please read the entire installation manual before proceeding.
Ensure all part items listed on page 4 exist
If you are missing any of the components, call our customer support at 888-340-5055.
Do not work on the vehicle while the engine is running or hot.
Ensure vehicle is turned off and brake is on.

BOLT TORQUE GUIDE

Size	Torque
5/16"	25.8in-lbs
5/32"	34.5in-lbs

**Recommend using Loctite on all bolts during assembly*

WARNING:

THIS EQUIPMENT SHOULD BE INSTALLED, ADJUSTED, AND SERVICED BY PERSONNEL FAMILIAR WITH THE CONSTRUCTION AND OPERATION OF THIS TYPE OF EQUIPMENT AND THE HAZARDS INVOLVED. FAILURE TO OBSERVE THIS PRECAUTION COULD RESULT IN SEVERE INJURY. READ THIS MANUAL THOROUGHLY AND MAKE SURE YOU UNDERSTAND THE PROCEDURES BEFORE YOU ATTEMPT TO OPERATE THIS EQUIPMENT. THE PURPOSE OF THIS MANUAL IS TO PROVIDE YOU WITH INFORMATION NECESSARY TO SAFELY OPERATE, MAINTAIN, AND TROUBLESHOOT THIS EQUIPMENT. DO NOT USE THIS EQUIPMENT FOR ANY REASON OTHER THAN ITS INTENDED PURPOSE. FAILURE TO FOLLOW THESE INSTRUCTIONS WILL VOID ANY WARRANTY. KEEP THIS MANUAL FOR FUTURE REFERENCE. THE INFORMATION CONTAINED IN THIS MANUAL IS SUBJECT TO CHANGE WITHOUT NOTICE.



PARTICLE SEPARATOR X2 P/N: 20-2000 INSTALLATION INSTRUCTIONS

STEP 1. The preferred placement for the Particle Separator (1) is nearest to the engine intake and on the bottom bar of the roll cage. Make sure you have enough room to fit the clamps and particle separator on the roll cage without any interference. Planning ahead will save you time during the install. Our clamps are adaptable enough to work around any additional accessories you may have on the roll cage in addition to the particle separator.

Prior to installing the Particle Separator (1), remove the stock Air Intake Cover from the vehicle.



SEE EXPLODED VIEW ON PAGE 4 FOR ASSOCIATED ITEM PART NUMBERS

STEP 2. Use 1/8" Allen wrench to unscrew bolts from the Roll Bar Clamp (7). Install Clamp onto the roll bar. In some instances, you may need to notch out the plastic under the clamp to fit the clamp securely. Do not fully tighten Clamps, they should rotate freely and will be fully tightened later in assembly. Place Metal Bracket (5) onto the Roll Bar Clamp (7) and use 3/16" Allen wrench to secure bolts.



STEP 3. After Roll Bar Clamps (7) are installed, measure gap between the Metal Brackets (5) and set at 9.5 inches and tighten bolts per the torque guide on page 1. Insert the Duct Adapter (8) inside the vehicles air intake prefilter. This is meant to be a tight fit, so press the Duct Adapter (8) through the stock prefilter until only about an inch is showing at the top. Then install the vehicle air intake prefilter back into the vehicle. Place a Hose Clamp (2) over the Flexible Hose Duct (9) and insert onto the Duct Adapter (8) and tighten with Philips screwdriver.





PARTICLE SEPARATOR X2 P/N: 20-2000

INSTALLATION INSTRUCTIONS (CONTINUED)

STEP 4. Take the stock Air Intake Cover and measure the center between the two air intake cover handles and with the top of the hole being tangent to the top edge of the Air Intake Cover. Cut a 4" diameter hole using a hole saw or trim using a dremel. Notch out the remaining edges of the plastic to make a cul-de-sac space as shown below. Install included rubber stripping around the hole on the Air Intake Cover. Insert Flexible Hose Duct (9) through the Air Intake Cover hole and install on the vehicle.



STEP 5. Install Particle Separator (1) onto the Metal Brackets (5) on the left and right-side using Bolt (6) and Washer (4) and a 3/16" Allen wrench to tighten per torque guide on page 1. Washer **MUST** be between the Metal Bracket (5) and Particle Separator (1). If the washer is placed under the head of the Bolt (6) the Particle Separator will rotate freely and may cause damage.



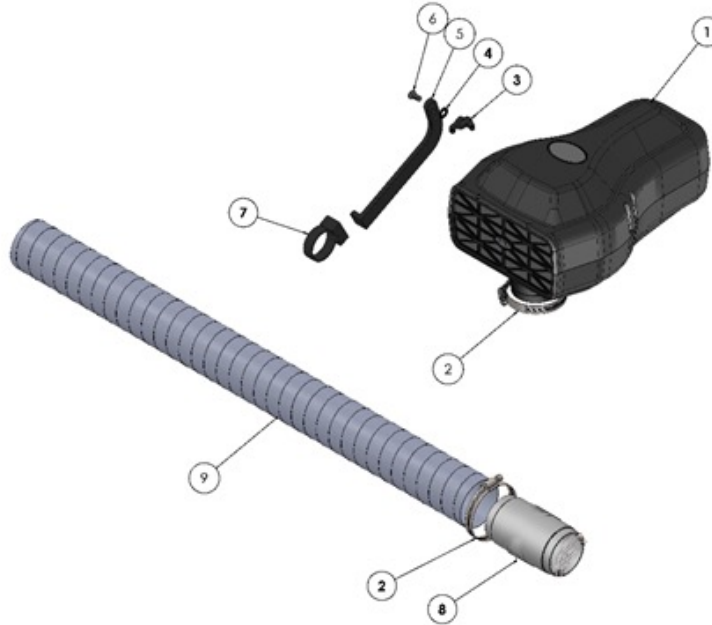
STEP 6. If necessary, cut excess off the Flexible Duct (9) with wire cutters and scissors for a better fit. NOTE: Pull 1" of internal wire out from the top of the hose to ensure a tight fit around the Particle Separator (1). Insert the Hose Clamp (2) over the end of the Flexible Duct (9) that is sticking out of the Air Intake cover. Place the Flexible Duct (9) over the Particle Separator (1) intake and tighten with a Philips screwdriver.





PARTICLE SEPARATOR X2 P/N: 20-2000 INSTALLATION INSTRUCTIONS (CONTINUED)

EXPLODED VIEW / PARTS LIST



ITEM	QTY	DESCRIPTION	PART NUMBER
1	1	PARTICLE SEPARATOR	KW9728-01
2	2	HOSE CLAMP	KW9728-02
3	2	MOUNTING BRACKET (Pre-install on Item 1)	KW9728-03
4	2	WASHER, 5/16 NORD-LOCK	KW9728-04
5	2	BRACKET, METAL	KW9728-05

ITEM	QTY	DESCRIPTION	PART NUMBER
6	2	BOLTS 5/16-18 x 5/8	KW9728-06
7	2	CLAMP, ROLL BAR	KW9728-07a
8	1	DUCT ADAPTER (no flange)	KW9728-08
9	1	FLEXIBLE DUCT HOSE	KW9728-09

SIDE NOTE

KWT recommends that you apply a layer of waterproof grease, such as made by Bel-Ray or Super Lube, on the inside flange of the stock air filter to keep dust from bypassing the seal.



PARTICLE SEPARATOR X2 P/N: 20-2000 INSTALLATION INSTRUCTIONS (CONTINUED)

ONGOING MAINTENANCE

Your KWT Particle Separator requires very little if any maintenance depending on where you drive. Always check to make sure the opening in front of the Particle Separator is not blocked by mud or other debris each time you exit the UTV.

To clean your Particle Separator, review the cleaning instructions below. The dirt collection chamber should be emptied monthly. Intervals may increase as you increase riding miles.

CLEANING INSTRUCTIONS

To clean the KWT Particle Separator push in the three buttons located on the bottom to release the dirt collection tray. Empty the dirt by taping it out. Prior to reinstalling the dirt tray, press and engage all 3 buttons. Install the tray in place starting from the back. Squeeze the dirt collection chamber onto the filter until hearing an audible “click”. Repeat for the two front buttons. To ensure the dirt collection tray is securely fastened, gently pull down on each of the three corners to make sure no gaps are visible.

