



PARTICLE SEPARATOR X2

www.kwtfilters.com

P/N: 20-1003

Approx. Install Time: 0 Hrs 30 Min

INSTALLATION INSTRUCTIONS

VEHICLE TYPE

Year: **2020**
Make: **Polaris**
Model: **RZR XP PRO**
Engine: **1000cc and 1000cc Turbo**

TOOLS REQUIRED

- 3/16" Hex Key (Allen Wrench)
- 1/8" Hex Key (Allen Wrench)
- Phillips Screwdriver
- Wire Cutters
- 3.75" Diameter Hole Saw or Dremel Tool

BEFORE YOU START

Please read the entire installation manual before proceeding.
Ensure all part items listed on page 4 exist
If you are missing any of the components, call our customer support at 888-340-5055.
Do not work on the vehicle while the engine is running or hot.
Ensure vehicle is turned off and brake is on.

WARNING:

THIS EQUIPMENT SHOULD BE INSTALLED, ADJUSTED, AND SERVICED BY PERSONNEL FAMILIAR WITH THE CONSTRUCTION AND OPERATION OF THIS TYPE OF EQUIPMENT AND THE HAZARDS INVOLVED. FAILURE TO OBSERVE THIS PRECAUTION COULD RESULT IN SEVERE INJURY. READ THIS MANUAL THOROUGHLY AND MAKE SURE YOU UNDERSTAND THE PROCEDURES BEFORE YOU ATTEMPT TO OPERATE THIS EQUIPMENT. THE PURPOSE OF THIS MANUAL IS TO PROVIDE YOU WITH INFORMATION NECESSARY TO SAFELY OPERATE, MAINTAIN, AND TROUBLESHOOT THIS EQUIPMENT. DO NOT USE THIS EQUIPMENT FOR ANY REASON OTHER THAN ITS INTENDED PURPOSE. FAILURE TO FOLLOW THESE INSTRUCTIONS WILL VOID ANY WARRANTY. KEEP THIS MANUAL FOR FUTURE REFERENCE. THE INFORMATION CONTAINED IN THIS MANUAL IS SUBJECT TO CHANGE WITHOUT NOTICE.



PARTICLE SEPARATOR X2 P/N: 20-1003

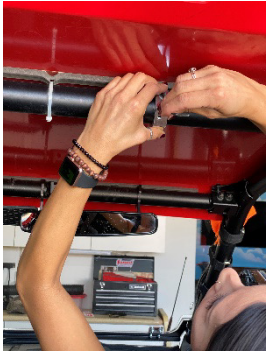
INSTALLATION INSTRUCTIONS

SEE EXPLODED VIEW ON PAGE 4 FOR ASSOCIATED ITEM PART NUMBERS

STEP 1. The preferred placement for the Particle Separator (1) is nearest to the engine intake and on the top bar or the side of the roll cage. Make sure you have enough room to fit the clamps and particle separator on the roll cage without any interference. Planning ahead will save you time during the install. Our clamps are adaptable enough to work around any additional accessories you may have on the roll cage in addition to the particle separator.



STEP 2. Use 1/8" allen wrench to unscrew bolts from Roll Bar Clamps (7). Install Clamps onto the top roll bar. Do not fully tighten, clamps should be able to rotate slightly and will be fully tightened later in assembly. Place Metal Brackets (5) onto the on the Roll Bar Clamps (7) and tighten with an allen wrench. After Roll Bar Clamps (7) and Metal Bracket (5) are installed, measure the gap between the Clamps (7) and set the distance at 8 ¼ inches. Tighten the Roll Bar Clamps (7) and Metal Brackets (5).



STEP 3. Install Particle Separator (1) onto the Metal Brackets (5) on the left and right-side using Bolt (6) and Washer (4) and a 3/16" allen wrench to tighten. The washer **MUST** be between the Metal Bracket (5) and Particle Separator (1). If the washer is placed under the head of the Bolt (6) the Particle Separator will rotate freely and may cause damage.





PARTICLE SEPARATOR X2 P/N: 20-1003 INSTALLATION INSTRUCTIONS (CONTINUED)

STEP 4. Locate the stock engine Air Filter Box (Forward of Engine) and flexible rubber Intake Hose located on the passenger side (right side) of the Air Filter Box. Using a Screwdriver (or equivalent tool) loosen the Hose Clamp holding the OEM flexible rubber Intake Hose (shown below right) and remove.



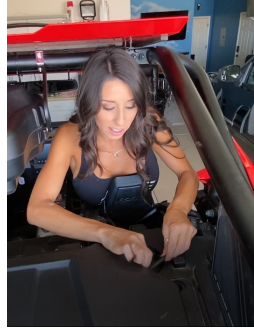
STEP 5. Insert the Flexible Hose Duct (8) onto the stock RZR Filter Air Box intake side and tighten the Hose Clamp (2) as shown below.





PARTICLE SEPARATOR X2 P/N: 20-1003 INSTALLATION INSTRUCTIONS (CONTINUED)

STEP 6. Measure a hole that will align with the air intake on the panel behind the passenger seat. Cut a hole using a 4" diameter hole saw or trim using a dremel. Install included rubber stripping around the hole in the plastic panel. Insert the Flexible Duct (8) through the panel and insert a Hose Clamp (2) over the end of the Flexible Hose Duct (9)



STEP 7. If necessary, cut excess off the Flexible Duct Hose (8) with wire cutters for better fit. Insert the Hose Clamp (2) over the end of the Flexible Duct Hose (8) that is sticking out of the Air Intake cover. Place the Flexible Duct Hose (8) over the Particle Separator (1) intake and tighten with a Philips screwdriver.





PARTICLE SEPARATOR X2 P/N: 20-1003 INSTALLATION INSTRUCTIONS (CONTINUED)

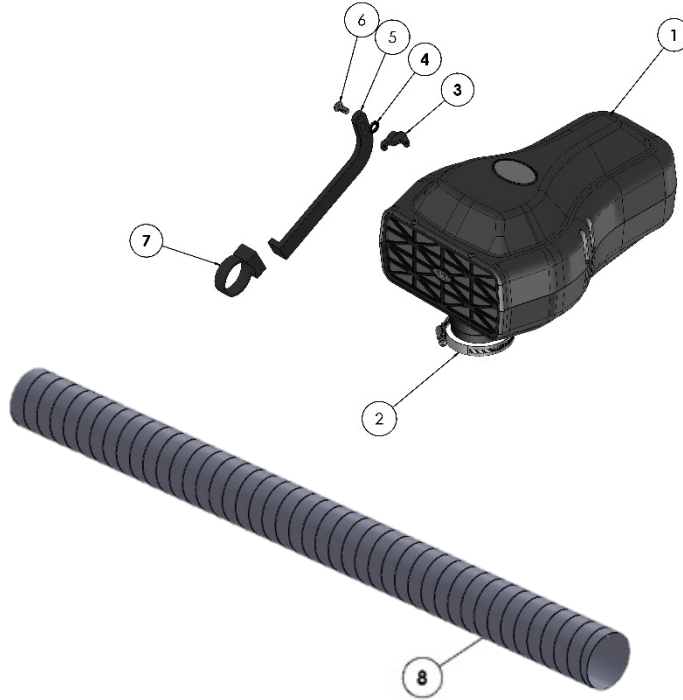
STEP 1 – ULTIMATE PRO SIDE MOUNT. Use 1/8" allen wrench to unscrew bolts from Roll Bar Clamp (7). Install Clamp onto the top roll bar. Do not fully tighten, clamps should be able to rotate slightly and will be fully tightened later in assembly. Place Metal Brackets (5) onto the on the Roll Bar Clamps (7) and tighten with an allen wrench. After Roll Bar Clamps (7) and Metal Bracket (5) are installed, measure the gap between the Clamps (7) and set the distance at 8 ¼ inches. Tighten the Roll Bar Clamps (7) and Metal Brackets (5).





PARTICLE SEPARATOR X2 P/N: 20-1003 INSTALLATION INSTRUCTIONS (CONTINUED)

EXPLODED VIEW / PARTS LIST



ITEM	QTY	DESCRIPTION	PART NUMBER	ITEM	QTY	DESCRIPTION	PART NUMBER
1	1	PARTICLE SEPARATOR	KW9728-01	6	2	SCREW 5/16-18x5/8	KW9728-06
2	2	HOSE CLAMP	KW9728-02	7	2	CLAMP, ROLL BAR	KW9728-07a
3	2	MOUNTING BRACKET	KW9728-03	8	1	FLEXIBLE DUCT HOSE 3.25" DIA	KW9728-09
4	2	WASHER, 5/16 NORD-LOCK	KW9728-04				
5	2	BRACKET, METAL	KW9728-05				

SIDE NOTE

KWT recommends that you apply a layer of waterproof grease, such as made by Bel-Ray or Super Lube, on the inside flange of the stock Air Filter Box to keep dust from bypassing the O-ring Seal.



PARTICLE SEPARATOR X2 P/N: 20-1003 INSTALLATION INSTRUCTIONS (CONTINUED)

ONGOING MAINTENANCE

Your Particle Separator requires very little if any maintenance depending on where you drive; however, you should check to make sure the opening on front of the Particle Separator is not blocked by mud or other debris each time you exit the UTV. To clean your Particle Separator, review the cleaning instructions below. Cleaning should take place if the clear Sight Glass located on the underside of the Separator is showing dirt over the entire clear portion of the Sight Glass.

CLEANING INSTRUCTIONS

To clean the KWT Particle Separator push in the three buttons located on the bottom to release the dirt collection tray. Empty the dirt by taping it out. Install the tray in place starting from the back. Squeeze the dirt collection chamber onto the filter until hearing an audible click. Repeat for the two front buttons. To ensure the dirt collection tray is securely fastened, gently pull down on each of the three corners to make sure no gaps are visible.

