



PARTICLE SEPARATOR X2

www.kwtfilters.com

P/N: 20-1000/01

Approx. Install Time: 0 Hrs 30 Min

INSTALLATION INSTRUCTIONS

VEHICLE TYPE

Year: **2014 - 2019**
Make: **Polaris**
Model: **RZR**
Engine: **1000cc and 1000cc Turbo**

TOOLS REQUIRED

- 3/16" Hex Key (Allen Wrench)
- 1/8" Hex Key (Allen Wrench)
- Phillips Screwdriver
- Wire Cutters
- 3.75" Diameter Hole Saw or Dremel Tool

BEFORE YOU START

Please read the entire installation manual before proceeding.
Ensure all part items listed on page 4 exist
If you are missing any of the components, call our customer support at 888-340-5055.
Do not work on the vehicle while the engine is running or hot.
Ensure vehicle is turned off and brake is on.

WARNING:

THIS EQUIPMENT SHOULD BE INSTALLED, ADJUSTED, AND SERVICED BY PERSONNEL FAMILIAR WITH THE CONSTRUCTION AND OPERATION OF THIS TYPE OF EQUIPMENT AND THE HAZARDS INVOLVED. FAILURE TO OBSERVE THIS PRECAUTION COULD RESULT IN SEVERE INJURY. READ THIS MANUAL THOROUGHLY AND MAKE SURE YOU UNDERSTAND THE PROCEDURES BEFORE YOU ATTEMPT TO OPERATE THIS EQUIPMENT. THE PURPOSE OF THIS MANUAL IS TO PROVIDE YOU WITH INFORMATION NECESSARY TO SAFELY OPERATE, MAINTAIN, AND TROUBLESHOOT THIS EQUIPMENT. DO NOT USE THIS EQUIPMENT FOR ANY REASON OTHER THAN ITS INTENDED PURPOSE. FAILURE TO FOLLOW THESE INSTRUCTIONS WILL VOID ANY WARRANTY. KEEP THIS MANUAL FOR FUTURE REFERENCE. THE INFORMATION CONTAINED IN THIS MANUAL IS SUBJECT TO CHANGE WITHOUT NOTICE.

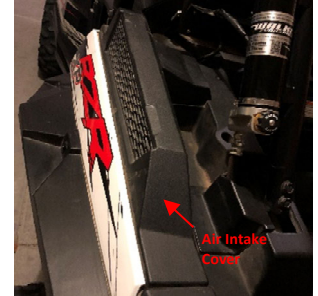


PARTICLE SEPARATOR X2 P/N: 20-1000/01

INSTALLATION INSTRUCTIONS

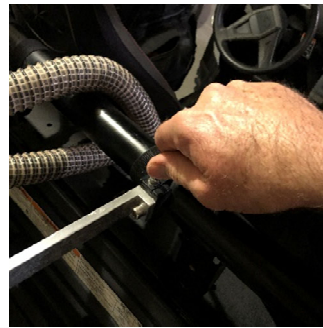
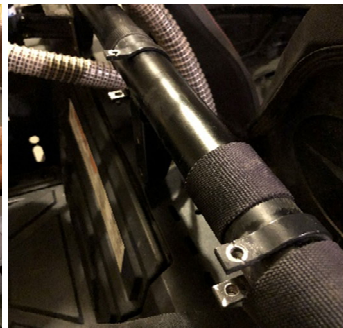
STEP 1. The preferred placement for the Particle Separator (1) is nearest to the engine intake and on the bottom bar of the roll cage. Make sure you have enough room to fit the clamps and particle separator on the roll cage without any interference. Planning ahead will save you time during the install. Our clamps are adaptable enough to work around any additional accessories you may have on the roll cage in addition to the particle separator.

Prior to installing the Particle Separator (1), remove the stock Air Intake Cover from the vehicle.

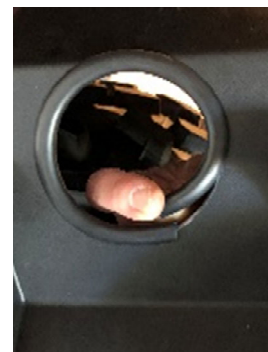


SEE EXPLODED VIEW ON PAGE 4 FOR ASSOCIATED ITEM PART NUMBERS

STEP 2. Use 1/8" Hex Key to unscrew bolt and remove from Roll Bar Clamp (7). Install Clamp onto roll bar being careful to wrap roll bar with protective tape to avoid scratching the roll cage. Insert Metal Bracket (5) into the on the Roll Bar Clamp (7), then insert Roll Bar Clamp (7) screw into the Roll Bar Clamp (7) and tighten. Do not fully tighten. Clamp should rotate freely and will be fully tightened later in assembly. After Roll Bar Clamps (1) are installed, measure gap between the Metal Brackets (5) and set at 9.5 inches and tighten screw on pivot body with provided hex key.



STEP 3. Take the stock Air Intake Cover and measure a hole that will align with the air intake. Cut a hole using a 3.75" diameter hole saw or trim using a dremel. Install included rubber stripping around the hole in the Air Intake Cover. Insert the Flexible Duct (8) through the Air Intake Cover and insert two Hose Clamps (2) over the end of the Flexible Hose Duct (9)





PARTICLE SEPARATOR X2 P/N: 20-1000/01 INSTALLATION INSTRUCTIONS (CONTINUED)

STEP 4. Locate the stock engine Air Filter Box (Forward of Engine) and flexible rubber Intake Hose located on the passenger side (right side) of the Air Filter Box. Using a Screwdriver (or equivalent tool) loosen the Hose Clamp holding the OEM flexible rubber Intake Hose (shown below right) and remove.



STEP 5. Insert the Flexible Hose Duct (8) onto the stock RZR Filter Air Box intake side and tighten the Hose Clamp (2) as shown below. Insert the Flexible Duct Hose (8) through the Air Intake Cover. Then replace the Air Intake Cover with the Flexible Duct Hose protruding through the top (shown below right).



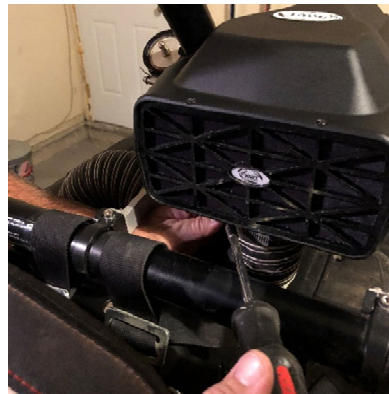


PARTICLE SEPARATOR X2 P/N: 20-1000/01 INSTALLATION INSTRUCTIONS (CONTINUED)

STEP 6. Install Particle Separator (1) onto the Metal Brackets (5) on the left and right-side using Screw (6) and Washer (4) and a 3/16" Hex Key to tighten. Washer **MUST** be between the Metal Bracket (5) and Particle Separator (1). If the washer is placed under the head of the Screw (6) the Particle Separator will rotate freely and may cause damage.



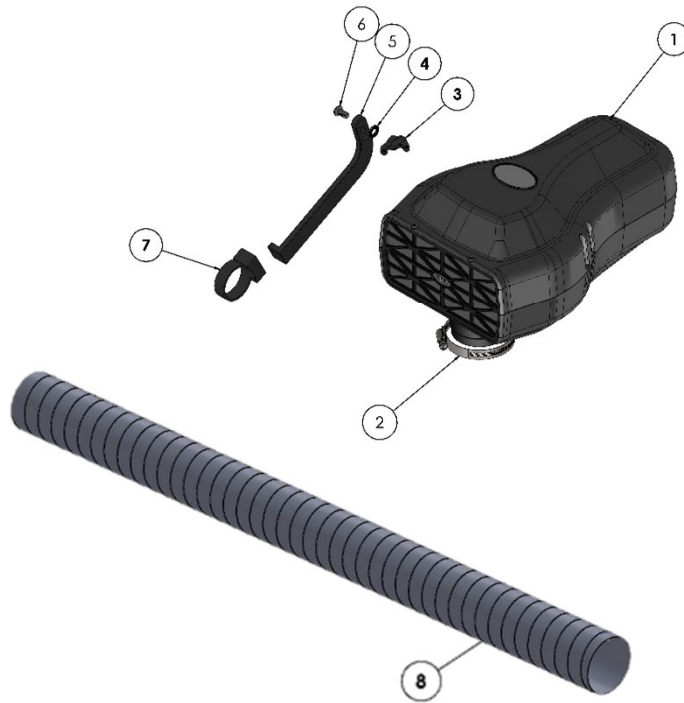
STEP 7. If necessary, cut excess off the Flexible Duct Hose (8) with wire cutters for better fit. Insert the Hose Clamp (2) over the end of the Flexible Duct Hose (8) that is sticking out of the Air Intake cover. Place the Flexible Duct Hose (8) over the Particle Separator (1) intake and tighten with a Philips screwdriver.





PARTICLE SEPARATOR X2 P/N: 20-1000/01 INSTALLATION INSTRUCTIONS (CONTINUED)

EXPLODED VIEW / PARTS LIST



ITEM	QTY	DESCRIPTION	PART NUMBER	ITEM	QTY	DESCRIPTION	PART NUMBER
1	1	PARTICLE SEPARATOR	KW9728-01	6	2	SCREW 5/16-18x5/8	KW9728-06
2	2	HOSE CLAMP	KW9728-02	7	2	CLAMP, ROLL BAR	KW9728-07a
3	2	MOUNTING BRACKET	KW9728-03	8	1	FLEXIBLE DUCT HOSE 3.25" DIA	KW9728-09
4	2	WASHER, 5/16 NORD-LOCK	KW9728-04				
5	2	BRACKET, METAL	KW9728-05				

SIDE NOTE

KWT recommends that you apply a layer of waterproof grease, such as made by Bel-Ray or Super Lube, on the inside flange of the stock Air Filter Box to keep dust from bypassing the O-ring Seal.



PARTICLE SEPARATOR X2 P/N: 20-1000/01 INSTALLATION INSTRUCTIONS (CONTINUED)

ONGOING MAINTENANCE

Your Particle Separator requires very little if any maintenance depending on where you drive; however, you should check to make sure the opening on front of the Particle Separator is not blocked by mud or other debris each time you exit the UTV. To clean your Particle Separator, review the cleaning instructions below. Cleaning should take place if the clear Sight Glass located on the underside of the Separator is showing dirt over the entire clear portion of the Sight Glass.

CLEANING INSTRUCTIONS

To clean the KWT Particle Separator push in the three buttons located on the bottom to release the dirt collection tray. Empty the dirt by taping it out. Install the tray in place starting from the back. Squeeze the dirt collection chamber onto the filter until hearing an audible click. Repeat for the two front buttons. To ensure the dirt collection tray is securely fastened, gently pull down on each of the three corners to make sure no gaps are visible.

