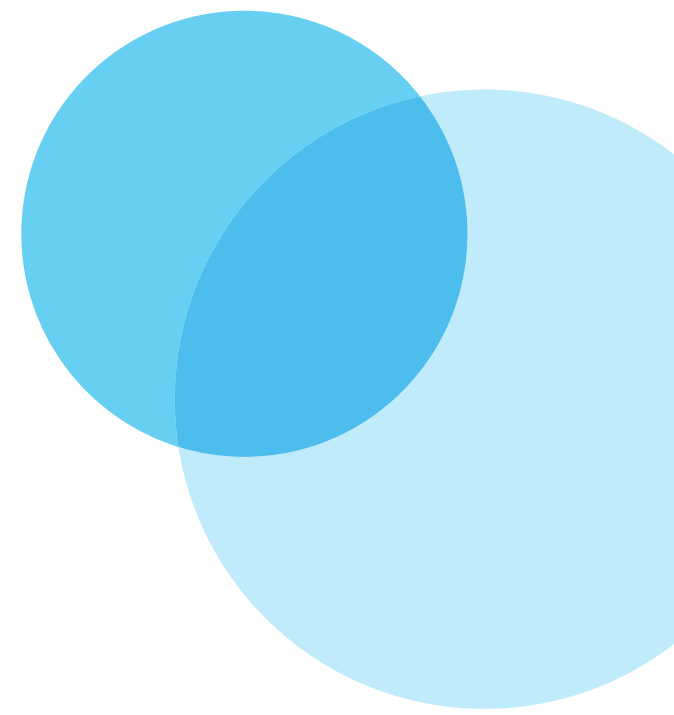
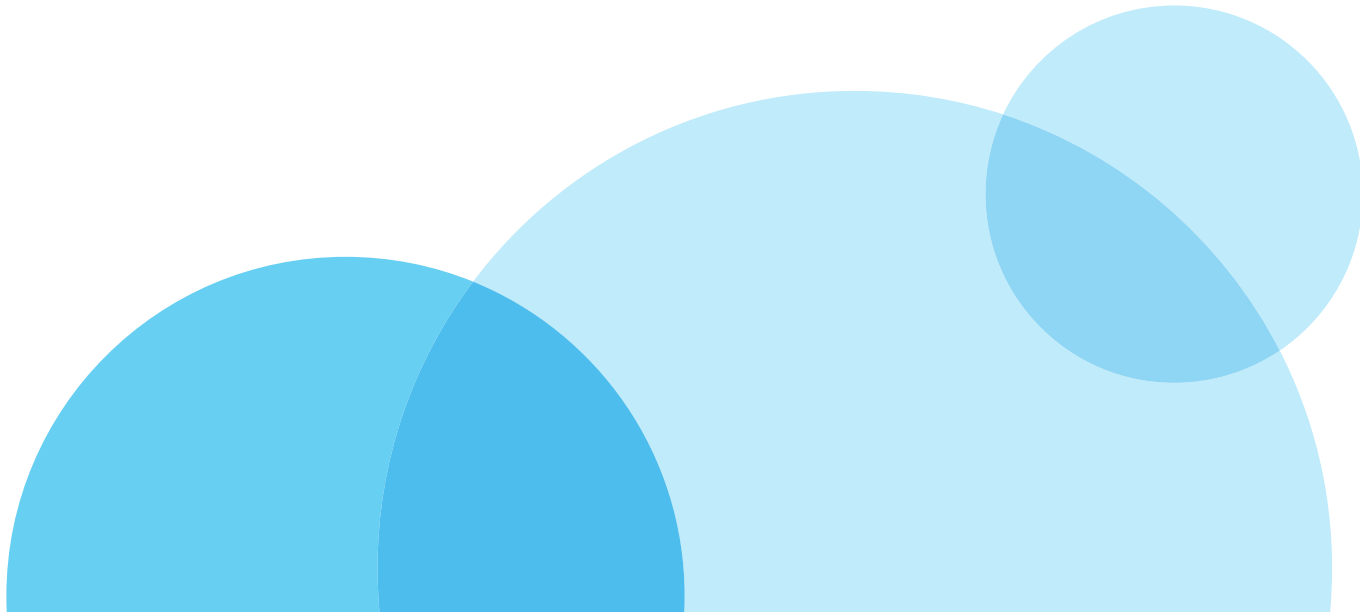




# Crystal Melt & Pour

Innovative Soap Bases



# Crystal Melt & Pour

Stephenson crystal soap bases are used by artisans and large scale manufacturers across the world to produce some of the most innovative and aesthetically pleasing soap bars on the market.

Ideal for the craft market, because it requires little in the way of specialist equipment, customers typically need only to add colour and fragrance to achieve fantastic finished soap bars. Our Melt and Pour soap bases are also popular with large scale, automated, manufacturers wanting to produce mass market innovative soap lines to differentiate themselves from their competition.

A multitude of melt and pour soap base varieties are available across transparent, translucent and opaque. Each specially formulated to meet specific market demands.

The range offers superior colour stability even when kept at high temperatures for extended periods and are perfect for slicing and moulding. So, whether your requirement is for a soap bar that is crystal clear, has low pH or is even certified to organic standards, we are sure to have a melt and pour base to meet your requirements. Accreditation to ISO9001 and ISO14001 ensure's quality production and service to the highest standards.



---

## Packaging

Crystal Melt & Pour soap bases are available in a range of packaging sizes:



1kg tub



11.5kg tub

---

## Contact Us

Interested in ordering or distributing our Crystal Melt & Pour soap bases?  
Contact us today for samples, pricing and availability

 [hello@stephensongroup.co.uk](mailto:hello@stephensongroup.co.uk)  +44 (0) 113 205 0934

# Our Crystal Melt & Pour Range

Click image to view product information



Crystal African  
Black Soap



Crystal Aloe  
Vera



Crystal Triple  
Butter



Crystal Jelly  
Soap



Crystal SS



Crystal OMP



Crystal NS



Crystal Honey

# Crystal African Black Soap

The ideal starting point for creating handmade soaps, create a wide range of beautiful products. Simply combine colour and fragrance to tailor your soaps.

Our African Black Soap base is a natural melt and pour soap base made using Raw African Black Soap from Ghana. African Black Soap is made using raw shea butter, and coconut oil, full of naturally derived minerals and antioxidants and is renowned for its natural cleansing properties.

This soap base has a dark and rich colour which is produced naturally during the handmade processing of the African Black Soap in Ghana.

- Made using 5% African Black Soap
- Vegetable based
- Dark Brown colour from raw African Black Soap
- Excellent foaming and Lather
- No Sodium Lauryl Ether Sulfate or Sodium Lauryl Sulfate
- No Propylene Glycol
- Good moisturising from a very high glycerin content which provides a pleasant skin feel
- Natural scent from African Black Soap



Open



Cut



Melt



Pour





# Crystal Aloe Vera

The ideal starting point for creating handmade soaps, create a wide range of beautiful products. Simply combine colour and fragrance to tailor your soaps.

The Aloe Vera melt and pour soap base is a Vegetable based, sulfate free base. Made using natural Aloe Vera, this mild soap base gently cleanses and soothes the skin. Used for the manufacture of high quality Aloe Vera translucent soap bars.

Aloe vera is suited for all skin types, especially dry, damaged, broken, sensitive and irritated skin.

- Made using natural Aloe Vera
- Excellent foaming and lather
- Vegetable based
- Moisturising properties from a very high glycerin content which provides a pleasant skin feel
- No Sodium Lauryl Ether Sulfate or Sodium Lauryl Sulfate



Open



Cut



Melt



Pour



# Crystal Honey

The ideal starting point for creating handmade soaps, create a wide range of beautiful products. Simply combine colour and fragrance to tailor your soaps.

Vegetable based, sulfate free, Crystal Honey Melt and Pour soap base. Made using real honey, this rich soap base contains natural antioxidants from honey ideal for soothing the skin. Used for manufacture of high quality, honey coloured translucent soap bars.

- Made using real honey sourced from Rowse Honey
- Naturally has the light orange colour of Honey
- Excellent moisturising from a high glycerin content which provides a pleasant skin feel
- Honey soothes and nourishes
- Neutral base for a superior fragrance lift
- No Sodium Lauryl Ether Sulfate or Sodium Lauryl Sulfate



Open



Cut



Melt



Pour



# Crystal JS

## Jelly Soap

The ideal starting point for creating handmade soaps, create a wide range of beautiful products. Simply combine colour and fragrance to tailor your soaps.

Crystal JS (Jelly Soap) is a unique and innovative new soap base. Crystal JS melt and pour soap base is vegetable based and used to produce a range of jelly soap products.

- Vegetable based
- Sets to form a jelly solid product
- Fantastic transparency enables bright colours
- Neutral odour provides excellent fragrance lift
- Excellent moisturising from a high glycerin content which provides a pleasant skin feel



Open



Cut



Melt



Pour



# Crystal NS

## No Sweat

The ideal starting point for creating handmade soaps, create a wide range of beautiful products. Simply combine colour and fragrance to tailor your soaps.

Vegetable based melt and pour soap base, specifically formulated for humid conditions, used for the manufacture of transparent soap bars.

- Specifically formulated for humid conditions
- Ideal for the manufacture of unwrapped soap bars
- Fantastic transparency enables bright colours
- Good foaming performance
- Neutral odour provides excellent fragrance lift



Open



Cut



Melt



Pour





# Crystal OMP



The ideal starting point for creating handmade soaps, create a wide range of beautiful products. Simply combine colour and fragrance to tailor your soaps.

Our Crystal OMP vegetable derived soap base is certified organic to the COSMOS standard. For the manufacture of certified translucent soap bars.

Certified to the Cosmos standard  
66.58% Organic, 58.12% Organic CPAI, 39.88% Organic PPAI

- No Propylene Glycol or synthetic surfactants
- Has the natural light brown colour of the organic oils and organic sugar
- Excellent foaming and lather
- Moisturising properties and smooth skin feel as a result of high glycerin content



Open



Cut



Melt



Pour



# Crystal SS

## Solid Shampoo

The ideal starting point for creating handmade soaps, create a wide range of beautiful products. Simply combine colour and fragrance to tailor your soaps.

Vegetable based melt and pour soap base. Made with soothing Aloe Vera and containing conditioning additives this soap base is used for the manufacture of opaque solid shampoo bars.

- Made using soothing Aloe Vera
- No Sodium Lauryl Sulfate
- Vegetable based
- Contains conditioning additives
- Excellent lather
- Good moisturising from a high glycerin content which provides a pleasant skin feel
- Neutral odour provides excellent fragrance lift



Open



Cut



Melt



Pour



# Crystal Triple Butter

The ideal starting point for creating handmade soaps, create a wide range of beautiful products. Simply combine colour and fragrance to tailor your soaps.

Vegetable derived melt and pour soap base. Made using a blend of premium luxurious butters including Shea Butter, Cocoa Butter and Mango Butter to nourish and cleanse the skin. Crystal Triple Butter soap base is used for the manufacture of opaque solid soap bars that soften and restore the skins natural health.

- Unique blend of three natural butters
- Helps to moisturise and restore skin feel
- Vitamin E, D & Provitamin A from the butters used in the soap
- Fantastic skin feel
- Low colour
- High foaming
- Moisturising properties from a high glycerin content which provides a pleasant skin feel



Open



Cut



Melt



Pour





# Processing Crystal Melt & Pour



## 1. Open & Cut

Simply open the packaging, safely cut the Crystal soap base into smaller cubes, doing this will make the soap easier to handle and melt.



## 2. Melt

Gradually heat the soap base ensuring that the soap melts evenly and does not boil over.



## 3. Mix

Mix gently ensuring that any fragrance or additives\* you have added are evenly distributed throughout the soap base.

*\*Use up to 2% additives*



## 4. Pour

Working quickly, simply pour your soap base into your soap mould.

---

### Kick Start Your Creativity

Interested in ordering or distributing our Melt & Pour range? Contact us today for samples, pricing and availability.

✉ [hello@stephensongroup.co.uk](mailto:hello@stephensongroup.co.uk)

☎ +44 (0) 113 205 0934

# Processing Crystal Rebatch



## 1. Open & Cut

Grate the rebatch base and place into slow cooker. We recommend using **at least 1kg**.

Turn on to high.



## 2. Melt

Cover the slow cooker for 45 minutes. Stir well and re-cover for a further 45 minutes until a mashed potato consistency is achieved.

Ensure temperature is between 73-75°C.



## 3. Add & Mix

You can add fragrance\*, botanicals and colourants whilst still in the slow cooker.

*\*Use up to 3% additives*



## 4. Scoop & Set

Working quickly, scoop your melted Rebatch into the mould.

Be careful not to scrape the base as there will be a thin crust on the base of the slow cooker.

---

### Kick Start Your Creativity

Interested in ordering or distributing our Melt & Pour range? Contact us today for samples, pricing and availability.

✉ [hello@stephensongroup.co.uk](mailto:hello@stephensongroup.co.uk)

☎ +44 (0) 113 205 0934



# Do you love soap making?

Join the Stephenson Soap Club

Showcase your [#stephensonsoapclub](#) creations for your chance to win prizes every month.

 Stephenson





Stephenson

# Contact us

If you have a specific project, or would like more information about our Crystal Melt & Pour soap bases please contact our team:

+44 (0)113 205 0900

hello@stephensongroup.co.uk

www.stephensonpersonalcare.com

Stephenson, Brookfoot House, Low Lane, Horsforth, Leeds, LS18 5PU United Kingdom

Follow us on 

